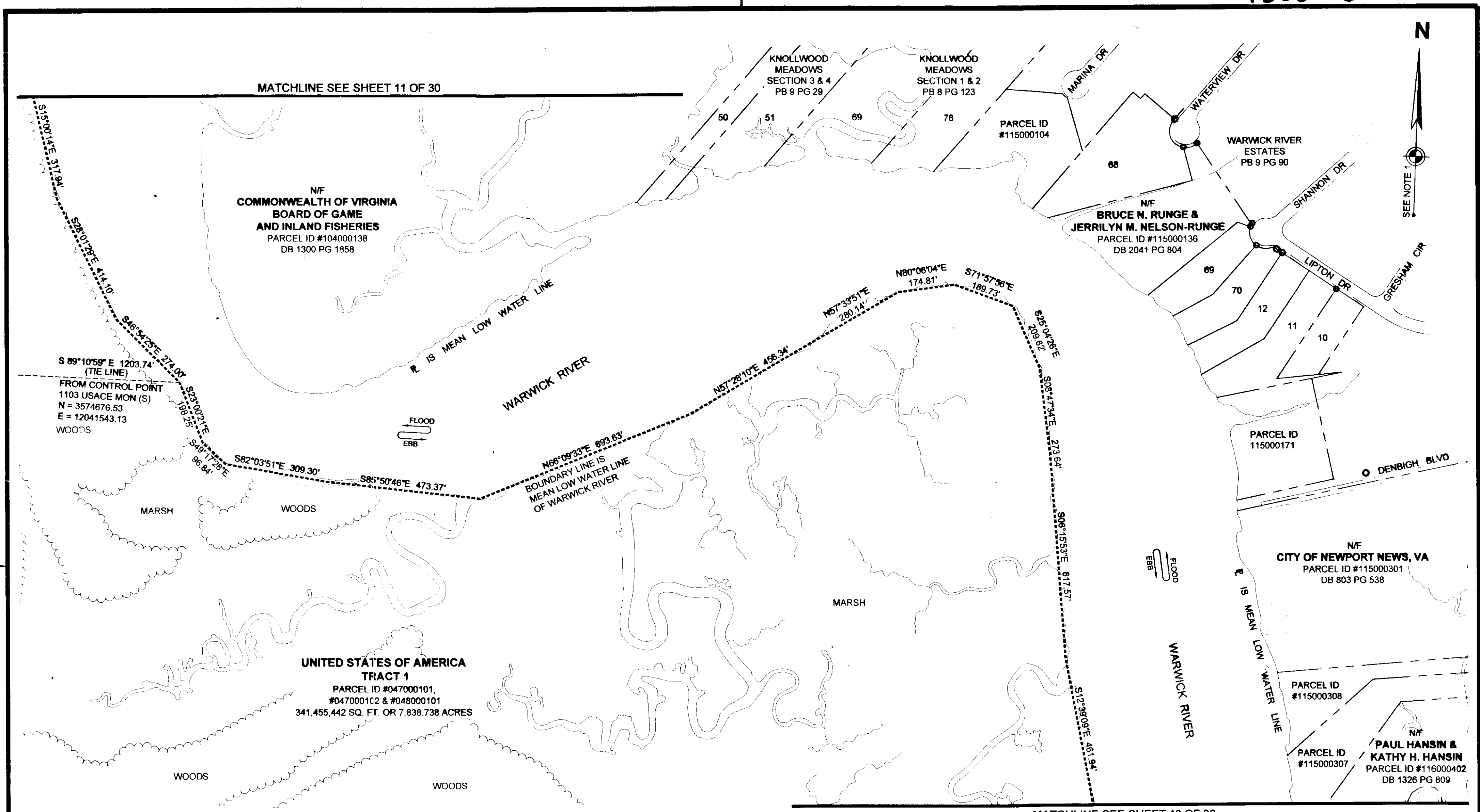


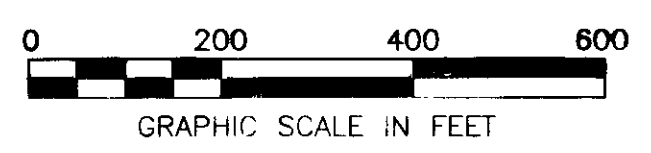
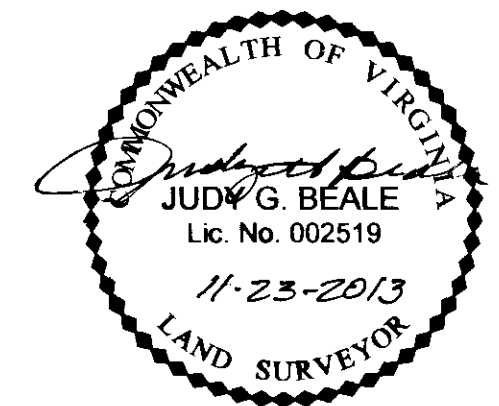
130026366



30 Large (Small Plat(s) Recorded hereafter as 130026366

VIRGINIA: IN THE CLERK'S OFFICE OF THE CIRCUIT COURT OF THE CITY/COUNTY OF WILLIAMSBURG/JAMES CITY COUNTY VIRGINIA ON THIS 29th DAY OF November 2013, THIS PLAT WAS RECEIVED AND ADMITTED TO RECORD IN MAP BOOK AT PAGE AT 10:08 AM on 11/29/13 130026366  
TESTE: SETH E. WOOLPERT, CLERK by: Patrick H. Hines, Deputy Clerk  
CLERK

- LEGEND**
- IRON PIN FOUND
  - IRON PIPE FOUND
  - T-BAR FOUND
  - NAIL FOUND
  - CONCRETE MONUMENT FOUND
  - MONUMENT SET
  - IRON PIN SET
- BOUNDARY LINE
  - - - TIE LINE
  - CITY/COUNTY LINE
  - - - RIGHT OF WAY LINE
  - - - EASEMENT LINE
  - - - ADJOINER LINE
  - EXIST. RAILROAD TRACKS
  - ~ EDGE OF WOODS



SEE SHEET 1 OF 30 FOR NOTES

**BOUNDARY SURVEY**  
OF PROPERTY OF  
**UNITED STATES OF AMERICA**  
**JOINT BASE LANGLEY-EUSTIS (JBLE)**  
NEWPORT NEWS TAX PARCELS 047000100, 047000102 & 048000101  
AND  
JAMES CITY COUNTY TAX PARCEL 0622010001  
**NEWPORT NEWS AND JAMES CITY COUNTY, VIRGINIA**

DES. N/A	JOB NO. 71874
DRN. PP	SCALE 1" = 200'
CKD. JGB	DATE 4/29/2013
SHEET NO. 12 OF 30	
FILE NO. 71874_plat.dwg	

**WOOLPERT**  
DESIGN | OCCUPANTIAL | INFRASTRUCTURE  
676 INDEPENDENCE PARKWAY  
SUITE 100  
CHESAPEAKE, VA 23320-5218  
TEL: 757.549.3549  
FAX: 757.549.3540