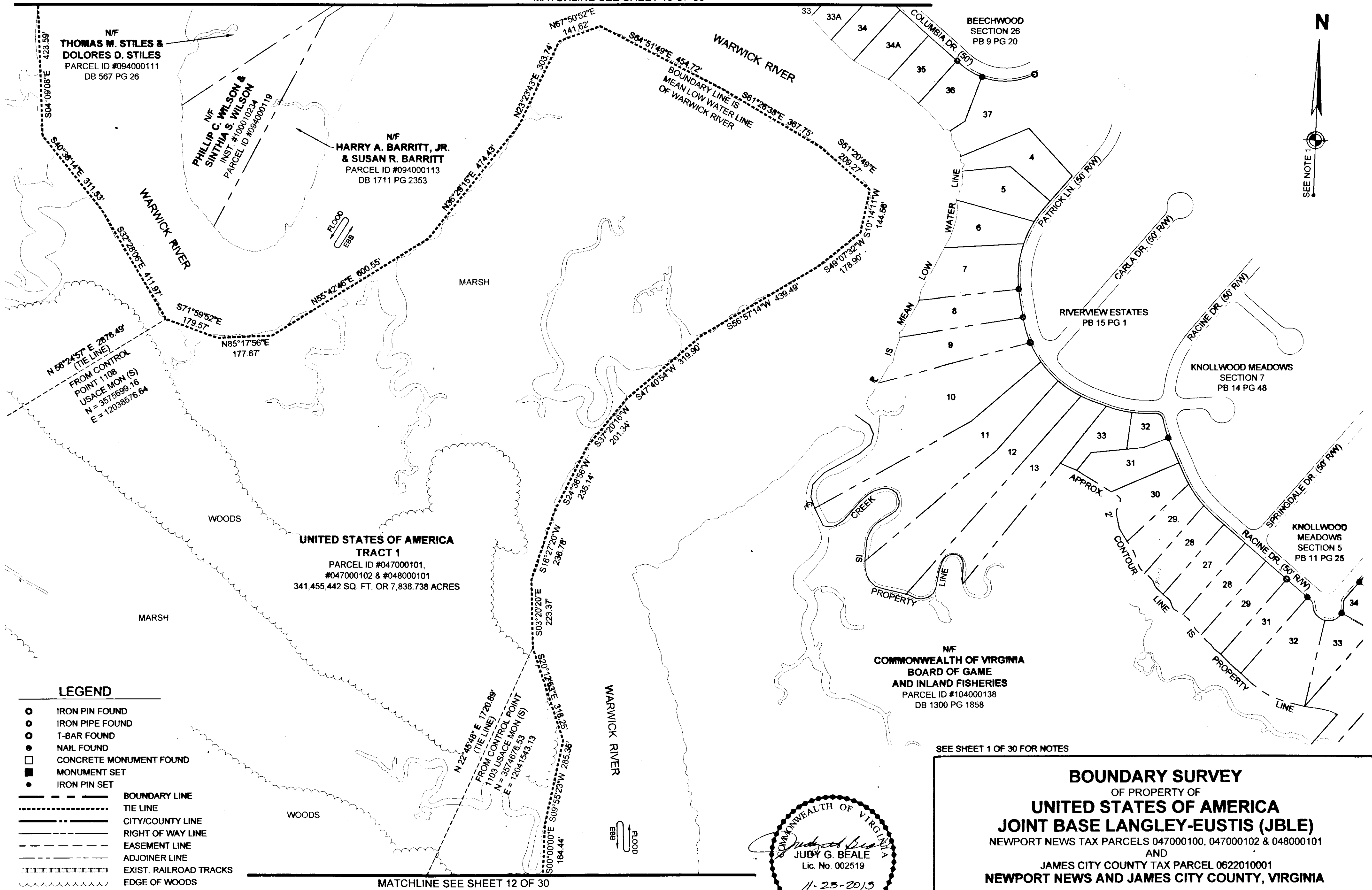


MATCHLINE SEE SHEET 10 OF 30

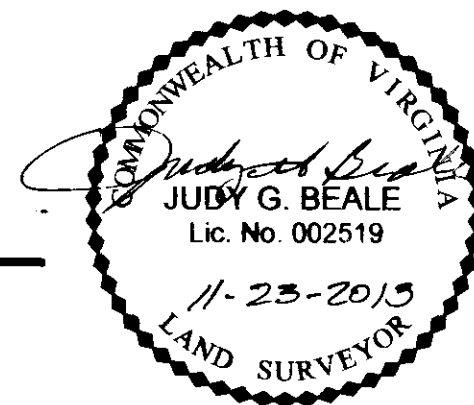


LEGEND

- IRON PIN FOUND
 - IRON PIPE FOUND
 - ⊥ T-BAR FOUND
 - NAIL FOUND
 - CONCRETE MONUMENT FOUND
 - MONUMENT SET
 - IRON PIN SET
- BOUNDARY LINE
 - - - TIE LINE
 - · - · - CITY/COUNTY LINE
 - - - RIGHT OF WAY LINE
 - · - · - EASEMENT LINE
 - - - ADJOINER LINE
 - · - · - EXIST. RAILROAD TRACKS
 - ~~~~~ EDGE OF WOODS

MATCHLINE SEE SHEET 12 OF 30

SEE SHEET 1 OF 30 FOR NOTES



BOUNDARY SURVEY
OF PROPERTY OF
UNITED STATES OF AMERICA
JOINT BASE LANGLEY-EUSTIS (JBLE)
NEWPORT NEWS TAX PARCELS 047000100, 047000102 & 048000101
AND
JAMES CITY COUNTY TAX PARCEL 0622010001
NEWPORT NEWS AND JAMES CITY COUNTY, VIRGINIA

DES. N/A JOB NO. 71874
DRN. PP SCALE 1" = 200'
CKD. JGB DATE 4/29/2013

SHEET NO. 11 OF 30
FILE NO. 71874_plat.dwg

VIRGINIA:

IN THE CLERK'S OFFICE OF THE CIRCUIT COURT OF THE CITY/COUNTY OF WILLIAMSBURG/JAMES CITY COUNTY VIRGINIA ON THIS 26th DAY OF November, 2013, THIS PLAT WAS RECEIVED AND ADMITTED TO RECORD IN MAP BOOK AT PAGE AT 10:08 AM as Inst. 130026366

30 Large 11x17 Plat(s) Recorded herewith as a 130026366

TESTE: DESY & WOOLPERT, CLERK by: Judith A. ...
CLERK

