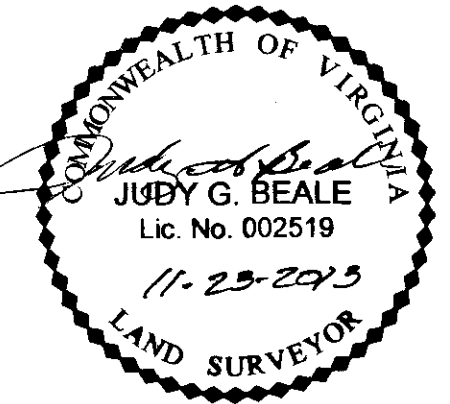


130026366

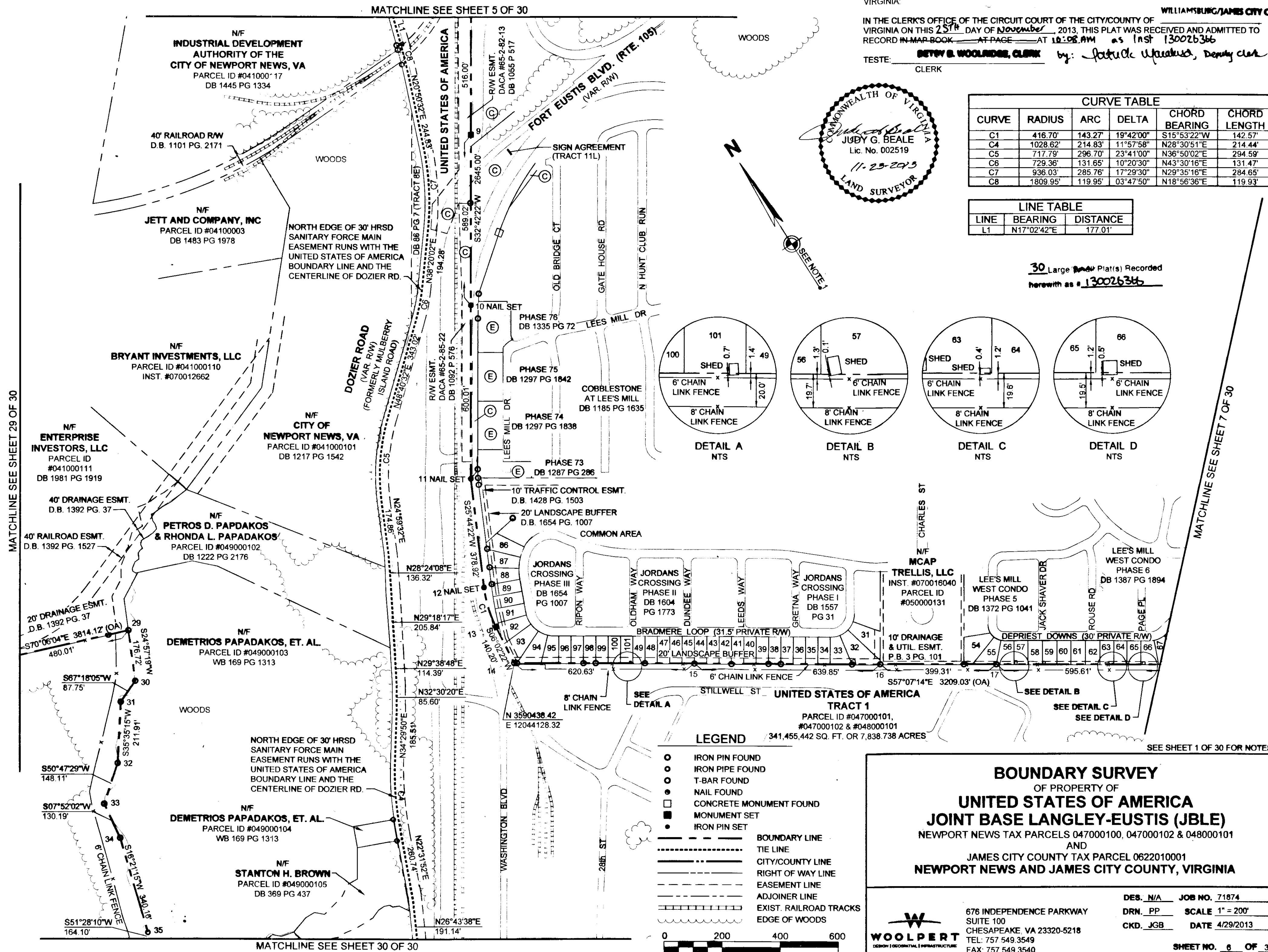
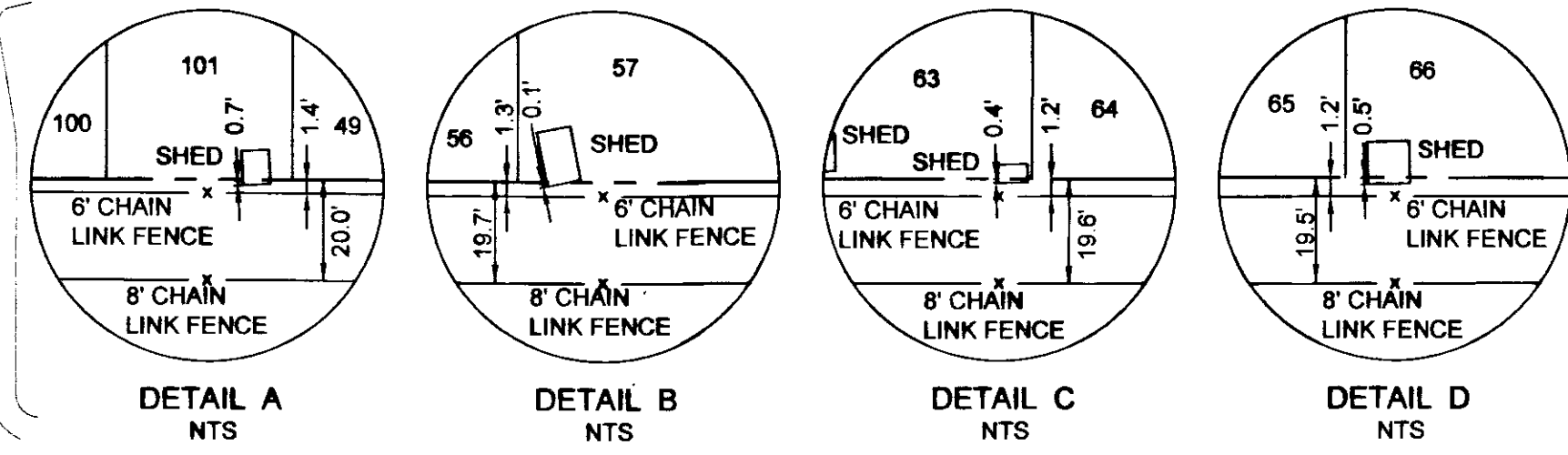
VIRGINIA: WILLIAMSBURG/JAMES CITY COUNTY  
 IN THE CLERK'S OFFICE OF THE CIRCUIT COURT OF THE CITY/COUNTY OF VIRGINIA ON THIS 25<sup>TH</sup> DAY OF November 2013, THIS PLAT WAS RECEIVED AND ADMITTED TO RECORD IN MAP BOOK AT PAGE AT 10:08 AM as INST 130026366  
 TESTE: **BETTY B. WOOLPERT, CLERK** by: *Patrick W. Wooten, Deputy Clerk*  
 CLERK



CURVE TABLE					
CURVE	RADIUS	ARC	DELTA	CHORD BEARING	CHORD LENGTH
C1	416.70'	143.27'	19°42'00"	S15°53'22"W	142.57'
C4	1028.62'	214.83'	11°57'58"	N28°30'51"E	214.44'
C5	717.79'	296.70'	23°41'00"	N36°50'02"E	294.59'
C6	729.36'	131.65'	10°20'30"	N43°30'16"E	131.47'
C7	936.03'	285.76'	17°29'30"	N29°35'16"E	284.65'
C8	1809.95'	119.95'	03°47'50"	N18°56'36"E	119.93'

LINE TABLE		
LINE	BEARING	DISTANCE
L1	N17°02'42"E	177.01'

30 Large Plat(s) Recorded herewith as # 130026366



**LEGEND**

- IRON PIN FOUND
- IRON PIPE FOUND
- T-BAR FOUND
- NAIL FOUND
- CONCRETE MONUMENT FOUND
- MONUMENT SET
- IRON PIN SET

--- BOUNDARY LINE  
 - - - TIE LINE  
 - - - CITY/COUNTY LINE  
 - - - RIGHT OF WAY LINE  
 - - - EASEMENT LINE  
 - - - ADJOINER LINE  
 - - - EXIST. RAILROAD TRACKS  
 - - - EDGE OF WOODS

0 200 400 600  
 GRAPHIC SCALE IN FEET

**BOUNDARY SURVEY**  
 OF PROPERTY OF  
**UNITED STATES OF AMERICA**  
**JOINT BASE LANGLEY-EUSTIS (JBLE)**  
 NEWPORT NEWS TAX PARCELS 047000100, 047000102 & 048000101  
 AND  
 JAMES CITY COUNTY TAX PARCEL 0622010001  
**NEWPORT NEWS AND JAMES CITY COUNTY, VIRGINIA**

DES. N/A JOB NO. 71874  
 DRN. PP SCALE 1" = 200'  
 CKD. JGB DATE 4/29/2013  
 SHEET NO. 6 OF 30  
 FILE NO. 71874\_plat.dwg

676 INDEPENDENCE PARKWAY  
 SUITE 100  
 CHESAPEAKE, VA 23320-5218  
 TEL: 757.549.3549  
 FAX: 757.549.3540

MATCHLINE SEE SHEET 29 OF 30

MATCHLINE SEE SHEET 7 OF 30

MATCHLINE SEE SHEET 30 OF 30

MATCHLINE SEE SHEET 5 OF 30

SEE SHEET 1 OF 30 FOR NOTES