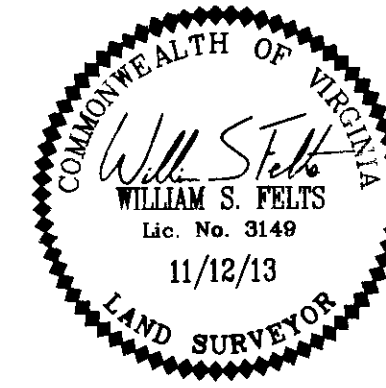


130026297

**NOTES:**

1. THIS PLAT WAS PRODUCED WITHOUT THE BENEFIT OF A TITLE REPORT.
2. WETLANDS, IF ANY, WERE NOT LOCATED FOR THIS SURVEY.
3. THIS PLAT IS COMPILED FROM ONLY PLATS OF RECORD AND DOES NOT REPRESENT A FIELD SURVEY.
4. REFERENCES: AS SHOWN HEREON.
5. EASEMENTS WITHIN OR ADJACENT TO RIGHT-OF-WAY NOT RESEARCHED OR SHOWN HEREON.
6. PROPERTY LINES AND OWNER INFORMATION ADJOINING FORD'S COLONY DRIVE IS SHOWN PER JCC GIS.

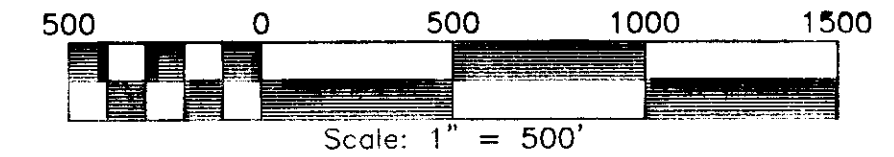


COMPILED PLAT SHOWING  
**FORD'S COLONY DRIVE**  
**FORD'S COLONY • WILLIAMSBURG**  
 JAMES CITY COUNTY POWHATAN DISTRICT VIRGINIA  
 DATE: 11/12/13 SCALE: 1"=500' JOB #13-425

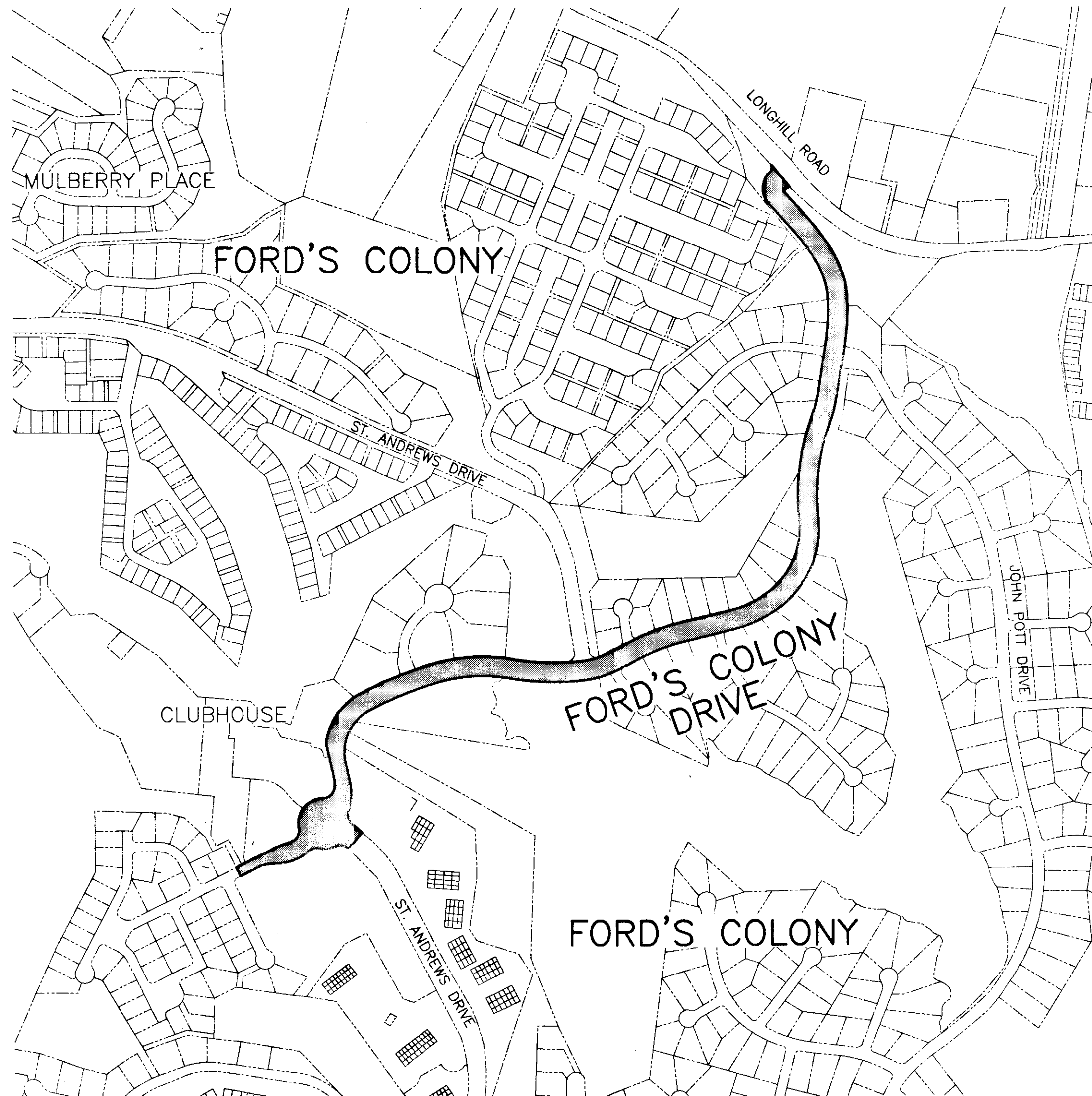
**LandTech**  
 Resources, Inc.  
 Surveying • Engineering • GPS  
 205 Bulifants Boulevard, Suite E, Williamsburg, Virginia 23188  
 Phone: (757) 565-1677 Fax: (757) 565-0782  
 web: landtechresources.com

RECORD MERIDIAN  
 P.B. 31, PGS. 76-86

SHEET 1 OF 3



**SITE LOCATION MAP**  
 SCALE: 1"=500'



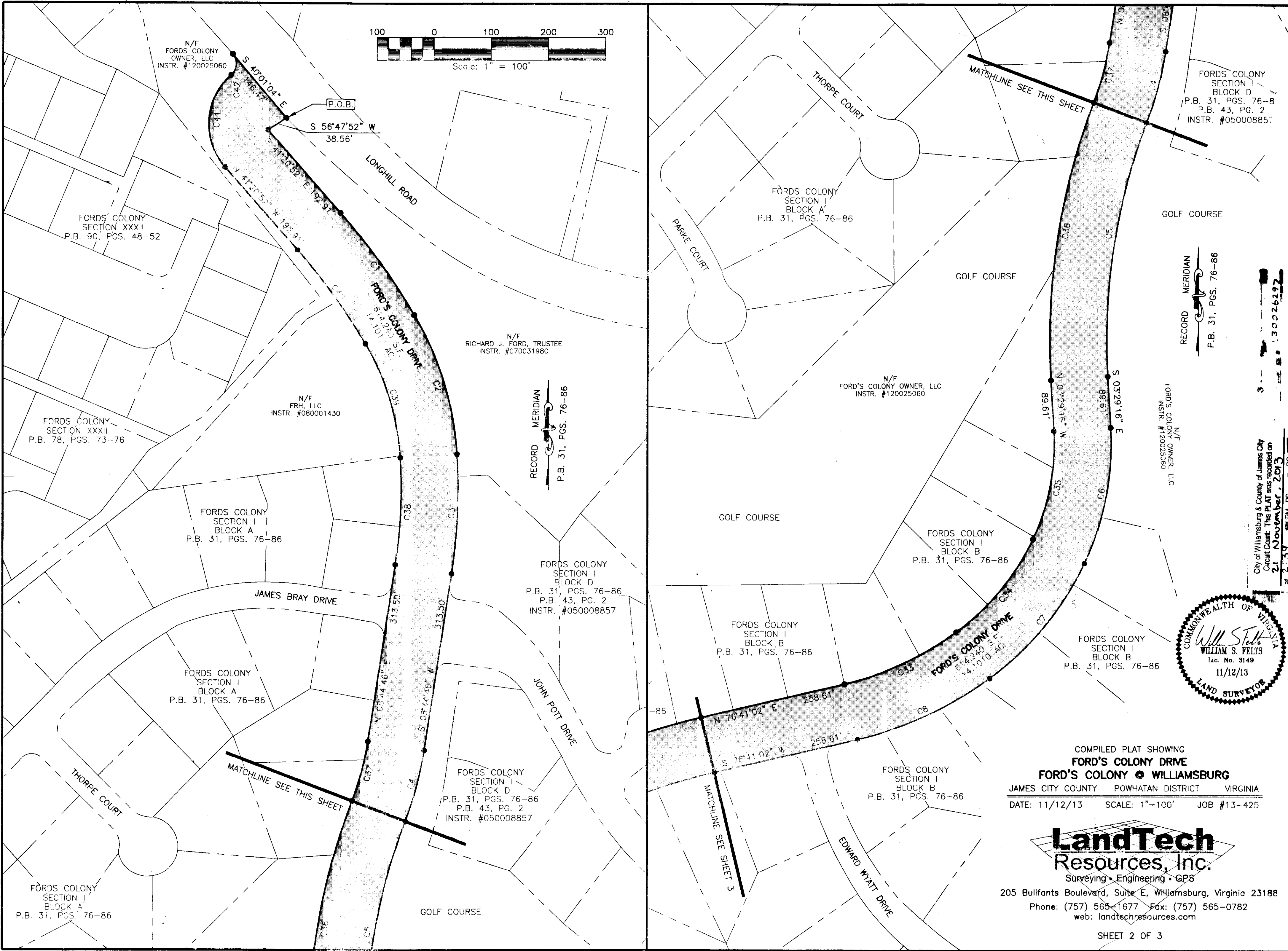
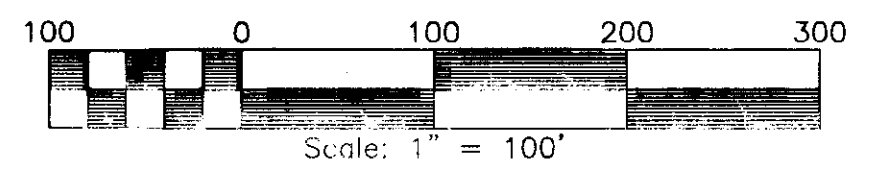
**RIGHT-OF-WAY CURVE TABLE**

CURVE	RADIUS	ARC LENGTH	CHORD LENGTH	CHORD BEARING	DELTA ANGLE
C1	1185.84'	221.23'	220.91'	S 36°00'12" E	10°41'20"
C2	547.52'	258.02'	255.64'	S 17°09'30" E	27°00'04"
C3	970.22'	210.04'	209.63'	S 02°32'39" W	12°24'14"
C4	619.32'	130.06'	129.82'	S 14°45'44" W	12°01'56"
C5	1073.89'	454.82'	451.43'	S 08°38'43" W	24°15'58"
C6	489.45'	245.52'	242.95'	S 10°52'58" W	28°44'27"
C7	529.73'	263.43'	260.73'	S 39°29'59" W	28°29'35"
C8	641.46'	256.80'	255.09'	S 65°12'54" W	22°56'16"
C9	1071.27'	270.65'	269.93'	S 69°26'46" W	14°28'32"
C10	473.62'	170.40'	169.48'	S 72°30'55" W	20°36'50"
C11	1365.89'	402.08'	400.63'	N 88°44'41" W	16°51'58"
C12	827.83'	408.05'	403.94'	S 85°34'02" W	28°14'32"
C13	1727.39'	308.92'	308.51'	S 66°19'24" W	10°14'48"
C14	250.00'	323.69'	301.55'	S 24°06'30" W	74°11'00"
C15	325.00'	181.34'	179.00'	S 03°00'06" W	31°58'12"
C16	63.50'	76.22'	71.72'	N 80°46'54" W	68°46'14"
C17	132.50'	84.42'	83.00'	S 83°05'11" W	36°30'24"
C18	63.50'	58.81'	56.73'	S 74°48'21" W	53°04'04"
C19	243.50'	159.40'	156.57'	S 67°01'31" W	37°30'23"
C20	208.50'	81.09'	80.58'	S 74°38'13" W	22°16'59"
C21	261.50'	37.74'	37.71'	N 67°37'47" E	8°16'07"
C22	63.50'	91.19'	83.55'	N 30°37'23" E	82°16'53"
C23	132.50'	226.91'	200.18'	N 38°32'38" E	98°07'22"
C24	63.50'	90.30'	82.88'	N 46°51'59" E	81°28'41"
C25	164.50'	55.58'	55.32'	N 03°33'07" W	19°21'31"
C26	105.00'	45.17'	44.82'	N 00°54'25" W	24°38'56"
C27	350.00'	304.10'	294.63'	N 36°18'32" E	49°46'57"
C28	1827.39'	326.81'	326.37'	N 66°19'24" E	10°14'48"
C29	927.83'	457.35'	452.73'	N 85°34'02" E	28°14'32"
C30	1265.89'	372.64'	371.30'	S 88°44'41" E	16°51'58"
C31	373.62'	134.42'	133.70'	N 72°30'55" E	20°36'50"
C32	1171.27'	295.92'	295.13'	N 69°26'46" E	14°28'32"
C33	541.46'	216.77'	215.32'	N 65°12'54" E	22°56'16"
C34	429.73'	213.70'	211.51'	N 39°29'59" E	28°29'35"
C35	389.45'	195.36'	193.31'	N 10°52'58" E	28°44'27"
C36	1173.89'	497.17'	493.46'	N 08°38'43" E	24°15'58"
C37	519.32'	109.06'	108.86'	N 14°45'44" E	12°01'56"
C38	870.22'	188.39'	188.03'	N 02°32'39" E	12°24'14"
C39	447.52'	210.90'	208.95'	N 17°09'30" W	27°00'04"
C40	1085.84'	202.57'	202.28'	N 36°00'12" W	10°41'20"
C41	115.00'	180.64'	162.63'	N 03°39'08" E	90°00'00"
C42	26.58'	41.13'	37.15'	N 04°19'02" E	88°40'12"

3 Large/Small Plat(s) Recorded  
 herewith as # 130026297

City of Williamsburg & County of James City  
 Circuit Court: This PLAT was recorded on  
 21 November, 2013  
 at 2:39 AM/PM, PG. 31  
 Document # 130026297  
 BETSY B. WOOLRIDGE, CLERK  
 [Signature] Dep. Clerk

130026297



N/F  
FORDS COLONY  
OWNER, LLC  
INSTR. #120025060

FORDS COLONY  
SECTION XXXII  
P.B. 90, PGS. 48-52

FORDS COLONY  
SECTION XXXII  
P.B. 78, PGS. 73-76

FORDS COLONY  
SECTION I  
BLOCK A  
P.B. 31, PGS. 76-86

FORDS COLONY  
SECTION I  
BLOCK A  
P.B. 31, PGS. 76-86

FORDS COLONY  
SECTION I  
BLOCK A  
P.B. 31, PGS. 76-86

N/F  
RICHARD J. FORD, TRUSTEE  
INSTR. #070031980

RECORD MERIDIAN  
P.B. 31, PGS. 76-86

FORDS COLONY  
SECTION I  
BLOCK D  
P.B. 31, PGS. 76-86  
P.B. 43, PG. 2  
INSTR. #050008857

FORDS COLONY  
SECTION I  
BLOCK D  
P.B. 31, PGS. 76-86  
P.B. 43, PG. 2  
INSTR. #050008857

FORDS COLONY  
SECTION I  
BLOCK A  
P.B. 31, PGS. 76-86

N/F  
FORDS COLONY OWNER, LLC  
INSTR. #120025060

FORDS COLONY  
SECTION I  
BLOCK B  
P.B. 31, PGS. 76-86

FORDS COLONY  
SECTION I  
BLOCK B  
P.B. 31, PGS. 76-86

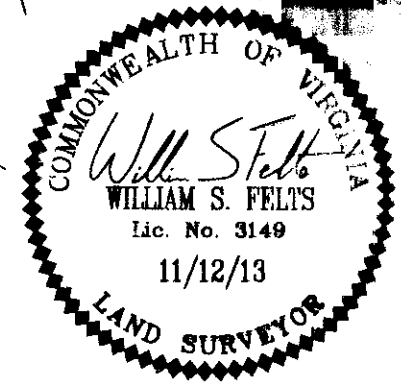
FORDS COLONY  
SECTION I  
BLOCK B  
P.B. 31, PGS. 76-86

FORDS COLONY  
SECTION I  
BLOCK D  
P.B. 31, PGS. 76-86  
P.B. 43, PG. 2  
INSTR. #050008857

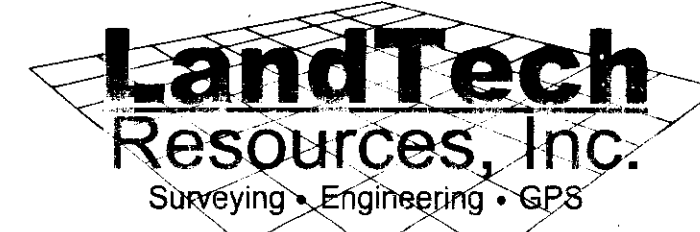
RECORD MERIDIAN  
P.B. 31, PGS. 76-86

N/F  
FORDS COLONY OWNER, LLC  
INSTR. #120025060

FORDS COLONY  
SECTION I  
BLOCK B  
P.B. 31, PGS. 76-86

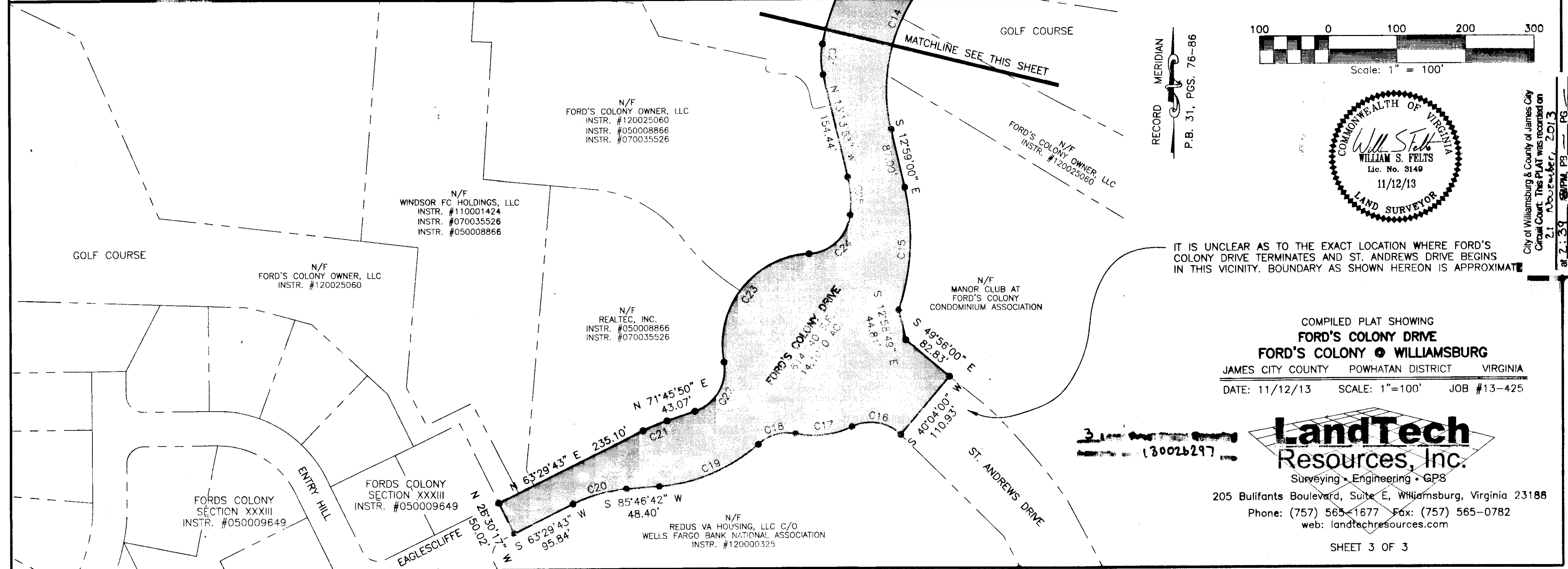
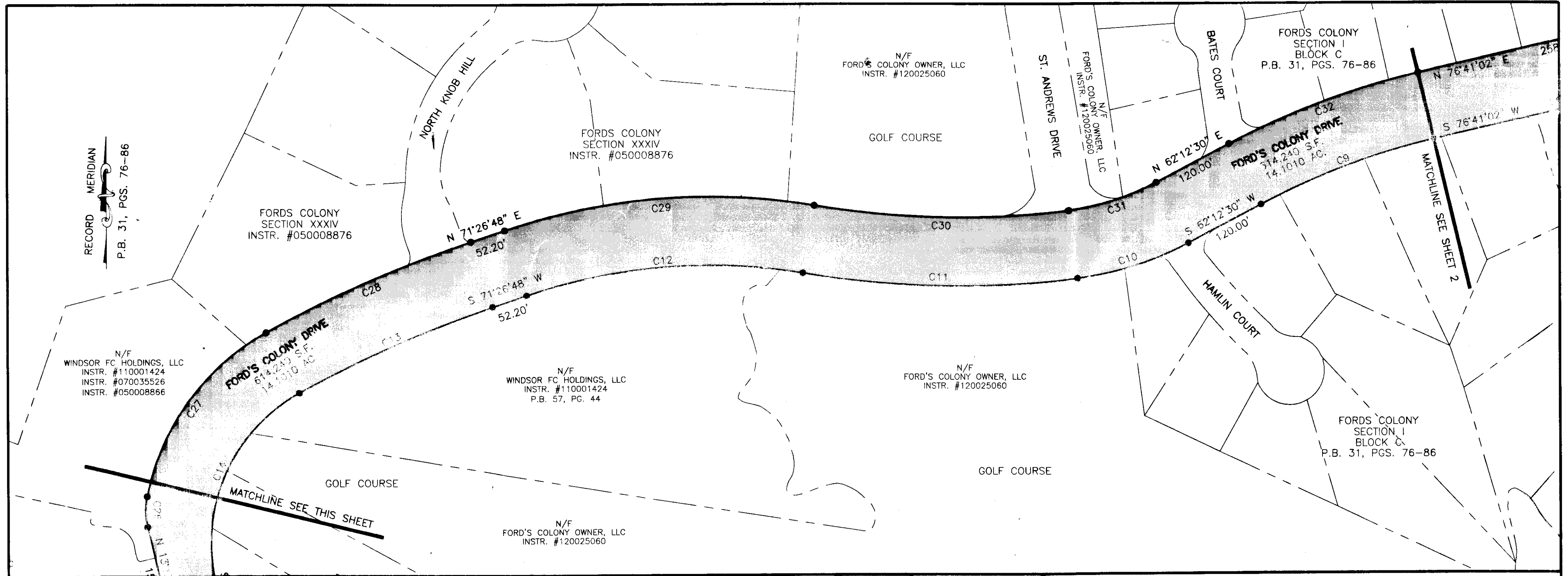


COMPILED PLAT SHOWING  
**FORD'S COLONY DRIVE**  
**FORD'S COLONY • WILLIAMSBURG**  
JAMES CITY COUNTY POWHATAN DISTRICT VIRGINIA  
DATE: 11/12/13 SCALE: 1"=100' JOB #13-425



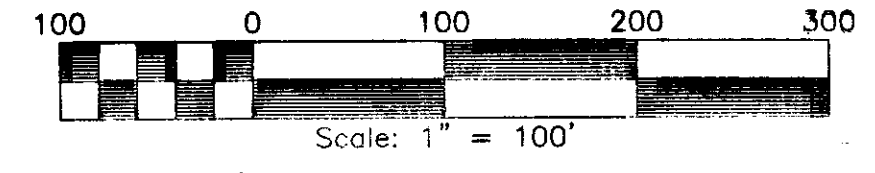
205 Bulifants Boulevard, Suite E, Williamsburg, Virginia 23188  
Phone: (757) 565-1677 Fax: (757) 565-0782  
web: landtechresources.com

City of Williamsburg & County of James City  
Circuit Court. This PLAT was recorded on  
21 November, 2013  
at 2:34 PM, PG. 2  
Document # 130026297  
BETSY B. WOODRIDGE, CLERK  
Clerk



RECORD MERIDIAN  
P.B. 31, PGS. 76-86

RECORD MERIDIAN  
P.B. 31, PGS. 76-86



IT IS UNCLEAR AS TO THE EXACT LOCATION WHERE FORD'S COLONY DRIVE TERMINATES AND ST. ANDREWS DRIVE BEGINS IN THIS VICINITY. BOUNDARY AS SHOWN HEREON IS APPROXIMATE

COMPILED PLAT SHOWING  
**FORD'S COLONY DRIVE**  
**FORD'S COLONY • WILLIAMSBURG**  
JAMES CITY COUNTY POWHATAN DISTRICT VIRGINIA  
DATE: 11/12/13 SCALE: 1"=100' JOB #13-425

3111  
130026297

**LandTech Resources, Inc.**  
Surveying • Engineering • GPS

205 Bulifants Boulevard, Suite E, Williamsburg, Virginia 23188  
Phone: (757) 565-1677 Fax: (757) 565-0782  
web: landtechresources.com

City of Williamsburg & County of James City  
Circuit Court. This PLAT was recorded on  
21 November, 2013  
at 2:39 PM, PG. 21  
Document # 130026297  
BETSY B. WOOLRIDGE, CLERK  
Dep. Clerk