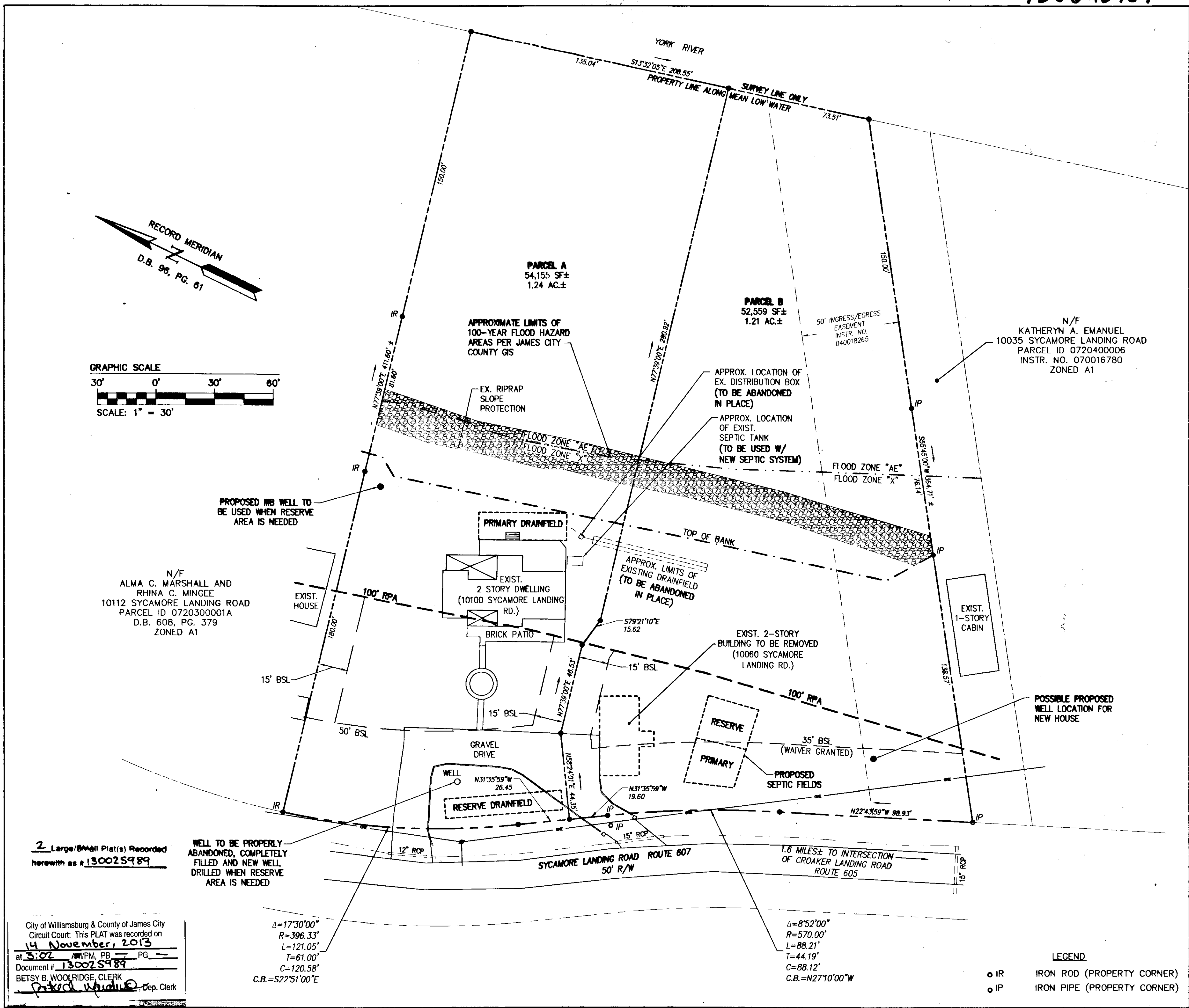
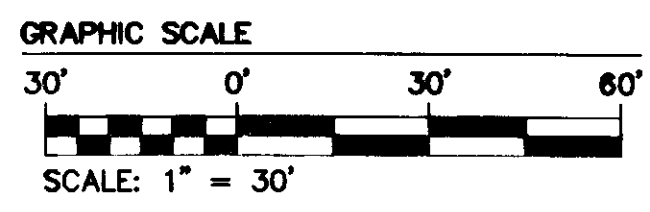
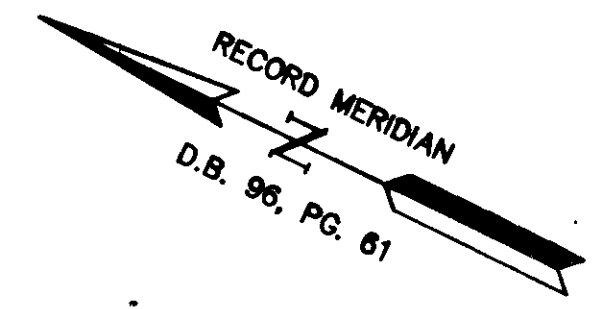


REVISED COMMENTS FROM LOCAL PLANNING DEPT. 8-13-13	DATE	BY



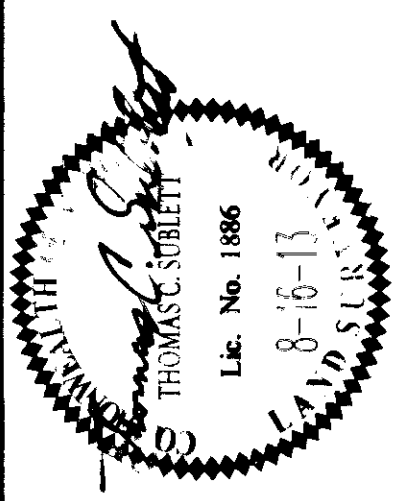
2 Large/Small Plat(s) Recorded herewith as # 130025989

City of Williamsburg & County of James City Circuit Court: This PLAT was recorded on 14 November, 2013 at 3:02 AM/PM, PB PG Document # 130025989 BETSY B. WOOLRIDGE, CLERK *Betsy Woolridge*, Dep. Clerk

Δ=17°30'00"
R=396.33'
L=121.05'
T=61.00'
C=120.58'
C.B.=S22°51'00"E

Δ=8°52'00"
R=570.00'
L=88.21'
T=44.19'
C=88.12'
C.B.=N27°10'00"W

LEGEND
● IR IRON ROD (PROPERTY CORNER)
● IP IRON PIPE (PROPERTY CORNER)



5248 Old Towne Road, Suite 1
Williamsburg, Virginia 23188
Phone: (757) 253-0040
Fax: (757) 220-9804
www.aesva.com

AES
CONSULTING ENGINEERS

Hampton Roads | Central Virginia | Middle Peninsula

PLAT SHOWING
MURPHY FAMILY SUBDIVISION
10100 SYCAMORE LANDING ROAD
STONEHOUSE DISTRICT JAMES CITY COUNTY VIRGINIA

Project Contacts	RAC/TCS
Project Number	W10151
Scale	1"=30'
Date	08-16-13
Sheet Number	2 OF 2