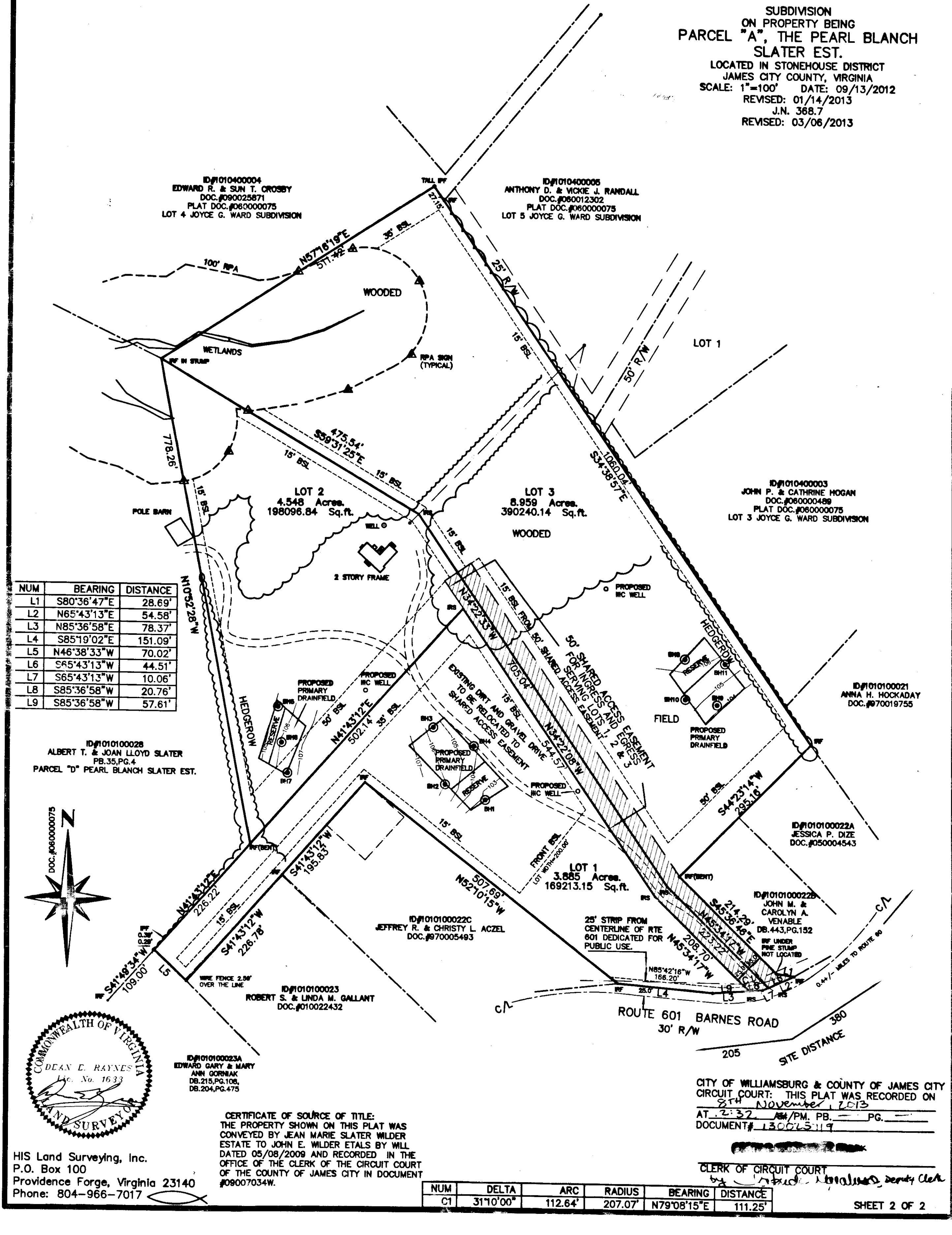
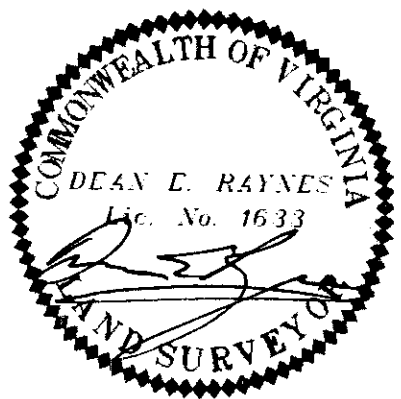
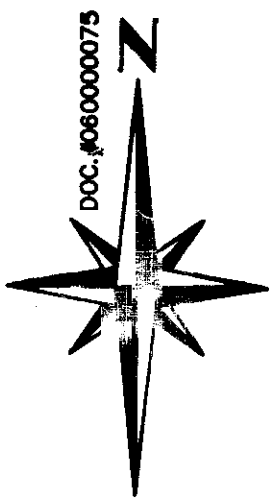


130025719

SUBDIVISION
ON PROPERTY BEING
PARCEL "A", THE PEARL BLANCH
SLATER EST.
LOCATED IN STONEHOUSE DISTRICT
JAMES CITY COUNTY, VIRGINIA
SCALE: 1"=100' DATE: 09/13/2012
REVISED: 01/14/2013
J.N. 368.7
REVISED: 03/06/2013



NUM	BEARING	DISTANCE
L1	S80°36'47"E	28.69'
L2	N65°43'13"E	54.58'
L3	N85°36'58"E	78.37'
L4	S85°19'02"E	151.09'
L5	N46°38'33"W	70.02'
L6	S85°43'13"W	44.51'
L7	S65°43'13"W	10.06'
L8	S85°36'58"W	20.76'
L9	S85°36'58"W	57.61'



HIS Land Surveying, Inc.
P.O. Box 100
Providence Forge, Virginia 23140
Phone: 804-966-7017

CERTIFICATE OF SOURCE OF TITLE:
THE PROPERTY SHOWN ON THIS PLAT WAS
CONVEYED BY JEAN MARIE SLATER WILDER
ESTATE TO JOHN E. WILDER ETALS BY WILL
DATED 05/08/2009 AND RECORDED IN THE
OFFICE OF THE CLERK OF THE CIRCUIT COURT
OF THE COUNTY OF JAMES CITY IN DOCUMENT
#09007034W.

NUM	DELTA	ARC	RADIUS	BEARING	DISTANCE
C1	31°10'00"	112.64'	207.07'	N79°08'15"E	111.25'

SHEET 2 OF 2

CITY OF WILLIAMSBURG & COUNTY OF JAMES CITY
CIRCUIT COURT: THIS PLAT WAS RECORDED ON
8TH NOVEMBER 2013
AT 2:32 PM. PG. 1
DOCUMENT# 130025719

CLERK OF CIRCUIT COURT
by *[Signature]* Deputy Clerk

2 Large Small Plat(s) Recorded
herein as # 130025719