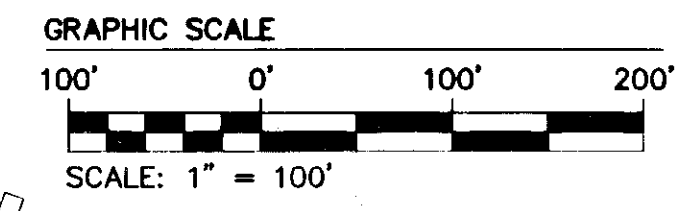
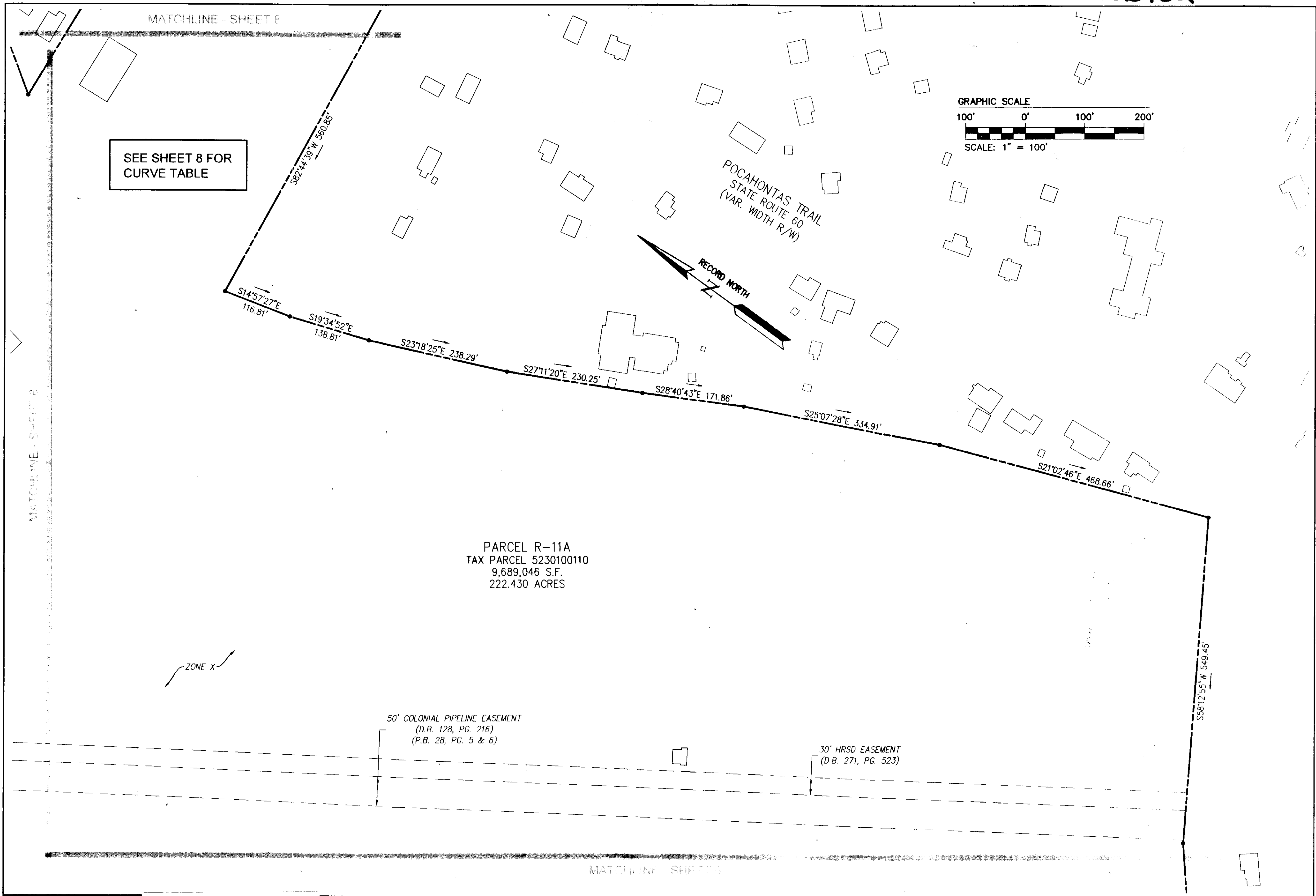


130023432



SEE SHEET 8 FOR
 CURVE TABLE

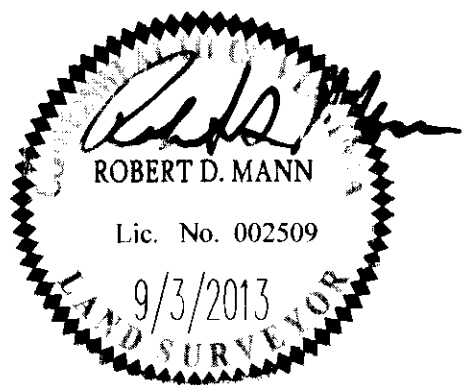
PARCEL R-11A
 TAX PARCEL 5230100110
 9,689,046 S.F.
 222.430 ACRES

50' COLONIAL PIPELINE EASEMENT
 (D.B. 128, PG. 216)
 (P.B. 28, PG. 5 & 6)

30' HRSD EASEMENT
 (D.B. 271, PG. 523)

ZONE X

City of Williamsburg & County of James City Circuit Court: This PLAT was recorded on 15 October, 2013 at 12:15 AM/PM, PB — PG — Document # 130023432 BETSY B. WOOLRIDGE, CLERK <i>[Signature]</i> , Dep. Clerk			
2	9/3/13	REVISED AS PER COMMENT LETTERS	JCA
1	7/11/13	REVISED AS PER COMMENT LETTERS	JCA



AES
 CONSULTING ENGINEERS
 1317 Executive Blvd, Suite 150
 Chesapeake, Virginia 23320
 Phone: (757) 410-7436
 www.aesva.com

COMPOSITE PLAT OF SUBDIVISION
 PARCEL R-11
 KINGSMILL RESORT
 PROPERTY OF
XANTERRA KINGSMILL, LLC
 ROBERTS DISTRICT COUNTY OF JAMES CITY VIRGINIA

Project Contacts	RDM
Project Number	7753-4u
Scale	Date
1"=100'	01/29/13
Sheet Number	
7	