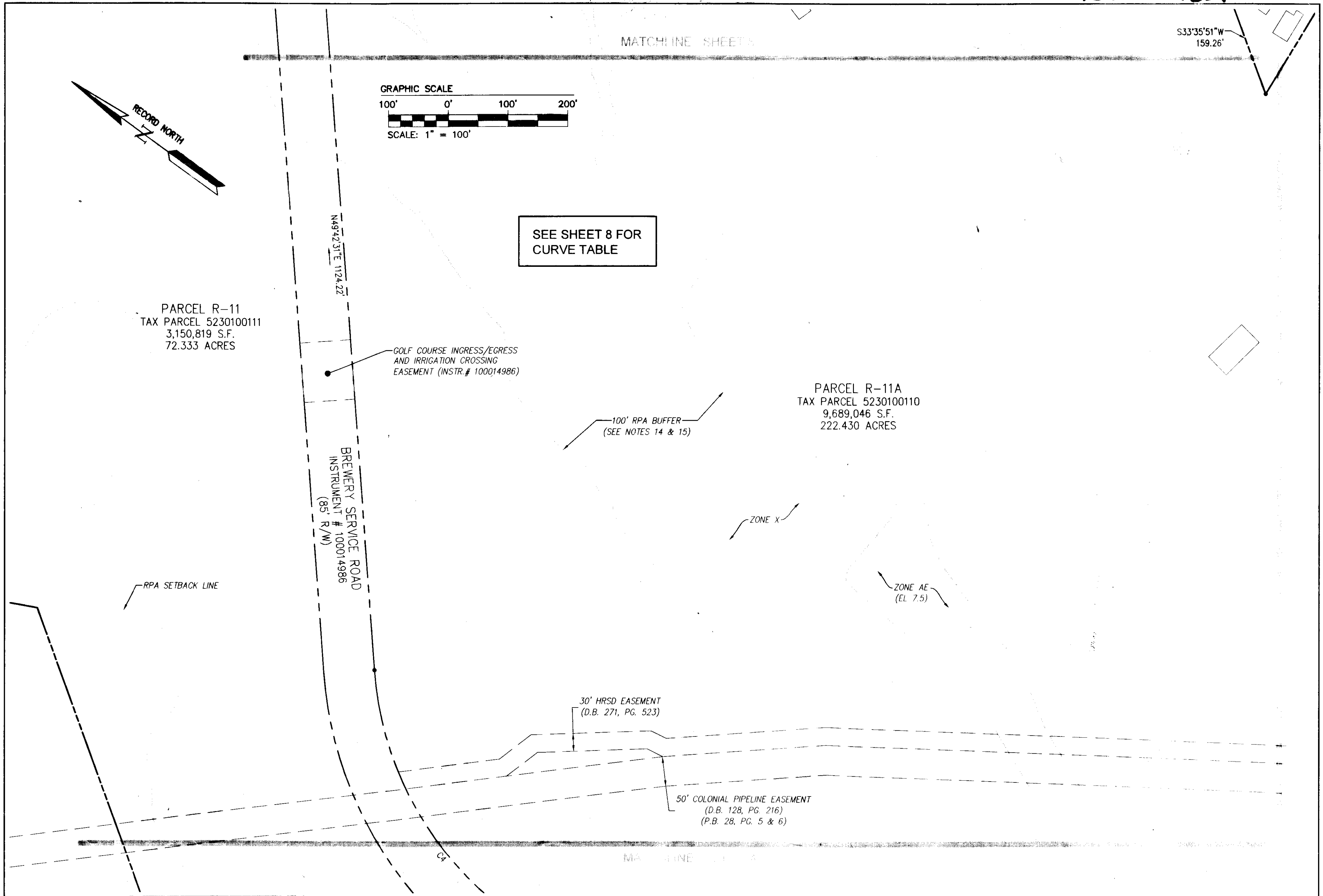
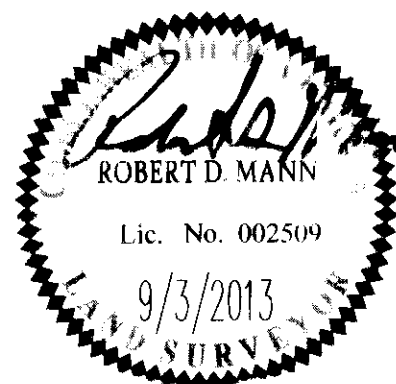


130023432



City of Williamsburg & County of James City  
Circuit Court: This PLAT was recorded on  
**15 October, 2013**  
at **12:15** AM/PM, PG. **1**  
Document # **130023432**  
BETSY B. WOOLRIDGE, CLERK  
*Betsy Woolridge*, Dep. Clerk

Rev	Date	Description	Revised by
2	9/3/13	REVISED AS PER COMMENT LETTERS	JCA
1	7/11/13	REVISED AS PER COMMENT LETTERS	JCA



2 Large/Small Plat(s) Recorded  
herewith as # **130023432**

**AVES**  
CONSULTING ENGINEERS

1317 Executive Blvd. Suite 150  
Chesapeake Virginia 23320  
Phone: (757) 410-7430  
www.avesa.com

Hampton Roads | Central Virginia | Middle Peninsula

COMPOSITE PLAT OF SUBDIVISION  
PARCEL R-11  
KINGSMILL RESORT  
PROPERTY OF  
**XANTERRA KINGSMILL, LLC**

ROBERTS DISTRICT    COUNTY OF JAMES CITY    VIRGINIA

Project Contacts	RDM
Project Number	7753141
Scale	1"=100'
Date	01/29/13
Sheet Number	<b>6</b>