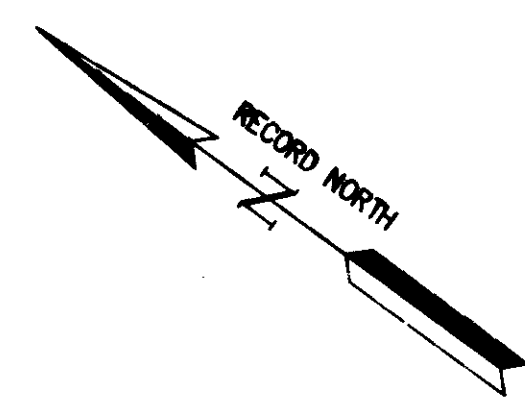
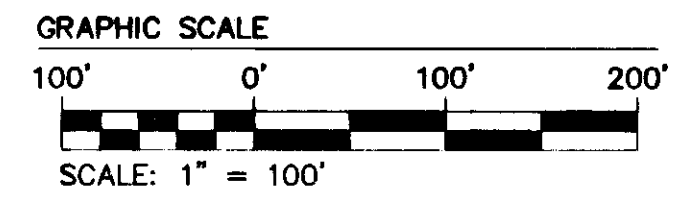


130023432

MATCHLINE - SHEET 7

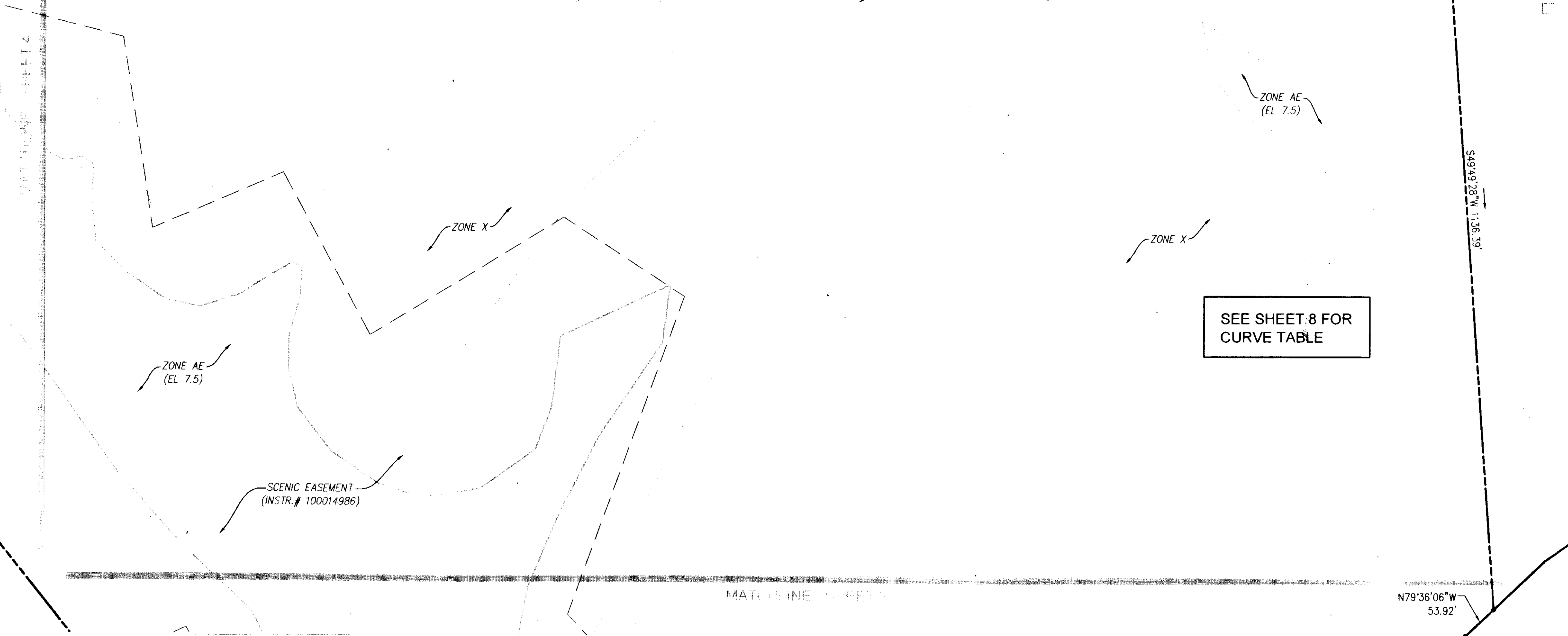


PARCEL R-11A  
TAX PARCEL 5230100110  
9,689,046 S.F.  
222.430 ACRES



100' RPA BUFFER  
(SEE NOTES 14 & 15)

MATCHLINE - SHEET 4



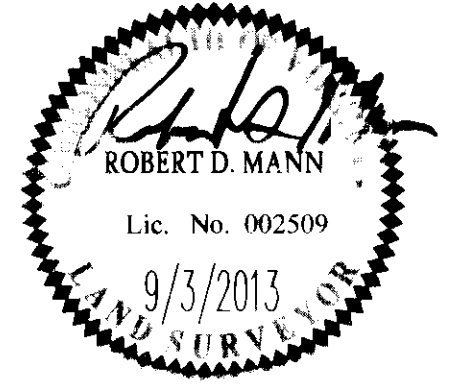
SEE SHEET 8 FOR  
CURVE TABLE

N79°36'06"W  
53.92'

MATCHLINE - SHEET 8

2	9/3/13	REVISED AS PER COMMENT LETTERS	JCA
1	7/11/13	REVISED AS PER COMMENT LETTERS	JCA

City of Williamsburg & County of James City  
Circuit Court: This PLAT was recorded on  
15 October, 2013  
at 12:15 AM/PM, PB PG  
Document # 130023432  
BETSY B. WOOLRIDGE, CLERK  
*Robert Mann*, Dep. Clerk



8 Large/Small Plat(s) Recorded  
herewith as # 130023432

**AES**  
CONSULTING ENGINEERS  
1317 Executive Blvd Suite 150  
Chesapeake, Virginia 23320  
Phone: (757) 410-7436  
www.aesva.com

Hampton Roads | Central Virginia | Middle Peninsula

COMPOSITE PLAT OF SUBDIVISION  
PARCEL R-11  
KINGSMILL RESORT  
PROPERTY OF  
**XANTERRA KINGSMILL, LLC**  
ROBERTS DISTRICT      COUNTY OF JAMES CITY      VIRGINIA

Project Contacts	RDM
Project Number	7753.40
Scale	Date
1"=100'	01/29/13
Sheet Number	
<b>5</b>	