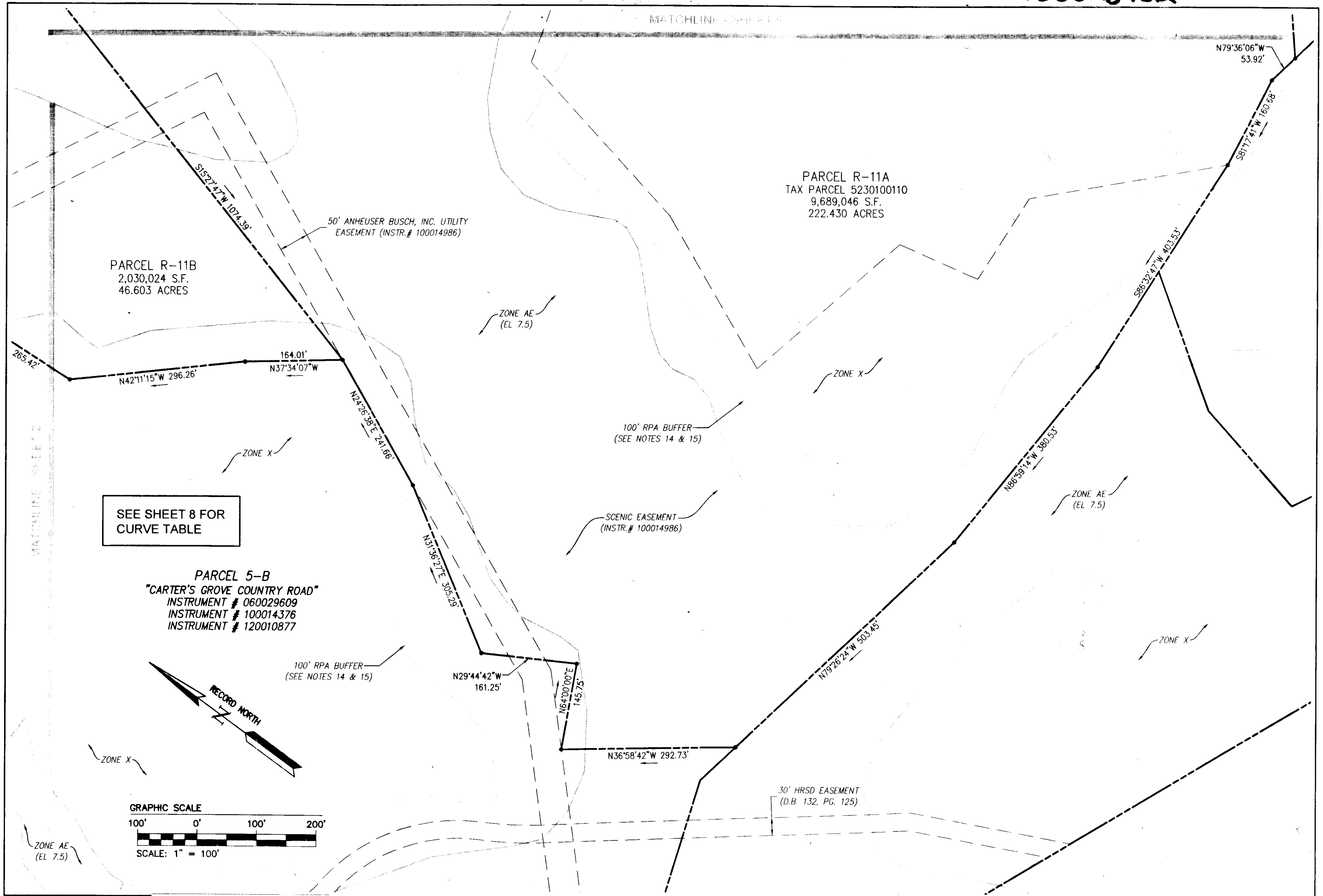
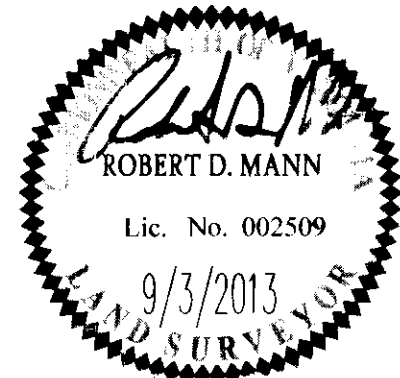


130023432



2	9/3/13	REVISED AS PER COMMENT LETTERS	
1	7/11/13	REVISED AS PER COMMENT LETTERS	JCA
Rev	Date	Description	Revised

City of Williamsburg & County of James City
Circuit Court: This PLAT was recorded on
15 October 2013
at **12:15** PM, PG. **—**
Document # **130023432**
BETSY B. WOOLRIDGE, CLERK
Betsy Woolridge, Dep. Clerk



AES
CONSULTING ENGINEERS
Hampton Roads | Central Virginia | Middle Peninsula

8 Large Plat(s) Recorded
herewith as # **130023432**

1317 Executive Blvd, Suite 150
Chesapeake, Virginia 23320
Phone: (757) 410-7436
www.aesva.com

COMPOSITE PLAT OF SUBDIVISION
PARCEL R-11
KINGSMILL RESORT
PROPERTY OF
XANTERRA KINGSMILL, LLC
ROBERTS DISTRICT COUNTY OF JAMES CITY VIRGINIA

Project Contacts	RDM
Project Number	7753-40
Scale	Date
1"=100'	01/29/13
Sheet Number	
3	