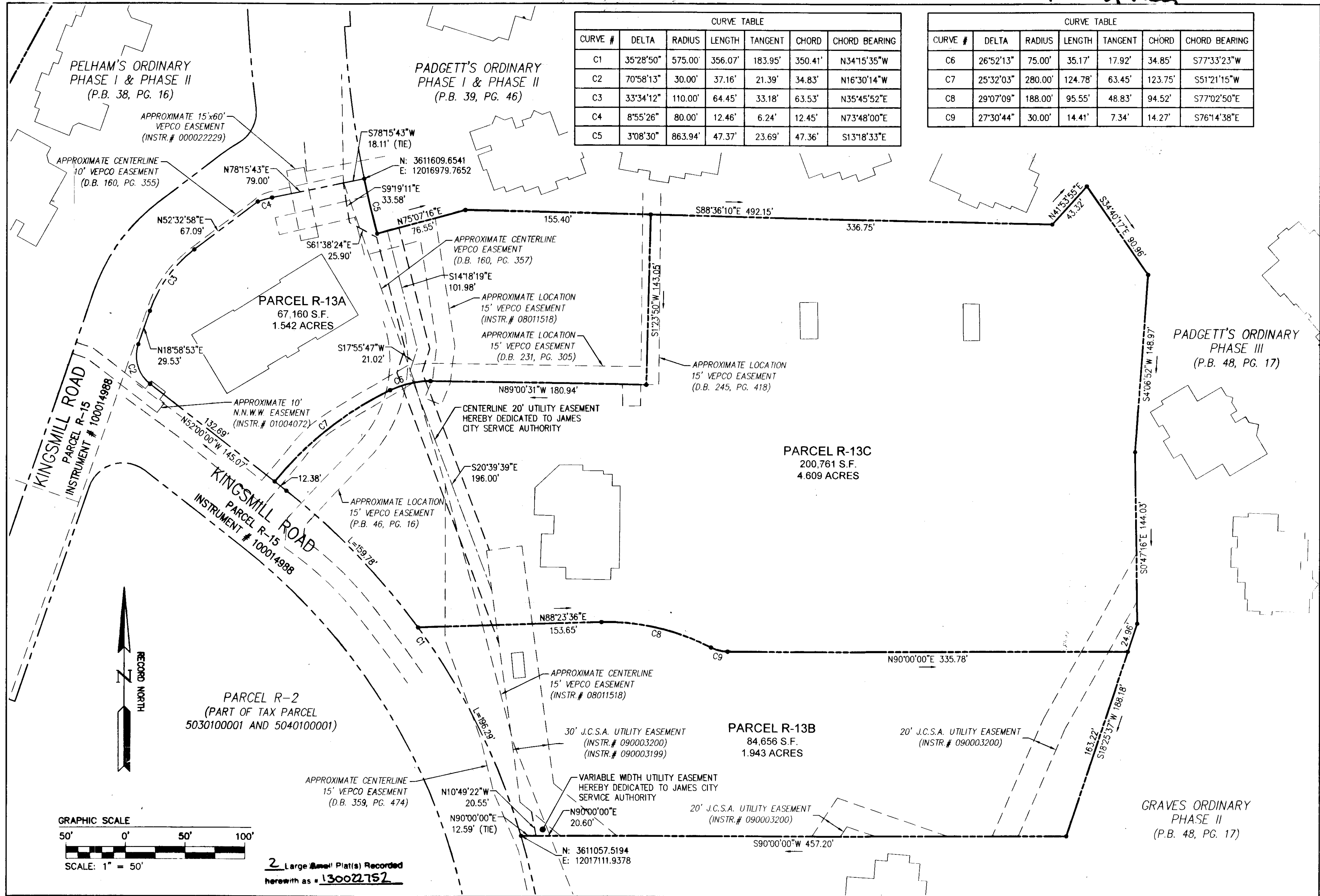
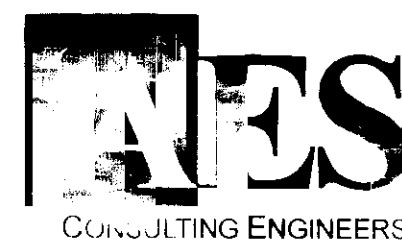
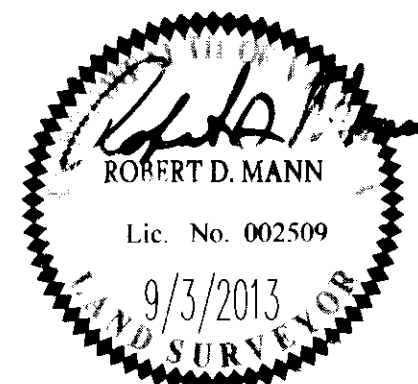


130022752



City of Williamsburg & County of James City Circuit Court: This PLAT was recorded on <b>2 October, 2013</b> at <b>12:57</b> A.M./P.M., PG. <b>—</b> Document # <b>130022752</b> BETSY B. WOOLRIDGE, CLERK <i>Betsy Woolridge</i> Dep. Clerk			
1	7/11/13	REVISED AS PER COMMENT LETTERS	JCA
Rev	Date	Description	Revised



1317 Executive Blvd, Suite 150  
Chesapeake, Virginia 23320  
Phone: (757) 410-7436  
www.aesva.com

Hampton Roads | Central Virginia | Middle Peninsula

COMPOSITE PLAT OF SUBDIVISION  
PARCEL R-13  
KINGSMILL RESORT  
PROPERTY OF  
**XANTERRA KINGSMILL, LLC**  
ROBERTS DISTRICT COUNTY OF JAMES CITY VIRGINIA

Project Contacts	RDM
Project Number	775340
Scale	Date
1"=50'	01/29/13
Sheet Number	
<b>2</b>	