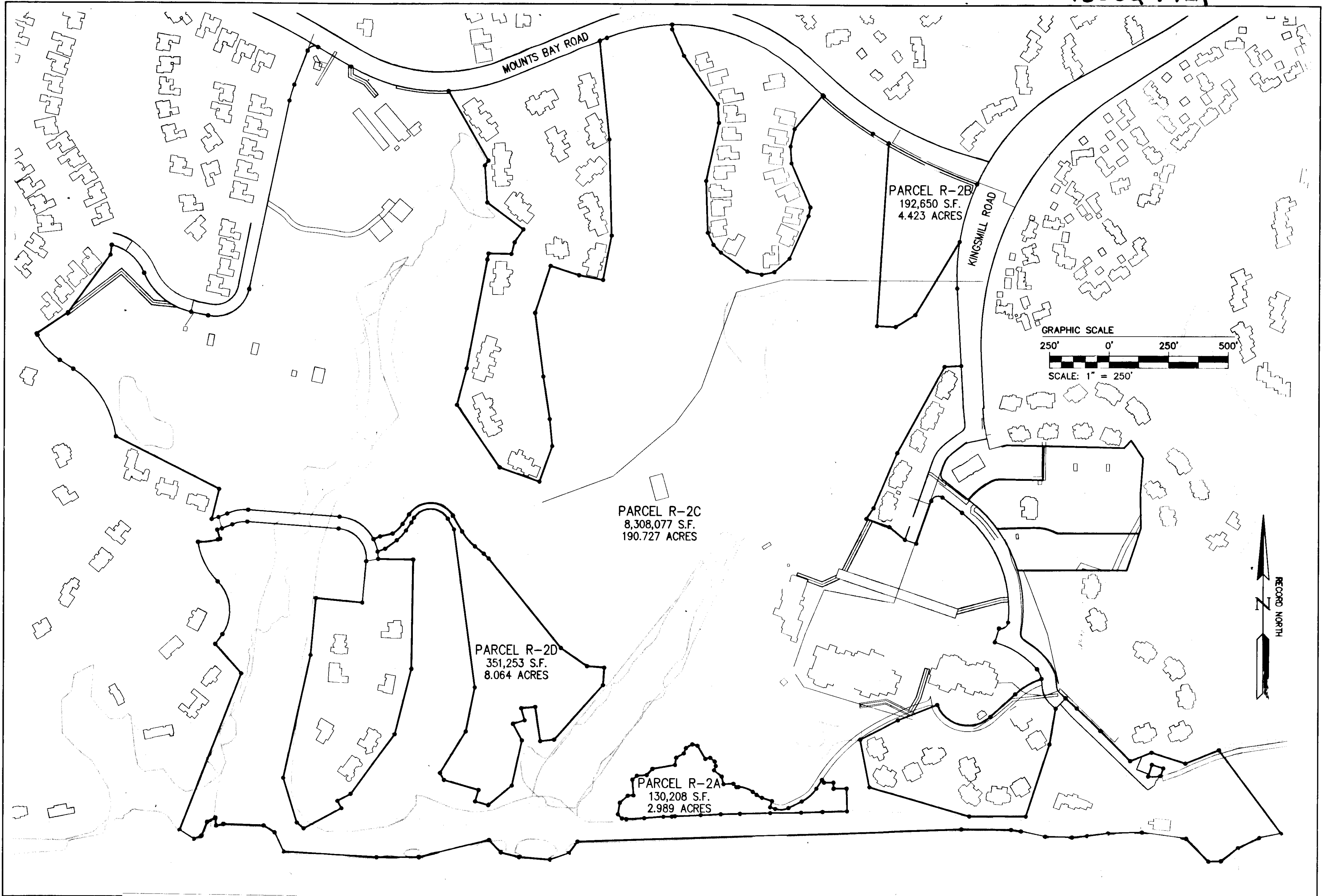


130022751

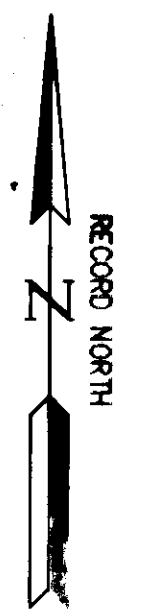
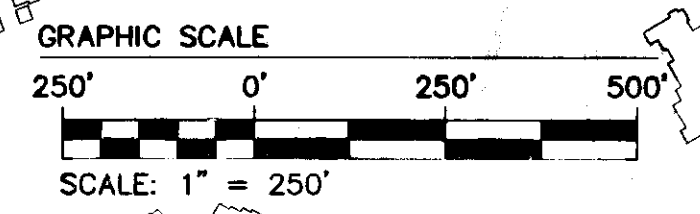


PARCEL R-2B  
192,650 S.F.  
4.423 ACRES

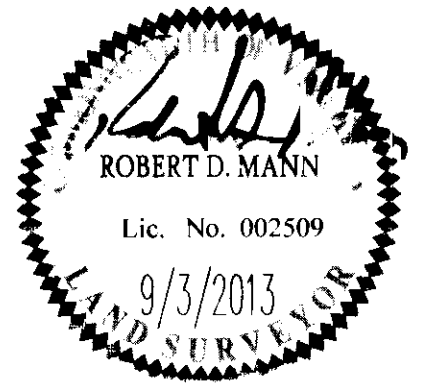
PARCEL R-2C  
8,308,077 S.F.  
190.727 ACRES

PARCEL R-2D  
351,253 S.F.  
8.064 ACRES

PARCEL R-2A  
130,208 S.F.  
2.989 ACRES



City of Williamsburg & County of James City Circuit Court: This PLAT was recorded on <b>2 October, 2013</b> at <u>12:53</u> <u>PM</u> , PB <u>PG</u> Document # <u>130022751</u> BETSY B. WOOLRIDGE, CLERK <i>Betsy Woolridge</i> , Dep. Clerk			
2	9/3/13	REVISED AS PER COMMENT LETTERS	JCA
1	5/8/13	REVISED AS PER COMMENT LETTERS	JCA



**AES**  
CONSULTING ENGINEERS  
1317 Executive Blvd. Suite 150  
Chesapeake, Virginia 23320  
Phone: (757) 410-7436  
www.aesva.com

10 Large (Small) Plat(s) Recorded  
herewith as #130022751

Hampton Roads | Central Virginia | Middle Peninsula

EXHIBIT OF SUBDIVISION  
PARCEL R-2  
KINGSMILL RESORT  
PROPERTY OF  
**XANTERRA KINGSMILL, LLC**  
ROBERTS DISTRICT      COUNTY OF JAMES CITY      VIRGINIA

Project Contacts	RDM
Project Number	7753.40
Scale	Date
1"=250'	05/08/13
Sheet Number	
<b>10</b>	