

GRAVES ORDINARY  
PHASE II  
(P.B. 48, PG. 17)

KINGSMILL ROAD  
PARCEL R-15  
INSTRUMENT # 100014988  
ID# 5110100002

PARCEL R-2C  
8,308,077 S.F.  
190.727 ACRES

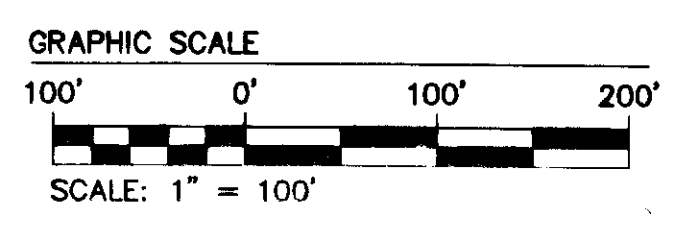
GRAVES ORDINARY  
PHASE II  
(P.B. 48, PG. 17)

JSCA LIFT STATION  
D.B. 553, PG. 798  
2,216 S.F.  
0.051 ACRES

CONFERENCE CENTER  
CONDOMINIUMS  
(P.B. 48, PG. 17-57)

PARCEL R-2C  
8,308,077 S.F.  
190.727 ACRES

JSCA LIFT STATION  
D.B. 553, PG. 798  
2,216 S.F.  
0.051 ACRES

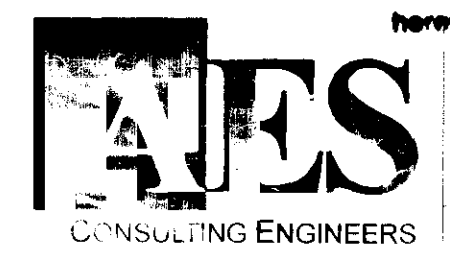
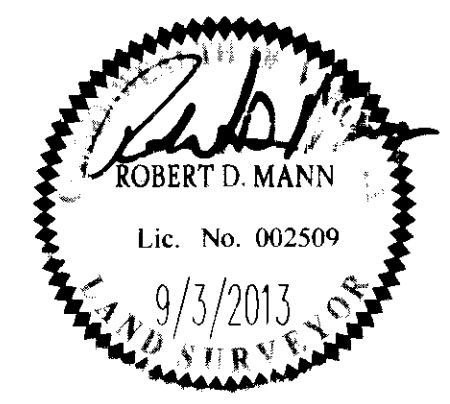


**INSET**  
SCALE: 1" = 50'

SEE SHEET 9 FOR LINE  
AND CURVE TABLES

2	9/3/13	REVISED AS PER COMMENT LETTERS	JCA
1	7/11/13	REVISED AS PER COMMENT LETTERS	JCA

City of Williamsburg & County of James City  
Circuit Court: This PLAT was recorded on  
**2 October, 2013**  
at **12:53** AM/PM, PG. **—**  
Document # **130022751**  
BETSY B. WOOLRIDGE, CLERK  
*Betsy Woolridge*, Dep. Clerk



**10 Large/Small Plat(s) Recorded**  
herewith as # **130022751**  
1317 Executive Blvd Suite 150  
Chesapeake, Virginia 23320  
Phone: (757) 410-7436  
www.aesva.com

COMPOSITE PLAT OF SUBDIVISION  
PARCEL R-2  
KINGSMILL RESORT  
PROPERTY OF  
**XANTERRA KINGSMILL, LLC**  
ROBERTS DISTRICT      COUNTY OF JAMES CITY      VIRGINIA

Project Contacts	RDM
Project Number	775340
Scale	Date
1"=100'	01/29/13
Sheet Number	
<b>8</b>	