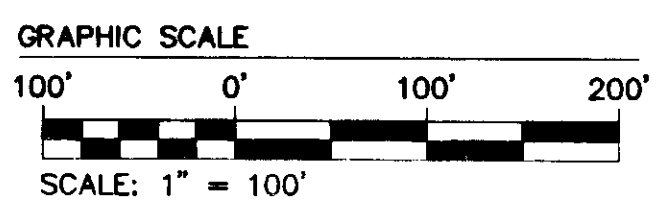
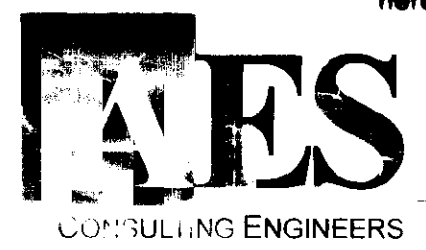
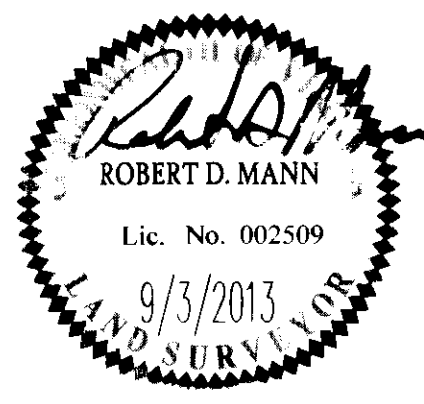


SEE SHEET 9 FOR LINE AND CURVE TABLES



City of Williamsburg & County of James City			
Circuit Court: This PLAT was recorded on			
2 October, 2013			
at 12:53 PM, PG. 1			
Document # 130022751			
BETSY B. WOOLRIDGE, CLERK			
<i>Betsy Woolridge</i> , Dep. Clerk			
2	9/3/13	REVISED AS PER COMMENT LETTERS	JCA
1	7/11/13	REVISED AS PER COMMENT LETTERS	JCA
Rev	Date	Description	Revised by



10 Large/Small Plat(s) Recorded  
herewith as # 130022751

1317 Executive Blvd, Suite 150  
Chesapeake, Virginia 23320  
Phone: (757) 410-7436

www.aesva.com

Hampton Roads | Central Virginia | Middle Peninsula

COMPOSITE PLAT OF SUBDIVISION  
PARCEL R-2  
KINGSMILL RESORT  
PROPERTY OF  
**XANTERRA KINGSMILL, LLC**

ROBERTS DISTRICT    COUNTY OF JAMES CITY    VIRGINIA

Project Contacts	RDM
Project Number	775340
Scale	Date
1"=100'	01/29/13
Sheet Number	
<b>5</b>	