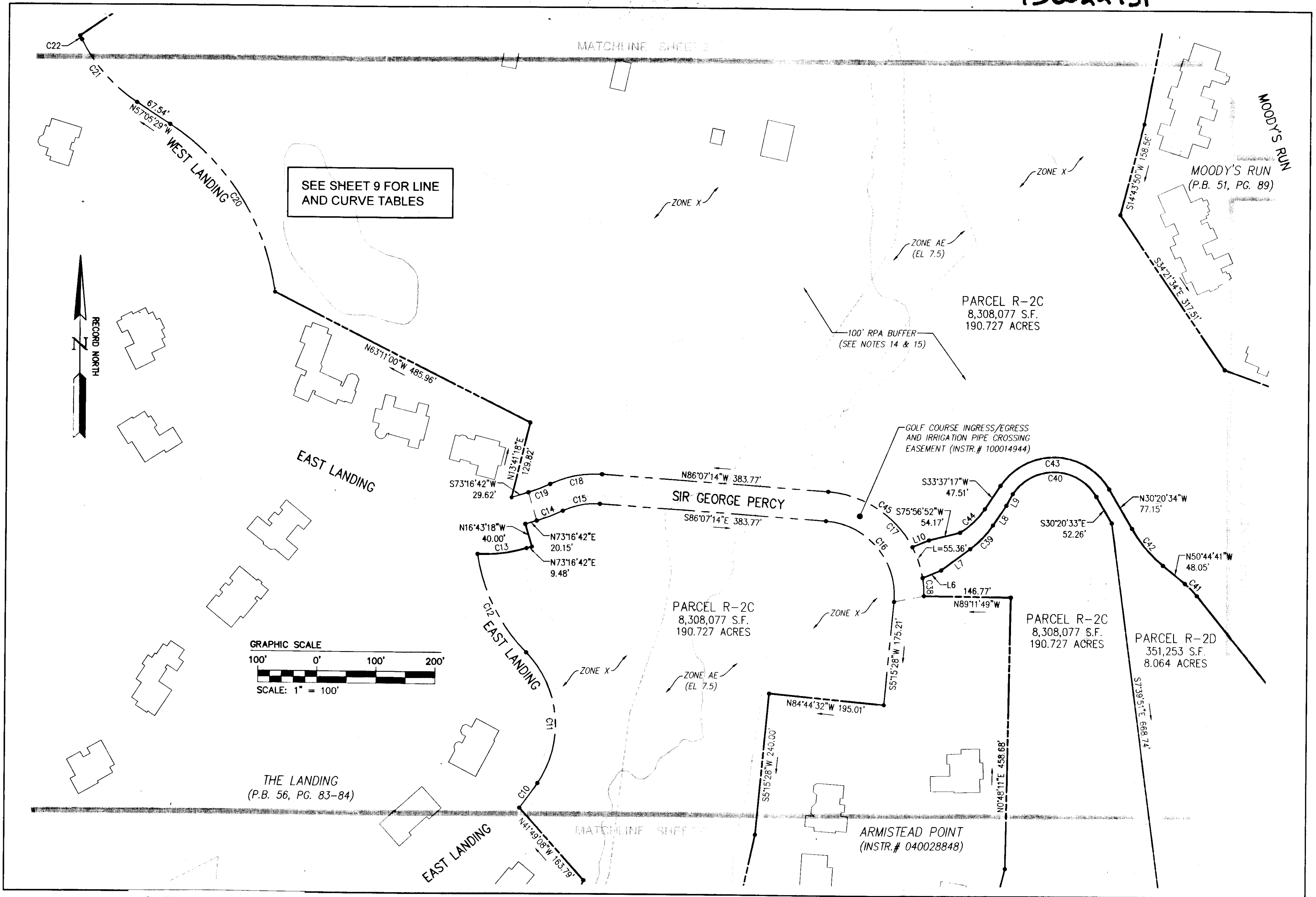
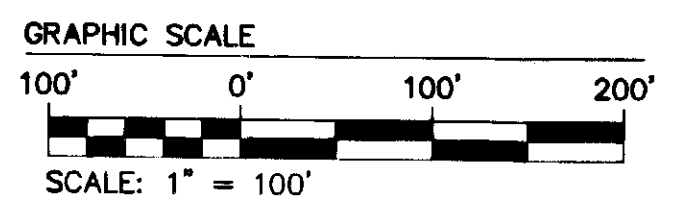


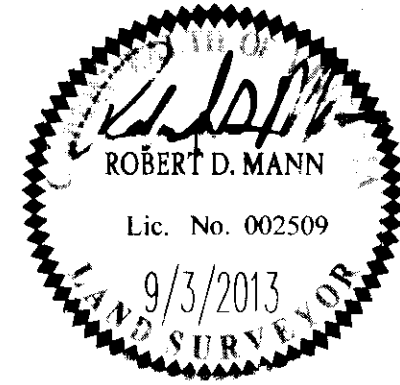
130022751



SEE SHEET 9 FOR LINE AND CURVE TABLES



City of Williamsburg & County of James City		Circuit Court: This PLAT was recorded on	
		2 October, 2013	
		at 12:53 PM, PG. 4	
		Document # 130022751	
		BETSY B. WOOLRIDGE, CLERK	
		<i>Patrick A. Adams</i> , Dep. Clerk	
2	9/3/13	REVISED AS PER COMMENT LETTERS	JCA
1	7/11/13	REVISED AS PER COMMENT LETTERS	JCA



10 Large/Small Plat(s) Recorded hereunder as = 130022751!

NES
CONSULTING ENGINEERS

1317 Executive Blvd, Suite 150
Chesapeake, Virginia 23320
Phone: (757) 410-7436
www.aesva.com

Hampton Roads | Central Virginia | Middle Peninsula

COMPOSITE PLAT OF SUBDIVISION
PARCEL R-2
KINGSMILL RESORT
PROPERTY OF
XANTERRA KINGSMILL, LLC

ROBERTS DISTRICT COUNTY OF JAMES CITY VIRGINIA

Project Contacts		RDM
Project Number		7753-4U
Scale	Date	
1"=100'	01/29/13	
Sheet Number		
4		