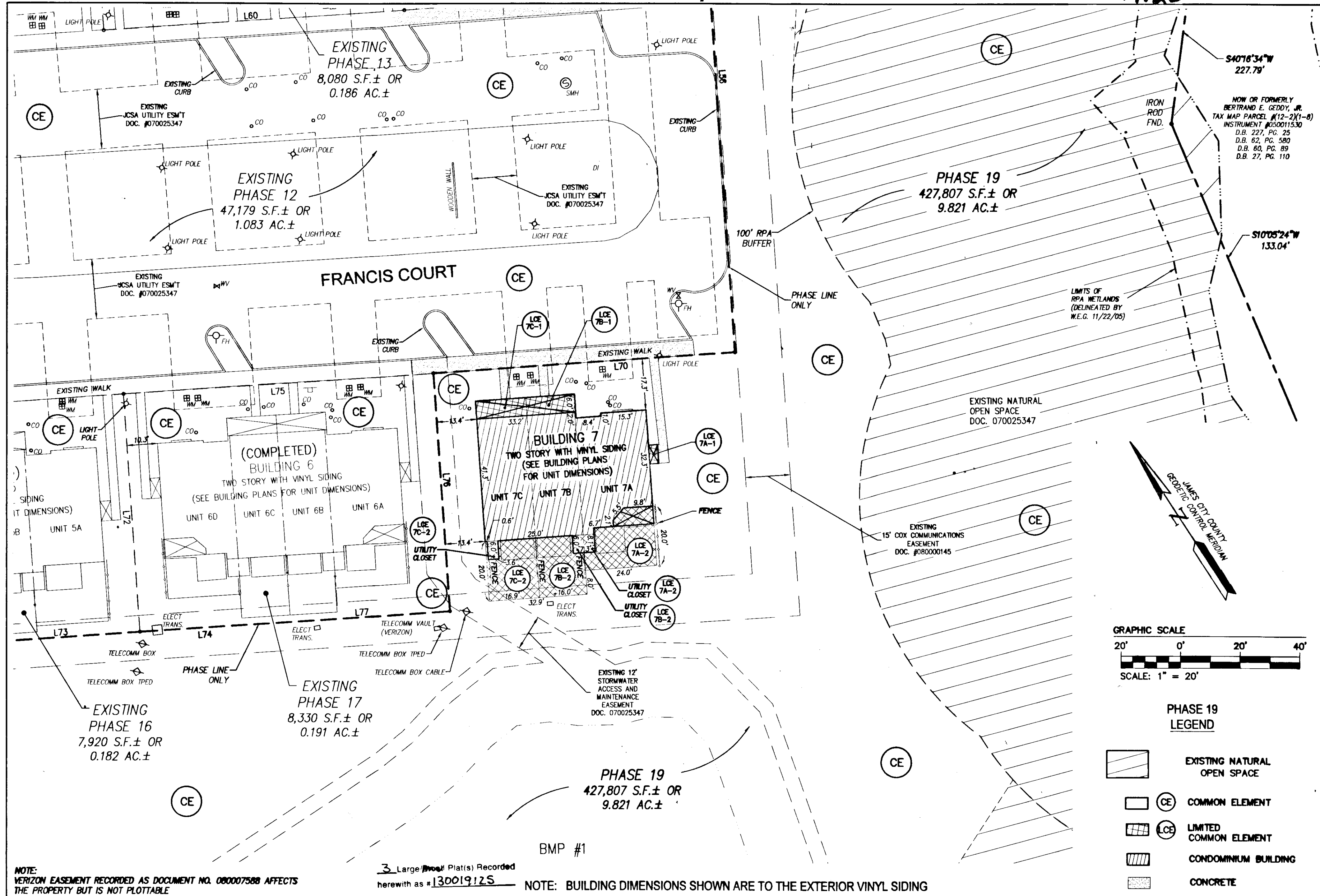
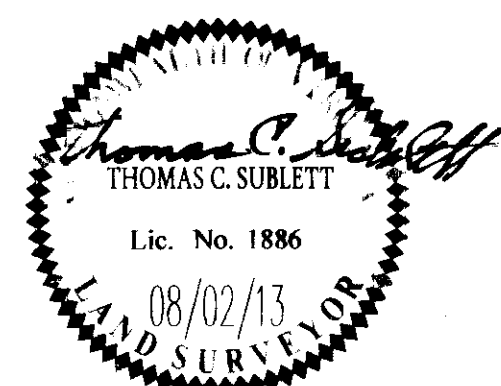


130019125



Rev.	Date	Description	Revised By

City of Williamsburg & County of James City
Circuit Court: This PLAT was recorded on
14 August 2013
at 9:40 AM AM/PM, PG. —
Document # 130019125
BETSY B. WOOLRIDGE, CLERK
Betsy Woolridge, Dep. Clerk



AES
CONSULTING ENGINEERS
Hampton Roads | Central Virginia | Middle Peninsula

5248 Olde Towne Road, Suite 1
Williamsburg, Virginia 23188
Phone: (757) 253-0040
Fax: (757) 220-8994
www.aesva.com

**PLAT OF CONDOMINIUM
WEATHERLY AT WHITEHALL
PHASE 19**

STONEHOUSE DISTRICT JAMES CITY COUNTY VIRGINIA

Project Contacts:	JFS
Project Number:	9048-09
Scale:	1"=20'
Date:	08/02/13
Sheet Number	3 OF 3