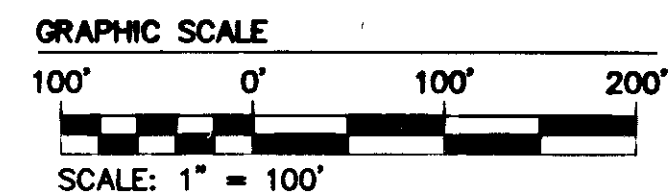


130017245

STATE ROUTE #746 - OLD STAGE ROAD - 100' R/W
(FORMERLY STATE ROUTE #168)



LINE TABLE

LINE	BEARING	LENGTH
L1	N73°08'04\"	275.48'
L2	N69°48'47\"	428.79'
L3	S45°25'20\"	18.77'
L4	S33°04'56\"	90.85'
L5	S34°42'41\"	46.25'
L6	S33°02'40\"	155.17'
L8	S65°57'06\"	120.05'
L9	S33°02'40\"	386.47'
L10	S29°01'18\"	80.00'
L11	N80°58'42\"	21.56'
L12	S20°11'13\"	82.50'
L13	S89°48'47\"	200.00'
L14	N20°11'13\"	82.50'
L15	S89°48'47\"	393.85'
L16	S20°11'13\"	82.50'
L17	S85°11'14\"	10.25'
L18	N65°39'32\"	113.28'
L19	N03°29'10\"	157.63'
L20	S89°48'47\"	100.00'
L21	N20°11'13\"	82.50'
L22	N70°27'43\"	180.42'
L23	N32°27'42\"	38.82'
L24	S34°42'41\"	341.49'
L25	N89°48'47\"	110.70'
L26	N20°11'13\"	82.50'
L27	S89°48'47\"	100.00'
L28	N32°27'42\"	111.84'
L29	S89°48'47\"	116.09'
L30	S89°48'47\"	110.70'
L31	N20°11'13\"	82.50'
L32	N34°42'41\"	33.38'
L33	S55°17'19\"	83.41'
L34	S34°42'41\"	105.65'
L35	S55°17'19\"	285.59'
L36	N34°42'41\"	140.32'
L37	N29°24'44\"	44.29'
L38	N34°42'41\"	101.46'
L39	N34°42'41\"	101.00'
L40	S55°17'19\"	83.41'
L41	S34°42'41\"	101.00'
L42	N34°42'41\"	105.65'
L43	N55°17'19\"	83.41'
L44	N34°42'41\"	89.50'
L45	S55°17'19\"	80.00'
L46	N34°42'41\"	53.03'
L47	N34°42'41\"	212.01'
L48	S55°17'19\"	80.00'
L49	S34°42'41\"	101.00'
L50	N34°42'41\"	284.35'
L51	N55°17'19\"	80.00'
L52	S34°42'41\"	140.32'
L53	S80°58'42\"	110.20'
L54	N29°01'18\"	80.00'
L55	N80°58'42\"	102.56'
L56	N29°01'18\"	202.18'
L57	N60°58'42\"	333.33'
L58	S80°58'42\"	101.00'
L59	N29°01'18\"	80.00'
L60	N80°58'42\"	101.00'
L61	N80°58'42\"	313.77'
L62	N89°48'47\"	89.65'
L63	N20°11'13\"	82.50'
L64	S89°48'47\"	101.15'
L65	N89°48'47\"	101.15'
L66	S80°58'42\"	30.84'
L67	N29°01'18\"	80.00'
L68	N80°58'42\"	8.88'
L69	S89°48'47\"	86.28'
L70	S80°58'42\"	101.27'

L71	S80°58'42\"	88.00'
L72	N29°01'18\"	80.00'
L73	N60°58'42\"	98.00'
L74	S80°58'42\"	212.01'
L75	S80°58'42\"	104.12'
L76	N29°01'18\"	80.00'
L77	N60°58'42\"	104.12'
L78	S80°58'42\"	102.56'
L79	S29°01'18\"	80.00'

3 Large/Small Plat(s) Recorded herewith as # 130017245

AREA TABULATION

PHASE 18 SUBMITTED LAND = 8,206 S.F.± OR 0.188 AC.±

PHASES 1 - 17 (EXISTING) = 580,810 S.F.± OR 13.334 AC.±

ADDITIONAL LAND 2 = 427,807 S.F.± OR 9.821 AC.±

TOTAL AREA = 1,016,823 S.F.± OR 23.343 AC.±

CURVE TABLE

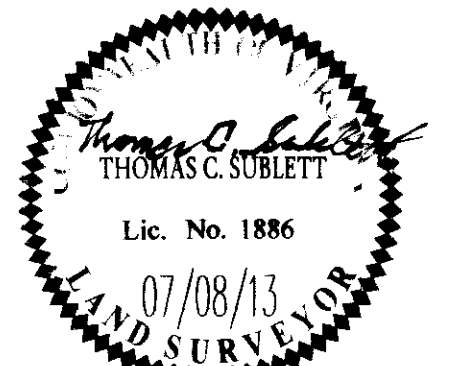
CURVE	DELTA	RADIUS	LENGTH	TANGENT	CHORD	CHORD BEARING
C1	88°27'56\"	76.39'	117.95'	74.37'	106.56'	S89°18'43\"
C2	118°55'00\"	76.39'	155.88'	124.46'	130.21'	S34°22'51\"
C3	10°43'08\"	76.39'	14.29'	7.17'	14.27'	N87°28'48\"
C4	106°11'52\"	76.39'	141.59'	101.74'	122.18'	S29°01'18\"

NOTE: VERIZON EASEMENT RECORDED AS DOCUMENT NO. 080007588 AFFECTS THE PROPERTY BUT IS NOT PLOTTABLE

- SUBMITTED LAND AND EXISTING PHASE
- ADDITIONAL LAND
- EXISTING NATURAL OPEN SPACE

- P.O.B. #1 POINT OF BEGINNING PHASE 18
- P.O.B. #2 POINT OF BEGINNING ADDITIONAL LAND 2
- P.O.C. #1 POINT OF COMMENCEMENT PHASE 18

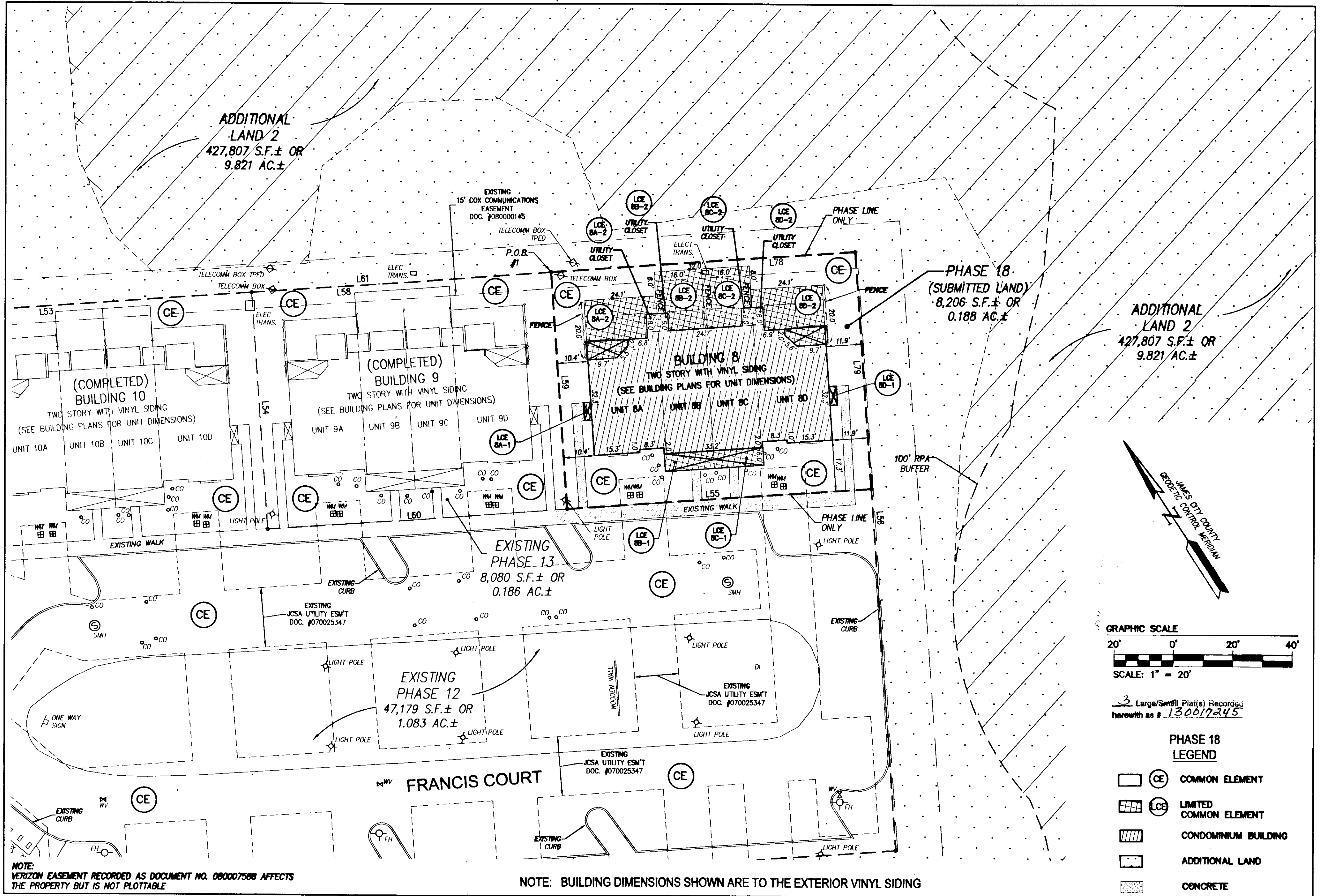
City of Williamsburg & County of James City
Circuit Court: This PLAT was recorded on
at 4:55 AM/PM, PB PG
Document # 130017245
BETSY B. WOOLRIDGE, CLERK
Dep. Clerk



AES
CONSULTING ENGINEERS
5248 Old Towne Road, Suite 1
Williamsburg, Virginia 23186
Phone: (757) 253-0040
Fax: (757) 220-8994
www.aesva.com

PLAT OF CONDOMINIUM
WEATHERLY AT WHITEHALL
PHASE 18
STONEHOUSE DISTRICT JAMES CITY COUNTY VIRGINIA

Project Contacts: JFS
Project Number: 9048-09
Scale: 1"=100' Date: 07/08/13
Sheet Number
2 OF 3

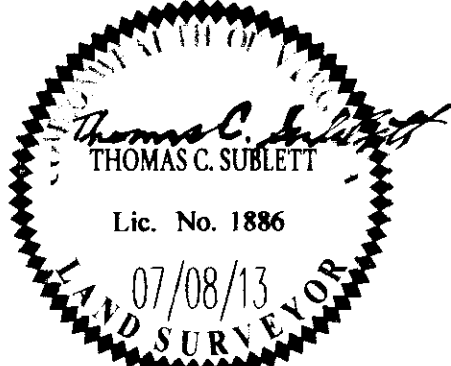


NOTE: VERIZON EASEMENT RECORDED AS DOCUMENT NO. 080007588 AFFECTS THE PROPERTY BUT IS NOT PLOTTABLE

NOTE: BUILDING DIMENSIONS SHOWN ARE TO THE EXTERIOR VINYL SIDING

Rev	Date	Revised By

City of Williamsburg & County of James City
 Circuit Court: This PLAT was recorded on
 at 4:55 AM/PM, PG. 24
 Document # 130017245
 BETSY B. WOOLRIDGE, CLERK
 By Thomas C. Sublett Dep. Clerk



AES
 CONSULTING ENGINEERS
 Hampton Roads | Central Virginia | Middle Peninsula
 5248 Old Towne Road, Suite 1
 Williamsburg, Virginia 23188
 Phone: (757) 253-0040
 Fax: (757) 220-8994
 www.aesva.com

**PLAT OF CONDOMINIUM
 WEATHERLY AT WHITEHALL
 PHASE 18**
 STONEHOUSE DISTRICT | JAMES CITY COUNTY | VIRGINIA

Project Contacts:	JFS
Project Number:	9048-09
Scale:	1"=20'
Date:	07/08/13
Sheet Number	3 OF 3