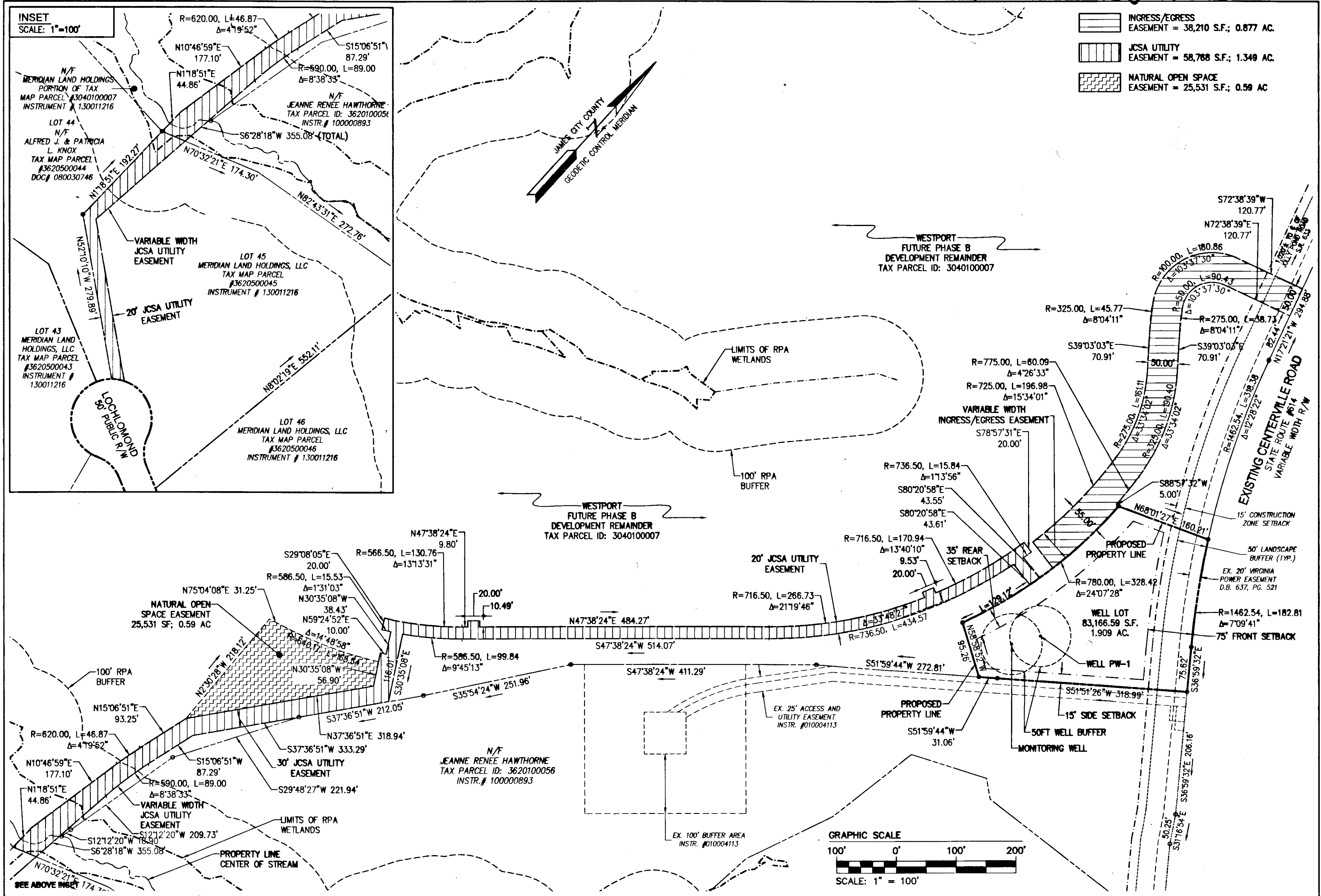
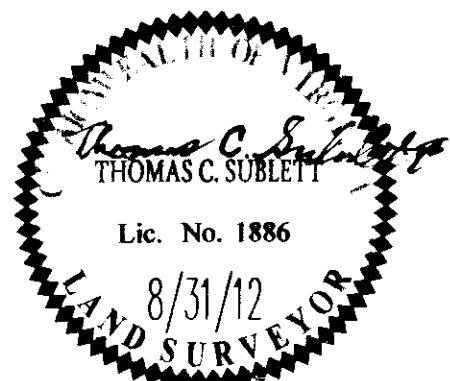


130016313



City of Williamsburg & County of James City			
Circuit Court: This PLAT was recorded on			
10 July 2013			
at 1:31 PM, PB PG			
Document # 130016313			
BETSY B. WOOLRIDGE, CLERK			
Dep. Clerk			
1	8/31/12	REVISED PER JCC COMMENTS DATED JUNE 2012	JAG
Rev	Date	Description	Revised By



**NES**  
CONSULTING ENGINEERS

5248 Olde Towne Road, Suite 1  
Williamsburg, Virginia 23188  
Phone: (757) 253-0040  
Fax: (757) 220-8994  
www.nesva.com

Hampton Roads | Central Virginia | Middle Peninsula

PLAT OF SUBDIVISION OF WELL LOT

**WESTPORT**  
AT FORD'S COLONY

POWhatan DISTRICT      JAMES CITY COUNTY      VIRGINIA

Project Contacts: JAG, AMR

Project Number: W10145

Scale: 1"=100'      Date: 6/12/12

Sheet Number

**2 OF 2**