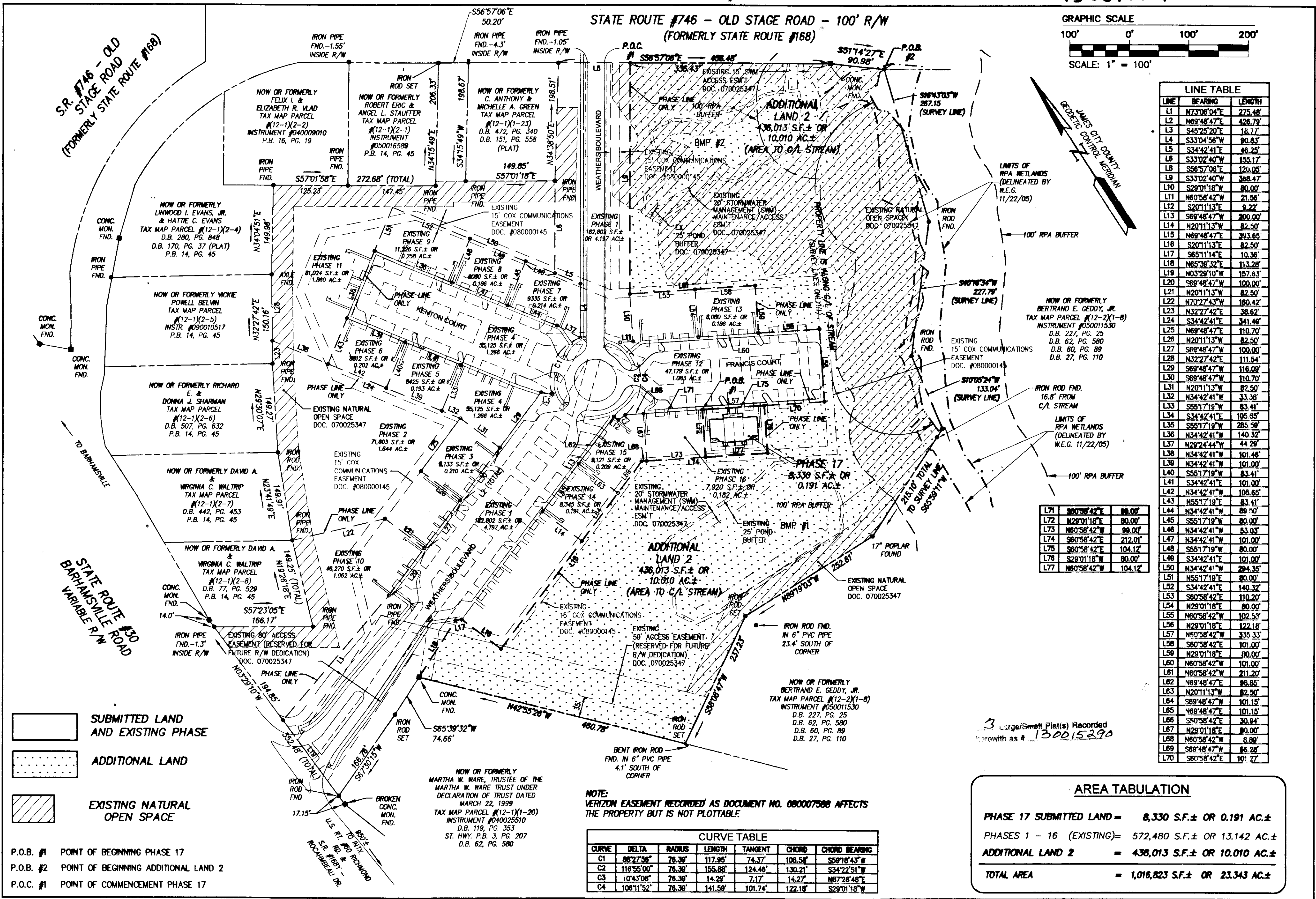
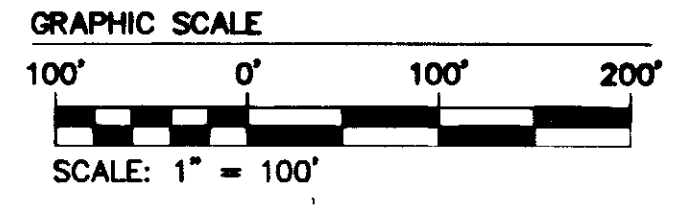


130015290



LINE	BEARING	LENGTH
L1	N73°06'04\"	275.48'
L2	N89°48'47\"	428.79'
L3	S45°28'20\"	18.77'
L4	S33°04'56\"	80.83'
L5	S34°42'41\"	48.25'
L6	S33°02'40\"	155.17'
L7	S86°57'06\"	120.05'
L8	S33°02'40\"	368.47'
L9	S29°01'18\"	80.00'
L10	N80°58'42\"	21.56'
L11	S20°11'13\"	9.22'
L12	S89°48'47\"	200.00'
L13	N20°11'13\"	82.50'
L14	N20°11'13\"	82.50'
L15	N89°48'47\"	393.65'
L16	S20°11'13\"	82.50'
L17	S86°57'14\"	10.36'
L18	N85°39'32\"	113.28'
L19	N83°29'10\"	157.63'
L20	S89°48'47\"	100.00'
L21	N20°11'13\"	82.50'
L22	N70°27'43\"	180.42'
L23	N32°27'42\"	38.62'
L24	S34°42'41\"	341.46'
L25	N89°48'47\"	110.70'
L26	N20°11'13\"	82.50'
L27	S89°48'47\"	100.00'
L28	N32°27'42\"	111.54'
L29	S89°48'47\"	116.09'
L30	S89°48'47\"	110.70'
L31	N20°11'13\"	82.50'
L32	S34°42'41\"	33.38'
L33	S55°17'19\"	83.41'
L34	S34°42'41\"	105.65'
L35	S55°17'19\"	285.59'
L36	N34°42'41\"	140.32'
L37	N29°24'44\"	44.28'
L38	N34°42'41\"	101.46'
L39	N34°42'41\"	101.00'
L40	S55°17'19\"	83.41'
L41	S34°42'41\"	101.00'
L42	N34°42'41\"	105.65'
L43	N55°17'19\"	83.41'
L44	N34°42'41\"	89.00'
L45	S55°17'19\"	80.00'
L46	N34°42'41\"	53.03'
L47	N80°58'42\"	212.01'
L48	S55°17'19\"	80.00'
L49	S34°42'41\"	101.00'
L50	N34°42'41\"	284.35'
L51	N55°17'19\"	80.00'
L52	S34°42'41\"	140.32'
L53	S80°58'42\"	110.20'
L54	N29°01'18\"	80.00'
L55	N80°58'42\"	102.53'
L56	N29°01'18\"	122.18'
L57	N80°58'42\"	335.33'
L58	S80°58'42\"	101.00'
L59	N29°01'18\"	80.00'
L60	N80°58'42\"	101.00'
L61	N80°58'42\"	211.20'
L62	N89°48'47\"	86.85'
L63	N20°11'13\"	82.50'
L64	S89°48'47\"	101.15'
L65	N89°48'47\"	101.15'
L66	S80°58'42\"	30.84'
L67	N29°01'18\"	80.00'
L68	N80°58'42\"	8.89'
L69	S89°48'47\"	86.28'
L70	S80°58'42\"	101.27'

L71	S80°58'42\"	88.00'
L72	N29°01'18\"	80.00'
L73	N80°58'42\"	99.00'
L74	S80°58'42\"	212.01'
L75	S80°58'42\"	104.12'
L76	S29°01'18\"	80.00'
L77	N80°58'42\"	104.12'

3 Large/Small Plat(s) Recorded herewith as # 130015290

AREA TABULATION	
PHASE 17 SUBMITTED LAND =	8,330 S.F.± OR 0.191 AC.±
PHASES 1 - 16 (EXISTING) =	572,480 S.F.± OR 13.142 AC.±
ADDITIONAL LAND 2 =	436,013 S.F.± OR 10.010 AC.±
TOTAL AREA	= 1,016,823 S.F.± OR 23.343 AC.±

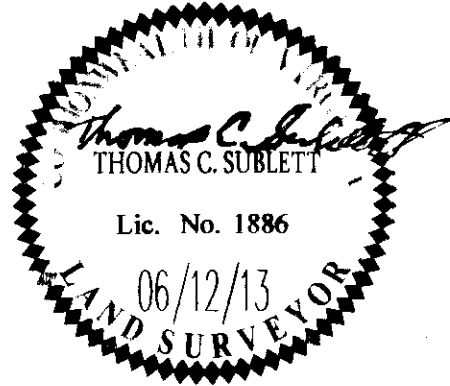
CURVE TABLE						
CURVE	DELTA	RADIUS	LENGTH	TANGENT	CHORD	CHORD BEARING
C1	88°27'36\"	76.39'	117.95'	74.37'	106.58'	S58°18'43\"
C2	116°55'00\"	76.39'	155.88'	124.48'	130.21'	S34°22'51\"
C3	10°43'08\"	76.39'	14.28'	7.17'	14.27'	N87°28'48\"
C4	106°11'52\"	76.39'	141.59'	101.74'	122.18'	S29°01'18\"

- SUBMITTED LAND AND EXISTING PHASE
- ADDITIONAL LAND
- EXISTING NATURAL OPEN SPACE

- P.O.B. #1 POINT OF BEGINNING PHASE 17
- P.O.B. #2 POINT OF BEGINNING ADDITIONAL LAND 2
- P.O.C. #1 POINT OF COMMENCEMENT PHASE 17

Rev	Date	By	Revised By

City of Williamsburg & County of James City
 Circuit Court: This PLAT was recorded on
25 June 2013
 at 3:16 AM/PM, PB PG
 Document # 130015290
 BETSY B. WOOLRIDGE, CLERK
 By Thomas C. Sublett, Dep. Clerk



WES
 CONSULTING ENGINEERS
 5248 Old Towne Road, Suite 1
 Williamsburg, Virginia 23188
 Phone: (757) 253-0040
 Fax: (757) 220-8994
 www.wesve.com

**PLAT OF CONDOMINIUM
 WEATHERLY AT WHITEHALL
 PHASE 17**

STONEHOUSE DISTRICT JAMES CITY COUNTY VIRGINIA

Project Contacts: JFB
 Project Number: 9048-09
 Scale: 1"=100' Date: 06/12/13
 Sheet Number
2 OF 3