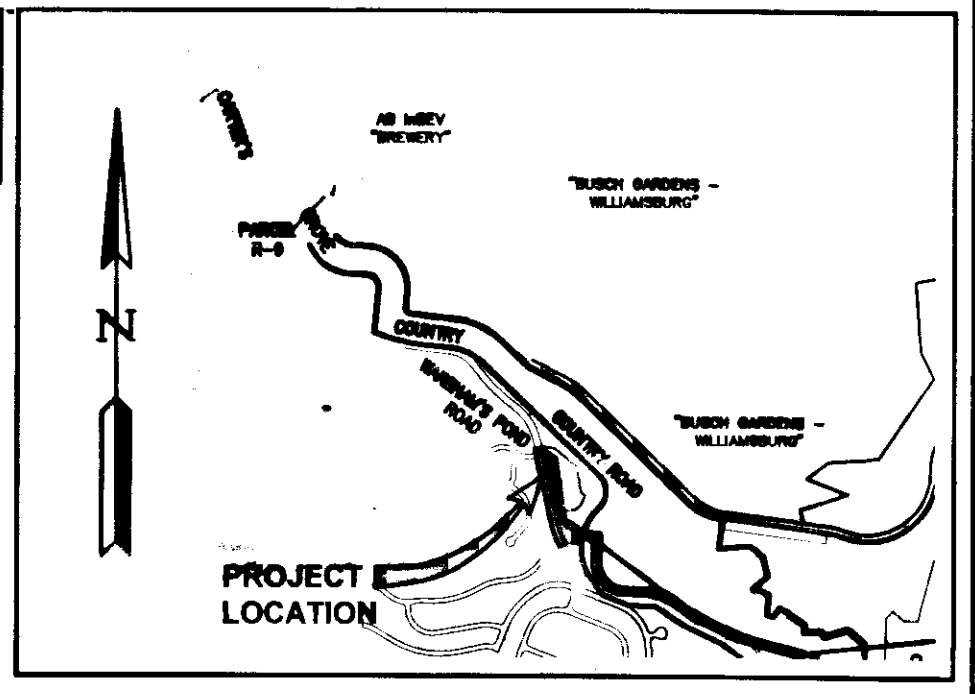
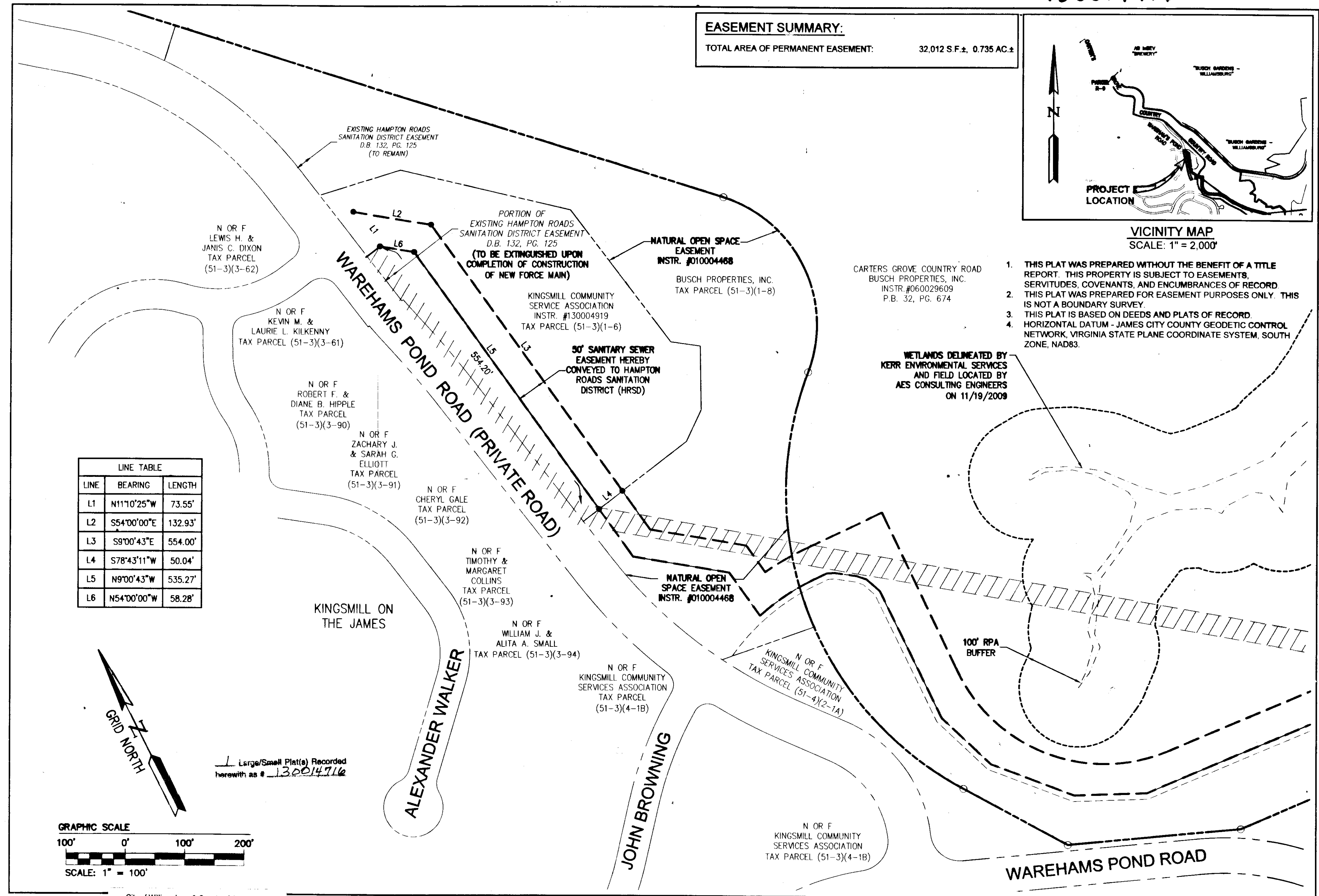


130014716

EASEMENT SUMMARY:
 TOTAL AREA OF PERMANENT EASEMENT: 32,012 S.F.±, 0.735 AC.±

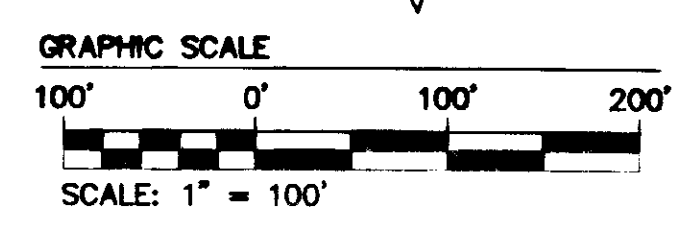
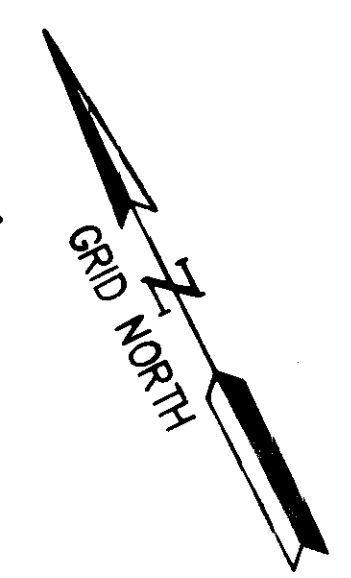


VICINITY MAP
 SCALE: 1" = 2,000'



LINE TABLE

LINE	BEARING	LENGTH
L1	N11°10'25"W	73.55'
L2	S54°00'00"E	132.93'
L3	S9°00'43"E	554.00'
L4	S78°43'11"W	50.04'
L5	N9°00'43"W	535.27'
L6	N54°00'00"W	58.28'



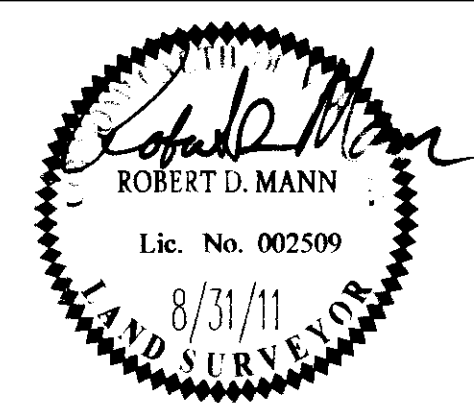
1 Large/Small Plat(s) Recorded herewith as # 130014716

1. THIS PLAT WAS PREPARED WITHOUT THE BENEFIT OF A TITLE REPORT. THIS PROPERTY IS SUBJECT TO EASEMENTS, SERVITUDES, COVENANTS, AND ENCUMBRANCES OF RECORD. THIS PLAT WAS PREPARED FOR EASEMENT PURPOSES ONLY. THIS IS NOT A BOUNDARY SURVEY.
2. THIS PLAT IS BASED ON DEEDS AND PLATS OF RECORD.
3. HORIZONTAL DATUM - JAMES CITY COUNTY GEODETIC CONTROL NETWORK, VIRGINIA STATE PLANE COORDINATE SYSTEM, SOUTH ZONE, NAD83.

WETLANDS DELINEATED BY KERR ENVIRONMENTAL SERVICES AND FIELD LOCATED BY AES CONSULTING ENGINEERS ON 11/19/2008

City of Williamsburg & County of James City Circuit Court: This PLAT was recorded on 18 June 2013 at 10:24 AM/PM, PG. Document # 130014716. Betsy B. Woolridge, Clerk. By Claudia A. Smith, Dep. Clerk.

Rev	Date	Description	Revised By
2	3/20/2013	CORRECTED NATURAL OPEN SPACE EASEMENT TITLES	RDM
1	2/5/2013	CORRECTED NATURAL OPEN SPACE EASEMENT TITLE & P.B. REFERENCE	RDM



AES
 CONSULTING ENGINEERS
 Hampton Roads | Central Virginia | Middle Peninsula
 5248 Olde Towne Road, Suite 1
 Williamsburg, Virginia 23188
 Phone: (757) 253-0040
 Fax: (757) 220-8994
 www.aesva.com

WILLIAMSBURG INTERCEPTOR FORCE MAIN CONTRACT A REPLACEMENT
 COMPOSITE PLAT OF EASEMENT TO BE ACQUIRED FROM KINGSMILL COMMUNITY SERVICE ASSOCIATION BY HAMPTON ROADS SANITATION DISTRICT
 KINGSMILL ON THE JAMES
 ROBERTS DISTRICT JAMES CITY COUNTY VIRGINIA

Project Contacts: RDM
 Project Number: 7753-28
 Scale: 1" = 100' Date: 8/31/11
 Sheet Number: 1 OF 1