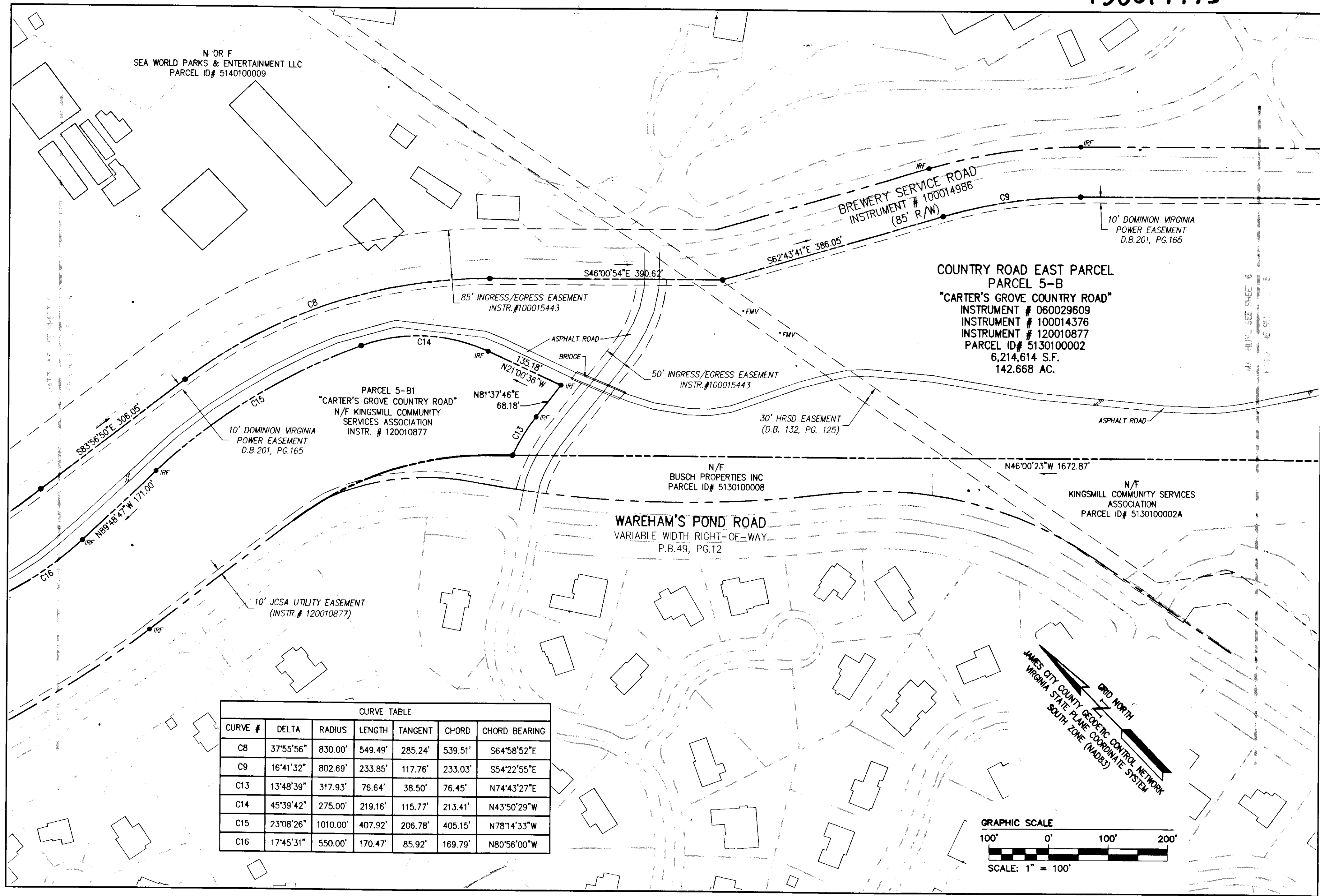
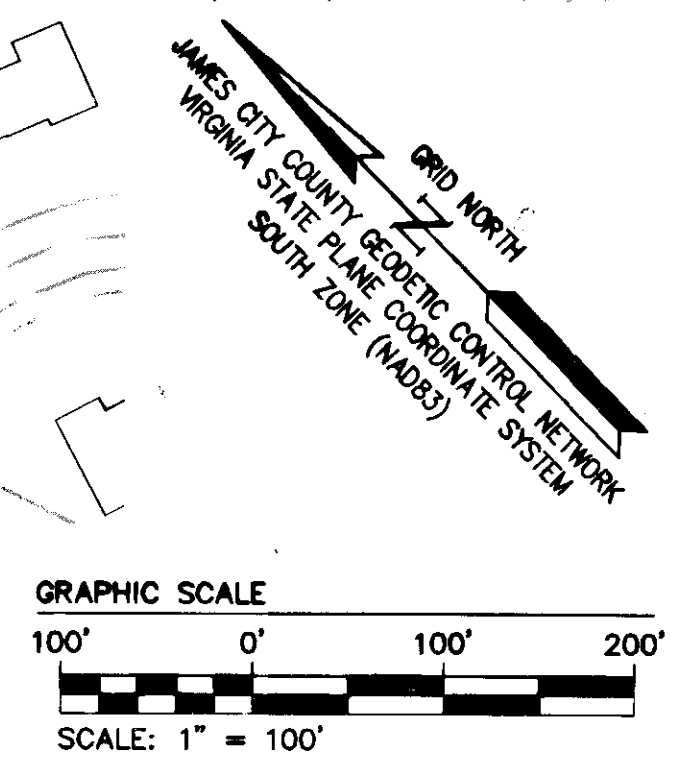


130014475

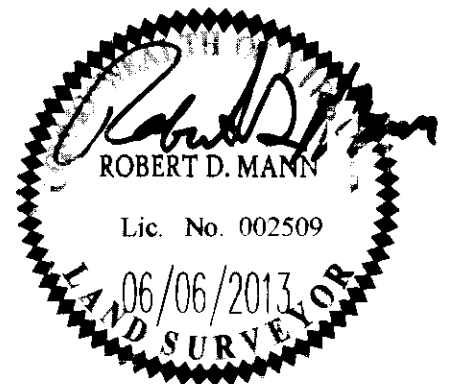


CURVE TABLE						
CURVE #	DELTA	RADIUS	LENGTH	TANGENT	CHORD	CHORD BEARING
C8	37°55'56"	830.00'	549.49'	285.24'	539.51'	S64°58'52"E
C9	16°41'32"	802.69'	233.85'	117.76'	233.03'	S54°22'55"E
C13	13°48'39"	317.93'	76.64'	38.50'	76.45'	N74°43'27"E
C14	45°39'42"	275.00'	219.16'	115.77'	213.41'	N43°50'29"W
C15	23°08'26"	1010.00'	407.92'	206.78'	405.15'	N78°14'33"W
C16	17°45'31"	550.00'	170.47'	85.92'	169.79'	N80°56'00"W



Rev	Date	Description	Revised by

City of Williamsburg & County of James City
 Circuit Court: This PLAT was recorded on June 13, 2013
 at 11:09 AM, PB PG
 Document # 130014475
 BETSY B. WOOLRIDGE, CLERK
Patrick Wavulano, Dep. Clerk



WES
 CONSULTING ENGINEERS

1317 Executive Blvd, Suite 150
 Chesapeake, Virginia 23320
 Phone: (757) 410-7436
 www.aesva.com

Hampton Roads | Central Virginia | Middle Peninsula
 8
 130014475

BOUNDARY SURVEY
 COUNTRY ROAD EAST PARCEL

PROPERTY OF
BUSCH PROPERTIES, INC.

ROBERTS DISTRICT COUNTY OF JAMES CITY VIRGINIA

Project Contacts: ROM
 Project Number: H10047
 Scale: 1"=100'
 Date: 06/06/2013
 Sheet Number:
5