

THIS SHEET PROVIDED TO PROVIDE GEOMETRY FOR CONSERVATION EASEMENT ONLY. BOUNDARY INFORMATION SHOWN ON SHEET 1.

COMPILED PLAT SHOWING **130013878** CONSERVATION EASEMENTS TO BE DEDICATED TO JAMES CITY COUNTY ON THE PROPERTY OF

### HAMPTON ROADS DEVELOPMENT, LLC

JAMESTOWN DISTRICT  
JAMES CITY COUNTY, VIRGINIA

ADPA **A.D. POTTS & ASSOCIATES, INC.**  
11524 JEFFERSON AVENUE  
NEWPORT NEWS, VIRGINIA 23601  
PHONE: (757) 595-4610

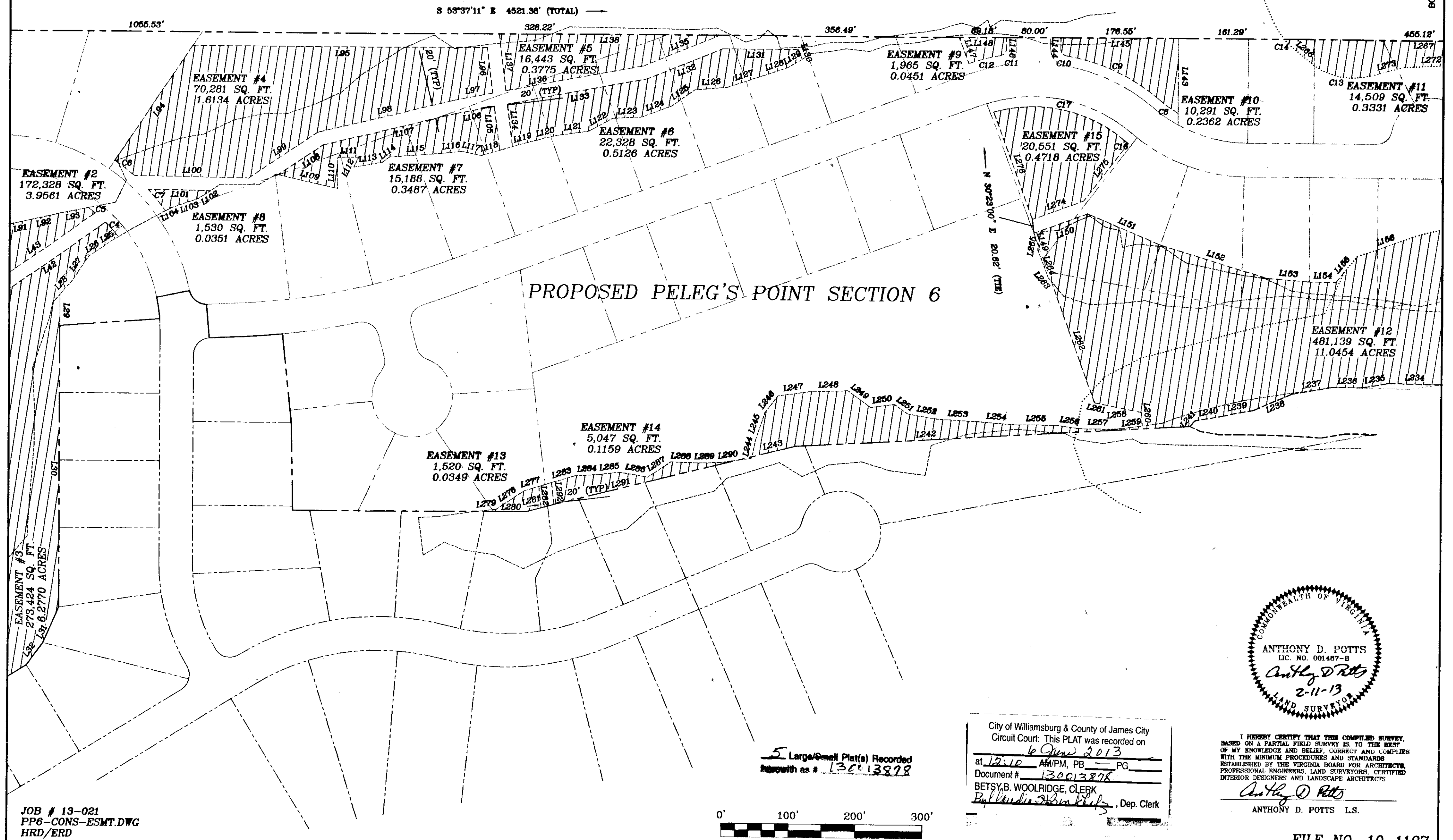
1" = 100'

FEBRUARY 11, 2013  
REV. MARCH 26, 2013

SHEET 4 OF 5

BORDER IS MATCHLINE

BORDER IS MATCHLINE

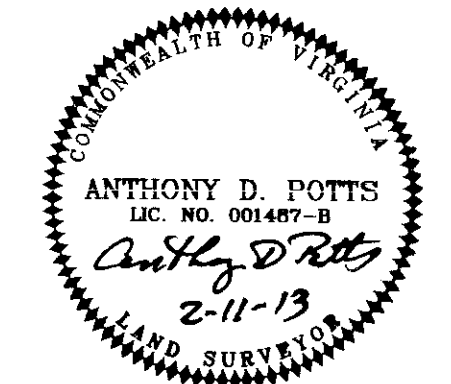


JOB # 13-021  
PP6-CONS-ESMT.DWG  
HRD/ERD

5 Large/Small Plat(s) Recorded  
Herewith as # **130013878**



City of Williamsburg & County of James City  
Circuit Court: This PLAT was recorded on  
6 June 2013  
at 12:10 AM/PM, PB PG  
Document # 130013878  
BETSY B. WOOLRIDGE, CLERK  
*Betsy Woolridge*, Dep. Clerk



I HEREBY CERTIFY THAT THIS COMPILED SURVEY, BASED ON A PARTIAL FIELD SURVEY IS TO THE BEST OF MY KNOWLEDGE AND BELIEF, CORRECT AND COMPLIES WITH THE MINIMUM PROCEDURES AND STANDARDS ESTABLISHED BY THE VIRGINIA BOARD FOR ARCHITECTURE, PROFESSIONAL ENGINEERS, LAND SURVEYORS, CERTIFIED INTERIOR DESIGNERS AND LANDSCAPE ARCHITECTS.

*Anthony D. Potts*  
ANTHONY D. POTTS, L.S.

FILE NO. 10-1197