

THIS SHEET PROVIDED TO PROVIDE GEOMETRY FOR CONSERVATION EASEMENT ONLY. BOUNDARY INFORMATION SHOWN ON SHEET 1.

COMPILED PLAT SHOWING 130013878 CONSERVATION EASEMENTS TO BE DEDICATED TO JAMES CITY COUNTY ON THE PROPERTY OF

HAMPTON ROADS DEVELOPMENT, LLC

JAMESTOWN DISTRICT
JAMES CITY COUNTY, VIRGINIA

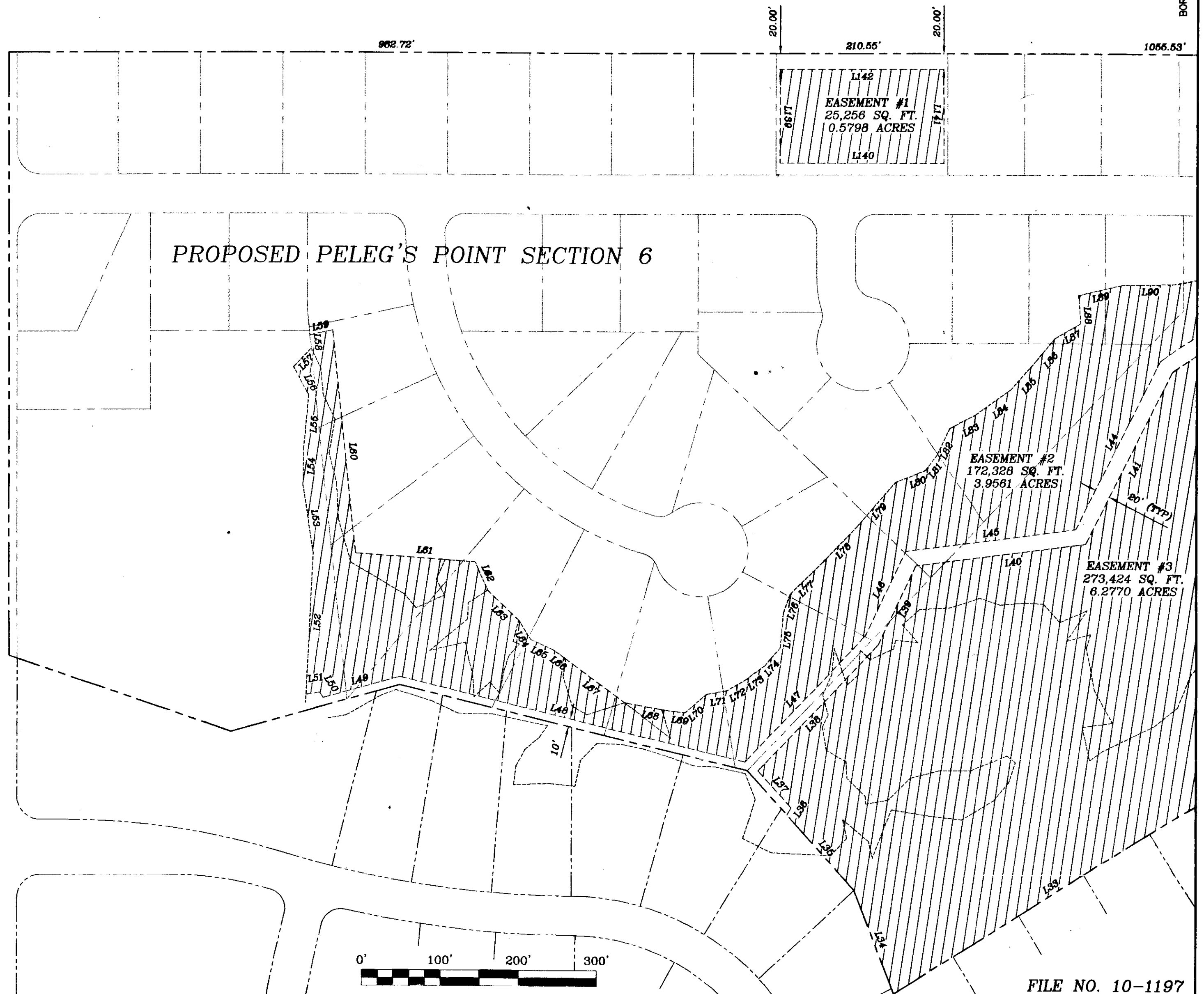
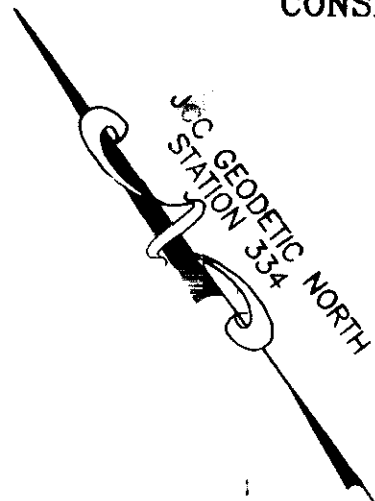
ADPA A.D. POTTS & ASSOCIATES, INC.
11524 JEFFERSON AVENUE
NEWPORT NEWS, VIRGINIA 23601
PHONE: (757) 595-4610

1" = 100'

FEBRUARY 11, 2013
REV. MARCH 25, 2013

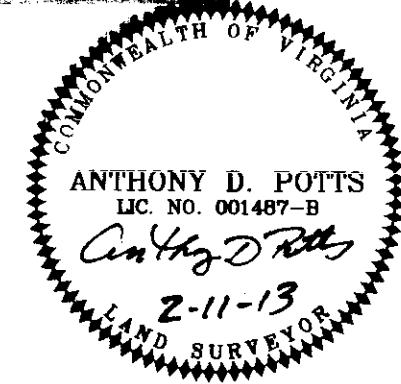
SHEET 3 OF 5

BORDER IS MATCH-LINE



NECK-O-LAND ROAD
ROUTE 682
R/W VARIES

City of Williamsburg & County of James City
Circuit Court: This PLAT was recorded on
16 June 2013
at 12:12 AM/PM, PB — PG —
Document # 130013878
BETSY B. WOOLRIDGE, CLERK
By B. Woolridge, Dep. Clerk



5 Large/Small Plat(s) Recorded
herewith as # 130013878

I HEREBY CERTIFY THAT THIS COMPILED SURVEY, BASED ON A PARTIAL FIELD SURVEY IS TO THE BEST OF MY KNOWLEDGE AND BELIEF, CORRECT AND COMPLIES WITH THE MINIMUM PROCEDURES AND STANDARDS ESTABLISHED BY THE VIRGINIA BOARD FOR ARCHITECTS, PROFESSIONAL ENGINEERS, LAND SURVEYORS, CERTIFIED INTERIOR DESIGNERS AND LANDSCAPE ARCHITECTS.

Anthony D. Potts
ANTHONY D. POTTS L.S.

JOB # 13-021
PP6-CONS-ESMT.DWG
HRD/ERD



FILE NO. 10-1197