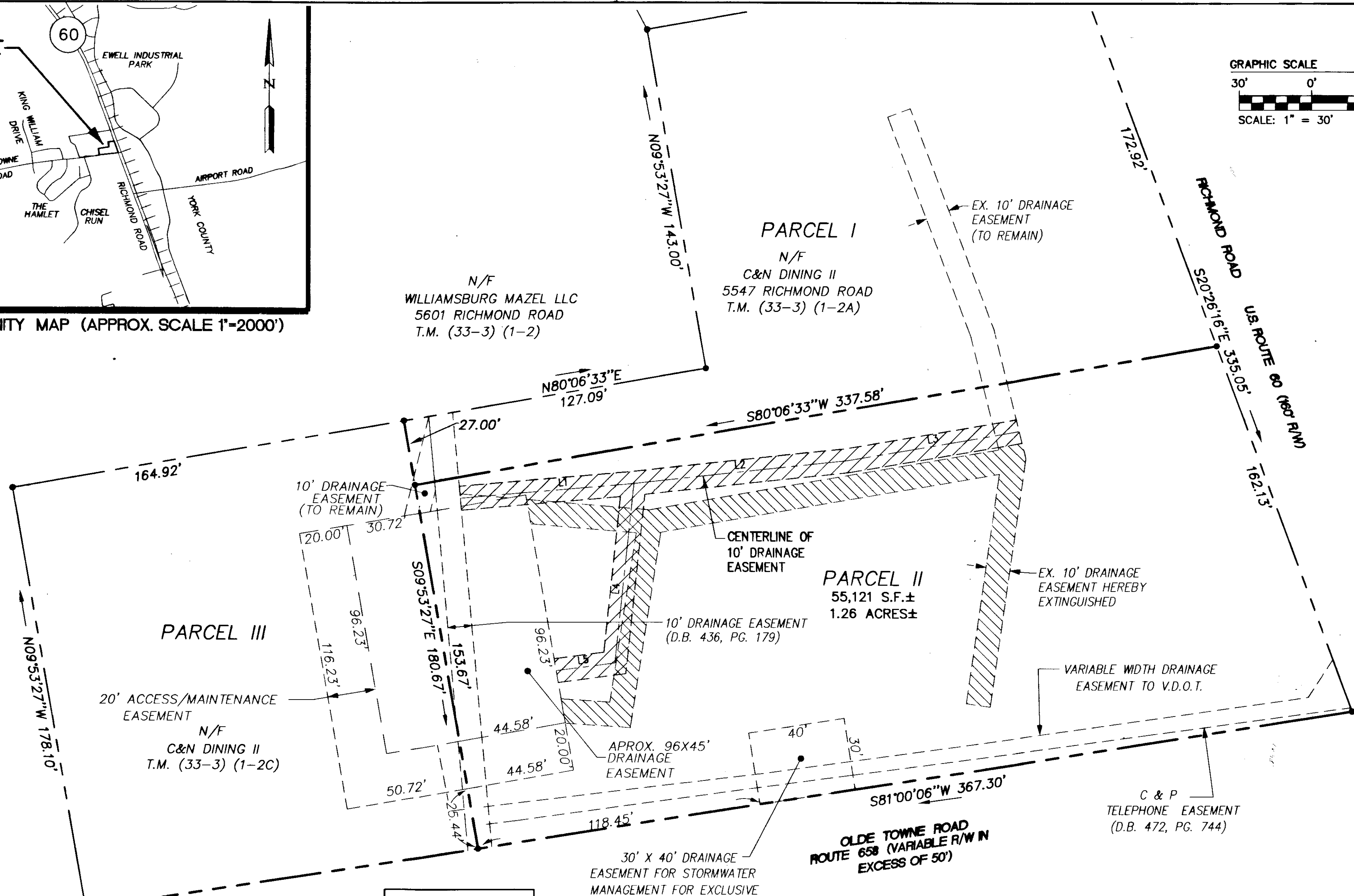
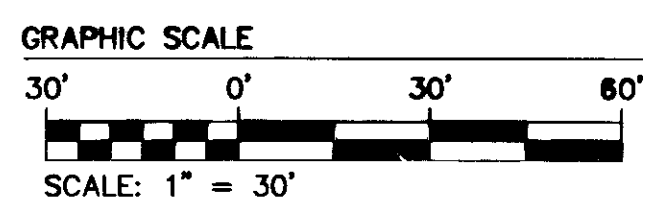
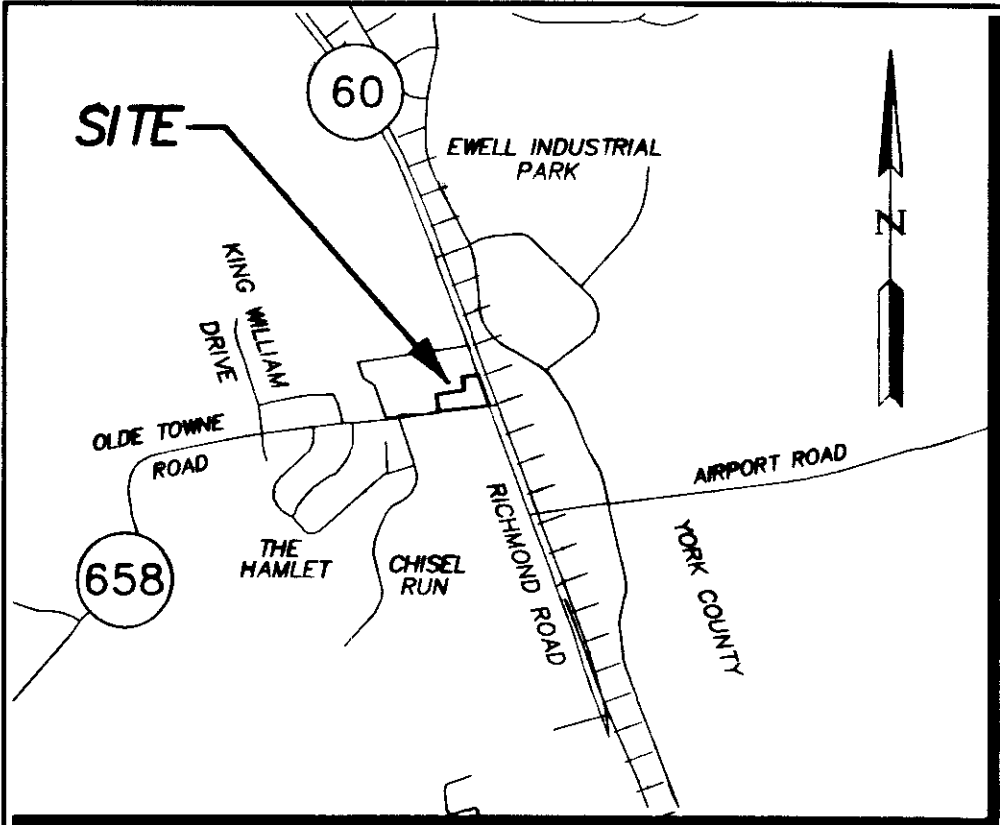


130012019



LINE TABLE		
LINE	BEARING	LENGTH
L1	N85°10'26"E	72.29'
L2	N83°48'59"E	89.07'
L3	N80°06'33"E	72.17'
L4	S5°58'23"W	75.11'
L5	S82°38'34"W	24.31'

AREA OF EASEMENT TO BE EXTINGUISHED= ±0.099 AC; ±4,332 SF

AREA OF EASEMENT HEREBY DEDICATED= ±0.075 AC; ±3,284 SF

1. Large/Small Plans Recorded herewith as # 130012019

Rev.	Date	Description	Revised By

City of Williamsburg & County of James City
 Circuit Court: This PLAT was recorded on
May 14, 2013
 at 9:38 AM/PM PB PG
 Document # 130012019
 BETSY B. WOOLRIDGE, CLERK
[Signature], Dep. Clerk

AES
 CONSULTING ENGINEERS
 Hampton Roads | Central Virginia | Middle Peninsula

5248 Olde Towne Road, Suite 1
 Williamsburg, Virginia 23188
 Phone: (757) 253-0040
 Fax: (757) 220-8994
 www.aesva.com

**DRAINAGE EASEMENT EXHIBIT
 LOCATED ON PARCEL II
 JW CROSSING @ EWELL STATION**

COUNTY OF JAMES CITY VIRGINIA

Project Contacts: JAG	
Project Number: 8459-06	
Scale: 1"=30'	Date: 5-7-13
Sheet Number	
1	