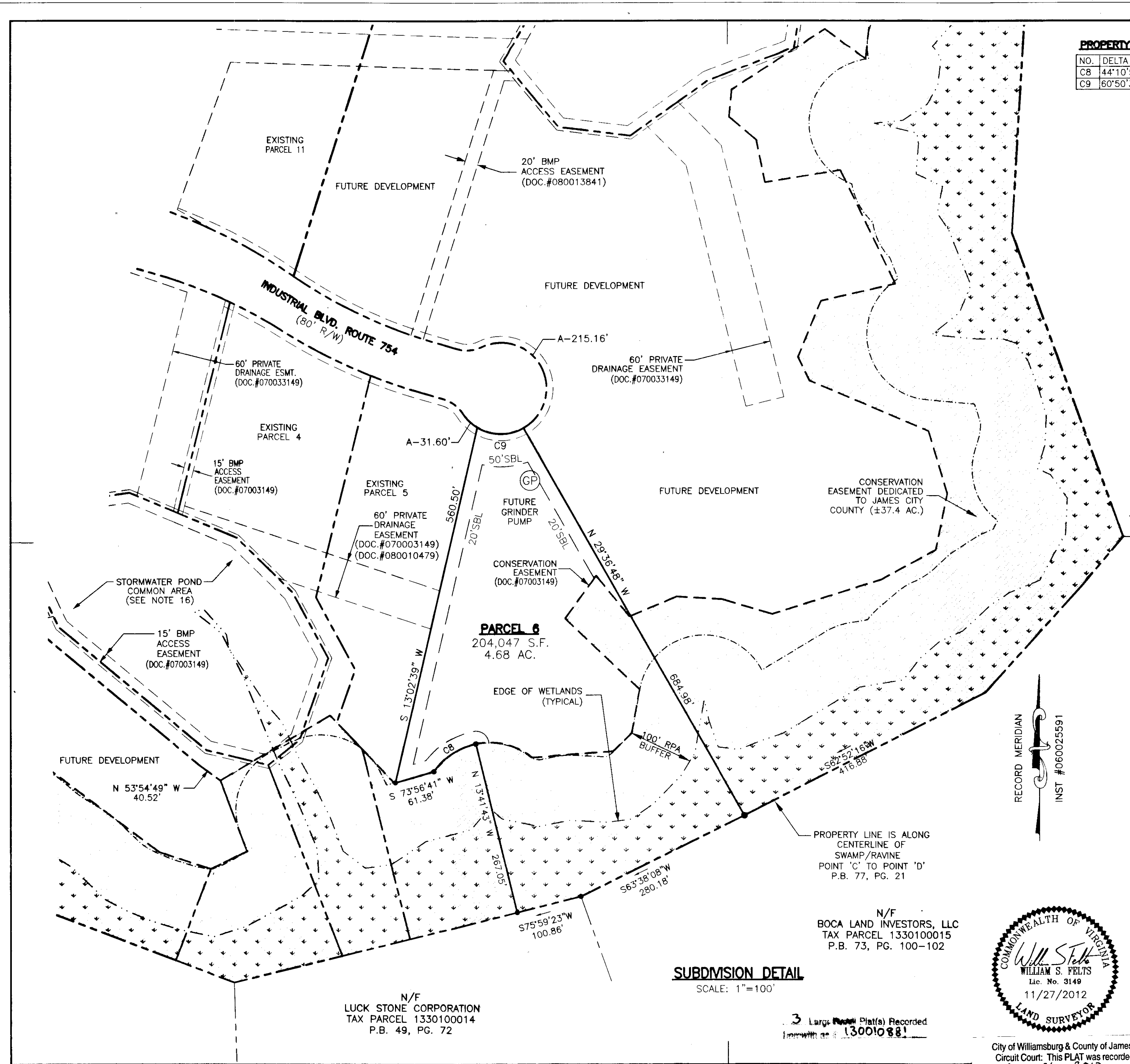
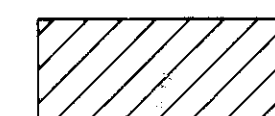


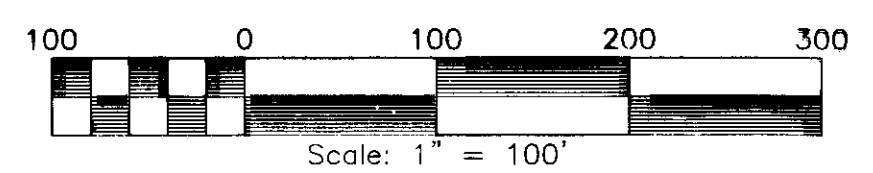
130010881

PROPERTY CURVE TABLE

NO.	DELTA	CHORD DIRECTION	TANGENT	RADIUS	ARC	CHORD
C8	44°10'54"	S 56°18'46" W	41.99	103.46'	79.78'	77.82'
C9	60°50'32"	S 89°11'32" E	41.10	70.00'	74.33'	70.89'



 DENOTES JAMES CITY COUNTY CONSERVATION EASEMENT (DOC.#070033149) (±37.4 AC. TOTAL)



PLAT SHOWING SUBDIVISION OF PARCEL 6
 LOCATED AT
JACOB'S INDUSTRIAL CENTER
 LOCATED IN THE
 STONEHOUSE MAGISTERIAL DISTRICT
 JAMES CITY COUNTY, VIRGINIA

DATE: 11/27/2012 SCALE 1" = 100' JOB# 12-421

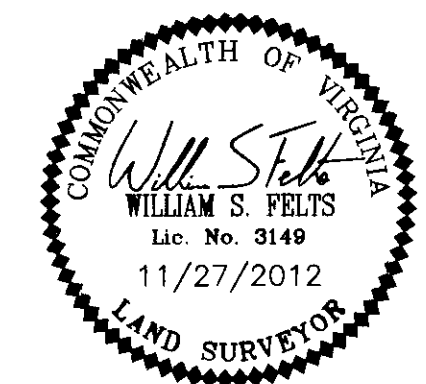
LandTech Resources, Inc.
 Surveying • Engineering • GPS

205-E Bulifants Boulevard, Williamsburg, VA 23188
 Phone: (757) 565-1677 Fax: (757) 565-0782
 web: landtechresources.com

SHEET 3 OF 3

SUBDIVISION DETAIL
 SCALE: 1"=100'

3 Large Plats Recorded
 with as 130010881



City of Williamsburg & County of James City
 Circuit Court: This PLAT was recorded on
 April 26, 2013
 at 12:25 PM, PG. PG.
 Document # 130010881
 BETSY B. WOOLRIDGE, CLERK
 Betsy Woolridge, Dep. Clerk

N/F
 LUCK STONE CORPORATION
 TAX PARCEL 1330100014
 P.B. 49, PG. 72

N/F
 BOCA LAND INVESTORS, LLC
 TAX PARCEL 1330100015
 P.B. 73, PG. 100-102

PARCEL 6
 204,047 S.F.
 4.68 AC.