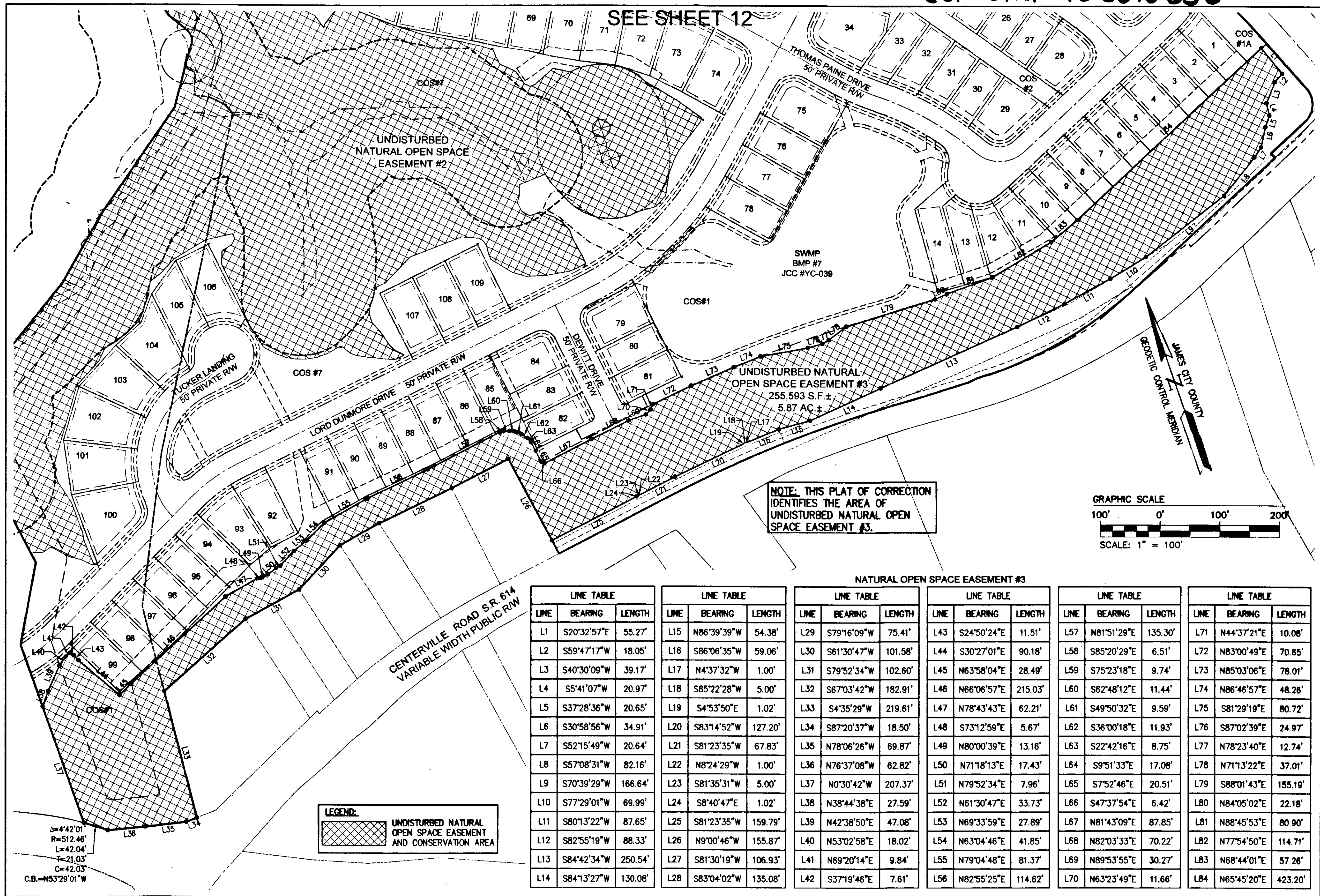
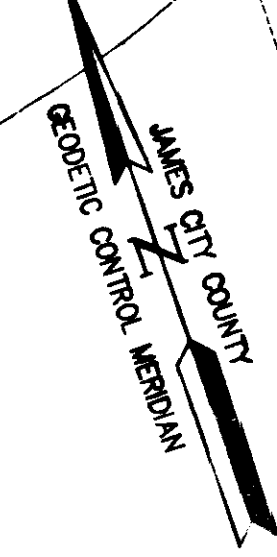
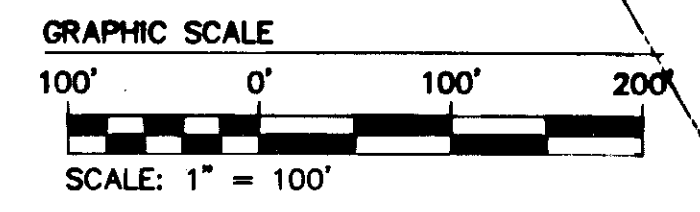


Corrected 130010358



SEE SHEET 12

NOTE: THIS PLAT OF CORRECTION IDENTIFIES THE AREA OF UNDISTURBED NATURAL OPEN SPACE EASEMENT #3.

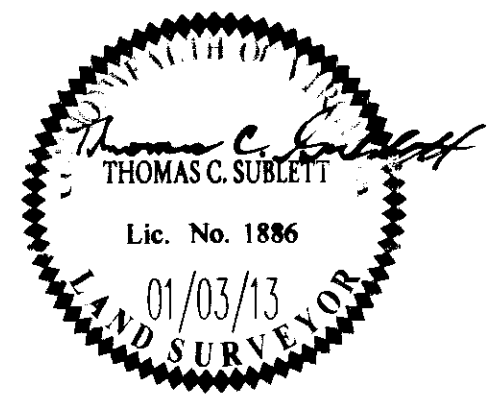


LEGEND:
 UNDISTURBED NATURAL OPEN SPACE EASEMENT AND CONSERVATION AREA

Δ=4'42.01'
 R=512.46'
 L=42.04'
 T=21.03'
 C=42.03'
 C.B.=N53°29'01"W

LINE TABLE			LINE TABLE			LINE TABLE			LINE TABLE			LINE TABLE			LINE TABLE		
LINE	BEARING	LENGTH	LINE	BEARING	LENGTH	LINE	BEARING	LENGTH	LINE	BEARING	LENGTH	LINE	BEARING	LENGTH	LINE	BEARING	LENGTH
L1	S20°32'57"E	55.27'	L15	N86°39'39"W	54.38'	L29	S79°16'09"W	75.41'	L43	S24°50'24"E	11.51'	L57	N81°51'29"E	135.30'	L71	N44°37'21"E	10.08'
L2	S59°47'17"W	18.05'	L16	S86°06'35"W	59.06'	L30	S61°30'47"W	101.58'	L44	S30°27'01"E	90.18'	L58	S85°20'29"E	6.51'	L72	N83°00'49"E	70.85'
L3	S40°30'09"W	39.17'	L17	N4°37'32"W	1.00'	L31	S79°52'34"W	102.60'	L45	N63°58'04"E	28.49'	L59	S75°23'18"E	9.74'	L73	N85°03'06"E	78.01'
L4	S5°41'07"W	20.97'	L18	S85°22'28"W	5.00'	L32	S67°03'42"W	182.91'	L46	N66°06'57"E	215.03'	L60	S62°48'12"E	11.44'	L74	N86°46'57"E	48.26'
L5	S37°28'36"W	20.65'	L19	S4°53'50"E	1.02'	L33	S4°35'29"W	219.61'	L47	N78°43'43"E	62.21'	L61	S49°50'32"E	9.59'	L75	S81°29'19"E	80.72'
L6	S30°58'56"W	34.91'	L20	S83°14'52"W	127.20'	L34	S87°20'37"W	18.50'	L48	S73°12'59"E	5.67'	L62	S36°00'18"E	11.93'	L76	S87°02'39"E	24.97'
L7	S52°15'49"W	20.64'	L21	S81°23'35"W	67.83'	L35	N78°06'26"W	69.87'	L49	N80°00'39"E	13.16'	L63	S22°42'16"E	8.75'	L77	N78°23'40"E	12.74'
L8	S57°08'31"W	82.16'	L22	N8°24'29"W	1.00'	L36	N76°37'08"W	62.82'	L50	N71°18'13"E	17.43'	L64	S9°51'33"E	17.08'	L78	N71°13'22"E	37.01'
L9	S70°39'29"W	166.64'	L23	S81°35'31"W	5.00'	L37	N0°30'42"W	207.37'	L51	N79°52'34"E	7.96'	L65	S7°52'46"E	20.51'	L79	S88°01'43"E	155.19'
L10	S77°29'01"W	69.99'	L24	S8°40'47"E	1.02'	L38	N38°44'38"E	27.59'	L52	N61°30'47"E	33.73'	L66	S47°37'54"E	6.42'	L80	N84°05'02"E	22.18'
L11	S80°13'22"W	87.65'	L25	S81°23'35"W	159.79'	L39	N42°38'50"E	47.08'	L53	N69°33'59"E	27.89'	L67	N81°43'09"E	87.85'	L81	N88°45'53"E	80.90'
L12	S82°55'19"W	88.33'	L26	N9°00'46"W	155.87'	L40	N53°02'58"E	18.02'	L54	N63°04'46"E	41.85'	L68	N82°03'33"E	70.22'	L82	N77°54'50"E	114.71'
L13	S84°42'34"W	250.54'	L27	S81°30'19"W	106.93'	L41	N69°20'14"E	9.84'	L55	N79°04'48"E	81.37'	L69	N89°53'55"E	30.27'	L83	N68°44'01"E	57.26'
L14	S84°13'27"W	130.08'	L28	S83°04'02"W	135.08'	L42	S37°19'46"E	7.61'	L56	N82°55'25"E	114.62'	L70	N63°23'49"E	11.66'	L84	N65°45'20"E	423.20'

City of Williamsburg & County of James City Circuit Court - This PLAT was recorded on <u>17 April 2013</u> at <u>3:29</u> AM/PM, PG. <u>130010358</u> Document # <u>130010358</u> BETSY B. WOOLRIDGE, CLERK <u>B. Medina</u> , Dep. Clerk			
2	01/03/13	PLAT OF CORRECTION FOR UNDISTURBED NATURAL OPEN SPACE EASEMENT #3	TCS
1	07/24/12	REVISED PER COUNTY COMMENTS	RMS
Rev.	Date	Description	Revised By



Large/Small Plat(s) Recorded herewith as # 130010358

AES
 CONSULTING ENGINEERS
 Hampton Roads | Central Virginia | Middle Peninsula

5248 Old Towne Road, Suite 1
 Williamsburg, Virginia 23188
 Phone: (757) 253-0040
 Fax: (757) 220-8994
 www.aesva.com

PLAT OF CORRECTION
 PLAT OF SUBDIVISION
COLONIAL HERITAGE
 PHASE IV, SECTION 2A
 LOTS 1 THRU 109 AND
 COMMON OPEN SPACES #1 THRU #7
 PREPARED FOR COLONIAL HERITAGE LLC

STONEHOUSE DISTRICT JAMES CITY COUNTY VIRGINIA

Project Contacts:	TCS
Project Number:	8861-42A
Scale:	1"=200'
Date:	08/22/12
Sheet Number	13 of 13