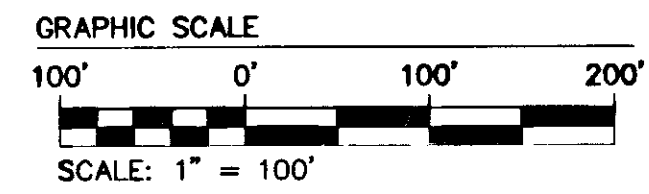
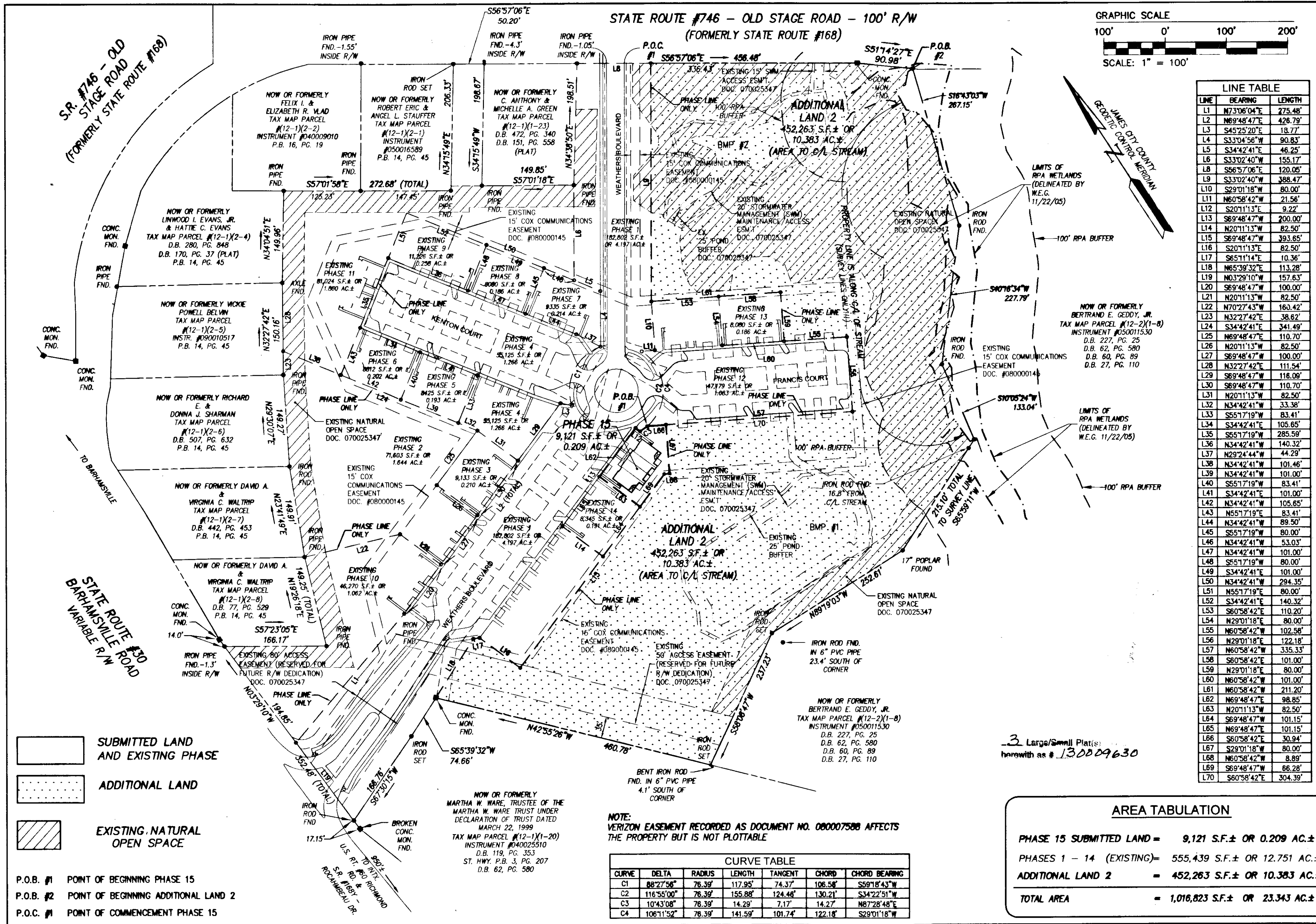


130009630



LINE	BEARING	LENGTH
L1	N73°06'04\"	275.48'
L2	N89°48'47\"	428.79'
L3	S45°25'20\"	18.77'
L4	S33°04'56\"	90.83'
L5	S34°42'41\"	46.25'
L6	S33°02'40\"	155.17'
L8	S56°57'06\"	120.05'
L9	S33°02'40\"	388.47'
L10	S29°01'18\"	80.00'
L11	N60°58'42\"	21.56'
L12	S20°11'13\"	9.22'
L13	S69°48'47\"	200.00'
L14	N20°11'13\"	82.50'
L15	S69°48'47\"	393.65'
L16	S20°11'13\"	82.50'
L17	S65°11'14\"	10.36'
L18	N65°39'32\"	113.28'
L19	N03°29'10\"	157.63'
L20	S69°48'47\"	100.00'
L21	N20°11'13\"	82.50'
L22	N70°27'43\"	160.42'
L23	N32°27'42\"	38.62'
L24	S34°42'41\"	341.49'
L25	S69°48'47\"	110.70'
L26	N20°11'13\"	82.50'
L27	S69°48'47\"	100.00'
L28	N32°27'42\"	111.54'
L29	S69°48'47\"	116.09'
L30	S69°48'47\"	110.70'
L31	N20°11'13\"	82.50'
L32	N34°42'41\"	33.38'
L33	S55°17'19\"	83.41'
L34	S34°42'41\"	105.65'
L35	S55°17'19\"	285.59'
L36	N34°42'41\"	140.32'
L37	N29°24'44\"	44.29'
L38	N34°42'41\"	101.46'
L39	N34°42'41\"	101.00'
L40	S55°17'19\"	83.41'
L41	S34°42'41\"	101.00'
L42	N34°42'41\"	105.85'
L43	S55°17'19\"	83.41'
L44	N34°42'41\"	89.50'
L45	S55°17'19\"	80.00'
L46	N34°42'41\"	53.03'
L47	N34°42'41\"	101.00'
L48	S55°17'19\"	80.00'
L49	S34°42'41\"	101.00'
L50	N34°42'41\"	294.35'
L51	S55°17'19\"	80.00'
L52	S34°42'41\"	140.32'
L53	S60°58'42\"	110.20'
L54	N29°01'18\"	80.00'
L55	N60°58'42\"	102.58'
L56	N29°01'18\"	122.18'
L57	N60°58'42\"	335.33'
L58	S60°58'42\"	101.00'
L59	N29°01'18\"	80.00'
L60	N60°58'42\"	101.00'
L61	N60°58'42\"	211.20'
L62	N69°48'47\"	98.85'
L63	N20°11'13\"	82.50'
L64	S69°48'47\"	101.15'
L65	N69°48'47\"	101.15'
L66	S60°58'42\"	30.94'
L67	S29°01'18\"	80.00'
L68	N60°58'42\"	8.89'
L69	S69°48'47\"	66.28'
L70	S60°58'42\"	304.39'

- SUBMITTED LAND AND EXISTING PHASE
- ADDITIONAL LAND
- EXISTING NATURAL OPEN SPACE

P.O.B. #1 POINT OF BEGINNING PHASE 15
 P.O.B. #2 POINT OF BEGINNING ADDITIONAL LAND 2
 P.O.C. #1 POINT OF COMMENCEMENT PHASE 15

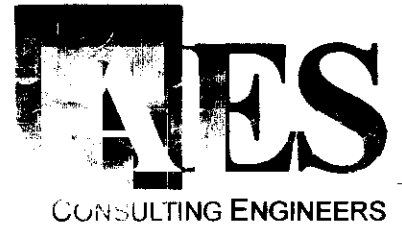
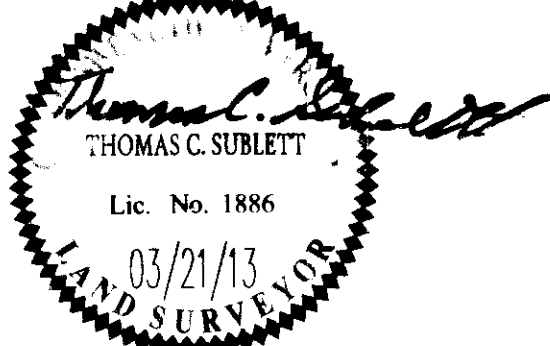
NOTE: VERIZON EASEMENT RECORDED AS DOCUMENT NO. 080007588 AFFECTS THE PROPERTY BUT IS NOT PLOTTABLE

CURVE	DELTA	RADIUS	LENGTH	TANGENT	CHORD	CHORD BEARING
C1	88°27'56\"	76.39'	117.95'	74.37'	106.58'	S59°18'43\"
C2	116°55'00\"	76.39'	155.88'	124.46'	130.21'	S34°22'51\"
C3	10°43'08\"	76.39'	14.29'	7.17'	14.27'	N67°28'48\"
C4	106°11'52\"	76.39'	141.59'	101.74'	122.18'	S29°01'18\"

3 Large/Small Plats herewith as # 130009630

AREA TABULATION	
PHASE 15 SUBMITTED LAND =	9,121 S.F. ± OR 0.209 AC. ±
PHASES 1 - 14 (EXISTING) =	555,439 S.F. ± OR 12.751 AC. ±
ADDITIONAL LAND 2 =	452,263 S.F. ± OR 10.383 AC. ±
TOTAL AREA	1,016,823 S.F. ± OR 23.343 AC. ±

City of Williamsburg & County of James City
 Circuit Court: This PLAT was recorded on
 10 April 2013
 at 12:30 AM/PM, PG. _____
 Document # 130009630
 BETSY B. WOOLRIDGE, CLERK
 By *[Signature]*, Dep. Clerk



5248 Okde Towne Road, Suite 1
 Williamsburg, Virginia 23188
 Phone: (757) 263-0040
 Fax: (757) 220-8994
 www.nesva.com

**PLAT OF CONDOMINIUM
 WEATHERLY AT WHITEHALL
 PHASE 15**

STONEHOUSE DISTRICT JAMES CITY COUNTY VIRGINIA

Project Contacts: JFS
 Project Number: 9048-08
 Scale: 1"=100' Date: 03/21/13
 Sheet Number
2 OF 3