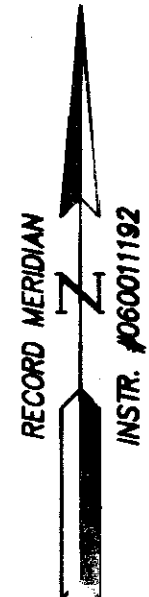
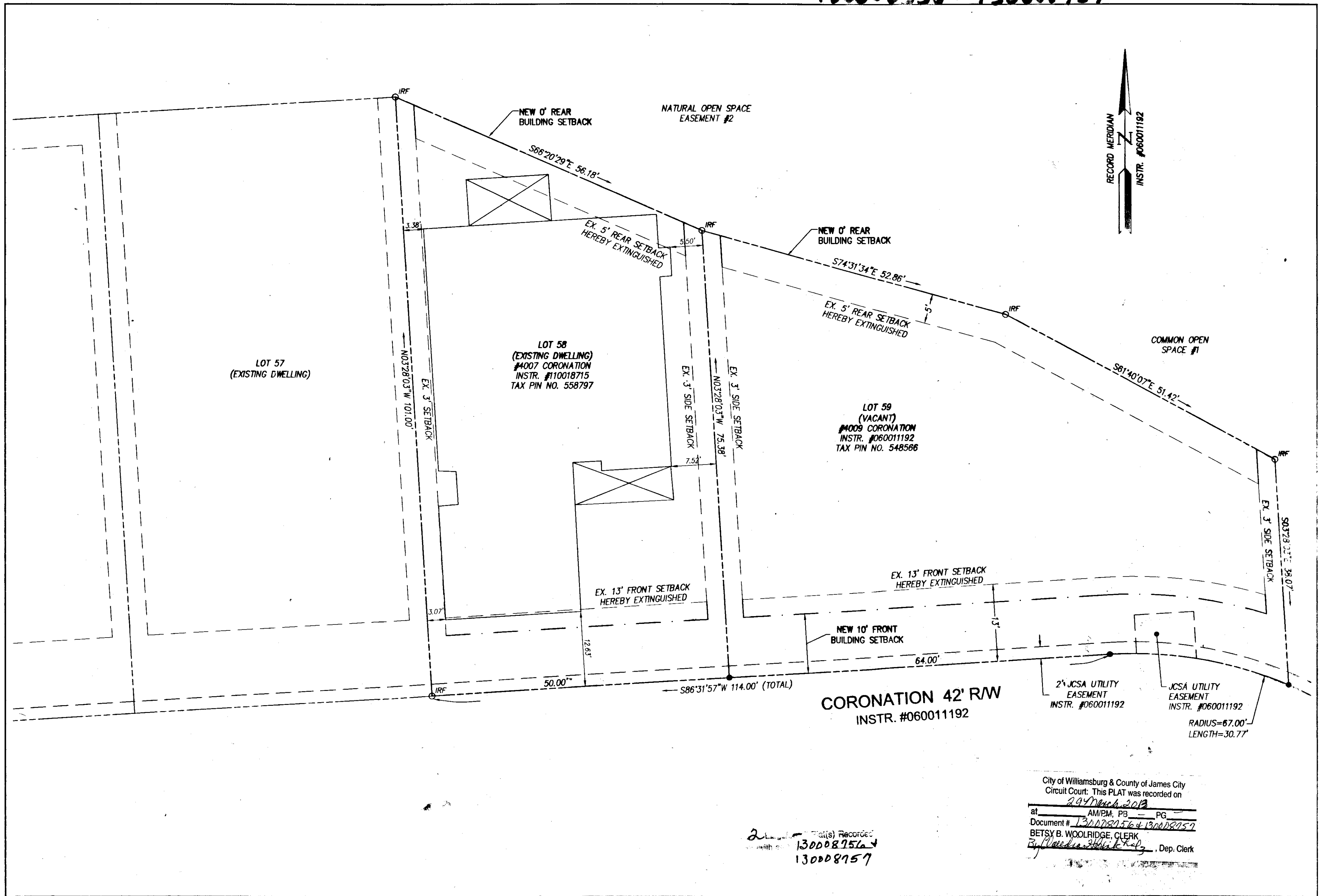


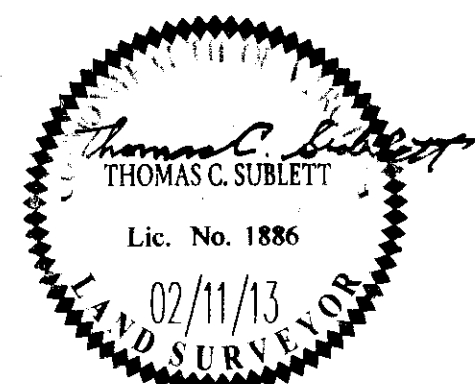
130008956 • 130008757



City of Williamsburg & County of James City
Circuit Court: This PLAT was recorded on
24 March 2013
at _____ AM/PM, PG _____ PG _____
Document # 130008956 & 130008757
BETSY B. WOOLRIDGE, CLERK
By [Signature], Dep. Clerk

2 Plat(s) Recorded
with # 130008956 & 130008757

Rev.	Date	Description	Revised By



AES
CONSULTING ENGINEERS
Hampton Roads | Central Virginia | Middle Peninsula

5248 Olde Towne Road, Suite 1
Williamsburg, Virginia 23188
Phone: (757) 253-0040
Fax: (757) 220-8994
www.aesva.com

PLAT SHOWING BUILDING SETBACK ADJUSTMENTS
THE SETTLEMENT AT POWHATAN CREEK
PHASE I
LOTS 58 AND 59
JCC #S-0001-2013

BERKELEY DISTRICT | JAMES CITY COUNTY | VIRGINIA

Project Contacts: HWP/TCS
Project Number: 9254-02
Scale: 1"=10'
Date: 02-11-13
Sheet Number: **2 of 2**