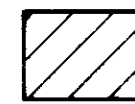
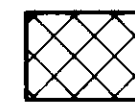

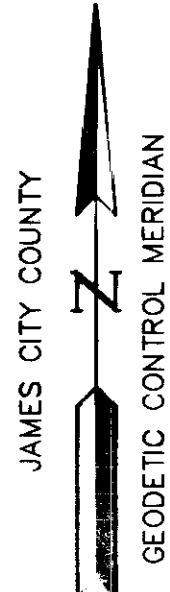


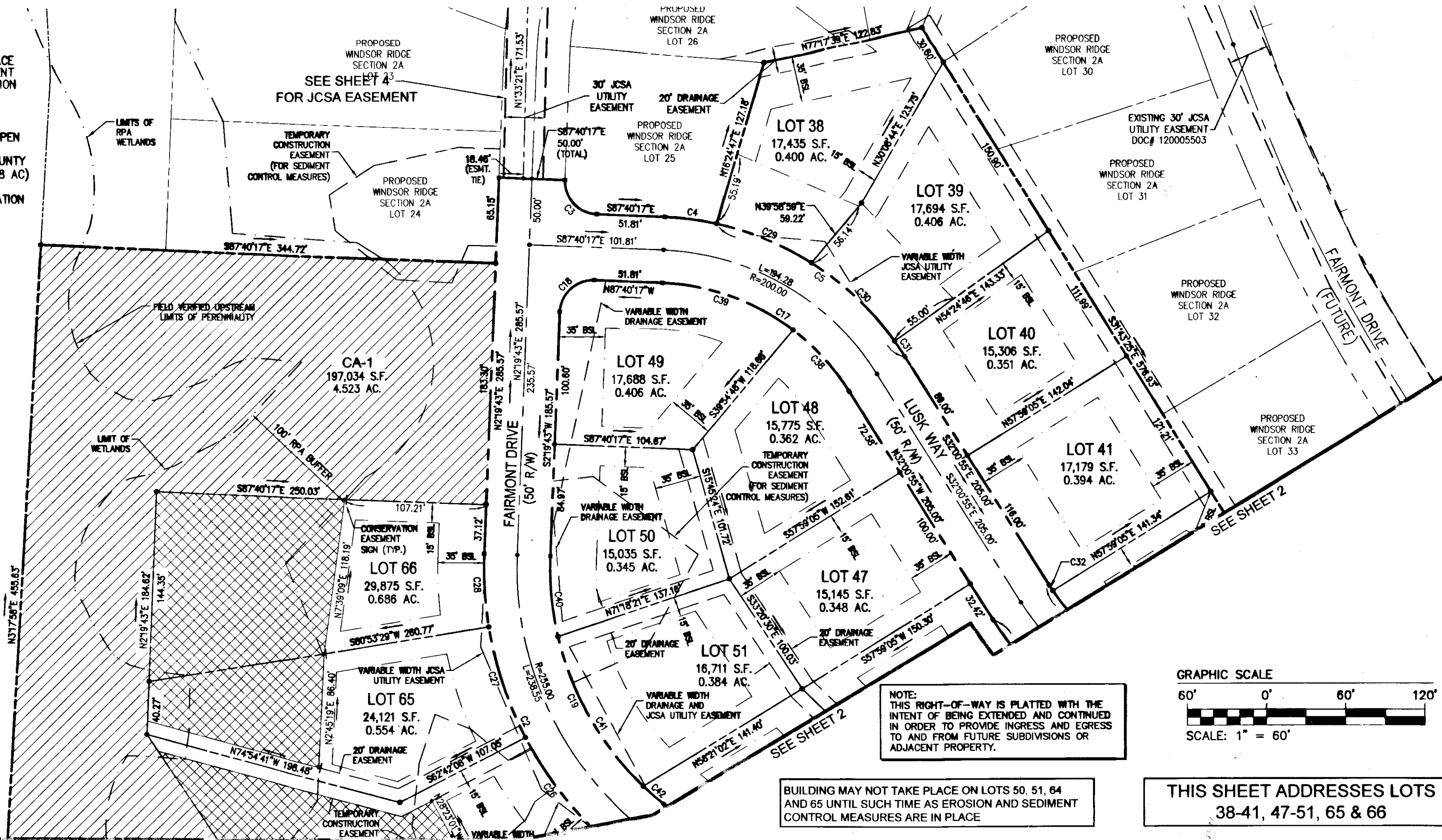
130008586

LEGEND:

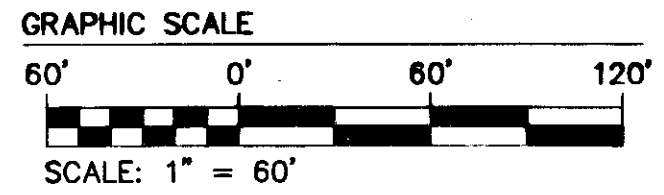
-  AREA OF NATURAL OPEN SPACE TO BE DEDICATED BY EASEMENT TO JAMES CITY COUNTY SECTION 2B (197,033 S.F.; 4.52 AC)
-  AREA OF PRIVATE NATURAL OPEN SPACE TO BE DEDICATED BY EASEMENT TO JAMES CITY COUNTY SECTION 2B (129,869 SF; 2.98 AC)
-  NOTES POSITION OF CONVERSATION EASEMENT SIGN



N/F
GARNET JACOBS
INDUSTRIAL REAL ESTATE
190 INDUSTRIAL BLVD.
PARCEL ID 1240100013
DOC. #120013378
ZONED M2
(GENERAL INDUSTRIAL)



NOTE:
THIS RIGHT-OF-WAY IS PLATTED WITH THE INTENT OF BEING EXTENDED AND CONTINUED IN ORDER TO PROVIDE INGRESS AND EGRESS TO AND FROM FUTURE SUBDIVISIONS OR ADJACENT PROPERTY.



BUILDING MAY NOT TAKE PLACE ON LOTS 50, 51, 64 AND 65 UNTIL SUCH TIME AS EROSION AND SEDIMENT CONTROL MEASURES ARE IN PLACE

THIS SHEET ADDRESSES LOTS 38-41, 47-51, 65 & 66

R/W CURVE TABLE						
CURVE #	DELTA	RADIUS	LENGTH	TANGENT	CHORD	CHORD BEARING
C1	41°07'19"	225.00'	161.48'	84.40'	158.04'	N30°42'37"W
C2	53°35'59"	280.00'	261.94'	141.44'	252.48'	N24°28'17"W
C3	90°00'00"	25.00'	39.27'	25.00'	35.36'	S42°40'17"E
C4	10°04'12"	225.00'	39.55'	19.82'	38.49'	S82°38'11"E
C5	45°35'10"	225.00'	179.02'	94.55'	174.33'	N54°48'30"W
C6	80°02'27"	170.00'	237.48'	142.75'	218.84'	S72°02'09"E
C7	5°44'32"	170.00'	17.05'	8.53'	17.05'	N65°04'12"E
C8	96°58'44"	35.00'	56.24'	39.55'	52.42'	N13°42'24"E
C9	21°42'26"	350.00'	13.89'	6.84'	13.69'	N35°54'11"W
C10	41°01'18"	400.00'	29.12'	14.57'	28.12'	S34°56'15"E
C11	84°57'06"	35.00'	51.89'	32.04'	47.27'	S75°19'40"E
C12	79°10'16"	35.00'	48.36'	28.94'	44.81'	S22°36'38"W
C13	2°48'15"	400.00'	19.56'	9.79'	19.56'	N15°34'22"W

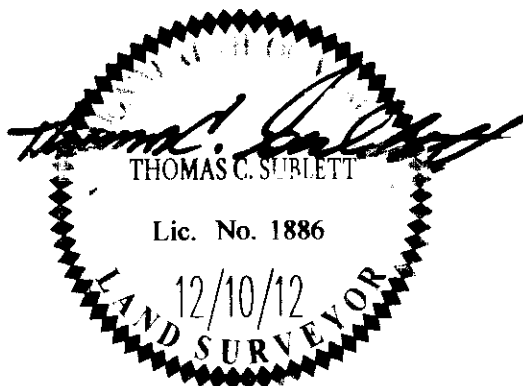
R/W CURVE TABLE						
CURVE #	DELTA	RADIUS	LENGTH	TANGENT	CHORD	CHORD BEARING
C14	103°37'59"	35.00'	63.31'	44.50'	55.02'	N65°59'14"W
C15	2°58'17"	220.00'	11.47'	5.74'	11.47'	S63°41'25"W
C16	82°48'02"	220.00'	317.93'	193.96'	290.96'	S73°24'56"E
C17	55°39'22"	175.00'	169.99'	92.38'	163.39'	N59°50'36"W
C18	90°00'00"	25.00'	39.27'	25.00'	35.36'	S47°19'43"W
C19	53°35'59"	230.00'	215.16'	116.16'	207.40'	S24°28'17"E
C20	41°07'19"	275.00'	197.37'	103.15'	193.16'	S30°42'37"E
C21	1°54'56"	190.00'	6.36'	3.18'	6.35'	S11°06'27"E
C22	1°58'27"	465.00'	16.02'	8.01'	16.02'	S7°11'27"E
C23	25°00'00"	350.00'	152.72'	77.56'	151.51'	S18°42'14"E

LOT CURVE TABLE						
CURVE #	DELTA	RADIUS	LENGTH	TANGENT	CHORD	CHORD BEARING
C24	9°39'43"	240.00'	40.47'	20.28'	40.42'	S14°58'48"E
C25	5°47'04"	280.00'	28.27'	14.15'	28.26'	S48°22'45"E
C26	18°11'21"	280.00'	88.89'	44.82'	88.52'	S36°23'32"E
C27	18°11'21"	280.00'	88.89'	44.82'	88.52'	S18°12'12"E
C28	11°26'14"	280.00'	55.89'	28.04'	55.80'	S32°32'24"E
C29	19°48'21"	225.00'	77.84'	39.31'	77.48'	N67°41'24"W
C30	22°10'51"	225.00'	87.10'	44.10'	86.56'	N46°41'16"W
C31	3°34'58"	225.00'	14.07'	7.04'	14.07'	N33°48'24"W
C32	1°45'21"	170.00'	5.21'	2.61'	5.21'	N32°53'36"W
C33	78°17'06"	170.00'	232.28'	138.36'	214.83'	N72°54'48"W
C34	22°27'21"	220.00'	86.22'	43.67'	85.67'	N76°24'44"E
C35	23°44'00"	220.00'	91.13'	46.23'	90.48'	S80°29'38"E
C36	22°21'35"	220.00'	85.88'	43.44'	85.33'	S57°26'39"E

LOT CURVE TABLE						
CURVE #	DELTA	RADIUS	LENGTH	TANGENT	CHORD	CHORD BEARING
C37	14°14'46"	220.00'	54.70'	27.49'	54.56'	S39°06'16"E
C38	20°42'35"	175.00'	63.25'	31.98'	62.91'	S42°22'12"E
C39	34°56'47"	175.00'	106.74'	55.09'	105.09'	S70°11'54"E
C40	15°21'39"	230.00'	61.86'	31.02'	61.48'	N52°10'07"W
C41	33°02'42"	230.00'	132.85'	68.23'	130.82'	N29°33'18"W
C42	5°11'38"	230.00'	20.85'	10.43'	20.84'	N48°40'27"W
C43	1°26'41"	275.00'	6.93'	3.47'	6.93'	N50°32'56"W
C44	19°48'21"	275.00'	95.14'	48.05'	94.67'	N39°54'54"W
C45	19°51'17"	275.00'	95.30'	48.13'	94.82'	N20°04'35"W

4. Easement with utility easement
Northwest corner 130008586

City of Williamsburg & County of James City Circuit Court: This PLAT was recorded on <u>28 March 2013</u> at <u>10:38</u> AM/PM, PB = PG Document # <u>130008586</u> BETSY B. WOOLRIDGE, CLERK By <u>Thomas C. Sturiett</u> , Dep. Clerk			
1	2/28/13	REVISION PER MUNICIPAL REVIEW AND COMMENT	LBA
Rev.	Date	Description	Revised By



RES
CONSULTING ENGINEERS
5248 Old Towne Road, Suite 1
Williamsburg, Virginia 23188
Phone: (757) 253-0040
Fax: (757) 220-8994
www.resva.com

PLAT OF SUBDIVISION
WINDSOR RIDGE
SECTION 2B
LOTS 38-66
BEING THE PROPERTY OF
BOCA LAND INVESTORS, LLC.
STONEHOUSE DISTRICT JAMES CITY COUNTY VIRGINIA

Project Contacts: TCS
Project Number: 8223-13
Scale: 1" = 60'
Date: 12/10/12
Sheet Number
3 OF 4