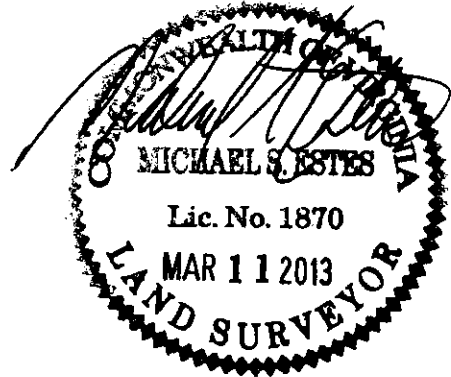
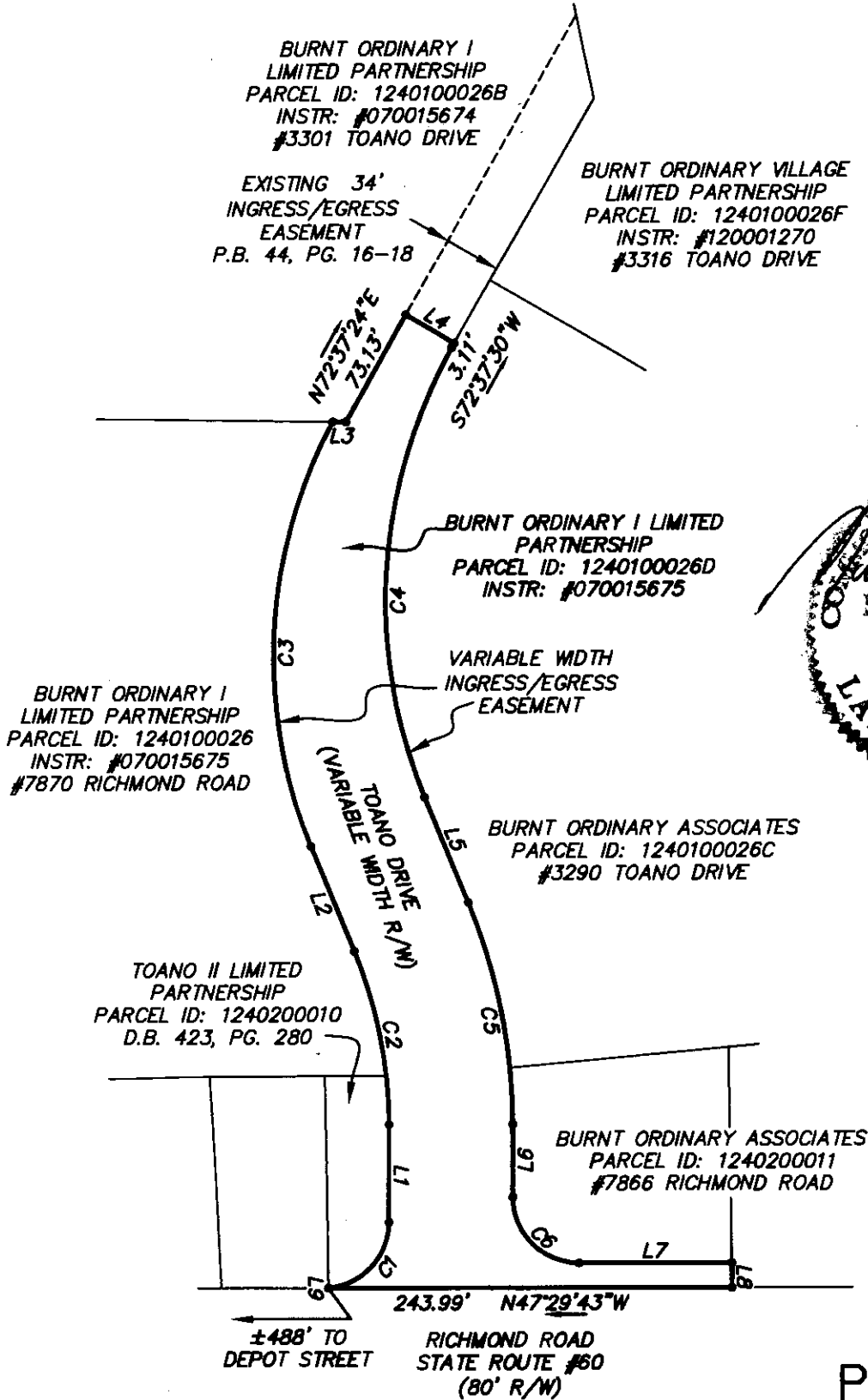


PLAT BY: HASSLER POLLOCK, P.C.
DATED: 5/20/88

CURVE TABLE						
CURVE	LENGTH	RADIUS	DELTA	CHORD	CHORD BEARING	TANGENT
C1	59.54'	40.00'	85°17'19"	54.20'	N85°08'51"E	36.84'
C2	106.05'	265.56'	22°52'51"	105.35'	N31°03'49"E	53.74'
C3	263.12'	290.62'	51°52'27"	254.23'	N45°33'38"E	141.35'
C4	278.44'	301.01'	52°59'59"	268.62'	S46°07'29"W	150.08'
C5	135.99'	340.56'	22°52'44"	135.09'	S31°03'55"W	68.91'
C6	62.83'	40.00'	90°00'00"	56.57'	S02°29'43"E	40.00'

LINE TABLE		
LINE	LENGTH	BEARING
L1	58.76'	N42°30'11"E
L2	68.63'	N19°37'24"E
L3	7.96'	S46°36'20"E
L4	34.00'	S17°22'36"E
L5	68.63'	S19°37'30"W
L6	43.76'	S42°30'17"W
L7	92.07'	S47°29'43"E
L8	15.00'	S41°39'37"W
L9	0.12'	N41°28'59"E



PLAT
of

A VARIABLE WIDTH INGRESS/EGRESS
EASEMENT ACROSS THE PROPERTY OF
BURNT ORDINARY I LIMITED PARTNERSHIP
STONEHOUSE DISTRICT
JAMES CITY COUNTY, VIRGINIA

REV: MARCH 11, 2013
REV: MARCH 8, 2013
FEBRUARY 27, 2013

SCALE: 1" = 100'

Townes
SITE ENGINEERING

9850 LORI ROAD, SUITE 201
CHESTERFIELD, VIRGINIA 23832
PHONE: (804) 748-9011 FAX: (804) 748-2590

THIS SURVEY IS SUBJECT TO ANY
EASEMENT OF RECORD AND OTHER
PERTINENT FACTS WHICH A TITLE
SEARCH MIGHT DISCLOSE.

THIS PLAT DOES NOT REFLECT A
CURRENT FIELD SURVEY.

THIS SURVEY WAS MADE FOR THE PURPOSE
OF IDENTIFYING LEGAL BOUNDARIES. THIS
SURVEY DOES NOT PURPORT TO IDENTIFY
ENVIRONMENTAL FEATURES SUCH AS WETLANDS
OR POLLUTANTS WHICH AN ENVIRONMENTAL
ASSESSMENT WOULD IDENTIFY.

DRAWN BY: MWB

CHECKED BY: HTL

J:\SPSK990\2010\0267\dwg\2010\0267_INGPFS_FGPFSS_FGPFSS_FGPFSS.dwg, 03/13/2013 10:03:17 AM, mkeyd, 11