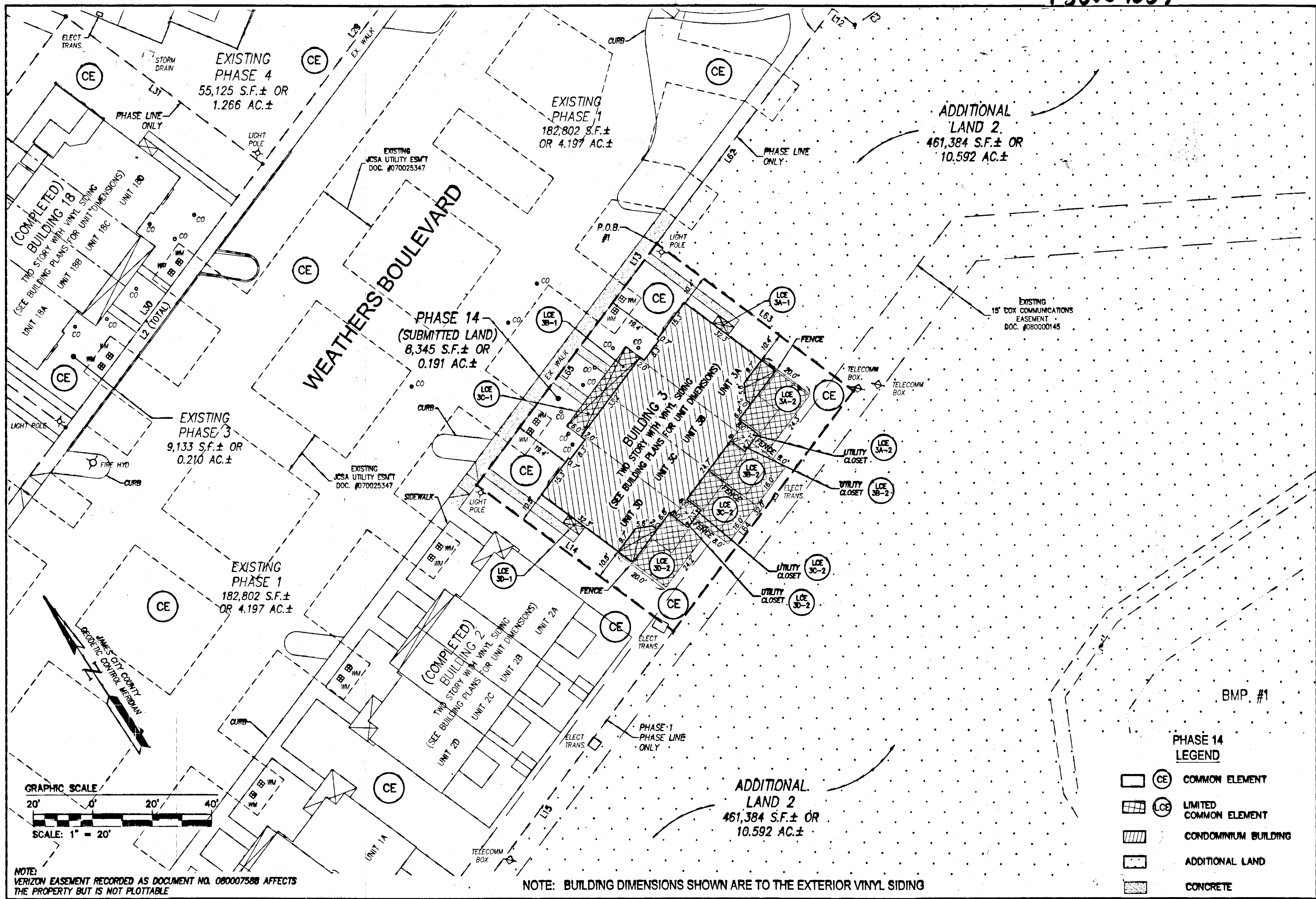


130007557



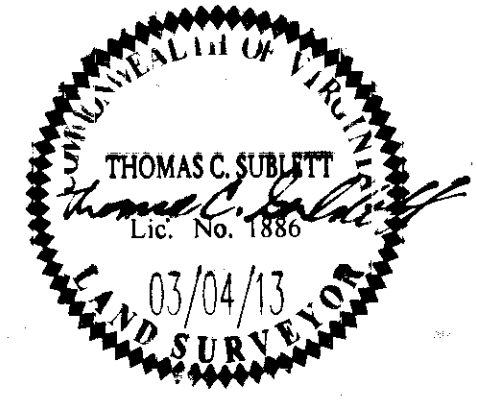
BMP #1

**PHASE 14 LEGEND**

- COMMON ELEMENT
- LIMITED COMMON ELEMENT
- CONDOMINIUM BUILDING
- ADDITIONAL LAND
- CONCRETE

Rev	Date	Description	Revised By

City of Williamsburg & County of James City  
 Circuit Court: This PLAT was recorded on  
 March 18, 2013  
 at 3:15 PM, PG. 1  
 Document # 130007557  
 BETSY B. WOOLRIDGE, CLERK  
*Betsy Woolridge*, Dep. Clerk



3 Large Wood Plats Recorded  
 hereunder as 130007557

**AES**  
 CONSULTING ENGINEERS  
 Hampton Roads | Central Virginia | Middle Peninsula

5248 Old Towne Road, Suite 1  
 Williamsburg, Virginia 23188  
 Phone: (757) 253-0040  
 Fax: (757) 220-8984  
 www.aesva.com

**PLAT OF CONDOMINIUM  
 WEATHERLY AT WHITEHALL  
 PHASE 14**

STONEHOUSE DISTRICT    JAMES CITY COUNTY    VIRGINIA

Project Contacts: JPS	
Project Number: 9048-09	
Scale: 1"=20'	Date: 03/04/13
Sheet Number	
<b>3 OF 3</b>	