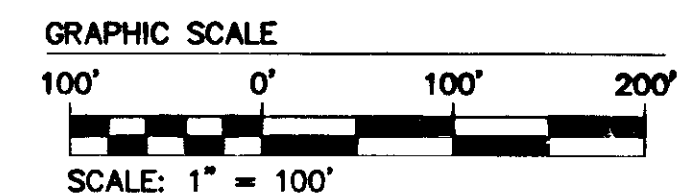
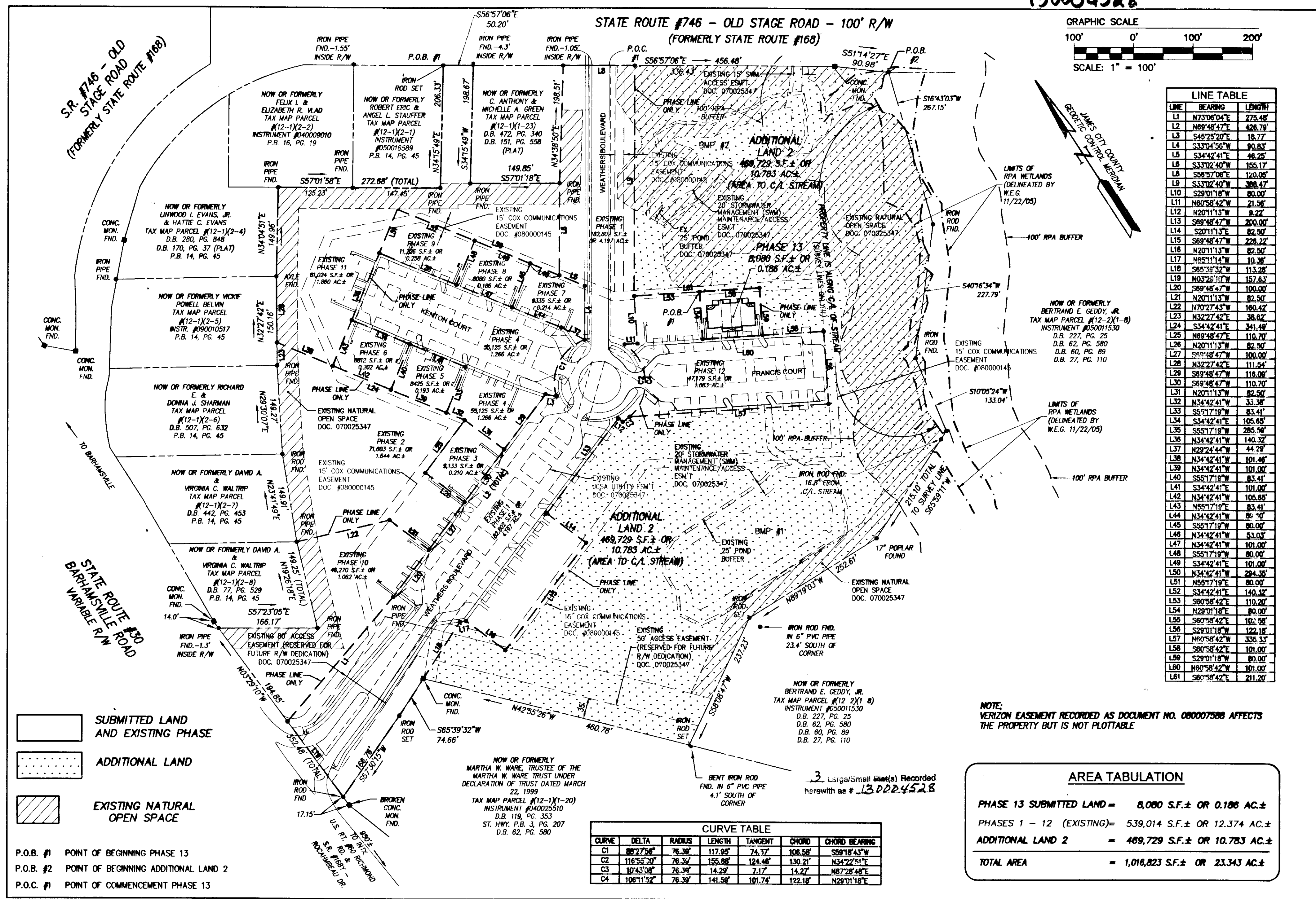


130004528



LINE	BEARING	LENGTH
L1	N73°08'04"E	275.45'
L2	N89°48'47"E	428.79'
L3	S45°25'20"E	18.77'
L4	S33°04'56"W	90.83'
L5	S34°42'41"E	48.25'
L6	S33°02'40"W	155.17'
L7	S56°57'08"E	120.05'
L8	S33°02'40"W	388.47'
L9	S29°01'18"W	80.00'
L10	N60°58'42"W	21.56'
L11	N20°11'13"W	8.22'
L12	S69°48'47"W	200.00'
L13	S20°11'13"E	82.50'
L14	S89°48'47"W	228.22'
L15	N20°11'13"W	82.50'
L16	N85°11'14"W	10.38'
L17	S89°39'32"W	113.28'
L18	N63°29'10"W	157.63'
L19	S89°48'47"W	100.00'
L20	S89°48'47"W	82.50'
L21	N20°11'13"W	82.50'
L22	N70°27'43"W	160.42'
L23	N32°27'42"E	38.62'
L24	S34°42'41"E	341.48'
L25	N89°48'47"E	110.70'
L26	N20°11'13"W	82.50'
L27	S89°48'47"W	100.00'
L28	N32°27'42"E	111.54'
L29	S89°48'47"W	118.00'
L30	S89°48'47"W	110.70'
L31	N20°11'13"W	82.50'
L32	N34°42'41"W	33.38'
L33	S57°17'19"W	83.41'
L34	S34°42'41"E	105.65'
L35	S57°17'19"W	285.50'
L36	N34°42'41"W	140.32'
L37	N29°24'44"W	44.29'
L38	N34°42'41"W	101.48'
L39	N34°42'41"W	101.00'
L40	S57°17'19"W	83.41'
L41	S34°42'41"E	101.00'
L42	N34°42'41"W	105.65'
L43	N57°17'19"E	83.41'
L44	N34°42'41"W	89.50'
L45	S57°17'19"W	80.00'
L46	N34°42'41"W	53.03'
L47	N34°42'41"W	101.00'
L48	S57°17'19"W	80.00'
L49	S34°42'41"E	101.00'
L50	N34°42'41"W	284.35'
L51	N57°17'19"E	80.00'
L52	S34°42'41"E	140.32'
L53	S60°58'42"E	110.20'
L54	N29°01'18"E	80.00'
L55	S60°58'42"E	102.58'
L56	S29°01'18"W	122.18'
L57	N60°58'42"W	335.33'
L58	S60°58'42"E	101.00'
L59	S29°01'18"W	80.00'
L60	N60°58'42"W	101.00'
L61	S60°58'42"E	211.20'

- SUBMITTED LAND AND EXISTING PHASE
- ADDITIONAL LAND
- EXISTING NATURAL OPEN SPACE

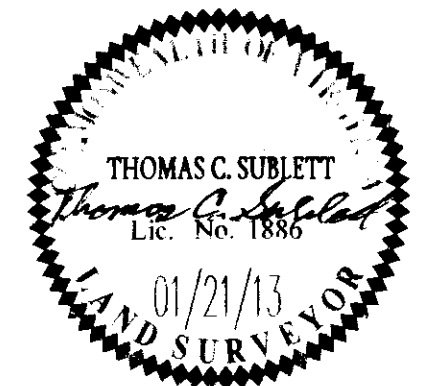
P.O.B. #1 POINT OF BEGINNING PHASE 13
 P.O.B. #2 POINT OF BEGINNING ADDITIONAL LAND 2
 P.O.C. #1 POINT OF COMMENCEMENT PHASE 13

CURVE	DELTA	RADIUS	LENGTH	TANGENT	CHORD	CHORD BEARING
C1	86°27'56"	76.39'	117.95'	74.77'	106.58'	S69°18'43"W
C2	116°55'39"	76.39'	155.89'	124.48'	130.21'	N34°22'51"E
C3	10°43'08"	76.39'	14.29'	7.17'	14.27'	N87°28'48"E
C4	106°11'52"	76.39'	141.59'	101.74'	122.18'	N29°01'18"E

NOTE: VERIZON EASEMENT RECORDED AS DOCUMENT NO. 080007588 AFFECTS THE PROPERTY BUT IS NOT PLOTTABLE

AREA TABULATION	
PHASE 13 SUBMITTED LAND =	8,080 S.F. ± OR 0.186 AC. ±
PHASES 1 - 12 (EXISTING) =	539,014 S.F. ± OR 12.374 AC. ±
ADDITIONAL LAND 2 =	469,729 S.F. ± OR 10.783 AC. ±
TOTAL AREA	= 1,016,823 S.F. ± OR 23.343 AC. ±

City of Williamsburg & County of James City
 Circuit Court: This PLAT was recorded on
 at 10:14 AM/PM, PG. 89
 Document # 130004528
 BETSY B. WOOLRIDGE, CLERK
 Dep. Clerk



AES
 CONSULTING ENGINEERS
 5248 Olde Towne Road, Suite 1
 Williamsburg, Virginia 23188
 Phone: (757) 253-0040
 Fax: (757) 220-8994
 www.aesva.com

**PLAT OF CONDOMINIUM
 WEATHERLY AT WHITEHALL
 PHASE 13**

STONEHOUSE DISTRICT JAMES CITY COUNTY VIRGINIA

Project Contacts: JFS
 Project Number: 9048-09
 Scale: 1"=100' Date: 01/21/13
 Sheet Number
2 OF 3