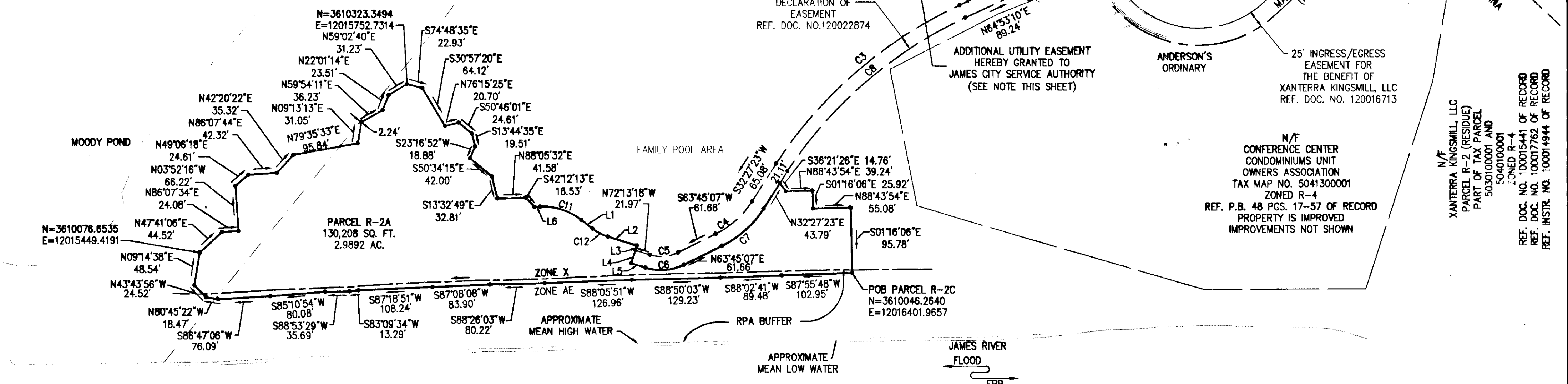
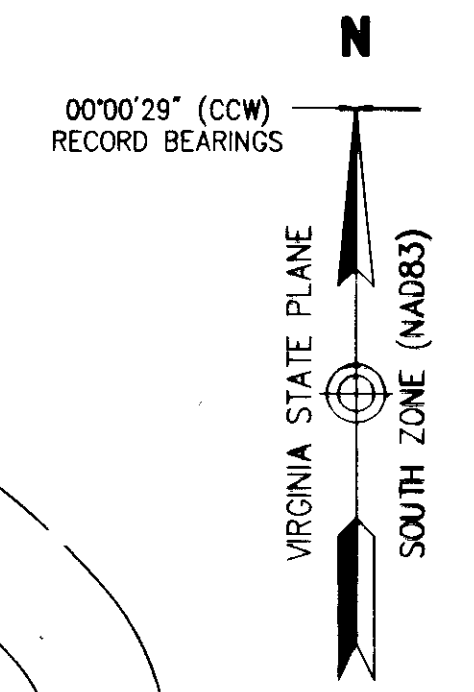


CHESAPEAKE BAY  
RESOURCE PROTECTION AREA (RPA)  
REMOVAL OF  
VEGETATION  
PROHIBITED  
www.protectedwithpride.org

JAMES CITY COUNTY  
RPA/CONSERVATION EASEMENT SIGN  
INSTALLATION GUIDELINES  
(8 INCHES X 6 INCHES)  
NOT TO SCALE

N/F  
XANTERRA KINGSMILL, LLC  
PARCEL R-2 (RESIDUE)  
PART OF TAX PARCEL  
5030100001 AND  
5040100001  
ZONED R-4  
REF. DOC. NO. 100015441 OF RECORD  
REF. DOC. NO. 100017762 OF RECORD  
REF. INSTR. NO. 100014944 OF RECORD  
OLD AREA=206.20± AC.  
NEW AREA=203.21± AC.

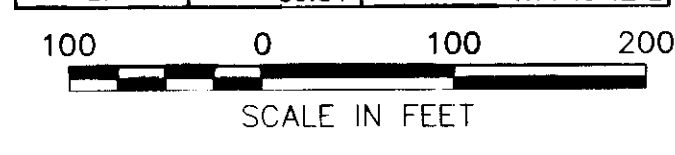
NOTE: EASEMENTS DENOTED AS "JCSA UTILITY  
EASEMENTS" ARE FOR THE EXCLUSIVE USE OF THE JAMES  
CITY SERVICE AUTHORITY AND THE PROPERTY OWNER.  
OTHER UTILITY SERVICE PROVIDERS DESIRING TO USE  
THESE EASEMENTS WITH THE EXCEPTION OF  
PERPENDICULAR UTILITY CROSSINGS MUST OBTAIN  
AUTHORIZATION FOR ACCESS AND USE FROM JCSA AND  
THE PROPERTY OWNER. ADDITIONALLY, JCSA SHALL NOT  
BE HELD RESPONSIBLE FOR ANY DAMAGE TO  
IMPROVEMENTS WITHIN THIS EASEMENT, FROM ANY CAUSE.



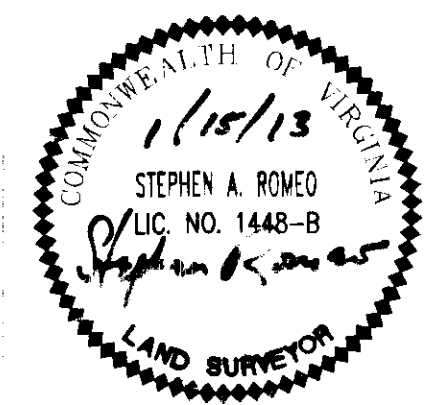
CURVE TABLE						
CURVE	LENGTH	RADIUS	TANGENT	CHORD	CHORD BEARING	DELTA
C1	29.32'	25.00'	16.61'	27.66'	S38°14'08"W	67°11'07"
C2	42.41'	350.00'	21.23'	42.38'	S68°21'26"W	6°56'32"
C3	358.90'	654.64'	184.08'	354.42'	S49°10'49"W	31°24'41"
C4	72.10'	132.00'	36.97'	71.21'	S48°06'15"W	31°17'44"
C5	42.26'	55.00'	22.24'	41.23'	S85°45'54"W	44°01'35"
C6	57.63'	75.00'	30.32'	56.22'	N85°45'54"E	44°01'35"
C7	83.02'	152.00'	42.58'	82.00'	N48°06'15"E	31°17'44"
C8	347.76'	634.64'	178.36'	343.42'	N49°11'18"E	31°23'44"
C9	39.98'	330.00'	20.02'	39.96'	N68°21'26"E	6°56'32"
C10	20.12'	12.50'	13.00'	18.02'	S62°03'33"E	92°13'32"
C11	64.45'	91.50'	33.62'	63.12'	S71°52'24"E	40°21'18"
C12	25.79'	72.00'	13.04'	25.66'	S61°57'32"E	20°31'35"

LINE TABLE		
LINE	LENGTH	BEARING
L1	20.25'	S51°41'45"E
L2	44.31'	S72°13'18"E
L3	6.92'	S17°46'42"W
L4	20.00'	S17°46'42"W
L5	21.97'	S72°13'18"E
L6	8.62'	N87°56'57"E
L7	59.84'	N71°49'42"E

2. Large Format Plat(s) Recorded  
with as # 130004299



City of Williamsburg & County of James City  
Circuit Court: This PLAT was recorded on  
**February 11 2013**  
at 3:02 PM, PG  
Document # 130004299  
BETSY B. WOOLRIDGE, CLERK  
*Patricia N. ...*, Dep. Clerk



**COTTAGES ON THE JAMES  
PARCEL R-2A  
BEING A SUBDIVISION OF  
TAX PARCEL 5040100001  
PROPERTY OF  
XANTERRA KINGSMILL, LLC  
ROBERTS DISTRICT, JAMES CITY COUNTY, VIRGINIA  
SHEET 2 OF 2  
DATE: 1/15/13 SCALE: 1"=100'**



**Vanessa Hangan Brustin, Inc.**  
Transportation, Land Development, Environmental Services  
351 McLennan Circle, Suite 3  
Williamsburg, Virginia 23185  
(757) 220-0500 • FAX (757) 220-8544