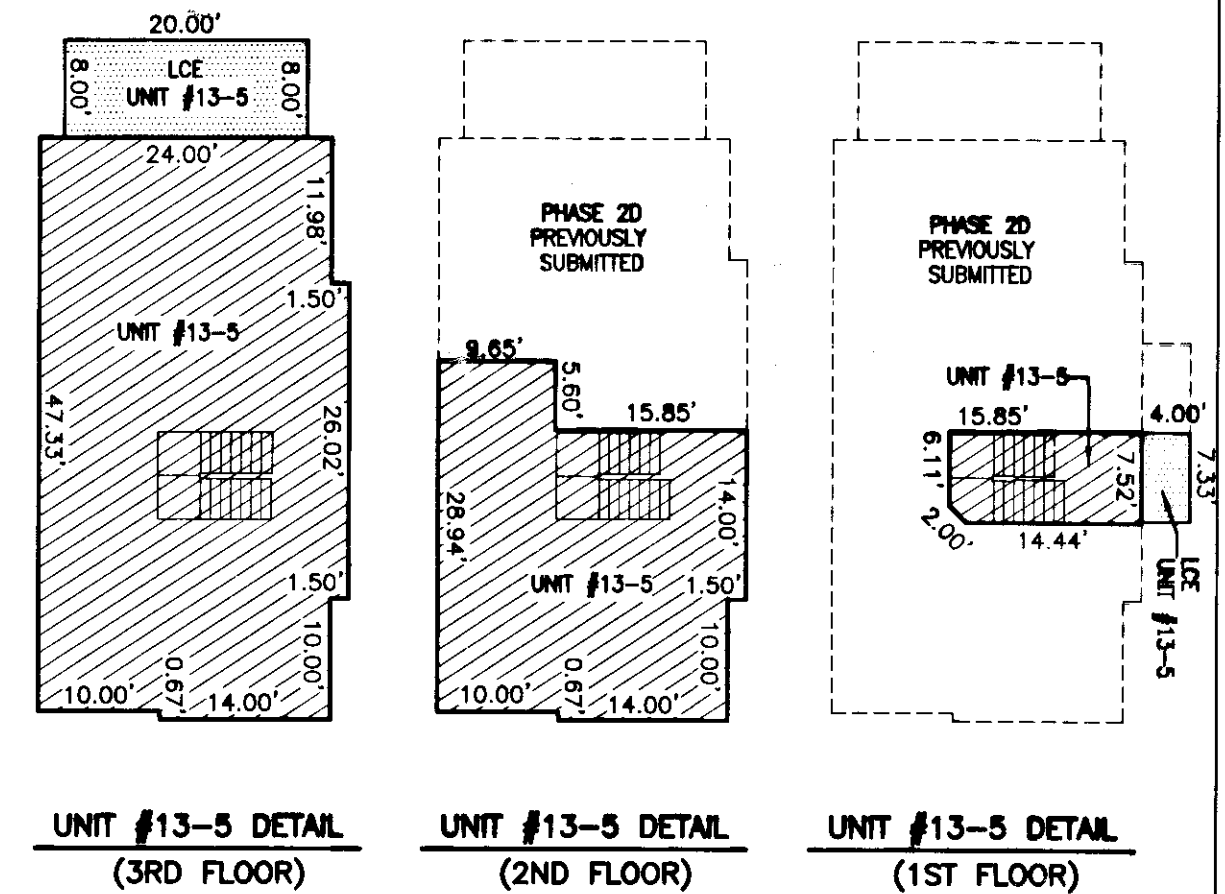
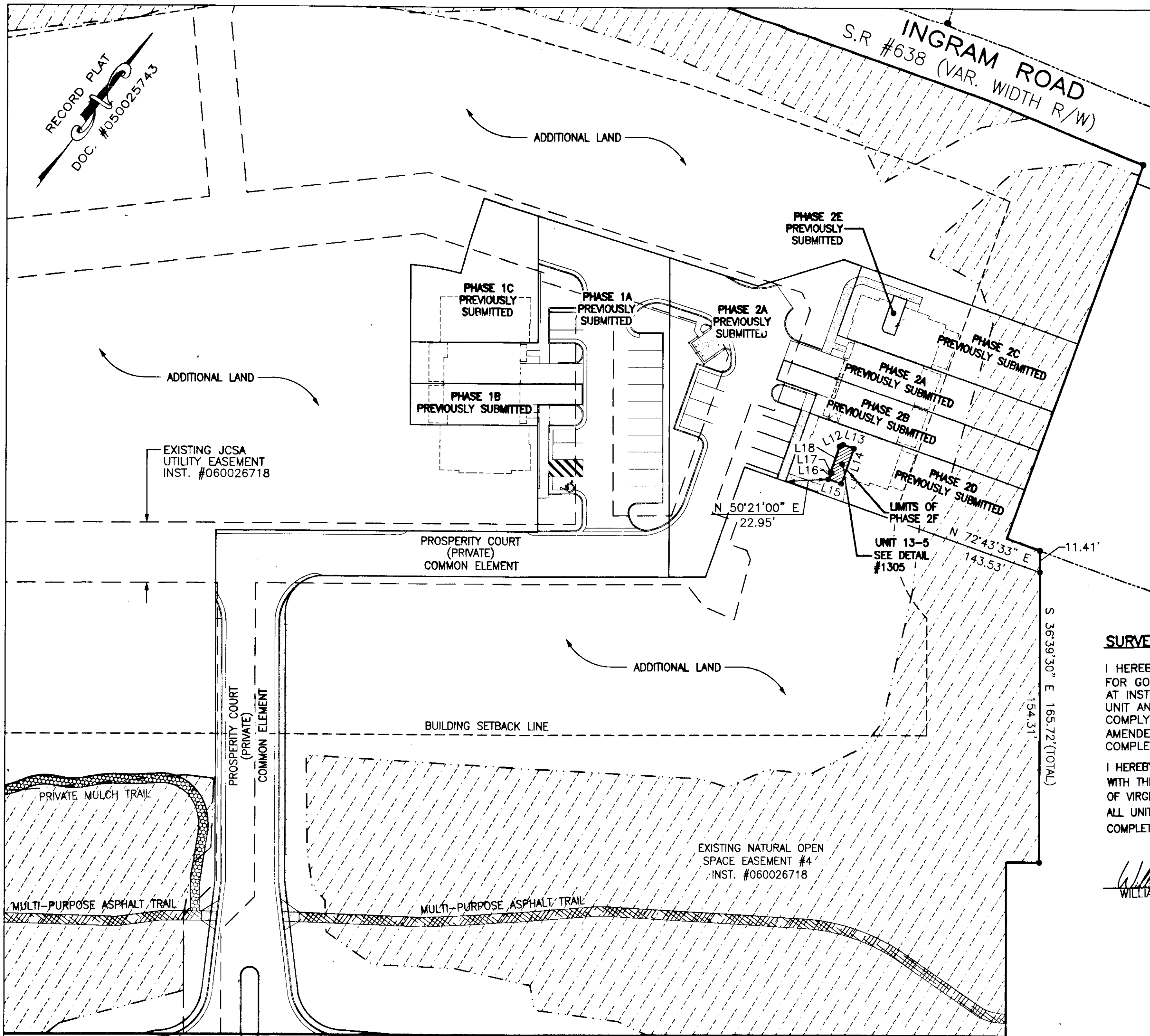


130003125

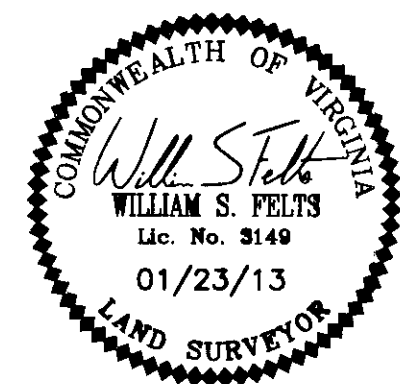


- INDICATES LIMITED COMMON ELEMENT
- INDICATES UNIT AREA
- INDICATES COMMON ELEMENT
- LCE=LIMITED COMMON ELEMENT

SURVEYORS CERTIFICATE

I HEREBY CERTIFY THAT THE PLAN PREVIOUSLY RECORDED FOR GOVERNOR'S GROVE AT FIVE FORKS, A CONDOMINIUM AT INSTRUMENT 090022560 ACCURATELY DEPICTS THE UNIT AND RELATED IMPROVEMENTS SHOWN AND THAT THEY COMPLY WITH THE CODE OF VIRGINIA OF 1950, AS AMENDED 55-79.58(B) AND ARE SUBSTANTIALLY COMPLETE.

I HEREBY CERTIFY THAT THIS PLAT IS ACCURATE AND COMPLIES WITH THE PROVISIONS OF SECTION 55-79.58 (A) OF THE CODE OF VIRGINIA 1950 AS AMENDED AND I FURTHER CERTIFY THAT ALL UNITS DEPICTED HEREON HAVE BEEN SUBSTANTIALLY COMPLETE.



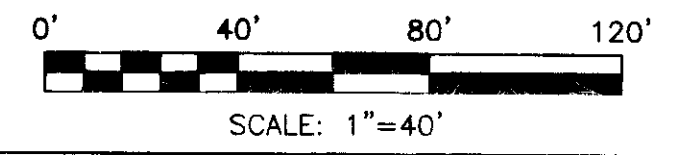
W.S. Felts
WILLIAM S. FELTS LIC.# 3149

01/23/13 DATE
2 Large/Small Plat(s) Recorded
herewith as # 130003125

PLAT OF
PHASE 2F
GOVERNOR'S GROVE AT FIVE FORKS
A CONDOMINIUM
LOCATED IN THE BERKELEY DISTRICT
JAMES CITY COUNTY, VIRGINIA

DATE: 01/23/13 SCALE: 1" = 40' JOB# 06-480
SHEET 2 OF 2

JOHN TYLER HIGHWAY
STATE ROUTE #5
(VARIABLE WIDTH PUBLIC R/W)



UNIT NUMBER	UNIT TYPE	STREET ADDRESS	PARCEL ID#
13-5	B(R)	#1305 PROSPERITY CT	4712101305

City of Williamsburg & County of James City
Circuit Court: This PLAT was recorded on
31 Jan, 2013
at _____ AM/PM, PB _____ PG _____
Document # 130003125
BETSY B. WOOLRIDGE, CLERK
By *Wendie H. Williamsburg*, Dep. Clerk

LandTech Resources, Inc.
Surveying • Engineering • GPS

205-E Bulfinch Blvd, Williamsburg, VA 23188
Phone: (757) 565-1677 Fax: (757) 565-0782
web: landtechresources.com