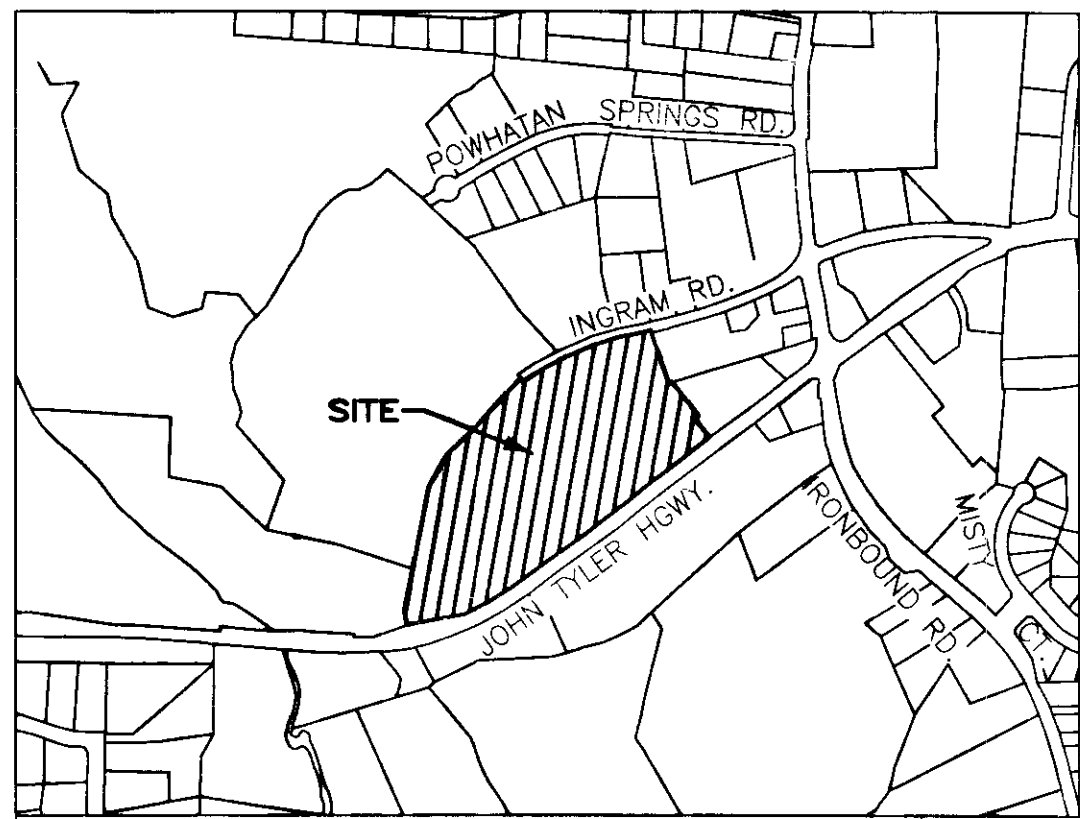


130003124



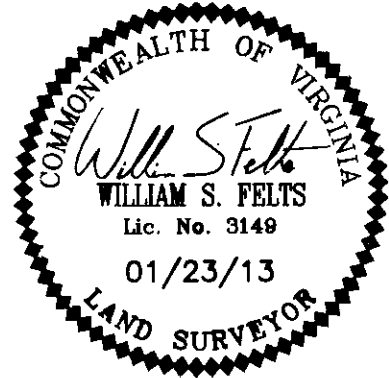
VICINITY MAP - NOT TO SCALE

SURVEYORS CERTIFICATE

I HEREBY CERTIFY THAT THIS PLAT IS ACCURATE AND COMPLIES WITH THE PROVISIONS OF SECTION 55-79.58 (A) OF THE CODE OF VIRGINIA 1950 AS AMENDED.

William S. Felts
WILLIAM S. FELTS LIC.# 3149

01/23/13
DATE

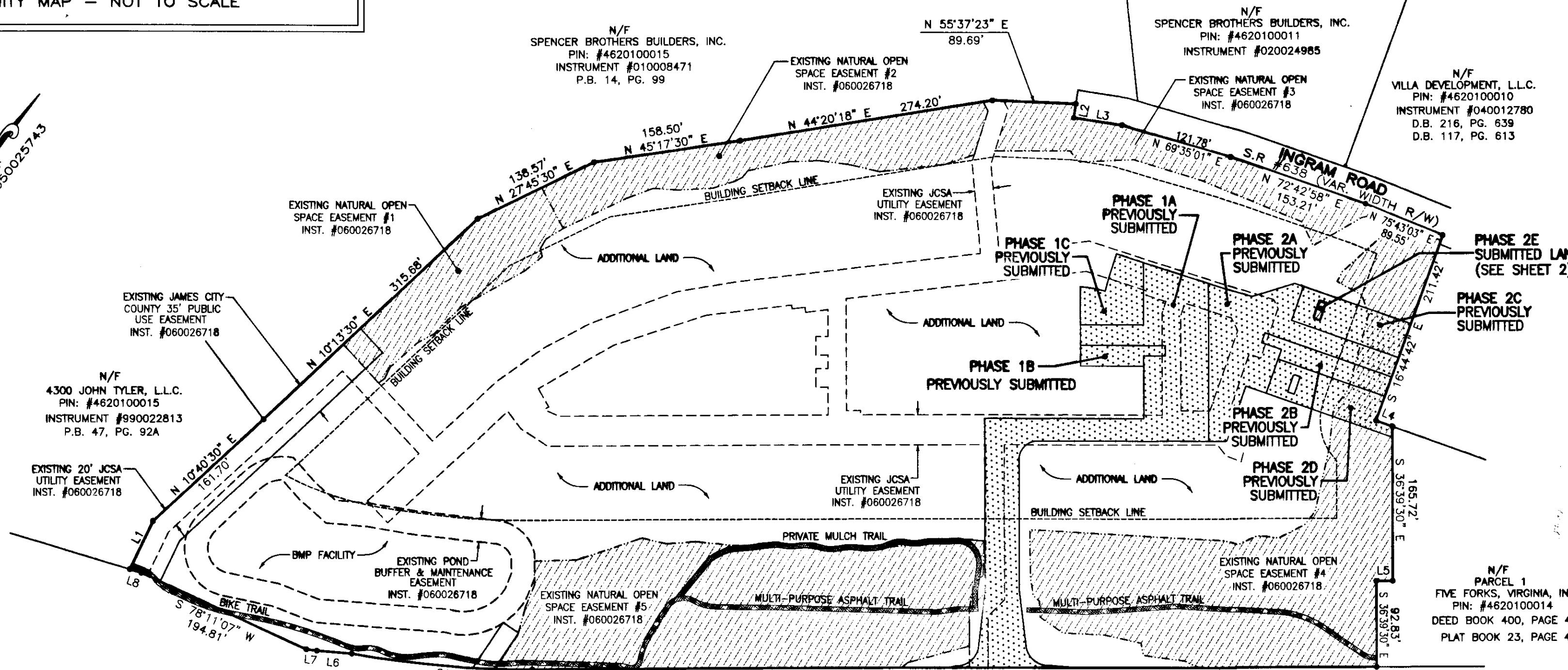


AREA TABLE

PARCEL	SQ. FT.	ACRES
PHASE 2E SUBMITTED LAND	148	0.003
PREVIOUSLY SUBMITTED LAND	54,989	1.262
ADDITIONAL LAND	598,099	13.731
TOTAL	653,236	14.996

PLAT OF
PHASE 2E
GOVERNOR'S GROVE AT FIVE FORKS
A CONDOMINIUM
LOCATED IN THE BERKELEY DISTRICT
JAMES CITY COUNTY, VIRGINIA
DATE: 01/23/13 SCALE: 1" = 100' JOB# 06-480
SHEET 1 OF 2

LandTech Resources, Inc.
Surveying • Engineering • GPS
205-E Bulfinch Blvd. Williamsburg, VA 23188
Phone: (757) 565-1677 Fax: (757) 565-0782
web: landtechresources.com

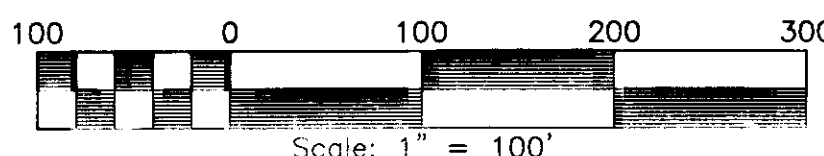


SUBMITTED LAND
 PREVIOUSLY SUBMITTED LAND

2 Large/Small Plat(s) Recorded herewith as # 130003124

GENERAL NOTES

1. THIS PLAT WAS PRODUCED WITHOUT A TITLE REPORT AND MAY NOT REFLECT ALL MATTERS AFFECTING PROPERTY.
2. THIS PROPERTY APPEARS TO FALL IN ZONE "X" AS SHOWN ON COMMUNITY PANEL 51095C0205C DATED SEPTEMBER 28, 2007.
3. ALL UNITS TO BE SERVED BY PUBLIC WATER AND SEWER.
4. ALL LAND AND IMPROVEMENTS OUTSIDE OF BUILDINGS AND WITHIN PHASE LIMITS SHALL BE KNOWN AS COMMON ELEMENT EXCEPT FOR LIMITED COMMON ELEMENTS DESIGNATED ON PLAT AND BUILDING PLANS.
5. THIS PARCEL OF LAND WAS CONVEYED TO LEGACY GOVERNOR'S GROVE, LLC BY DEED RECORDED IN INSTRUMENT #090022562.
6. THE STREETS WITHIN THIS CONDOMINIUM SHALL BE KNOWN AS COMMON ELEMENT AND NOT A PUBLIC DEDICATED RIGHT-OF-WAY.
7. PHASE 2E IS SUBMITTED LAND. THE REMAINING PROPERTY HAS BEEN PREVIOUSLY SUBMITTED OR ADDITIONAL LAND. ALL ADDITIONAL LAND AND ALL COMMON ELEMENTS ARE WITHDRAWABLE LAND.
8. PROFFERED COVENANTS, RESTRICTIONS, AND CONDITIONS AFFECTING THIS PROPERTY HAVE BEEN RECORDED AS INST. #050019045.
9. THE LOCATION OF THE PRIVATE MULCH TRAIL AND THE ASPHALT MULTI-PURPOSE TRAIL ARE APPROXIMATE ONLY AND SUBJECT TO CHANGE.



JOHN TYLER HIGHWAY
STATE ROUTE #5
(VARIABLE WIDTH PUBLIC R/W)

City of Williamsburg & County of James City
Circuit Court: This PLAT was recorded on
31 Jan. 2013
at 10:23 AM/PM, PB PG
Document # 130003124
BETSY B. WOOLDRIDGE, CLERK
By *Betsy Wooldridge*, Dep. Clerk

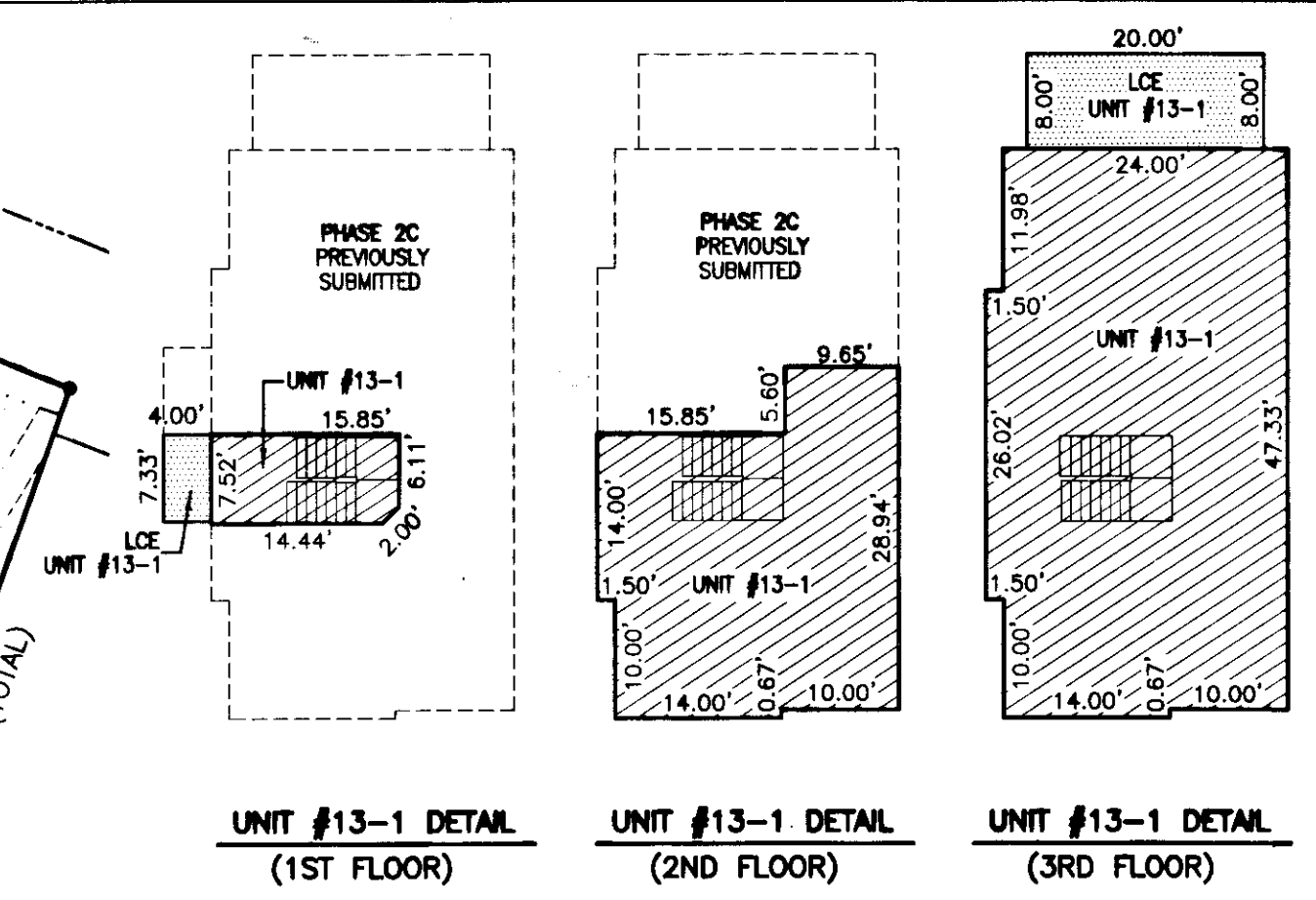
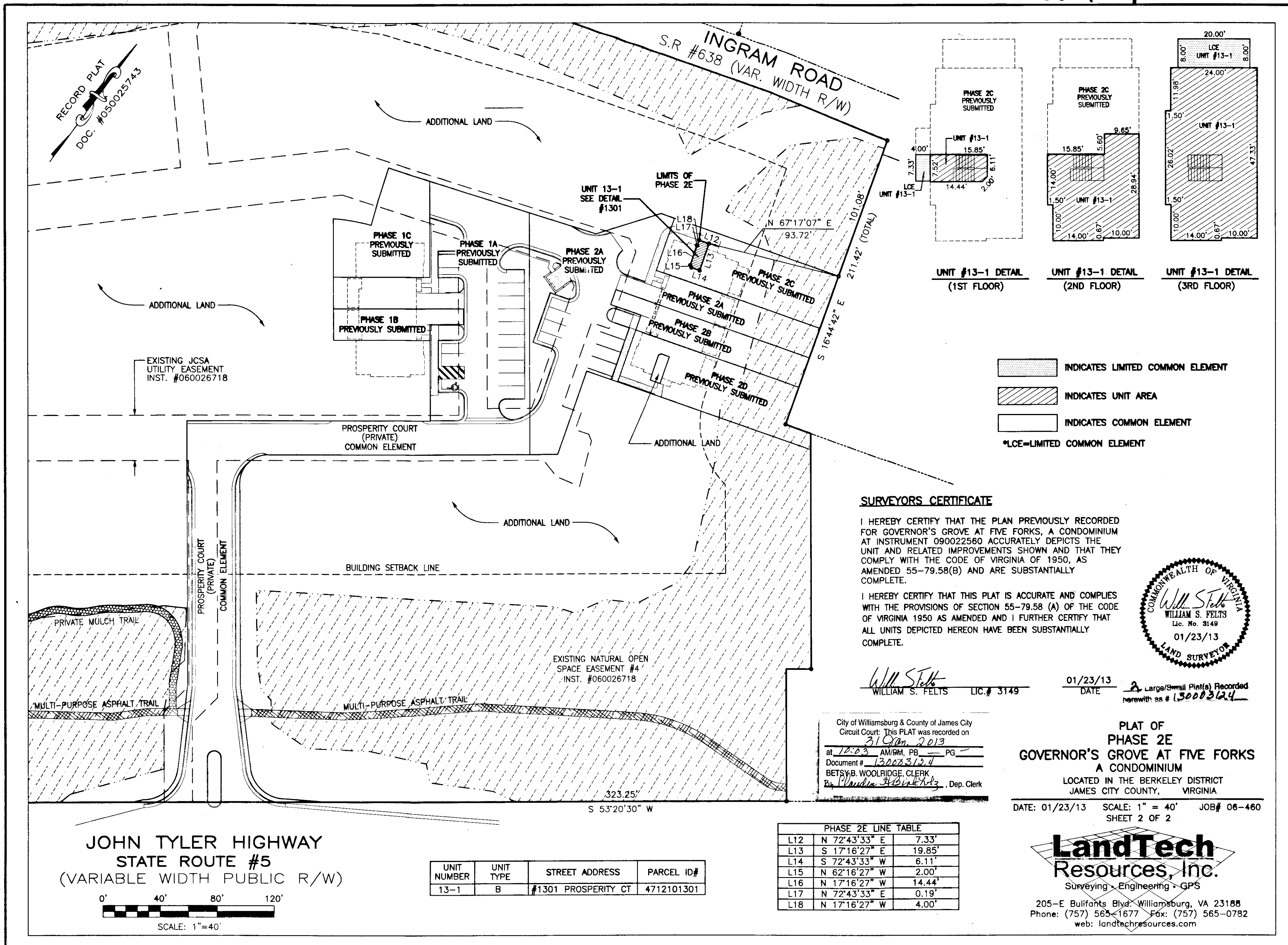
CURVE TABLE

NO.	DELTA	CHORD BEARING	TANGENT	RADIUS	ARC	CHORD
C1	10°00'21"	S 58°20'41" W	97.69'	1116.00'	194.89'	194.64'
C2	84°01'13"	N 85°30'40" W	22.07'	24.50'	35.93'	32.79'
C3	90°00'00"	N 08°20'30" E	20.00'	20.00'	31.42'	28.28'

LINE TABLE

NO.	DIRECTION	DISTANCE
L1	N 10°44'30" W	57.40'
L2	S 27°48'08" E	15.00'
L3	N 62°11'52" E	52.25'
L4	N 73°15'18" E	18.75'
L5	S 53°20'30" W	17.63'
L6	S 58°14'37" W	37.63'
L7	S 60°24'36" W	11.43'
L8	S 70°12'23" W	12.96'
L9	N 17°16'27" W	11.00'
L10	S 72°43'33" W	22.50'
L11	N 17°16'27" W	11.00'

130003124



INDICATES LIMITED COMMON ELEMENT

 INDICATES UNIT AREA

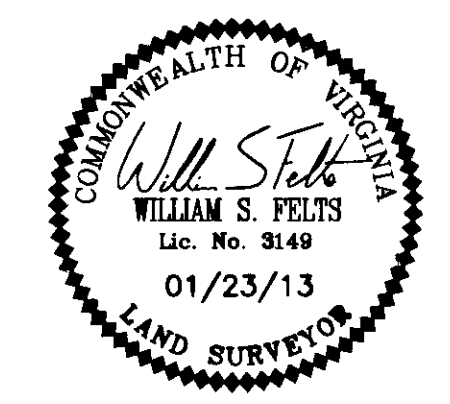
 INDICATES COMMON ELEMENT

 *LCE=LIMITED COMMON ELEMENT

SURVEYORS CERTIFICATE

I HEREBY CERTIFY THAT THE PLAN PREVIOUSLY RECORDED FOR GOVERNOR'S GROVE AT FIVE FORKS, A CONDOMINIUM AT INSTRUMENT 090022560 ACCURATELY DEPICTS THE UNIT AND RELATED IMPROVEMENTS SHOWN AND THAT THEY COMPLY WITH THE CODE OF VIRGINIA OF 1950, AS AMENDED 55-79.58(B) AND ARE SUBSTANTIALLY COMPLETE.

I HEREBY CERTIFY THAT THIS PLAT IS ACCURATE AND COMPLIES WITH THE PROVISIONS OF SECTION 55-79.58 (A) OF THE CODE OF VIRGINIA 1950 AS AMENDED AND I FURTHER CERTIFY THAT ALL UNITS DEPICTED HEREON HAVE BEEN SUBSTANTIALLY COMPLETE.



WILLIAM S. FELTS LIC.# 3149

 DATE 01/23/13

 Large/Small Plat(s) Recorded herewith as # 130003124

City of Williamsburg & County of James City

 Circuit Court: This PLAT was recorded on

 31 Jan 2013

 at 10:03 AM/PM, PB PG

 Document # 130003124

 BETSY B. WOOLRIDGE, CLERK

 By Claudia Binkley, Dep. Clerk

PLAT OF

PHASE 2E

GOVERNOR'S GROVE AT FIVE FORKS

A CONDOMINIUM

 LOCATED IN THE BERKELEY DISTRICT

 JAMES CITY COUNTY, VIRGINIA

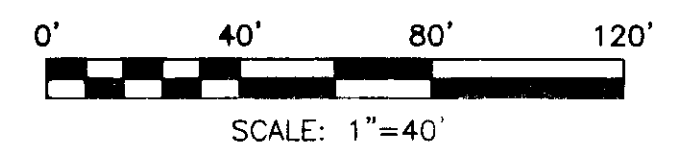
DATE: 01/23/13 SCALE: 1" = 40' JOB# 06-460

 SHEET 2 OF 2

JOHN TYLER HIGHWAY

STATE ROUTE #5

 (VARIABLE WIDTH PUBLIC R/W)



SCALE: 1"=40'

UNIT NUMBER	UNIT TYPE	STREET ADDRESS	PARCEL ID#
13-1	B	#1301 PROSPERITY CT	4712101301

PHASE 2E LINE TABLE

L12	N 72°43'33" E	7.33'
L13	S 17°16'27" E	19.85'
L14	S 72°43'33" W	6.11'
L15	N 62°16'27" W	2.00'
L16	N 17°16'27" W	14.44'
L17	N 72°43'33" E	0.19'
L18	N 17°16'27" W	4.00'