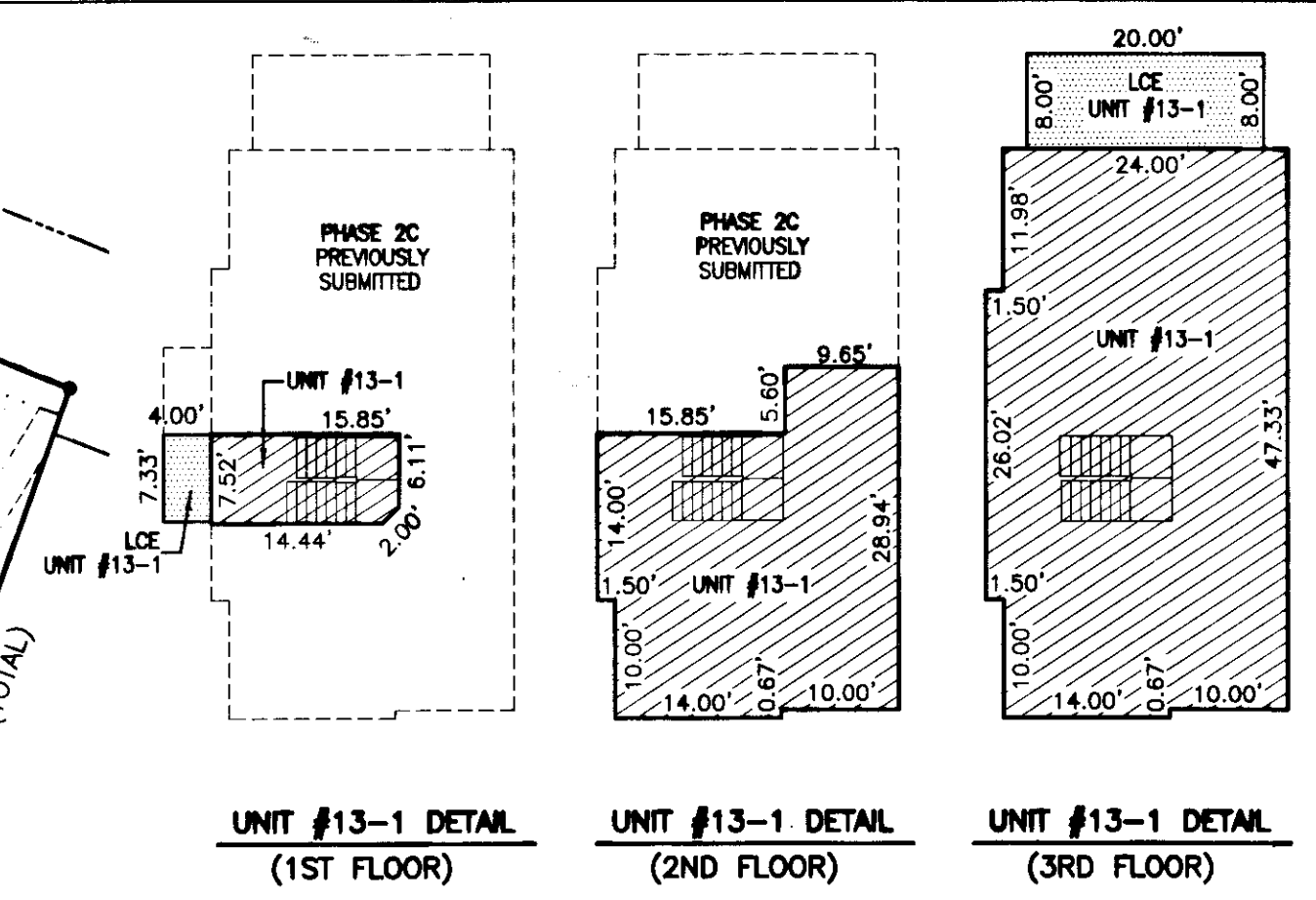
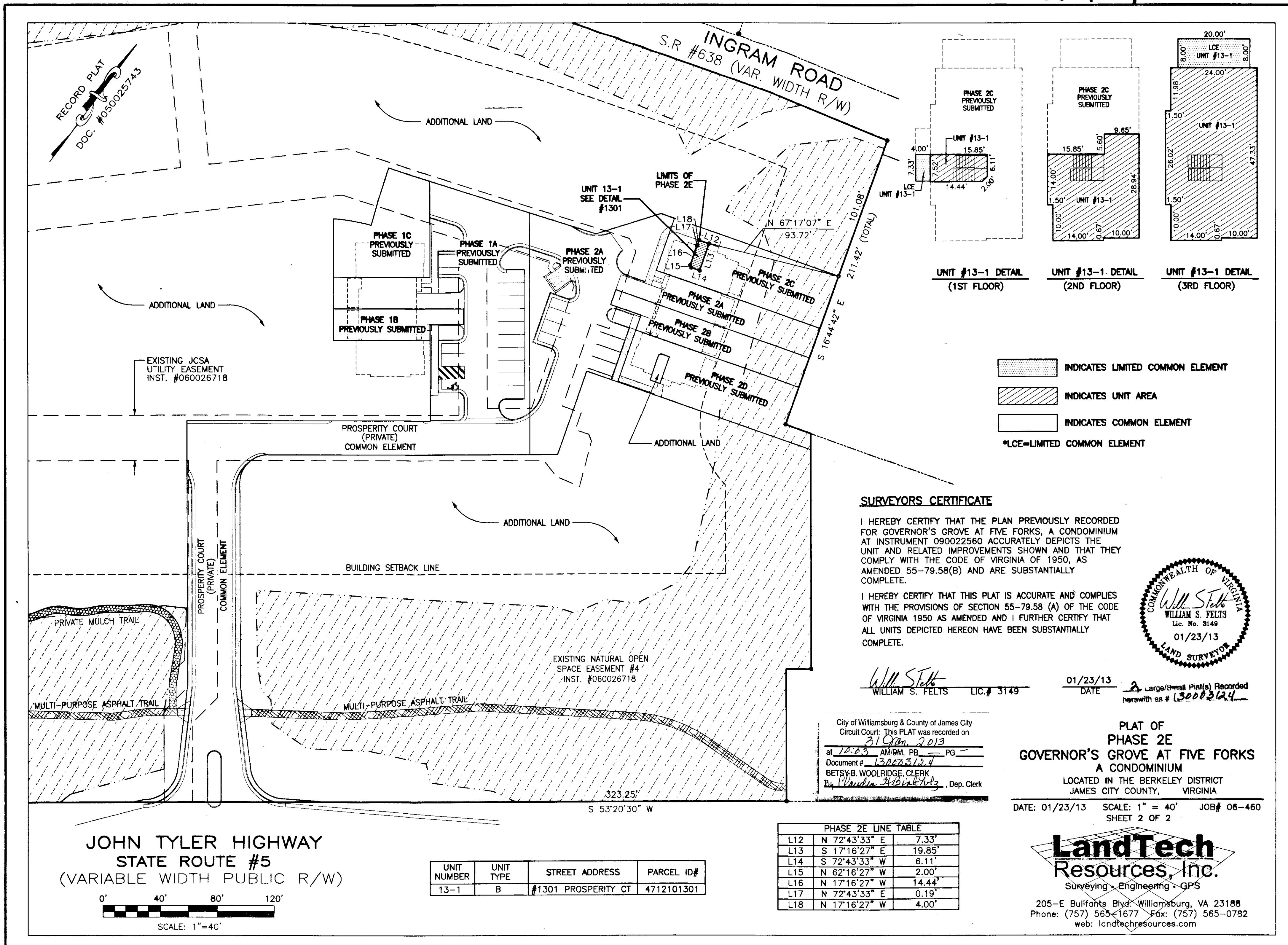


130003124



INDICATES LIMITED COMMON ELEMENT

 INDICATES UNIT AREA

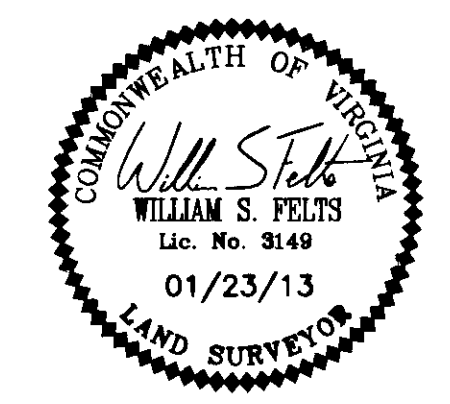
 INDICATES COMMON ELEMENT

 *LCE=LIMITED COMMON ELEMENT

SURVEYORS CERTIFICATE

I HEREBY CERTIFY THAT THE PLAN PREVIOUSLY RECORDED FOR GOVERNOR'S GROVE AT FIVE FORKS, A CONDOMINIUM AT INSTRUMENT 090022560 ACCURATELY DEPICTS THE UNIT AND RELATED IMPROVEMENTS SHOWN AND THAT THEY COMPLY WITH THE CODE OF VIRGINIA OF 1950, AS AMENDED 55-79.58(B) AND ARE SUBSTANTIALLY COMPLETE.

I HEREBY CERTIFY THAT THIS PLAT IS ACCURATE AND COMPLIES WITH THE PROVISIONS OF SECTION 55-79.58 (A) OF THE CODE OF VIRGINIA 1950 AS AMENDED AND I FURTHER CERTIFY THAT ALL UNITS DEPICTED HEREON HAVE BEEN SUBSTANTIALLY COMPLETE.



WILLIAM S. FELTS LIC.# 3149

 DATE: 01/23/13

 Large/Small Plat(s) Recorded herewith as # 130003124

City of Williamsburg & County of James City

 Circuit Court: This PLAT was recorded on

 31 Jan. 2013

 at 10:03 AM/PM, PB PG

 Document # 130003124

 BETSY B. WOOLRIDGE, CLERK

 By Claudia Binkley, Dep. Clerk

PLAT OF

PHASE 2E

GOVERNOR'S GROVE AT FIVE FORKS

A CONDOMINIUM

 LOCATED IN THE BERKELEY DISTRICT

 JAMES CITY COUNTY, VIRGINIA

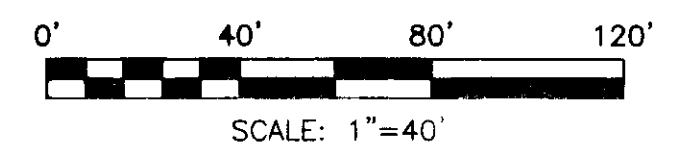
DATE: 01/23/13 SCALE: 1" = 40' JOB# 06-460

 SHEET 2 OF 2

JOHN TYLER HIGHWAY

STATE ROUTE #5

 (VARIABLE WIDTH PUBLIC R/W)



UNIT NUMBER	UNIT TYPE	STREET ADDRESS	PARCEL ID#
13-1	B	#1301 PROSPERITY CT	4712101301

PHASE 2E LINE TABLE

L12	N 72°43'33" E	7.33'
L13	S 17°16'27" E	19.85'
L14	S 72°43'33" W	6.11'
L15	N 62°16'27" W	2.00'
L16	N 17°16'27" W	14.44'
L17	N 72°43'33" E	0.19'
L18	N 17°16'27" W	4.00'