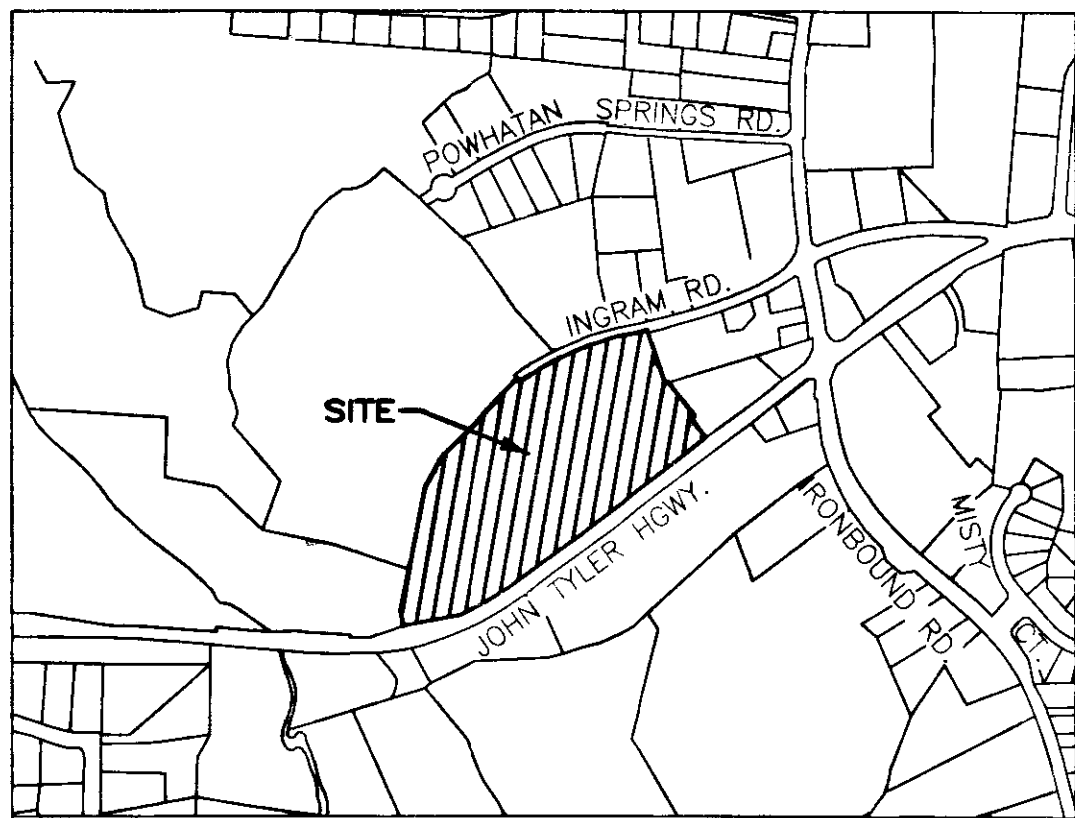


130003122

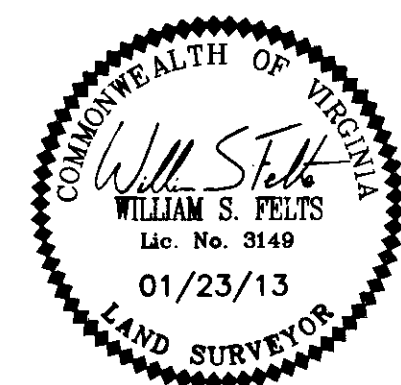


VICINITY MAP - NOT TO SCALE

SURVEYORS CERTIFICATE

I HEREBY CERTIFY THAT THIS PLAT IS ACCURATE AND COMPLIES WITH THE PROVISIONS OF SECTION 55-79.58 (A) OF THE CODE OF VIRGINIA 1950 AS AMENDED.

William S. Felts
 WILLIAM S. FELTS LIC.# 3149 01/23/13 DATE

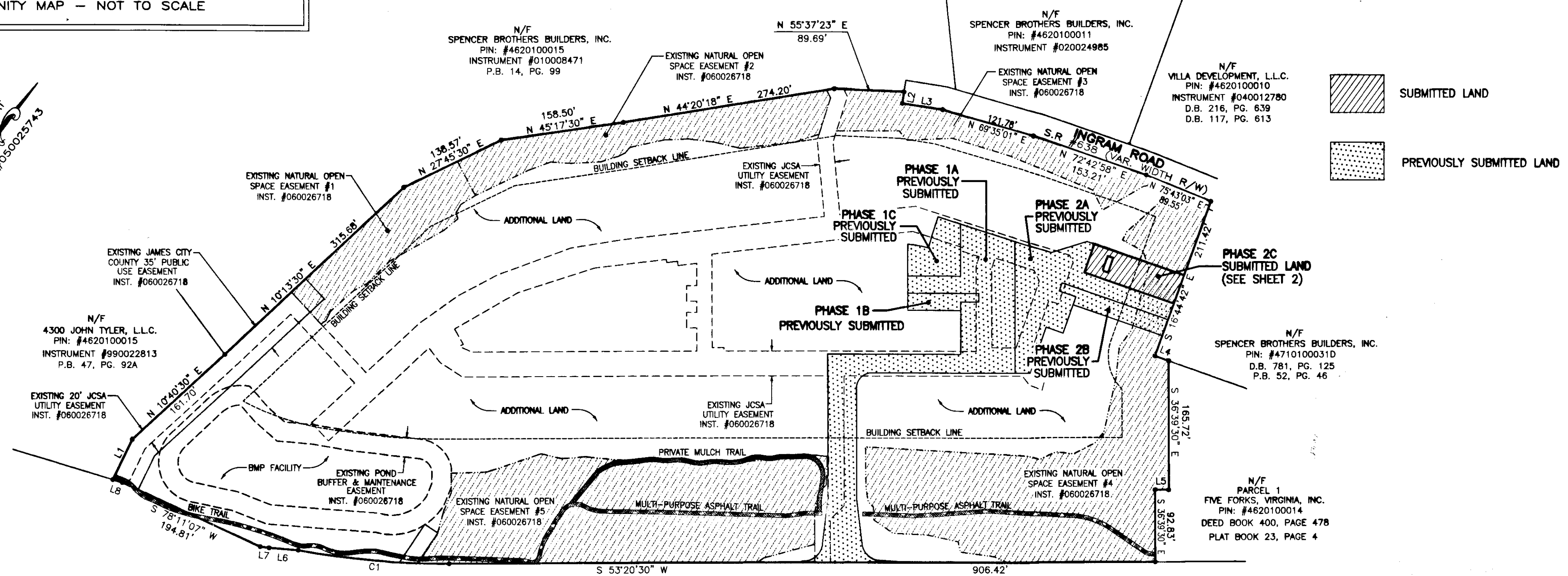


AREA TABLE

PARCEL	SQ. FT.	ACRES
PHASE 2C SUBMITTED LAND	4,567	0.105
PREVIOUSLY SUBMITTED LAND	45,676	1.048
ADDITIONAL LAND	602,993	13.843
TOTAL	653,236	14.996

PLAT OF
PHASE 2C
GOVERNOR'S GROVE AT FIVE FORKS
 A CONDOMINIUM
 LOCATED IN THE BERKELEY DISTRICT
 JAMES CITY COUNTY, VIRGINIA
 DATE: 01/23/13 SCALE: 1" = 100' JOB# 06-460
 SHEET 1 OF 2

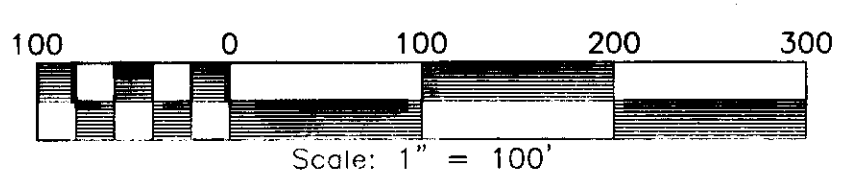
LandTech Resources, Inc.
 Surveying • Engineering • GPS
 205-E Bulfinch Blvd. Williamsburg, VA 23188
 Phone: (757) 565-1677 Fax: (757) 565-0782
 web: landtechresources.com



SUBMITTED LAND
 PREVIOUSLY SUBMITTED LAND

GENERAL NOTES

1. THIS PLAT WAS PRODUCED WITHOUT A TITLE REPORT AND MAY NOT REFLECT ALL MATTERS AFFECTING PROPERTY.
2. THIS PROPERTY APPEARS TO FALL IN ZONE "X" AS SHOWN ON COMMUNITY PANEL 51095C0205C DATED SEPTEMBER 28, 2007.
3. ALL UNITS TO BE SERVED BY PUBLIC WATER AND SEWER.
4. ALL LAND AND IMPROVEMENTS OUTSIDE OF BUILDINGS AND WITHIN PHASE LIMITS SHALL BE KNOWN AS COMMON ELEMENT EXCEPT FOR LIMITED COMMON ELEMENTS DESIGNATED ON PLAT AND BUILDING PLANS.
5. THIS PARCEL OF LAND WAS CONVEYED TO LEGACY GOVERNOR'S GROVE, LLC BY DEED RECORDED IN INSTRUMENT #090022562.
6. THE STREETS WITHIN THIS CONDOMINIUM SHALL BE KNOWN AS COMMON ELEMENT AND NOT A PUBLIC DEDICATED RIGHT-OF-WAY.
7. PHASE 2C IS SUBMITTED LAND. THE REMAINING PROPERTY HAS BEEN PREVIOUSLY SUBMITTED OR ADDITIONAL LAND. ALL ADDITIONAL LAND AND ALL COMMON ELEMENTS ARE WITHDRAWABLE LAND.
8. PROFFERED COVENANTS, RESTRICTIONS, AND CONDITIONS AFFECTING THIS PROPERTY HAVE BEEN RECORDED AS INST. #050019045.
9. THE LOCATION OF THE PRIVATE MULCH TRAIL AND THE ASPHALT MULTI-PURPOSE TRAIL ARE APPROXIMATE ONLY AND SUBJECT TO CHANGE.



JOHN TYLER HIGHWAY
 STATE ROUTE #5
 (VARIABLE WIDTH PUBLIC R/W)

City of Williamsburg & County of James City
 Circuit Court: This PLAT was recorded on
 21 Jan 2013
 at 9:43 AM/PM, PG. PG.
 Document # 130003122
 BETSY B. WOOLRIDGE, CLERK
Betsy Woolridge, Dep. Clerk

CURVE TABLE

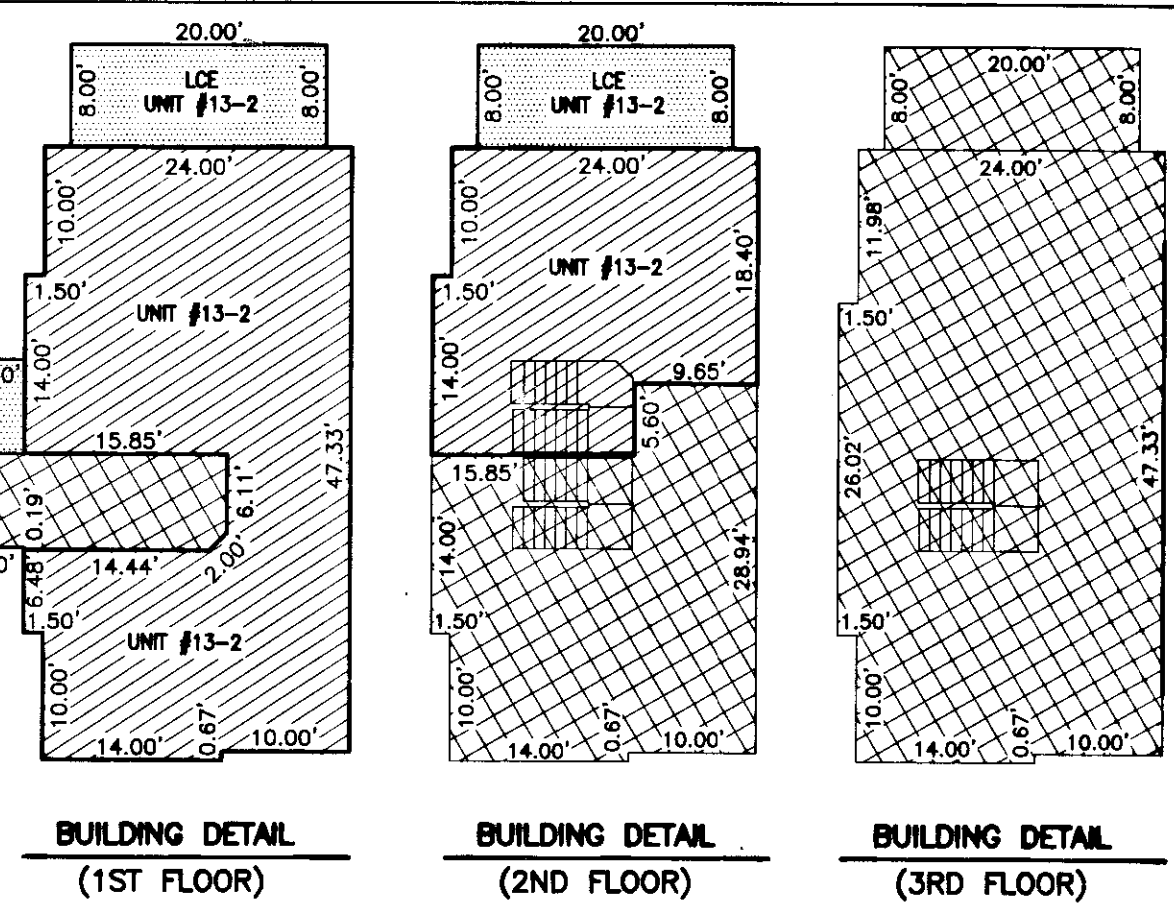
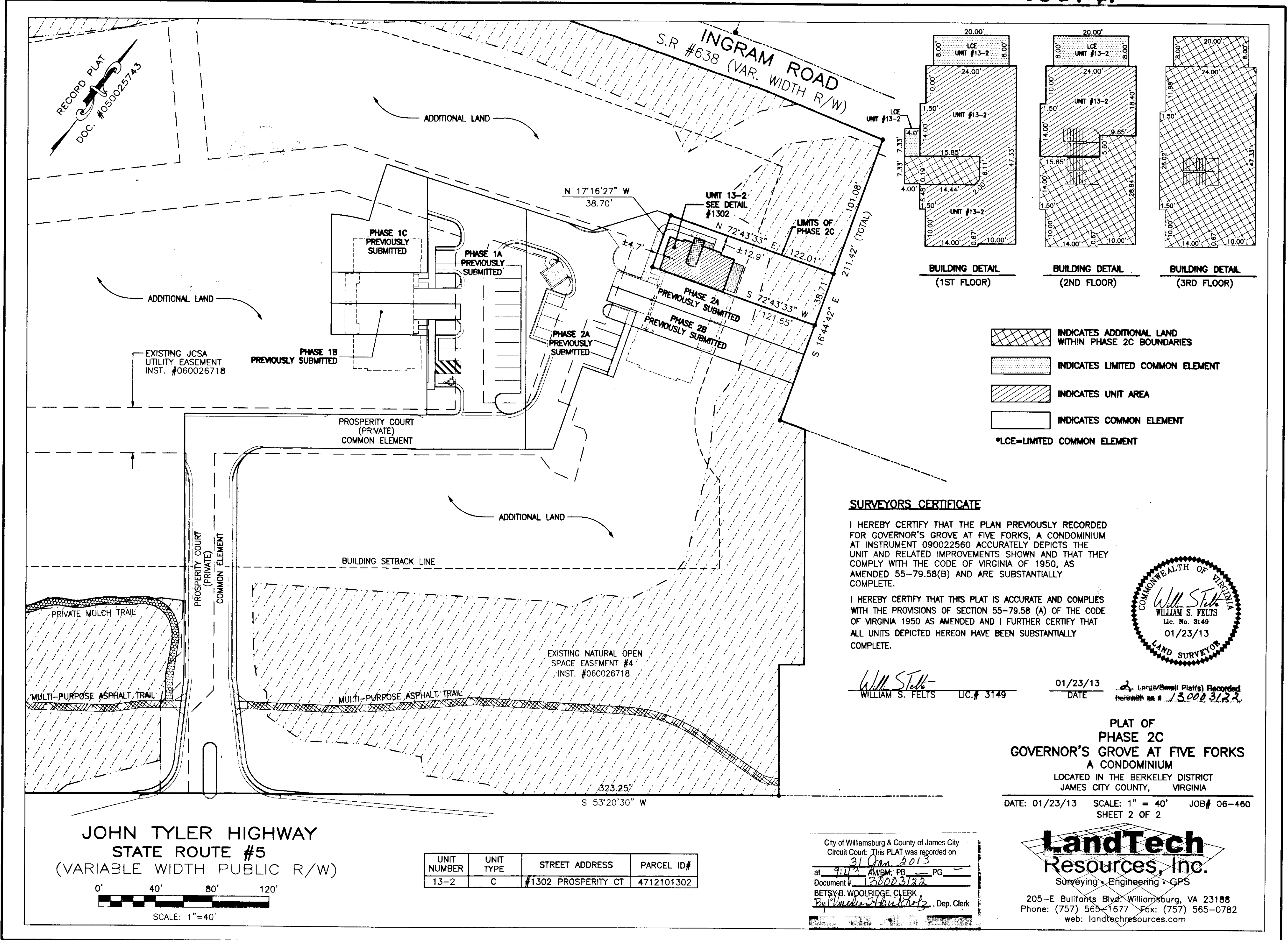
NO.	DELTA	CHORD BEARING	TANGENT	RADIUS	ARC	CHORD
C1	10°00'21"	S 58°20'41" W	97.69'	1116.00'	194.89'	194.64'
C2	84°01'13"	N 85°30'40" W	22.07'	24.50'	35.93'	32.79'
C3	90°00'00"	N 08°20'30" E	20.00'	20.00'	31.42'	28.28'

LINE TABLE

NO.	DIRECTION	DISTANCE
L1	N 10°44'30" W	57.40'
L2	S 27°48'08" E	15.00'
L3	N 62°11'52" E	52.25'
L4	N 73°15'18" E	18.75'
L5	S 53°20'30" W	17.63'
L6	S 58°14'37" W	37.63'
L7	S 60°24'36" W	11.43'
L8	S 70°12'23" W	12.96'
L9	N 17°16'27" W	11.00'
L10	S 72°43'33" W	22.50'
L11	N 17°16'27" W	11.00'

2 Large/Small Plats Recorded herewith as # 130003122

130003122



- INDICATES ADDITIONAL LAND WITHIN PHASE 2C BOUNDARIES
 - INDICATES LIMITED COMMON ELEMENT
 - INDICATES UNIT AREA
 - INDICATES COMMON ELEMENT
- *LCE=LIMITED COMMON ELEMENT

SURVEYORS CERTIFICATE

I HEREBY CERTIFY THAT THE PLAN PREVIOUSLY RECORDED FOR GOVERNOR'S GROVE AT FIVE FORKS, A CONDOMINIUM AT INSTRUMENT 090022560 ACCURATELY DEPICTS THE UNIT AND RELATED IMPROVEMENTS SHOWN AND THAT THEY COMPLY WITH THE CODE OF VIRGINIA OF 1950, AS AMENDED 55-79.58(B) AND ARE SUBSTANTIALLY COMPLETE.

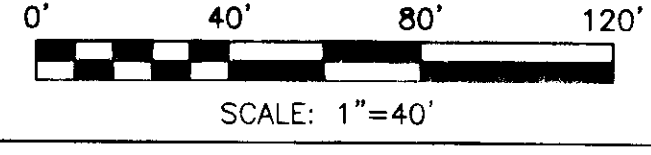
I HEREBY CERTIFY THAT THIS PLAT IS ACCURATE AND COMPLIES WITH THE PROVISIONS OF SECTION 55-79.58 (A) OF THE CODE OF VIRGINIA 1950 AS AMENDED AND I FURTHER CERTIFY THAT ALL UNITS DEPICTED HEREON HAVE BEEN SUBSTANTIALLY COMPLETE.



William S. Felts
WILLIAM S. FELTS LIC.# 3149
DATE: 01/23/13
2 Large/Small Plat(s) Recorded
herewith as # 130003122

PLAT OF
PHASE 2C
GOVERNOR'S GROVE AT FIVE FORKS
A CONDOMINIUM
LOCATED IN THE BERKELEY DISTRICT
JAMES CITY COUNTY, VIRGINIA
DATE: 01/23/13 SCALE: 1" = 40' JOB# 06-480
SHEET 2 OF 2

JOHN TYLER HIGHWAY
STATE ROUTE #5
(VARIABLE WIDTH PUBLIC R/W)



UNIT NUMBER	UNIT TYPE	STREET ADDRESS	PARCEL ID#
13-2	C	#1302 PROSPERITY CT	4712101302

City of Williamsburg & County of James City
Circuit Court: This PLAT was recorded on
31 Jan 2013
at 9:43 AM, PM PG
Document # 130003122
BETSY B. WOOLRIDGE, CLERK
By *William S. Felts*, Dep. Clerk

LandTech Resources, Inc.
Surveying - Engineering - GPS
205-E Bullfants Blvd. Williamsburg, VA 23188
Phone: (757) 565-1677 Fax: (757) 565-0782
web: landtechresources.com