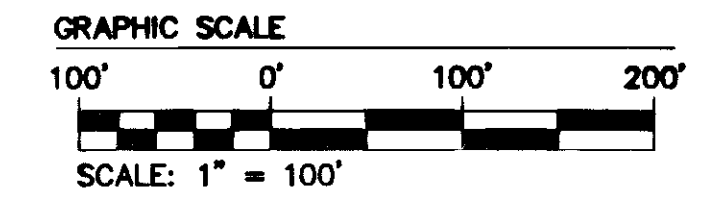
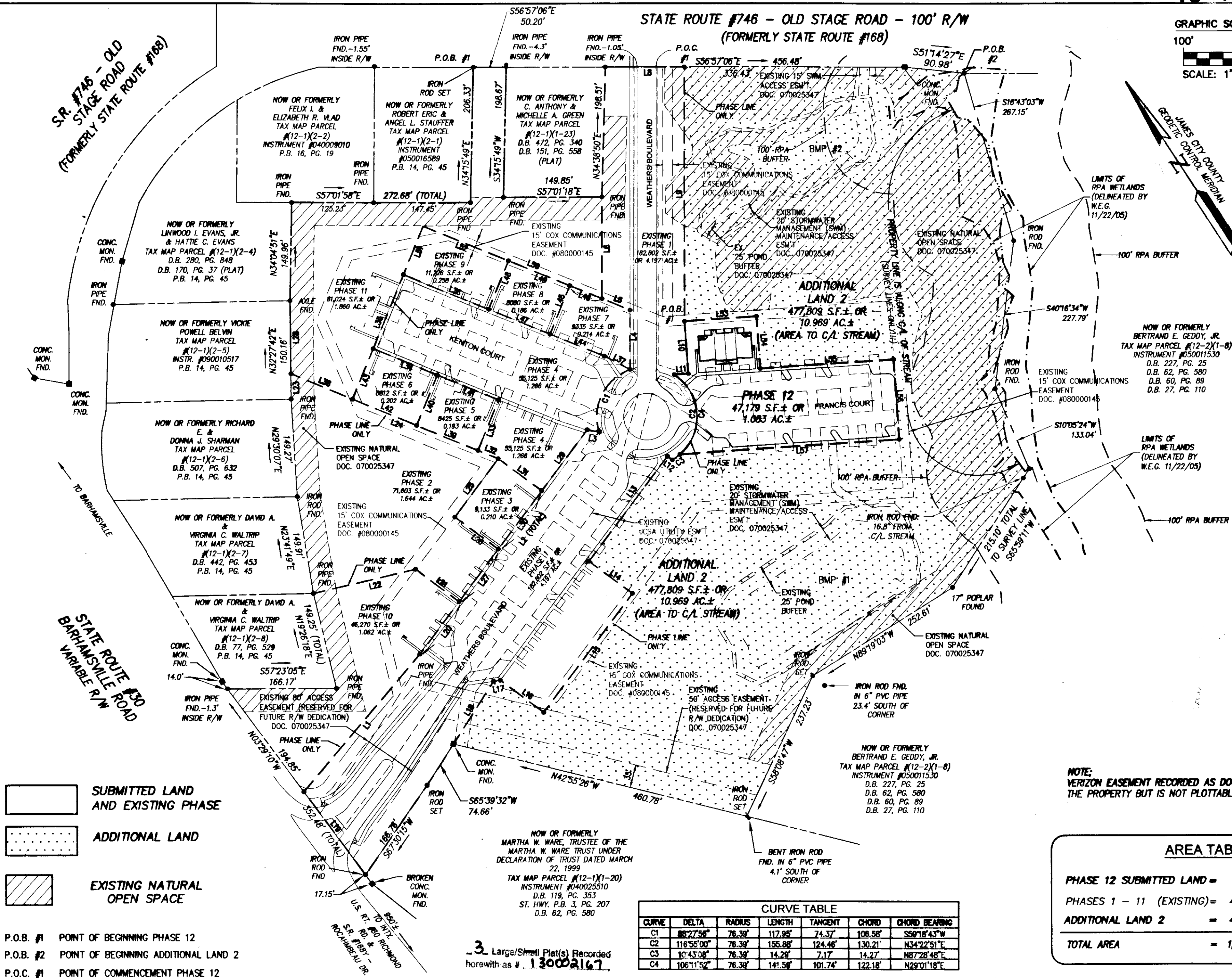


13002167

STATE ROUTE #746 - OLD STAGE ROAD - 100' R/W  
(FORMERLY STATE ROUTE #168)



LINE	BEARING	LENGTH
L1	N73°08'04"E	275.48'
L2	N69°48'47"E	426.79'
L3	S45°25'20"E	18.77'
L4	S33°04'56"W	80.83'
L5	S34°42'41"E	46.25'
L6	S33°02'40"W	155.17'
L7	S56°57'08"E	120.06'
L8	S33°02'40"W	368.47'
L9	S29°01'18"W	80.00'
L10	N60°58'42"E	21.54'
L11	N20°11'13"W	9.22'
L12	S69°48'47"W	200.00'
L13	S20°11'13"E	82.50'
L14	S69°48'47"W	226.22'
L15	N20°11'13"W	82.50'
L16	N65°11'4"W	10.36'
L17	N65°39'32"W	113.28'
L18	N03°29'10"W	157.63'
L19	S69°48'47"W	100.00'
L20	N20°11'13"W	82.50'
L21	N32°27'42"E	38.62'
L22	S34°42'41"E	341.49'
L23	N32°27'42"E	110.70'
L24	N69°48'47"E	110.70'
L25	N20°11'13"W	82.50'
L26	S69°48'47"W	100.00'
L27	N32°27'42"E	111.54'
L28	S69°48'47"W	118.00'
L29	S69°48'47"W	110.70'
L30	N20°11'13"W	82.50'
L31	N34°42'41"W	33.34'
L32	S34°42'41"E	105.63'
L33	S55°17'19"W	285.59'
L34	S34°42'41"E	140.32'
L35	N29°24'44"W	44.79'
L36	N34°42'41"W	101.48'
L37	N34°42'41"W	101.00'
L38	S55°17'19"W	83.41'
L39	S34°42'41"E	101.00'
L40	S55°17'19"W	83.41'
L41	S34°42'41"E	101.00'
L42	N34°42'41"W	105.65'
L43	N55°17'19"E	83.41'
L44	N34°42'41"W	89.50'
L45	S55°17'19"W	80.00'
L46	N34°42'41"W	53.03'
L47	N34°42'41"W	101.00'
L48	S55°17'19"W	80.00'
L49	S34°42'41"E	101.00'
L50	N34°42'41"W	294.36'
L51	N55°17'19"E	80.00'
L52	S34°42'41"E	140.32'
L53	S60°58'42"E	110.20'
L54	S29°01'18"W	80.00'
L55	S60°58'42"E	203.98'
L56	S29°01'18"W	122.18'
L57	N60°58'42"W	335.33'



LEGEND

— SUBMITTED LAND AND EXISTING PHASE

..... ADDITIONAL LAND

/// EXISTING NATURAL OPEN SPACE

P.O.B. #1 POINT OF BEGINNING PHASE 12

P.O.B. #2 POINT OF BEGINNING ADDITIONAL LAND 2

P.O.C. #1 POINT OF COMMENCEMENT PHASE 12

CURVE	DELTA	RADIUS	LENGTH	TANGENT	CHORD	CHORD BEARING
C1	88°27'56"	76.39'	117.95'	74.37'	108.58'	S60°18'43"W
C2	118°55'00"	76.39'	155.88'	124.46'	130.21'	N34°22'51"E
C3	10°43'08"	76.39'	14.29'	7.17'	14.27'	N87°28'48"E
C4	106°11'52"	76.39'	141.59'	101.74'	122.18'	N29°01'18"E

NOTE: VERIZON EASEMENT RECORDED AS DOCUMENT NO. 060007588 AFFECTS THE PROPERTY BUT IS NOT PLOTTABLE

AREA TABULATION

PHASE 12 SUBMITTED LAND = 47,179 S.F. ± OR 1.083 AC. ±

PHASES 1 - 11 (EXISTING) = 491,835 S.F. ± OR 11.291 AC. ±

ADDITIONAL LAND 2 = 477,809 S.F. ± OR 10.969 AC. ±

TOTAL AREA = 1,016,823 S.F. ± OR 23.343 AC. ±

City of Williamsburg & County of James City Circuit Court: This PLAT was recorded on

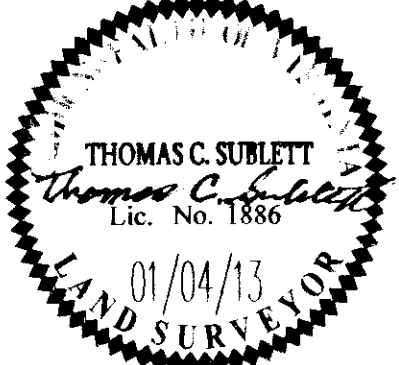
at 1:47 AM/PM, PB PG

Document # 13002167

BETSY B. WOOLRIDGE, CLERK

Dep. Clerk

Rev	Date	Description	Revised By



**AES** CONSULTING ENGINEERS

5248 Old Towne Road, Suite 1  
Williamsburg, Virginia 23188  
Phone: (757) 253-0040  
Fax: (757) 220-8994  
www.aesva.com

PLAT OF CONDOMINIUM  
WEATHERLY AT WHITEHALL  
PHASE 12

STONEHOUSE DISTRICT JAMES CITY COUNTY VIRGINIA

Project Contacts: JFS

Project Number: 9048-00

Scale: 1"=100' Date: 01/04/13

Sheet Number

**2 OF 3**