

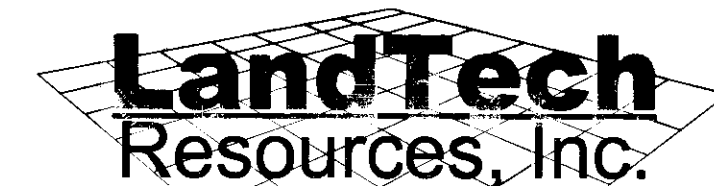
120026325

**NOTES:**

1. WETLANDS AND LAND WITHIN RESOURCE PROTECTION AREAS SHALL REMAIN IN A NATURAL UNDISTURBED STATE EXCEPT FOR THOSE ACTIVITIES PERMITTED BY SECTION 23-7 (c) (1) OF THE JAMES CITY COUNTY CODE.
2. NATURAL OPEN SPACE EASEMENT SHALL REMAIN IN A NATURAL UNDISTURBED STATE EXCEPT FOR THOSE ACTIVITIES REFERENCED IN THE DEED OF EASEMENT.
3. CONSERVATION EASEMENT SIGNS SHOULD MEET REQUIREMENTS AND GUIDELINES AS ESTABLISHED BY JCC ENGINEERING AND RESOURCE PROTECTION DIVISION
4. RPA, RPA BUFFER AND LIMITS OF WETLANDS SHOWN HEREON WERE TAKEN FROM APPROVED SITE PLAN.

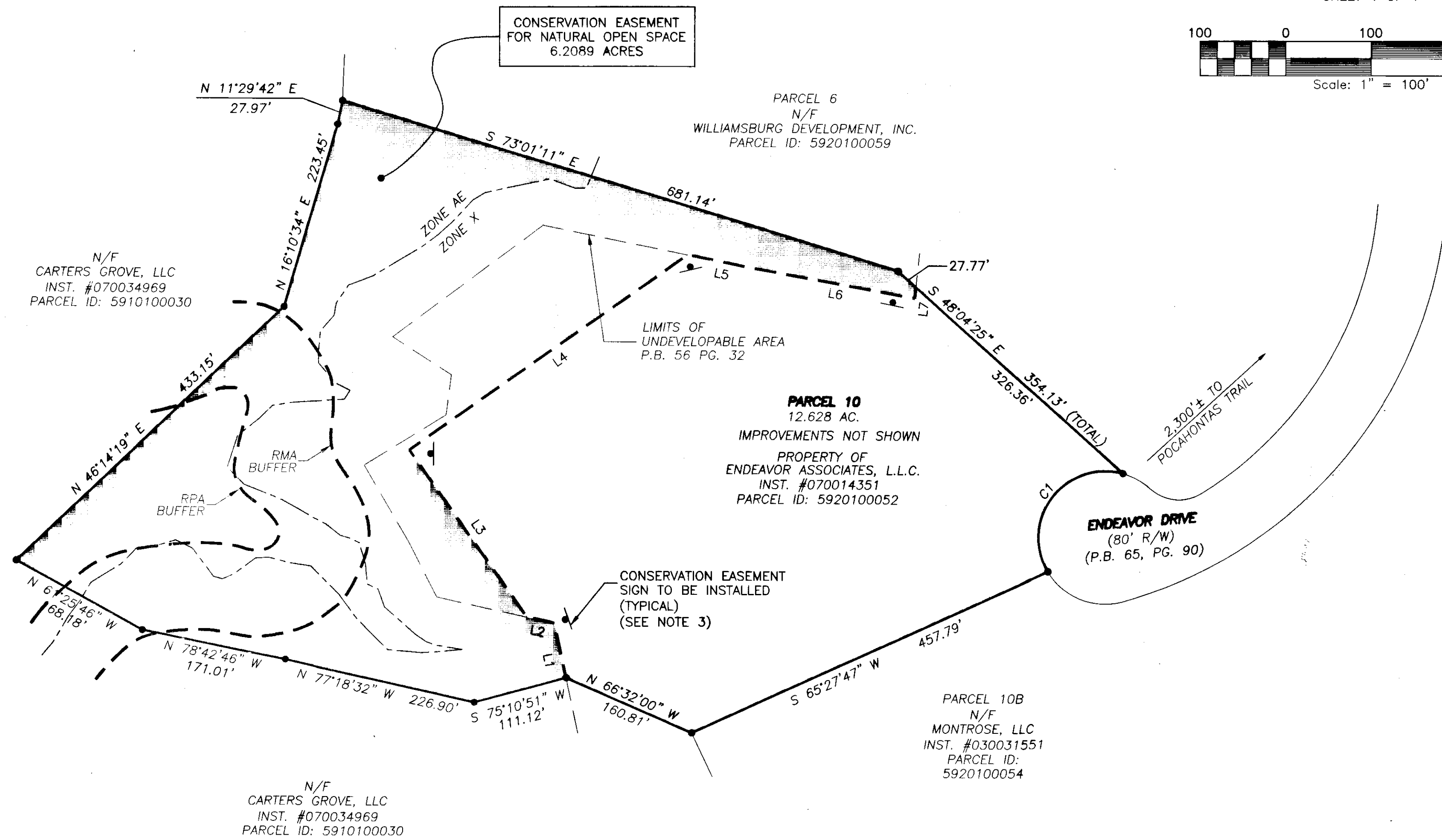
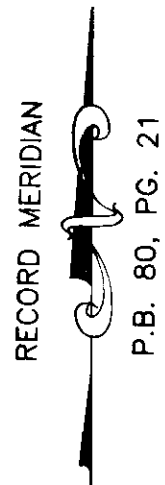
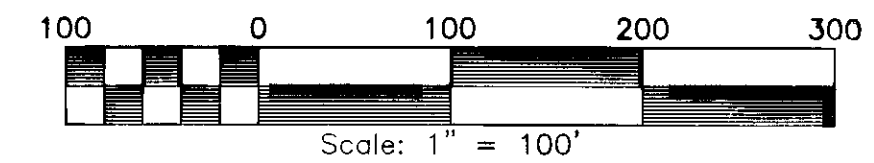
PLAT SHOWING  
**CONSERVATION EASEMENT**  
**PARCEL 10**  
**JAMES RIVER COMMERCE CENTER**

JAMES CITY COUNTY BERKELEY DISTRICT VIRGINIA  
 DATE: 11-12-2012 SCALE: 1"=100' JOB # 12-023



Surveying • Engineering • GPS  
 205 Bulifants Boulevard, Suite E, Williamsburg, Virginia 23188  
 Phone: (757) 565-1677 Fax: (757) 565-0782  
 web: landtechresources.com

SHEET 1 OF 1



EASEMENT LINE TABLE		
LINE	BEARING	DISTANCE
L1	N 12°18'42" W	65.62'
L2	N 77°29'42" W	32.94'
L3	N 35°10'01" W	239.35'
L4	N 54°49'59" E	397.89'
L5	S 78°25'48" E	75.62'
L6	S 79°47'39" E	194.95'
L7	N 05°58'51" E	13.16'

PROPERTY LINE CURVE TABLE					
CURVE	RADIUS	ARC LENGTH	CHORD LENGTH	CHORD BEARING	DELTA ANGLE
C1	78.00'	185.34'	144.71'	S 37°10'13" W	136°08'25"

Large/Small Plat(s) Recorded herewith as # 120026325.



STATE OF VIRGINIA, JAMES CITY COUNTY  
 IN THE CLERKS OFFICE OF THE CIRCUIT COURT FOR THE COUNTY OF JAMES CITY THIS 21<sup>ST</sup> DAY OF December, 2012.  
 THIS PLAT WAS PRESENTED AND ADMITTED TO RECORD AS THE LAW DIRECTS AT 9:50 A.M.  
 INSTRUMENT # 120026325  
 TESTE Betty B. Woodruff, Clerk  
By Claudia H. ...