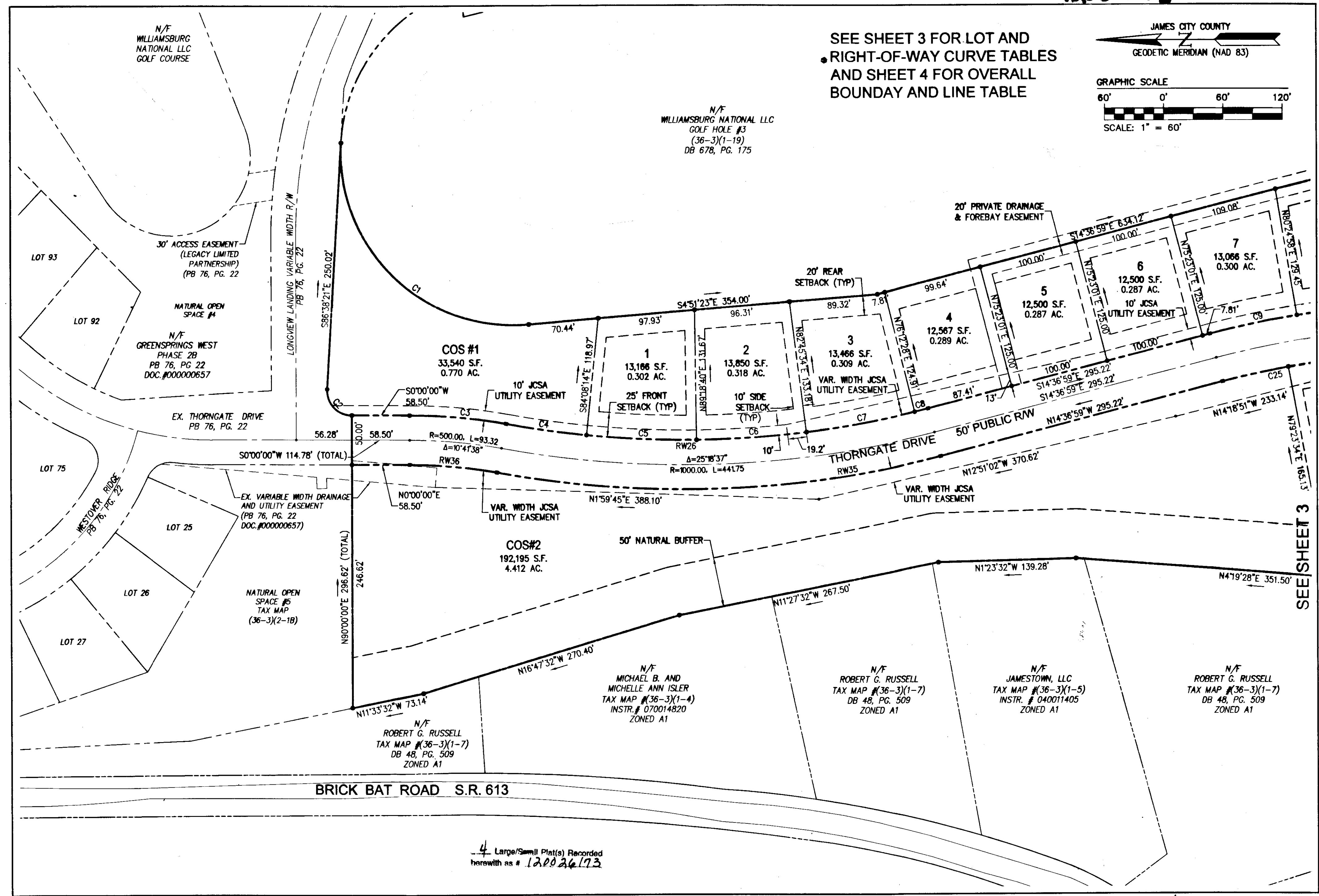
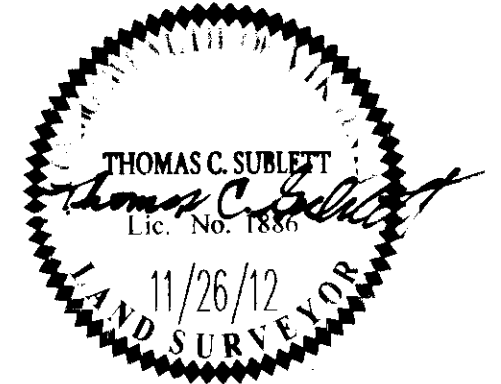


120012673



4 Large/Small Plat(s) Recorded herewith as # 120026173

City of Williamsburg & County of James City Circuit Court: This PLAT was recorded on <u>19 December 2012</u> at <u>11:13</u> AM/PM, PB <u>PG</u> Document # <u>120026173</u>	
BETSY B. WOOLRIDGE, CLERK <i>Betsy Woolridge</i> , Dep. Clerk	
1	11/26/2012
Rev.	Date
	Description
	Revised By



AES
CONSULTING ENGINEERS
Hampton Roads | Central Virginia | Middle Peninsula

5248 Olde Towne Road, Suite 1
Williamsburg, Virginia 23188
Phone: (757) 253-0040
Fax: (757) 220-8994
www.aesva.com

PLAT OF SUBDIVISION
GREENSPRINGS WEST
PHASE VII-A
OWNER: JAMESTOWN, L.L.C.
JCC CASE NO.

BERKELEY DISTRICT JAMES CITY COUNTY VIRGINIA

Project Contacts: TCS/RMS	
Project Number: 8856-24	
Scale: 1"=60'	Date: 9/14/12
Sheet Number	
2 OF 4	