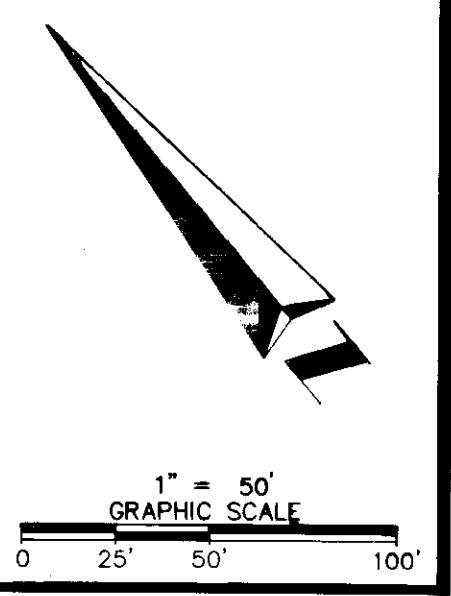


6DId NORTH ARROW & SCALE



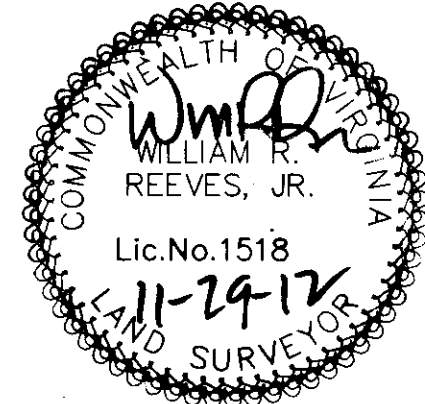
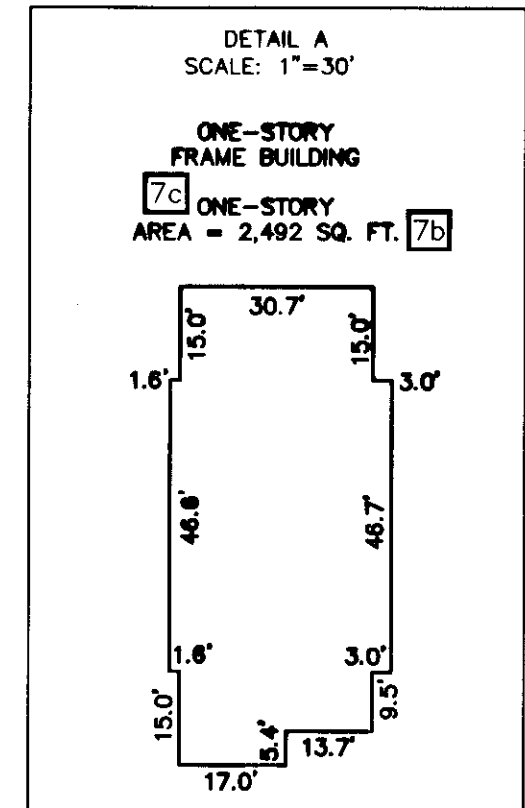
LINE TABLE - TRACT 5

LINE	BEARING	LENGTH
L3	S84°36'54"E	60.87'
L4	S05°23'06"W	57.94'
L5	S26°26'46"E	52.50'
L6	S12°22'00"W	13.00'
L7	N76°46'07"E	21.05'
L8	S71°45'50"W	43.07'
L9	S63°29'43"W	75.00'
L10	N26°30'17"W	61.37'
L11	N84°53'00"W	85.47'
L12	N05°07'00"E	30.00'
L13	S26°30'17"E	32.36'
L14	S53°46'04"E	31.57'

CURVE TABLE - TRACT 5

CURVE	RADIUS	LENGTH	TANGENT	CHORD	BEARING	DELTA
C1	5.00'	7.85'	5.00'	7.07'	S32°38'00"E	90°00'00"
C2	137.50'	26.45'	13.27'	26.41'	S83°08'38"E	11°01'17"
C3	35.00'	49.81'	30.18'	45.71'	N47°53'07"W	81°32'21"
C4	87.50'	17.05'	8.55'	17.03'	S12°41'57"E	11°10'02"
C5	5.00'	7.41'	4.58'	6.75'	S60°45'25"E	84°56'55"
C6	164.50'	55.58'	28.06'	55.32'	N03°33'07"W	19°21'36"
C7	63.50'	90.30'	54.69'	82.88'	N46°51'59"E	81°28'32"
C8	132.50'	118.80'	63.73'	114.86'	S61°55'08"W	51°22'17"
C9	132.50'	108.11'	57.27'	105.14'	S12°51'26"W	46°45'03"
C10	63.50'	91.19'	55.47'	83.55'	N30°37'24"E	82°16'33"
C11	261.50'	37.74'	18.90'	37.71'	S67°37'47"W	8°16'11"
C12	175.00'	143.51'	76.06'	139.52'	N61°12'50"W	46°59'06"
C13	350.00'	98.02'	49.33'	97.70'	S45°44'41"E	16°02'46"

6Dvi ALTA/ACSM LAND TITLE SURVEY
 OF+
 TRACT 5 - DRIVING RANGE, GOLF CLUB & PRO SHOP
 JAMES CITY COUNTY WILLIAMSBURG, VA



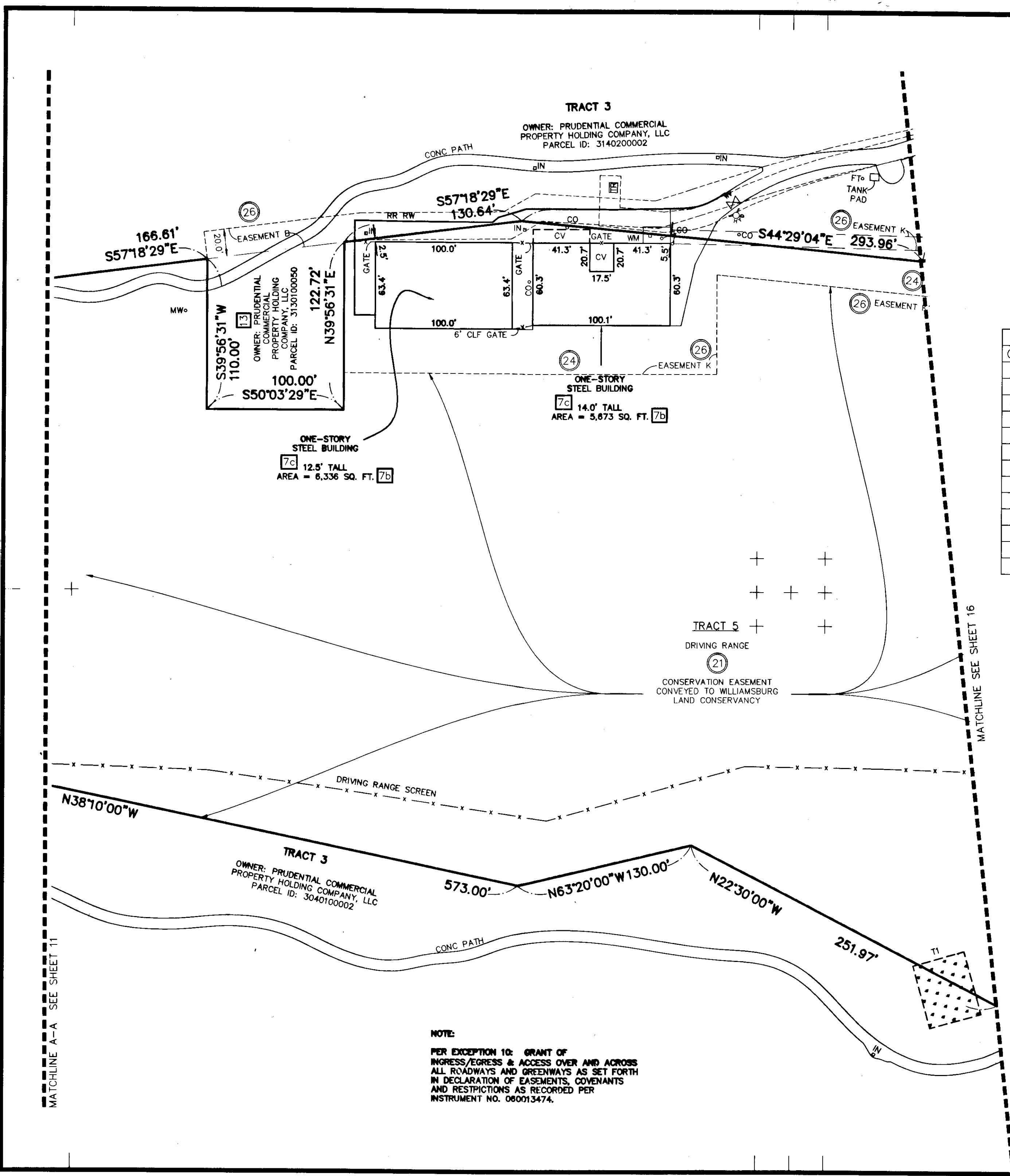
21. Large Scale Plat(s) Recorded
 herewith as # 120025060.

DATE	REVISIONS	TECH	SCALE:
09/04/12	ADDED NEW TITLE	CD	1" = 50'

City of Williamsburg & County of James City
 Circuit Court: This PLAT was recorded on
 4.4.12 AM/PM: PB - PG
 Document # 120025060
 BETSY B. WOOLRIDGE CLERK
 By: [Signature] Dep. Clerk

DRAWN BY/FIELD CREW:
 CD/PW/ML/W
 APPROVED BY:
 JS
 DRAWING FILE NAME:
 1200743 240 FORT
 COLONY DR.,
 WILLIAMSBURG, VA.DWG

ASMA AMERICAN SURVEYING & MAPPING INC.
 3191 MAGUIRE BLVD., SUITE 200
 ORLANDO, FLORIDA 32803
 www.asma-surveying.com



NOTE:
 PER EXCEPTION 10: GRANT OF INGRESS/EGRESS & ACCESS OVER AND ACROSS ALL ROADWAYS AND GREENWAYS AS SET FORTH IN DECLARATION OF EASEMENTS, COVENANTS AND RESTRICTIONS AS RECORDED PER INSTRUMENT NO. 080013474.

MATCHLINE A-A SEE SHEET 11

MATCHLINE SEE SHEET 16