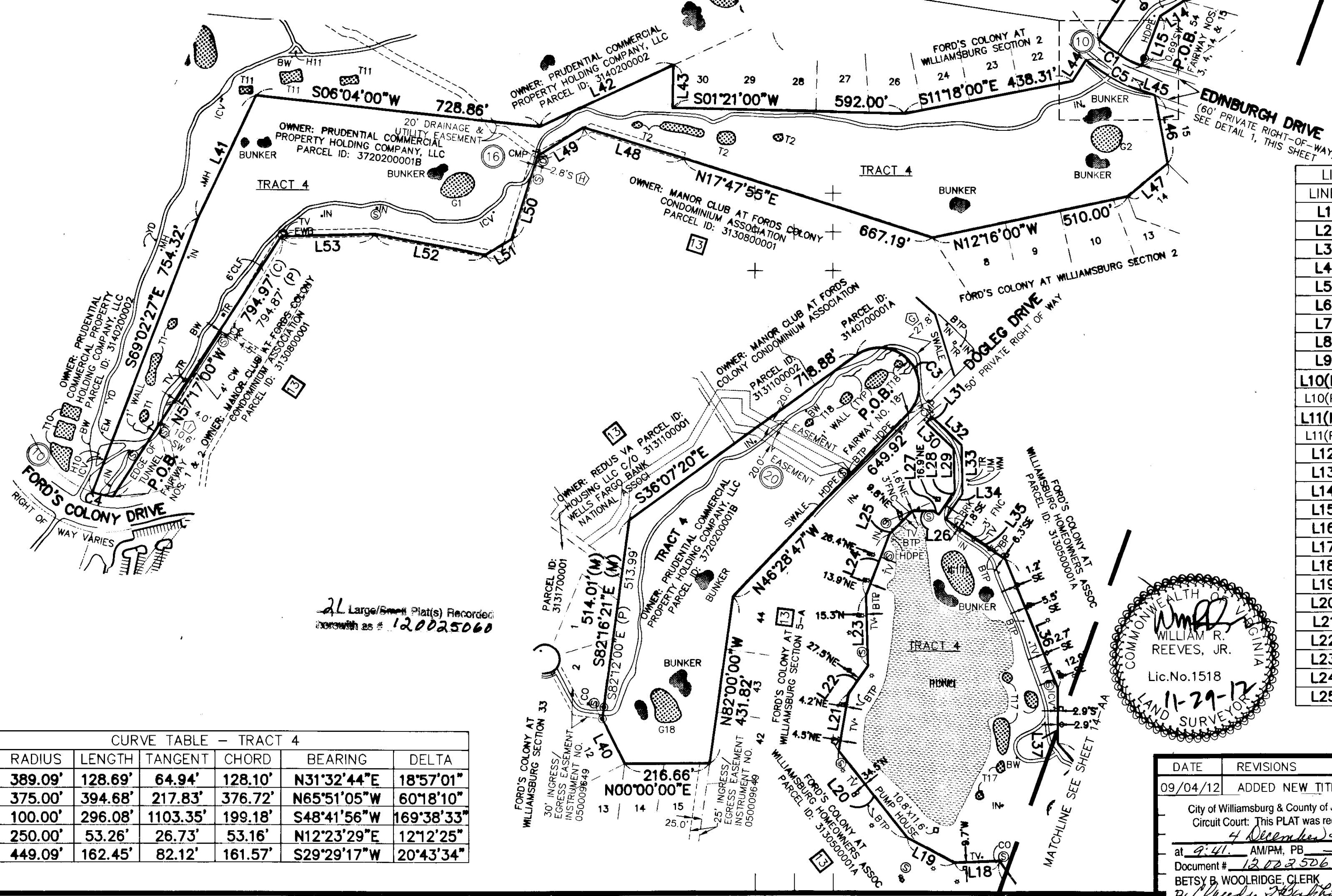
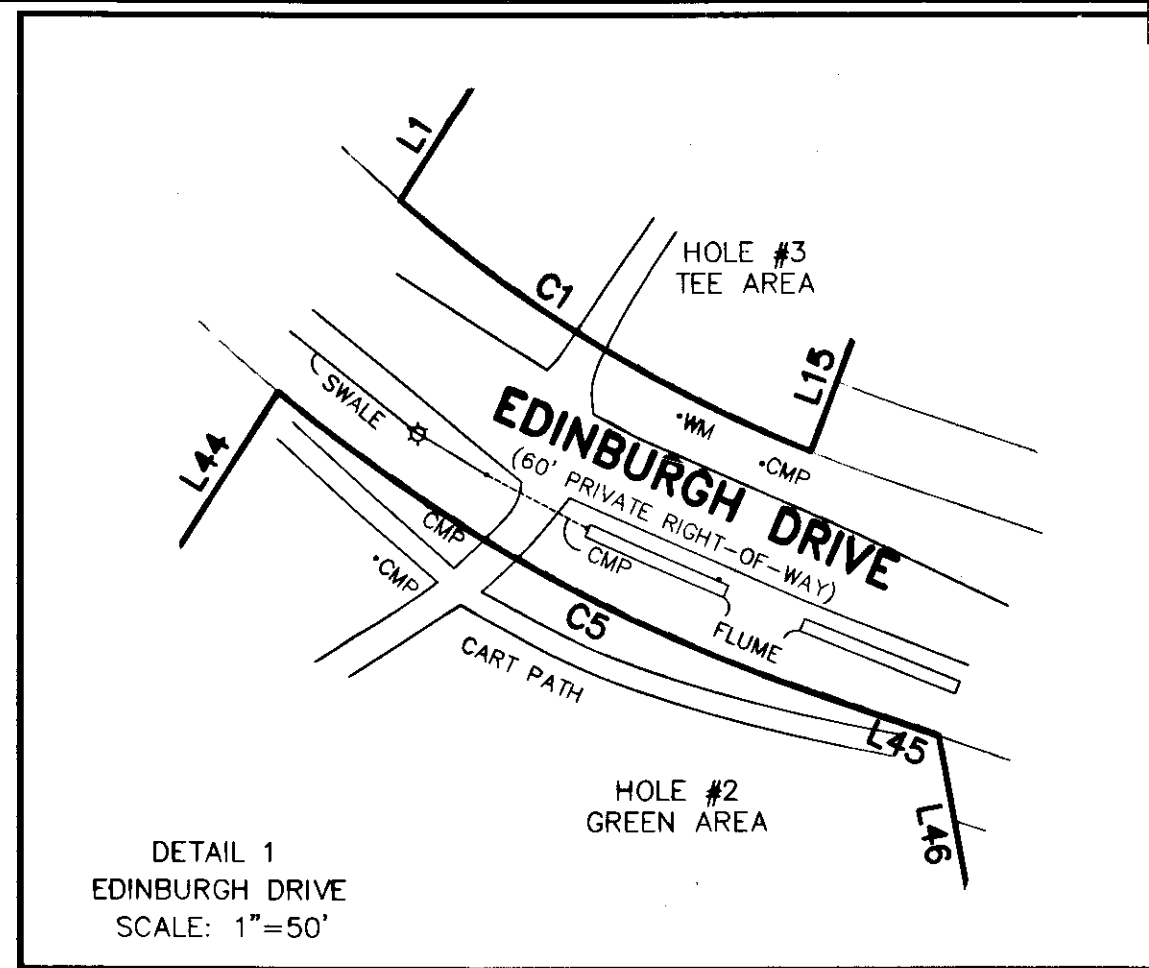
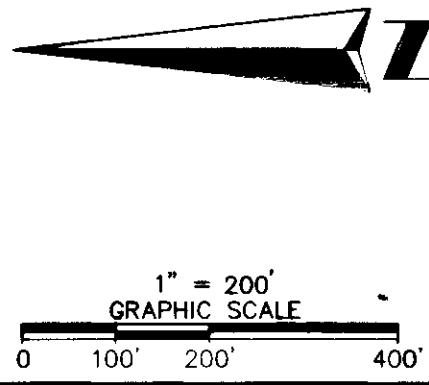


5D1a NORTH ARROW & SCALE

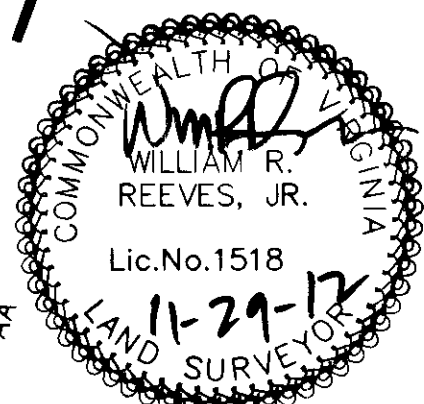


LINE TABLE - TRACT 4

| LINE | BEARING | LENGTH |
|--------|-------------|---------|
| L1 | S57°40'43"E | 236.43' |
| L2 | S01°04'25"W | 218.67' |
| L3 | S67°06'40"W | 309.64' |
| L4 | S43°41'00"W | 142.00' |
| L5 | S36°10'00"W | 203.00' |
| L6 | N21°34'58"E | 340.00' |
| L7 | S62°14'36"E | 242.23' |
| L8 | S51°18'00"E | 260.03' |
| L9 | S83°27'37"E | 204.14' |
| L10(M) | S71°12'23"E | 120.32' |
| L10(P) | S71°23'00"E | 120.00' |
| L11(M) | N18°36'22"E | 144.66' |
| L11(P) | N18°37'00"E | 145.00' |
| L12 | N09°55'57"E | 271.24' |
| L13 | N64°42'00"E | 360.00' |
| L14 | N32°55'50"W | 71.72' |
| L15 | N69°38'47"W | 136.10' |
| L16 | N25°06'00"E | 301.94' |
| L17 | N14°38'00"W | 305.00' |
| L18 | N02°28'00"W | 115.04' |
| L19 | N28°04'00"E | 136.00' |
| L20 | N51°54'00"E | 283.50' |
| L21 | S80°17'01"E | 148.00' |
| L22 | S55°30'58"E | 88.40' |
| L23 | N88°22'00"E | 180.00' |
| L24 | S69°08'00"E | 168.00' |
| L25 | S45°45'00"E | 83.12' |

CURVE TABLE - TRACT 4

| CURVE | RADIUS | LENGTH | TANGENT | CHORD | BEARING | DELTA |
|-------|---------|---------|----------|---------|-------------|------------|
| C1 | 389.09' | 128.69' | 64.94' | 128.10' | N31°32'44"E | 18°57'01" |
| C2 | 375.00' | 394.68' | 217.83' | 376.72' | N65°51'05"W | 60°18'10" |
| C3 | 100.00' | 296.08' | 1103.35' | 199.18' | S48°41'56"W | 169°38'33" |
| C4 | 250.00' | 53.26' | 26.73' | 53.16' | N12°23'29"E | 12°12'25" |
| C5 | 449.09' | 162.45' | 82.12' | 161.57' | S29°29'17"W | 20°43'34" |



| DATE | REVISIONS | TECH | SCALE: |
|--|-----------------|------|--|
| 09/04/12 | ADDED NEW TITLE | CD | 1" = 200' |
| City of Williamsburg & County of James City Circuit Court: This PLAT was recorded on 4 December 2012 at 9:41 AM/PM, PG 1 | | | DRAWN BY/FIELD CREW: CD/PW/ML/W |
| Document # 120025060 | | | APPROVED BY: JS |
| BETSY B. WOOLRIDGE, CLERK | | | DRAWING FILE NAME: 1200743 240 FORT COLONY DR., WILLIAMSBURG, VA.DWG |
| Dep. Clerk | | | |

6DVI ALTA/ACSM LAND TITLE SURVEY

OF

TRACT 4 - BLUE HERON 18 HOLE GOLF COURSE
BLUE HERON FAIRWAY NOS. 1, 2, 3, 4, 14, 15, 16, 17 & 18

JAMES CITY COUNTY WILLIAMSBURG, VA

ASMA AMERICAN SURVEYING & MAPPING INC.

3191 MAGUIRE BLVD., SUITE 200 ORLANDO, FLORIDA 32803
PHONE (407) 426-5379 FAX (407) 426-5379