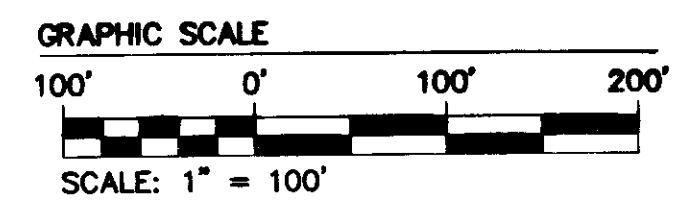
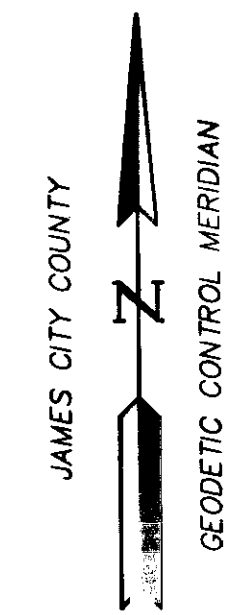
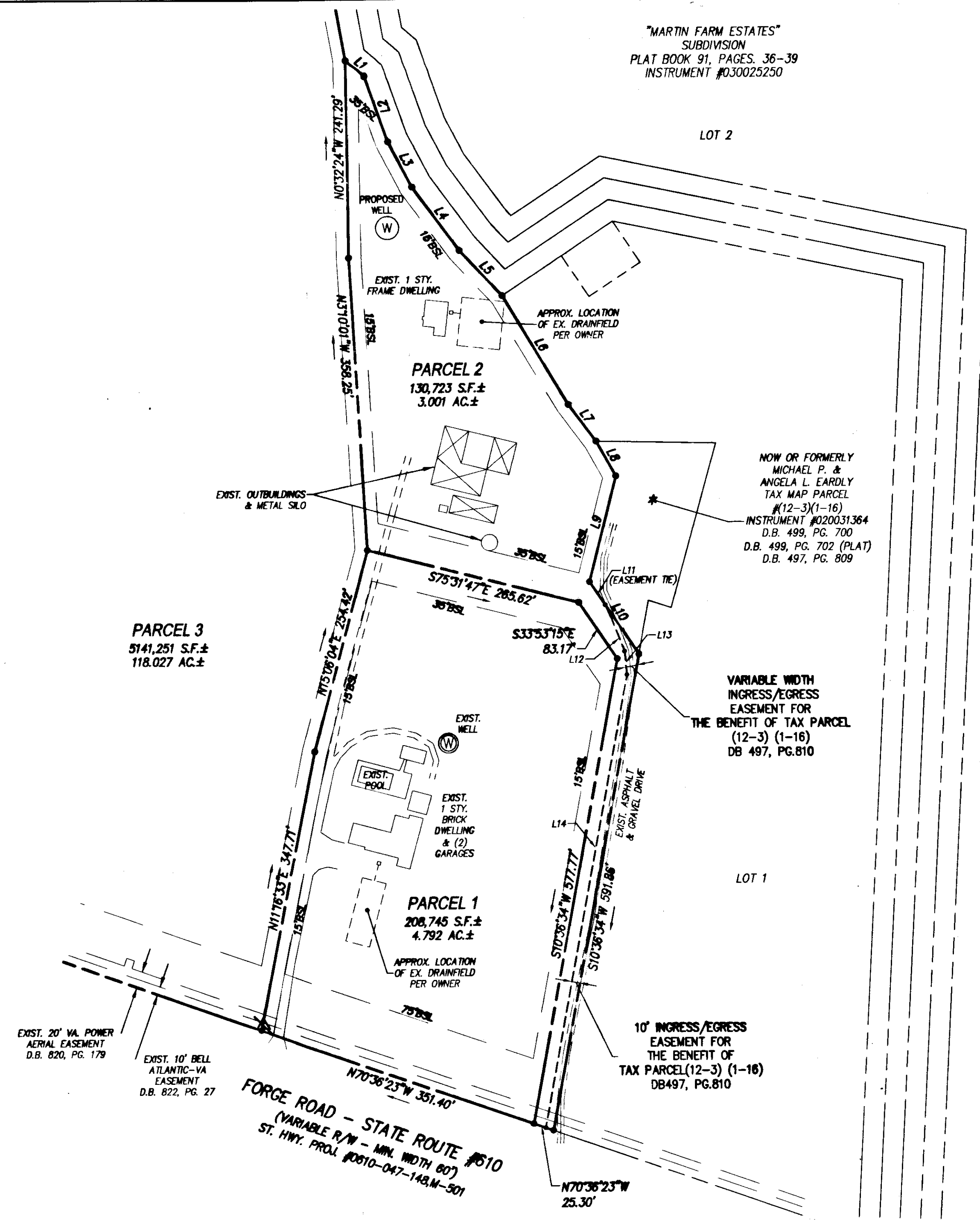


120024981

"MARTIN FARM ESTATES"  
SUBDIVISION  
PLAT BOOK 91, PAGES 36-39  
INSTRUMENT #030025250



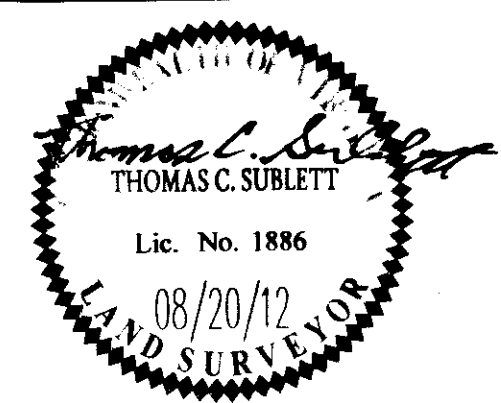
PARCEL LINE TABLE		
LINE	BEARING	LENGTH
L1	S49°01'54"E	30.11'
L2	S19°24'59"E	85.04'
L3	S27°23'36"E	62.44'
L4	S36°16'41"E	97.04'
L5	S42°49'34"E	78.11'
L6	S30°42'46"E	156.04'
L7	S36°33'24"E	55.90'
L8	S29°11'18"E	48.92'
L9	S14°26'42"W	133.25'
L10	S33°53'15"E	108.87'

EASEMENT LINE TABLE		
LINE	BEARING	LENGTH
L11	S33°53'15"E	34.08'
L12	S21°29'54"E	42.74'
L13	S5°13'00"E	28.91'
L14	S10°36'34"W	562.74'

3 Large/Sheet Plat(s) Recorded  
herewith as # 120024981

City of Williamsburg & County of James City  
Circuit Court: This PLAT was recorded on  
3 December 2012  
at 12:37 AM/PM, PB     PG      
Document # 120024981  
BETSY B. WOOLRIDGE, CLERK  
*Betty B. Woolridge*, Dep. Clerk

Rev	Date	Description	Revised By
1	11/1/12	REVISED PER COUNTY COMMENTS	TCS/JS



**NEC**  
CONSULTING ENGINEERS  
5248 Old Towne Road, Suite 1  
Williamsburg, Virginia 23188  
Phone: (757) 253-0040  
Fax: (757) 220-8994  
www.necva.com  
Hampton Roads | Central Virginia | Middle Peninsula

PLAT OF SUBDIVISION  
AND BOUNDARY LINE EXTINGUISHMENT  
3 PARCELS OF LAND CONTAINING 125.820 ACRES±  
ON FORGE ROAD  
OWNED BY: THE MEADOWS FAMILY LIMITED PARTNERSHIP  
STONEHOUSE DISTRICT      JAMES CITY COUNTY      VIRGINIA

Project Contacts:	TCS
Project Number:	9780-01
Scale:	NONE
Date:	08/20/12
Sheet Number	3 of 3