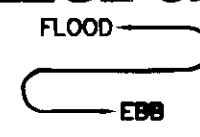


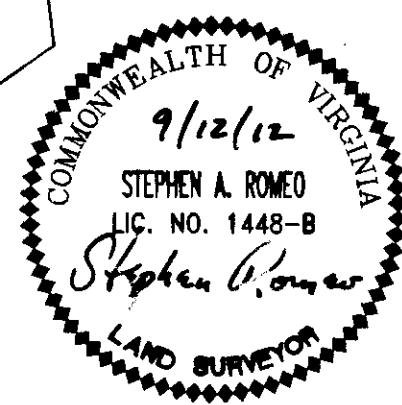
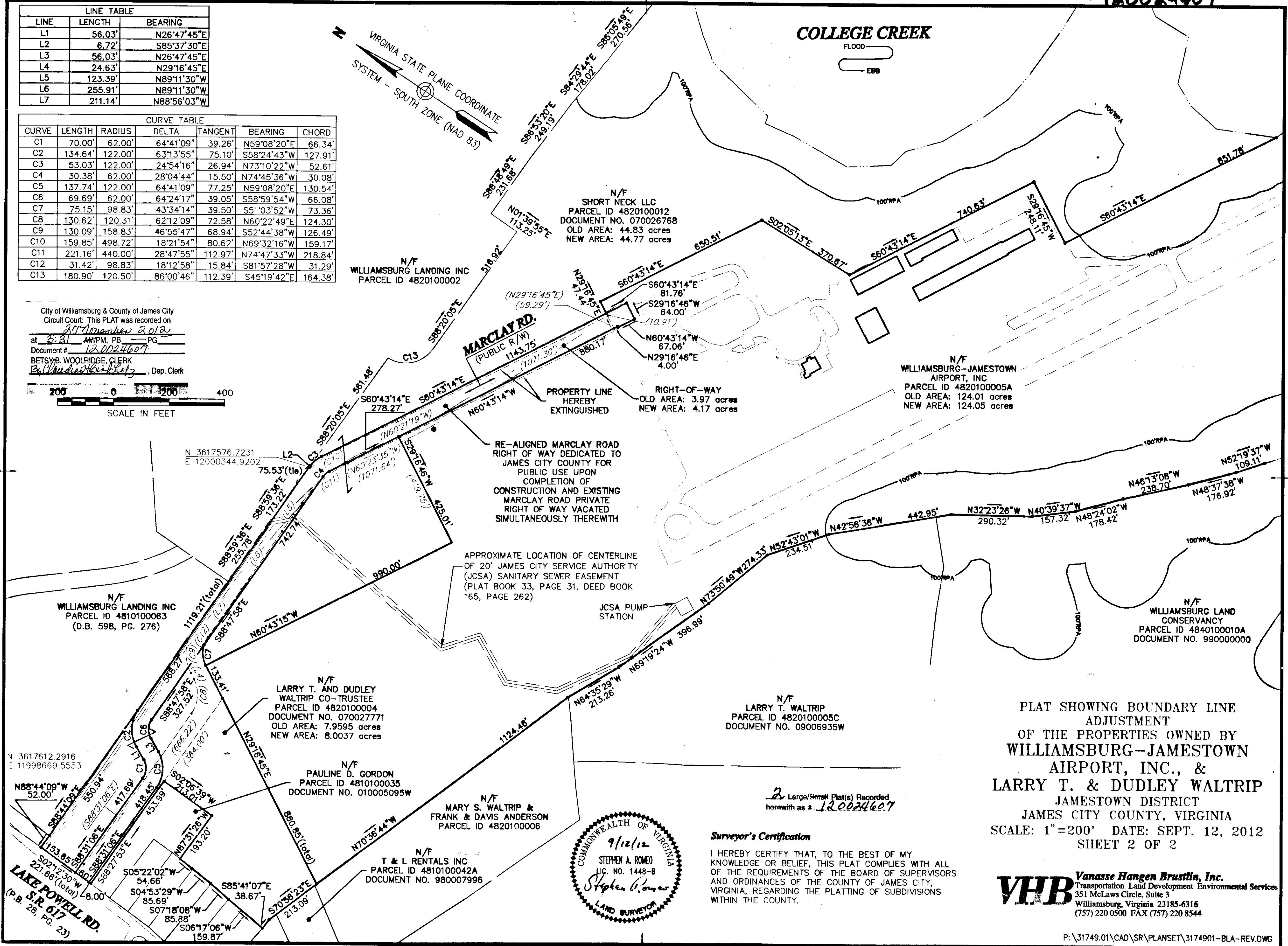
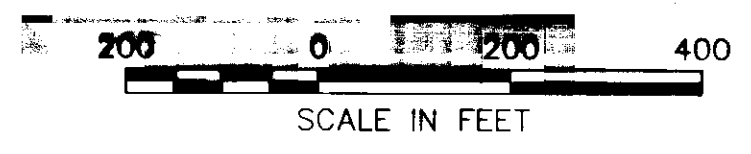
### COLLEGE CREEK



LINE TABLE		
LINE	LENGTH	BEARING
L1	56.03'	N26°47'45"E
L2	6.72'	S85°37'30"E
L3	56.03'	N26°47'45"E
L4	24.63'	N29°16'45"E
L5	123.39'	N89°11'30"W
L6	255.91'	N89°11'30"W
L7	211.14'	N88°56'03"W

CURVE TABLE						
CURVE	LENGTH	RADIUS	DELTA	TANGENT	BEARING	CHORD
C1	70.00'	62.00'	64°41'09"	39.26'	N59°08'20"E	66.34'
C2	134.64'	122.00'	63°13'55"	75.10'	S58°24'43"W	127.91'
C3	53.03'	122.00'	24°54'16"	26.94'	N73°10'22"W	52.61'
C4	30.38'	62.00'	28°04'44"	15.50'	N74°45'36"W	30.08'
C5	137.74'	122.00'	64°41'09"	77.25'	N59°08'20"E	130.54'
C6	69.69'	62.00'	64°24'17"	39.05'	S58°59'54"W	66.08'
C7	75.15'	98.83'	43°34'14"	39.50'	S51°03'52"W	73.36'
C8	130.62'	120.31'	62°12'09"	72.58'	N60°22'49"E	124.30'
C9	130.09'	158.83'	46°55'47"	68.94'	S52°44'38"W	126.49'
C10	159.85'	498.72'	18°21'54"	80.62'	N69°32'16"W	159.17'
C11	221.16'	440.00'	28°47'55"	112.97'	N74°47'33"W	218.84'
C12	31.42'	98.83'	18°12'58"	15.84'	S81°57'28"W	31.29'
C13	180.90'	120.50'	86°00'46"	112.39'	S45°19'42"E	164.38'

City of Williamsburg & County of James City  
 Circuit Court: This PLAT was recorded on  
21 November 2012  
 at 3:31 AM/PM, PB \_\_\_\_\_ PG \_\_\_\_\_  
 Document # 120024607  
 BETSY B. WOOLRIDGE, CLERK  
 By Stephen A. Romeo, Dep. Clerk



**Surveyor's Certification**  
 I HEREBY CERTIFY THAT, TO THE BEST OF MY KNOWLEDGE OR BELIEF, THIS PLAT COMPLIES WITH ALL OF THE REQUIREMENTS OF THE BOARD OF SUPERVISORS AND ORDINANCES OF THE COUNTY OF JAMES CITY, VIRGINIA, REGARDING THE PLATTING OF SUBDIVISIONS WITHIN THE COUNTY.

**PLAT SHOWING BOUNDARY LINE ADJUSTMENT OF THE PROPERTIES OWNED BY WILLIAMSBURG-JAMESTOWN AIRPORT, INC., & LARRY T. & DUDLEY WALTRIP JAMESTOWN DISTRICT JAMES CITY COUNTY, VIRGINIA**  
 SCALE: 1"=200' DATE: SEPT. 12, 2012  
 SHEET 2 OF 2

**VHB Vanasse Hangen Brustlin, Inc.**  
 Transportation Land Development Environmental Services  
 351 McLaws Circle, Suite 3  
 Williamsburg, Virginia 23185-6316  
 (757) 220 0500 FAX (757) 220 8544