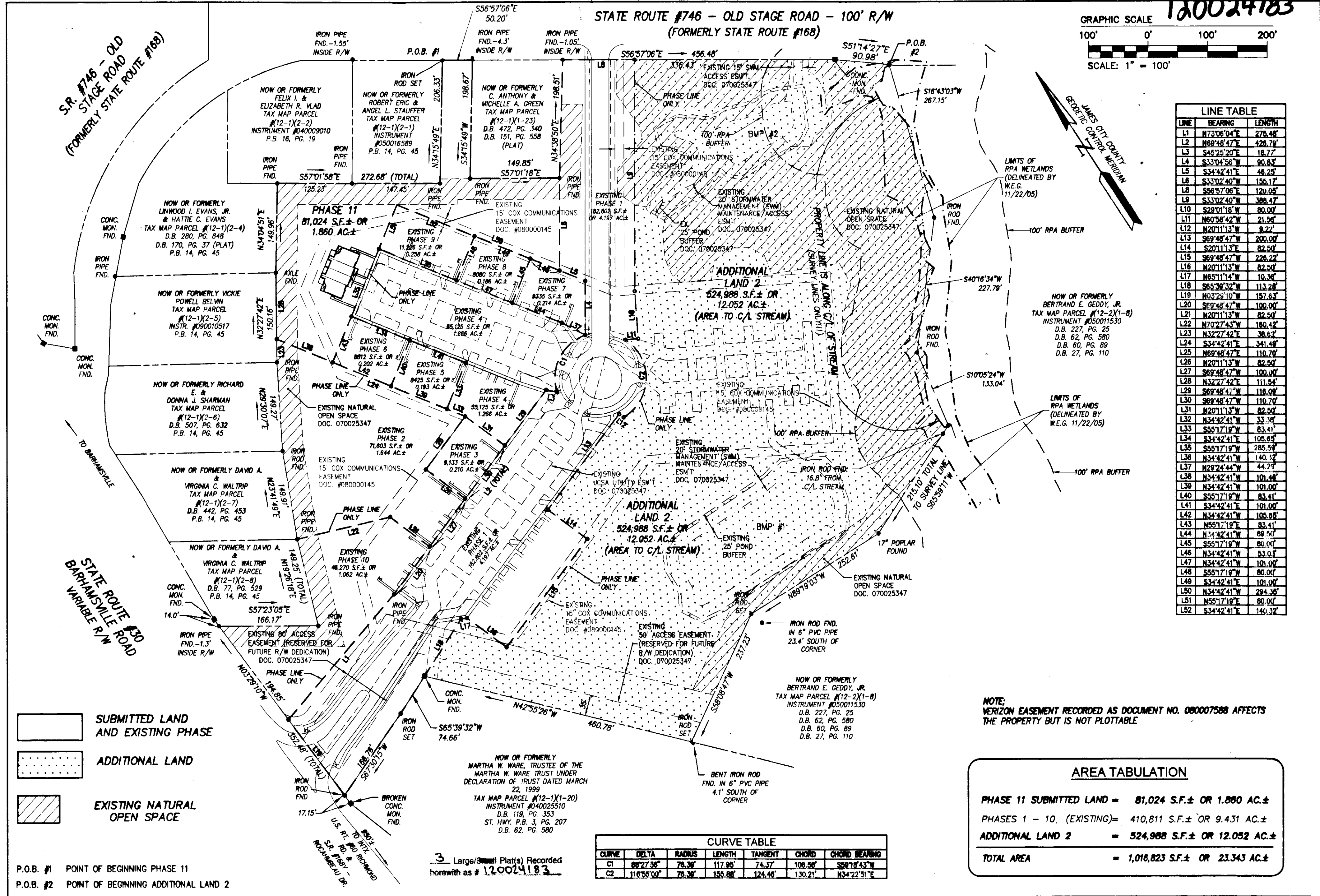
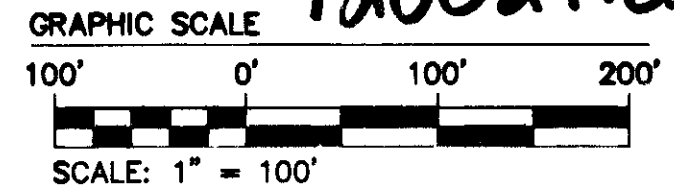


120024183

STATE ROUTE #746 - OLD STAGE ROAD - 100' R/W  
(FORMERLY STATE ROUTE #168)



**LINE TABLE**

LINE	BEARING	LENGTH
L1	N73°08'04"E	275.48'
L2	N69°48'47"E	428.79'
L3	S45°25'20"E	18.77'
L4	S33°04'58"W	90.83'
L5	S34°42'41"E	46.25'
L6	S33°02'40"W	156.17'
L7	S56°57'06"E	120.05'
L8	S33°02'40"W	388.47'
L9	N29°01'18"W	80.00'
L10	N60°58'42"W	21.56'
L11	N20°11'13"W	9.22'
L12	N20°11'13"W	200.00'
L13	S69°48'47"W	228.22'
L14	S20°11'13"E	82.50'
L15	S69°48'47"W	82.50'
L16	N20°11'13"W	10.36'
L17	S69°48'47"W	113.28'
L18	S69°48'47"W	100.00'
L19	N02°11'13"W	157.63'
L20	S69°48'47"W	100.00'
L21	N20°11'13"W	82.50'
L22	N70°27'42"E	180.42'
L23	N32°27'42"E	38.62'
L24	S34°42'41"E	341.48'
L25	N69°48'47"E	110.70'
L26	N20°11'13"W	82.50'
L27	S69°48'47"W	100.00'
L28	N32°27'42"E	111.54'
L29	S69°48'47"W	118.08'
L30	S69°48'47"W	110.70'
L31	N20°11'13"W	82.50'
L32	N34°42'41"W	33.36'
L33	S55°17'19"W	83.41'
L34	S34°42'41"E	105.65'
L35	S55°17'19"W	285.59'
L36	N34°42'41"W	140.32'
L37	N29°24'44"W	44.23'
L38	N34°42'41"W	101.48'
L39	N34°42'41"W	101.00'
L40	S55°17'19"W	83.41'
L41	S34°42'41"E	101.00'
L42	N34°42'41"W	105.65'
L43	N55°17'19"E	83.41'
L44	N34°42'41"W	88.50'
L45	S55°17'19"W	80.00'
L46	N34°42'41"W	53.03'
L47	N34°42'41"W	101.00'
L48	S55°17'19"W	80.00'
L49	S34°42'41"E	101.00'
L50	N34°42'41"W	294.38'
L51	N55°17'19"E	80.00'
L52	S34°42'41"E	140.32'

NOTE: VERIZON EASEMENT RECORDED AS DOCUMENT NO. 080007588 AFFECTS THE PROPERTY BUT IS NOT PLOTTABLE

**AREA TABULATION**

PHASE 11 SUBMITTED LAND	= 81,024 S.F. ± OR 1.860 AC. ±
PHASES 1 - 10, (EXISTING)	= 410,811 S.F. ± OR 9.431 AC. ±
ADDITIONAL LAND 2	= 524,988 S.F. ± OR 12.052 AC. ±
<b>TOTAL AREA</b>	<b>= 1,016,823 S.F. ± OR 23.343 AC. ±</b>

**CURVE TABLE**

CURVE	DELTA	RADIUS	LENGTH	TANGENT	CHORD	CHORD BEARING
C1	88°27'38"	78.39'	117.85'	74.37'	108.98'	S89°18'43"W
C2	118°39'00"	78.39'	155.88'	124.46'	130.21'	N34°22'31"E

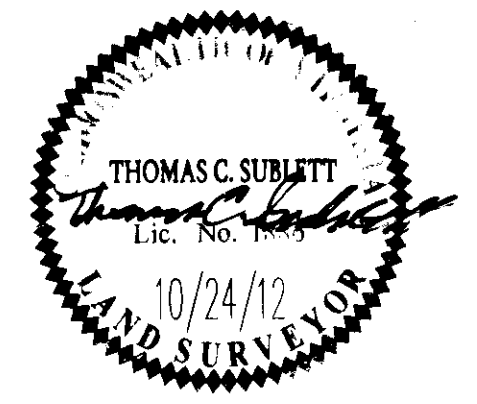
- SUBMITTED LAND AND EXISTING PHASE
- ADDITIONAL LAND
- EXISTING NATURAL OPEN SPACE

P.O.B. #1 POINT OF BEGINNING PHASE 11  
P.O.B. #2 POINT OF BEGINNING ADDITIONAL LAND 2

3 Large/Small Plat(s) Recorded herewith as # 120024183

Rev	Date	Description	Prepared By

City of Williamsburg & County of James City  
Circuit Court: This PLAT was recorded on  
**November 19, 2012**  
at **2:09** PM, PG.   
Document # **120024183**  
**BETSY B. WOOLRIDGE, CLERK**  
*Betsy Woolridge* Dep. Clerk



**NES**  
CONSULTING ENGINEERS  
5248 Old Towne Road, Suite 1  
Williamsburg, Virginia 23188  
Phone: (757) 253-0040  
Fax: (757) 220-8994  
www.nesva.com

**PLAT OF CONDOMINIUM WEATHERLY AT WHITEHALL PHASE 11**  
STONEHOUSE DISTRICT JAMES CITY COUNTY VIRGINIA

Project Contacts: JFS  
Project Number: 9048-09  
Scale: 1"=100' Date: 10/24/12  
Sheet Number: **2 OF 3**