

120024099

CERTIFICATION OF SOURCE OF TITLE

THE PROPERTY SHOWN ON THIS PLAT WAS CONVEYED BY VAJACK, LLC, AND MASSIE CORPORATION TO COLONIAL HERITAGE LLC, A VIRGINIA LIMITED LIABILITY COMPANY BY DEED DATED JANUARY 2, 2002 AND RECORDED IN THE OFFICE OF THE CLERK OF THE CIRCUIT COURT OF THE CITY OF WILLIAMSBURG AND COUNTY OF JAMES CITY AS INSTRUMENT NO. 030000330 ON JANUARY 6, 2003 AND COLONIAL VIRGINIA COUNCIL OF BOY SCOUTS OF AMERICA, INC. BY DEED DATED SEPTEMBER 29, 2004 AND RECORDED IN THE OFFICE OF THE CLERK OF THE CIRCUIT COURT OF THE CITY OF WILLIAMSBURG AND COUNTY OF JAMES CITY AS INSTRUMENT NO. 040024552 ON SEPTEMBER 30, 2004.

OWNER'S CERTIFICATE

THE SUBDIVISION SHOWN ON THIS PLAT IS WITH THE FREE CONSENT AND IN ACCORDANCE WITH THE DESIRE OF THE UNDERSIGNED OWNERS, PROPRIETORS AND OR TRUSTEES.

FOR COLONIAL HERITAGE LLC
GARY VAN ALSTYNE
PRINTED NAME

7/24/12
DATE

CERTIFICATE OF NOTARIZATION

STATE OF VIRGINIA, CITY/COUNTY OF TO-WIT:

Jordan



I, NANCY CARDOZO CAVIN, A NOTARY PUBLIC IN AND FOR THE CITY/COUNTY AND STATE AFORESAID, DO HEREBY CERTIFY THAT THE ABOVE PERSONS WHOSE NAMES ARE SIGNED TO THE FOREGOING WRITING HAVE ACKNOWLEDGED THE SAME BEFORE ME IN THE CITY/COUNTY AND STATE AFORESAID.

GIVEN UNDER MY HAND THIS 24th DAY OF July, 2012.

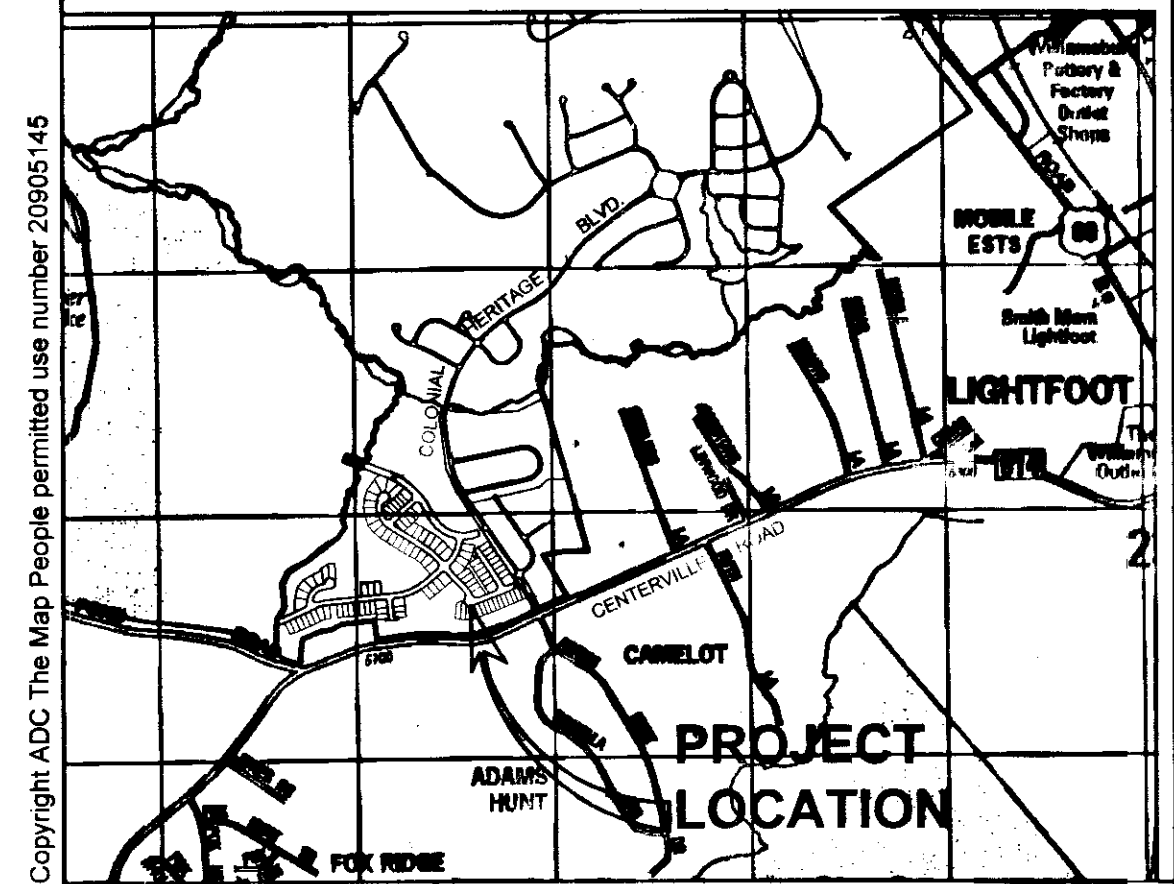
MY COMMISSION EXPIRES August 31, 2015

NOTARY PUBLIC

NOTARY REGISTRATION NUMBER: 304286

GENERAL NOTES:

- 1. PROPERTY AS SHOWN IS A PORTION OF TAX MAP PARCEL # (31-1)(1-11), INSTRUMENT #030000330 AND TAX MAP PARCEL # (22-4)(1-7), INSTRUMENT #040024552.
2. TAX MAP PARCEL # (31-1)(1-11) IS CURRENTLY ZONED "MU" - MIXED USE WITH PROFFERS.
2A. PARCELS ZONED "MU" ARE SUBJECT TO PROFFERS REFERENCING JCC CASE NO. Z-0004-2000, Z-0003-2002 AND Z-0004-2002 RECORDED IN THE OFFICE OF THE CLERK OF THE CIRCUIT COURT OF THE COUNTY OF JAMES CITY AS INSTRUMENT NO. 050000448.
3. ALL PARCELS SHALL BE SERVED BY PUBLIC SEWER AND PUBLIC WATER.
4. SETBACK REQUIREMENTS: AS SHOWN
5. ALL UTILITIES SHALL BE PLACED UNDERGROUND IN ACCORDANCE WITH SECTION 19-33 OF THE JAMES CITY SUBDIVISION ORDINANCE.
6. UNLESS OTHERWISE NOTED ALL DRAINAGE AND LANDSCAPE PRESERVATION EASEMENTS ARE TO REMAIN PRIVATE. PRIVATE DRAINAGE AND LANDSCAPE PRESERVATION EASEMENTS HEREBY DEDICATED TO THE HOA (HOMEOWNER'S ASSOCIATION)
7. NEW MONUMENTS SHALL BE SET IN ACCORDANCE WITH SECTIONS 19-34 THRU 19-36 OF THE SUBDIVISION ORDINANCE.
8. WETLANDS AND LAND WITHIN RESOURCE PROTECTION AREAS SHALL REMAIN IN A NATURAL UNDISTURBED STATE EXCEPT FOR THOSE ACTIVITIES PERMITTED BY SECTION 23-7 (c) OF THE JAMES CITY COUNTY CODE.
9. IN ACCORDANCE WITH SECTION 19-29H OF THE JAMES CITY COUNTY ZONING ORDINANCE, THE NATURAL OPEN SPACE EASEMENTS SHALL REMAIN IN A NATURAL, UNDISTURBED STATE EXCEPT FOR THOSE ACTIVITIES REFERENCED IN THE DEED OF EASEMENT.
10. JCSA SHALL BE GRANTED INGRESS/EGRESS AND MAINTENANCE EASEMENTS TO WATER AND SEWER LOCATED WITHIN PRIVATE RIGHT-OF-WAYS.
11. ANY EXISTING, UNUSED WELLS SHALL BE ABANDONED IN ACCORDANCE WITH STATE PRIVATE WELL REGULATIONS AND JAMES CITY COUNTY CODE.
12. IN ACCORDANCE WITH SECTION 19-14 OF THE SUBDIVISION ORDINANCE THE STREETS WITHIN THIS SUBDIVISION ARE PRIVATE AND SHALL NOT BE MAINTAINED BY THE VIRGINIA DEPARTMENT OF TRANSPORTATION OR JAMES CITY COUNTY.
13. UTILITY EASEMENTS DENOTED AS "JCSA UTILITY EASEMENTS" ARE HEREBY CONVEYED TO JCSA AND ARE FOR THE EXCLUSIVE USE OF THE JCSA AND THE PROPERTY OWNER. OTHER UTILITY SERVICE PROVIDERS DESIRING TO USE THESE EASEMENTS WITH THE EXCEPTION OF PERPENDICULAR UTILITY CROSSINGS MUST OBTAIN AUTHORIZATION FOR ACCESS AND USE FROM THE JCSA AND THE PROPERTY OWNER. ADDITIONALLY, JCSA SHALL NOT BE HELD RESPONSIBLE FOR ANY DAMAGE TO IMPROVEMENTS WITHIN THIS EASEMENT, FROM ANY CAUSE.
14. THIS SITE PLAN AND/OR SUBDIVISION PLAN HAS BEEN REVIEWED AGAINST THE NATURAL RESOURCE INVENTORY IN ACCORDANCE WITH COLONIAL HERITAGE PROFFER #6. THE NATURAL RESOURCE INVENTORY RECOMMENDATIONS HAVE BEEN INCORPORATED INTO THESE DEVELOPMENT PLANS.



LOCATION MAP SCALE: 1"=2000'

- 15. THE PRIVATE UTILITY EASEMENTS AS SHOWN HEREON ADJACENT TO PRIVATE RIGHT-OF-WAYS SHALL INCLUDE DOMINION VIRGINIA POWER, VERIZON VIRGINIA, INC., JAMES CITY SERVICE AUTHORITY, VIRGINIA NATURAL GAS AND OTHER AVAILABLE UTILITIES AS PERMITTED BY HOA
16. A 10' DRAINAGE EASEMENT EXISTS AND IS CENTERED ON ALL PROPERTY LINES.
17. THIS PROPERTY LIES IN ZONE X (AREAS DETERMINED TO BE OUTSIDE THE 0.2% ANNUAL CHANCE FLOODPLAIN) PER F.I.R.M. #51095C0110C DATED 9/28/07.
18. RPA SIGNS ARE TO BE INSTALLED IN ACCORDANCE WITH SECTION 23-7(c) OF THE CHESAPEAKE BAY PRESERVATION ORDINANCE AND THE JAMES CITY COUNTY CODE.
18. THIS PLAT IS BASED ON DEED AND PLATS OF RECORD. A CURRENT FIELD BOUNDARY SURVEY WAS NOT PERFORMED.
19. THIS PLAT WAS PREPARED WITHOUT THE BENEFIT OF A TITLE REPORT AND IS SUBJECT TO EASEMENTS, SERVITUDES AND COVENANTS OF RECORD.

NOTES:
1. SEE SHEETS 2 THRU 4 FOR OVERALL BOUNDARY MEETS AND BOUNDS AND CURVE TABLES.
2. SEE SHEET 10 FOR LOT, OPEN SPACE AND RIGHT-OF-WAY CURVE TABLES.
3. SEE SHEETS 11-13 FOR UNDISTURBED NATURAL OPEN SPACE EASEMENT MEETS AND BOUNDS & AREAS.

AREA TABULATION
COLONIAL HERITAGE - PHASE IV, SECTION 2
LOTS 1 THRU 109 AND
COMMON OPEN SPACES #1 THRU #7

Table with 3 columns: Description, Square Feet (S.F.), and Acres (AC.±). Rows include Area of Residential Lots (763,239 S.F., 17.522 AC.±), Area of Right of Way (361,073 S.F., 8.289 AC.±), Area of Drainage Easement (129,366 S.F., 2.970 AC.±), Area of Common Open Space #1 (331,937 S.F., 7.620 AC.±), Area of Common Open Space #1A (5,594 S.F., 0.128 AC.±), Area of Common Open Space #2 (45,059 S.F., 1.034 AC.±), Area of Common Open Space #3 (34,737 S.F., 0.798 AC.±), Area of Common Open Space #4 (1,780 S.F., 0.041 AC.±), Area of Common Open Space #5 (7,171 S.F., 0.165 AC.±), Area of Common Open Space #6 (591,219 S.F., 13.573 AC.±), Area of Common Open Space #7 (603,551 S.F., 13.856 AC.±), TOTAL AREA SUBDIVIDED (2,874,726 S.F., 65.99 AC.±), NUMBER OF LOTS (109), AVERAGE LOT SIZE (7,002 S.F., 0.161 AC.±), SMALLEST LOT (4,920 S.F., 0.113 AC.±), LARGEST LOT (11,231 S.F., 0.258 AC.±), GROSS LOTS PER ACRE (1.652).

SURVEYOR'S CERTIFICATE

I HEREBY CERTIFY THAT TO THE BEST OF MY KNOWLEDGE AND BELIEF, THIS PLAT COMPLIES WITH ALL OF THE REQUIREMENTS OF THE BOARD OF SUPERVISORS AND ORDINANCES OF THE COUNTY OF JAMES CITY, VIRGINIA, REGARDING THE PLATTING OF SUBDIVISIONS WITHIN THE COUNTY.

THOMAS C. SUBLETT, L.S. #1886
7/24/12
DATE

CERTIFICATE OF APPROVAL

THIS SUBDIVISION IS APPROVED BY THE UNDERSIGNED IN ACCORDANCE WITH EXISTING SUBDIVISION REGULATIONS AND MAY BE ADMITTED TO RECORD.

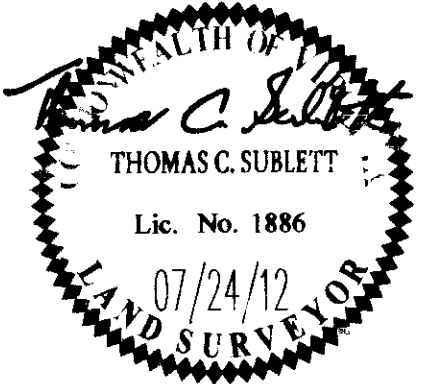
Subdivision Agent of James City County
8-6-12
DATE

13 Large/Small Plat(s) Recorded herewith as # 120024099

STATE OF VIRGINIA
CITY OF WILLIAMSBURG & COUNTY OF JAMES CITY CIRCUIT COURT. THIS 16th DAY OF November, 2012, THE PLAT SHOWN HEREON WAS PRESENTED AND ADMITTED TO THE RECORD AS THE LAW DIRECTS. @ 3:11 PM INSTRUMENT # 120024099

TESTE: Betsy B. Woolridge
BETSY B. WOOLRIDGE, CLERK
by Gary Van Alstyn, D.C.

Revision table with columns: Rev, Date, Description, Revised By. Row 1: 07/24/12, REVISED PER COUNTY COMMENTS, RMS.

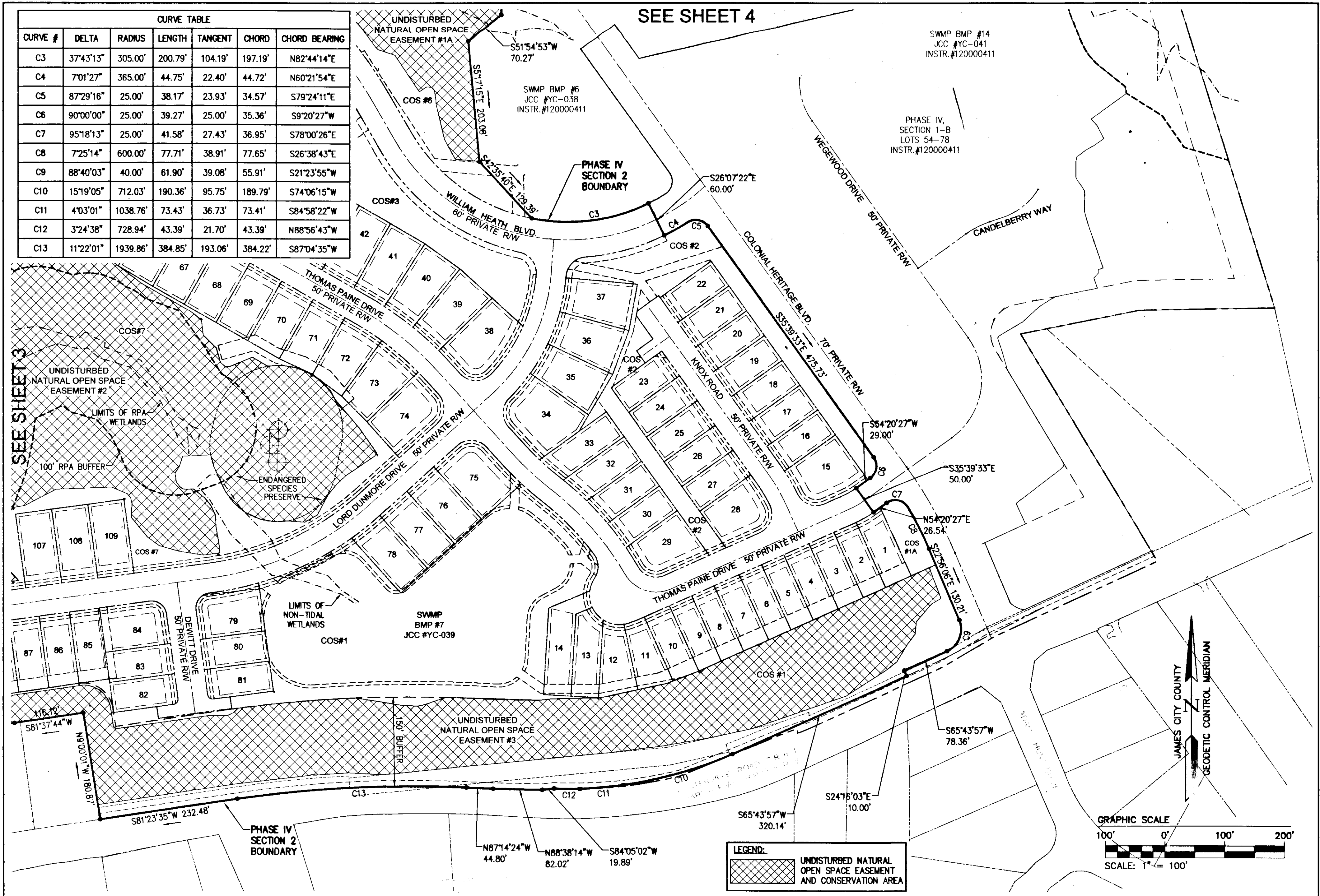


AES CONSULTING ENGINEERS
5248 Olde Towne Road, Suite 1
Williamsburg, Virginia 23188
Phone: (757) 253-0040
Fax: (757) 220-8994
www.aesva.com
Hampton Roads | Central Virginia | Middle Peninsula

PLAT OF SUBDIVISION
COLONIAL HERITAGE
PHASE IV, SECTION 2A
LOTS 1 THRU 109 AND
COMMON OPEN SPACES #1 THRU #7
PREPARED FOR COLONIAL HERITAGE LLC
STONEHOUSE DISTRICT JAMES CITY COUNTY VIRGINIA

Project Contacts: TCS
Project Number: 8881-42A
Scale: NONE Date: 08/22/12
Sheet Number: 1 of 13

120024099



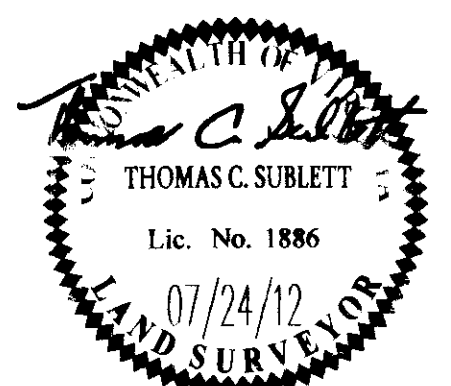
| CURVE TABLE | | | | | | |
|-------------|-----------|----------|---------|---------|---------|---------------|
| CURVE # | DELTA | RADIUS | LENGTH | TANGENT | CHORD | CHORD BEARING |
| C3 | 37°43'13" | 305.00' | 200.79' | 104.19' | 197.19' | N82°44'14"E |
| C4 | 70°1'27" | 365.00' | 44.75' | 22.40' | 44.72' | N60°21'54"E |
| C5 | 87°29'16" | 25.00' | 38.17' | 23.93' | 34.57' | S79°24'11"W |
| C6 | 90°00'00" | 25.00' | 39.27' | 25.00' | 35.36' | S9°20'27"W |
| C7 | 95°18'13" | 25.00' | 41.58' | 27.43' | 36.95' | S78°00'26"E |
| C8 | 7°25'14" | 600.00' | 77.71' | 38.91' | 77.65' | S26°38'43"E |
| C9 | 88°40'03" | 40.00' | 61.90' | 39.08' | 55.91' | S21°23'55"W |
| C10 | 15°19'05" | 712.03' | 190.36' | 95.75' | 189.79' | S74°06'15"W |
| C11 | 4°03'01" | 1038.76' | 73.43' | 36.73' | 73.41' | S84°58'22"W |
| C12 | 3°24'38" | 728.94' | 43.39' | 21.70' | 43.39' | N88°56'43"W |
| C13 | 11°22'01" | 1939.86' | 384.85' | 193.06' | 384.22' | S87°04'35"W |

SEE SHEET 3

SEE SHEET 4

City of Williamsburg & County of James City
 Circuit Court: This PLAT was recorded on
November 16, 2012
 at **3:11** PM, PB
 Document # **120024099**
 BETSY B. WOOLRIDGE, CLERK
Betsy Woolridge, Dep. Clerk

| Rev | Date | Description | Revised By |
|-----|----------|-----------------------------|------------|
| 1 | 07/24/12 | REVISED PER COUNTY COMMENTS | |



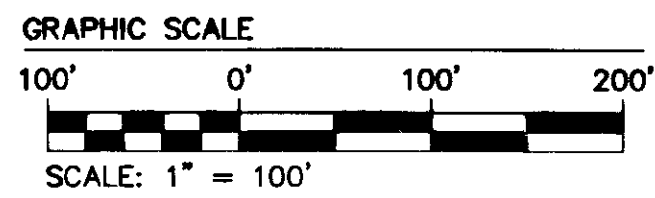
AES
 CONSULTING ENGINEERS
 Hampton Roads | Central Virginia | Middle Peninsula
 5248 Old Towne Road, Suite 1
 Williamsburg, Virginia 23188
 Phone: (757) 253-0040
 Fax: (757) 220-8994
 www.aesva.com

**PLAT OF SUBDIVISION
 COLONIAL HERITAGE
 PHASE IV, SECTION 2A
 LOTS 1 THRU 109 AND
 COMMON OPEN SPACES #1 THRU #7
 PREPARED FOR COLONIAL HERITAGE LLC**
 STONEHOUSE DISTRICT JAMES CITY COUNTY VIRGINIA

Project Contacts: TCS
 Project Number: 8881-42A
 Scale: 1"=100' Date: 08/22/12
 Sheet Number
2 of 13

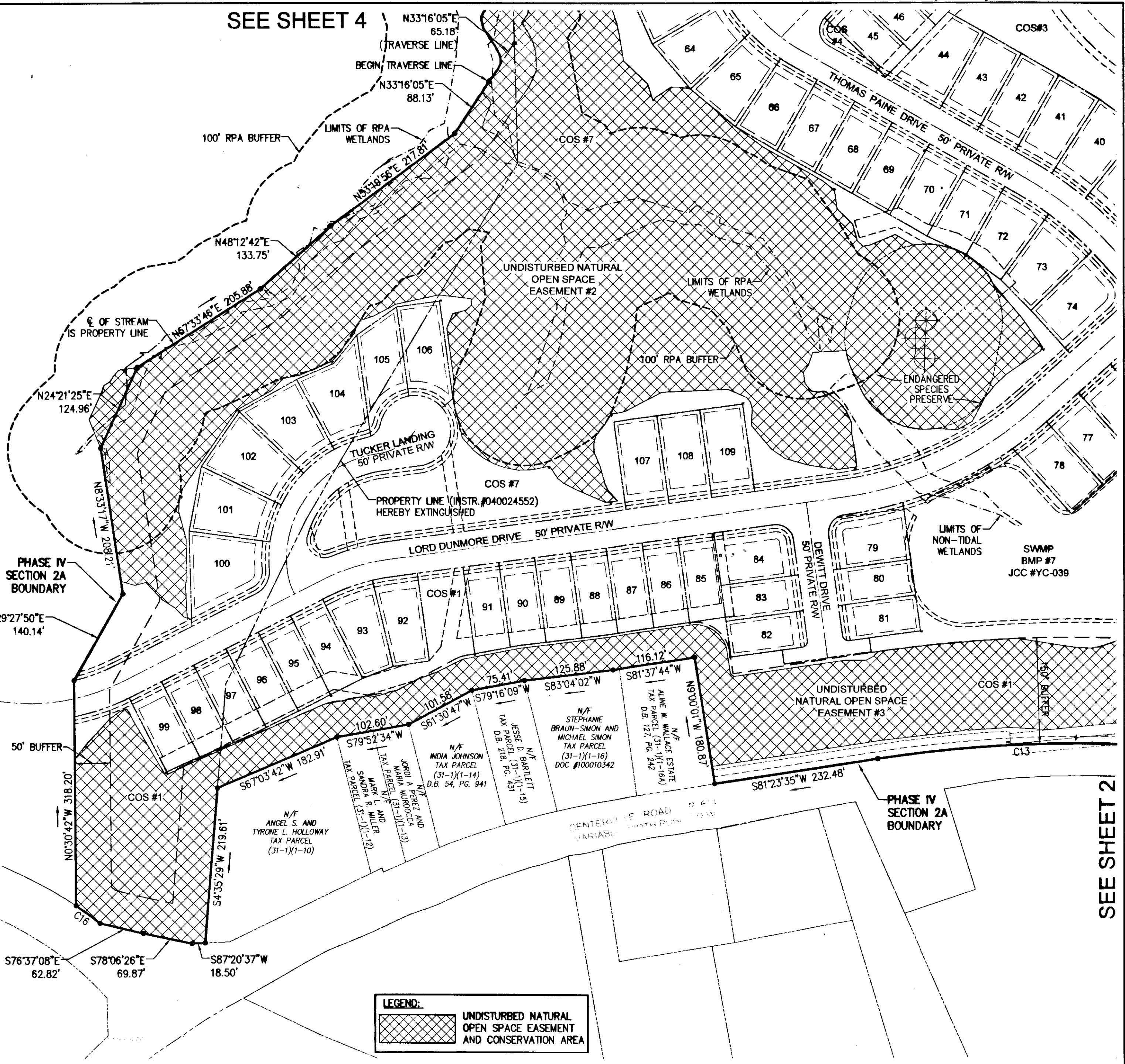
120024099

SEE SHEET 4




FUTURE DEVELOPMENT

REMAINDER TAX MAP PARCEL # (22-4)(1-7) COLONIAL HERITAGE LLC INSTR. #040024552



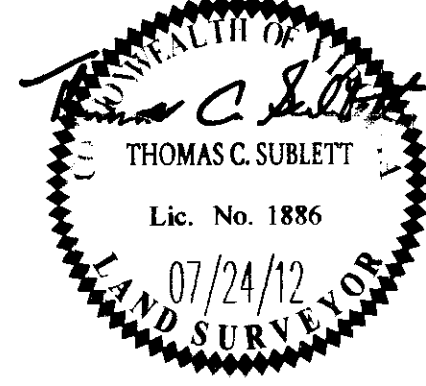
LEGEND:

 UNDISTURBED NATURAL OPEN SPACE EASEMENT AND CONSERVATION AREA

SEE SHEET 2

| | | | |
|-----|----------|-----------------------------|------------|
| 1 | 07/24/12 | REVISED PER COUNTY COMMENTS | Revised By |
| Rev | Date | Description | Revised By |

City of Williamsburg & County of James City
 Circuit Court: This PLAT was recorded on
November 16, 2012
 at 3:11 PM, PB PG
 Document # **120024099**
 BETSY B. WOOLRIDGE, CLERK
Betsy Woolridge, Dep. Clerk



AES
 CONSULTING ENGINEERS
 Hampton Roads | Central Virginia | Middle Peninsula

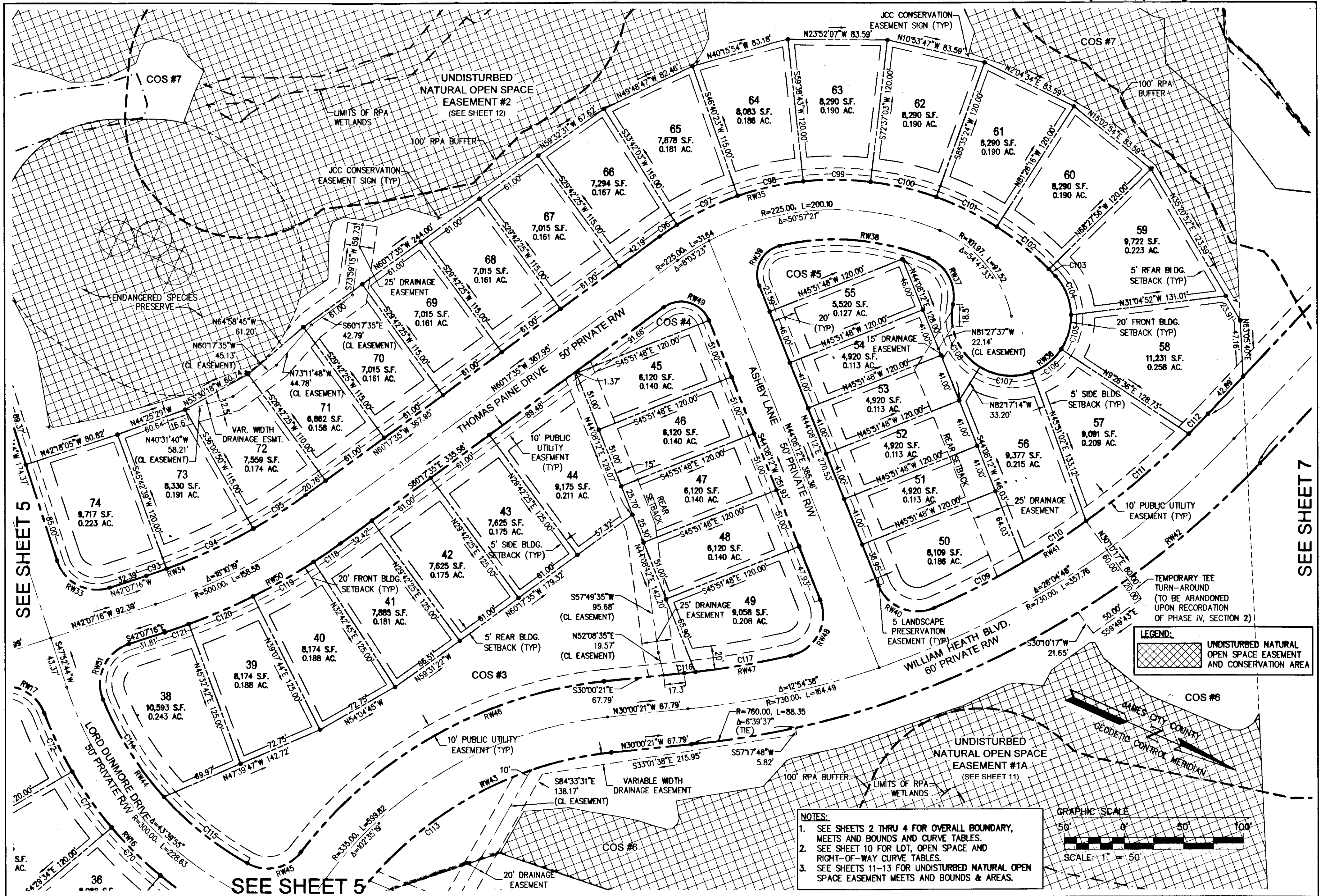
5248 Old Towne Road, Suite 1
 Williamsburg, Virginia 23188
 Phone: (757) 253-0040
 Fax: (757) 220-8994
 www.aesva.com

13 Large/Small Plat(s) Recorded
 Herewith as # 120024099

**PLAT OF SUBDIVISION
 COLONIAL HERITAGE
 PHASE IV, SECTION 2A
 LOTS 1 THRU 109 AND
 COMMON OPEN SPACES #1 THRU #7
 PREPARED FOR COLONIAL HERITAGE LLC**

STONEHOUSE DISTRICT JAMES CITY COUNTY VIRGINIA

| | |
|-------------------|----------------|
| Project Contacts: | TCS |
| Project Number: | 8881-42A |
| Scale: | 1"=100' |
| Date: | 08/22/12 |
| Sheet Number | 3 of 13 |

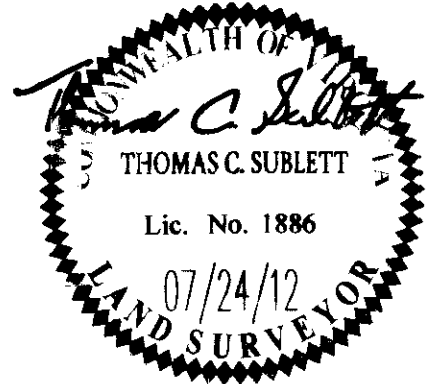


SEE SHEET 5

SEE SHEET 7

SEE SHEET 5

| | |
|---|-------------|
| City of Williamsburg & County of James City | |
| Circuit Court: This PLAT was recorded on | |
| November 16, 2012 | |
| at 3:11 PM, PG | |
| Document # 120024099 | |
| BETSY B. WOOLRIDGE, CLERK | |
| <i>Patrick Hopkins</i> , Dep. Clerk | |
| 1 | 07/24/12 |
| REVISED PER COUNTY COMMENTS | |
| Rev | Date |
| | Description |
| | Revised By |



AES
CONSULTING ENGINEERS
Hampton Roads | Central Virginia | Middle Peninsula

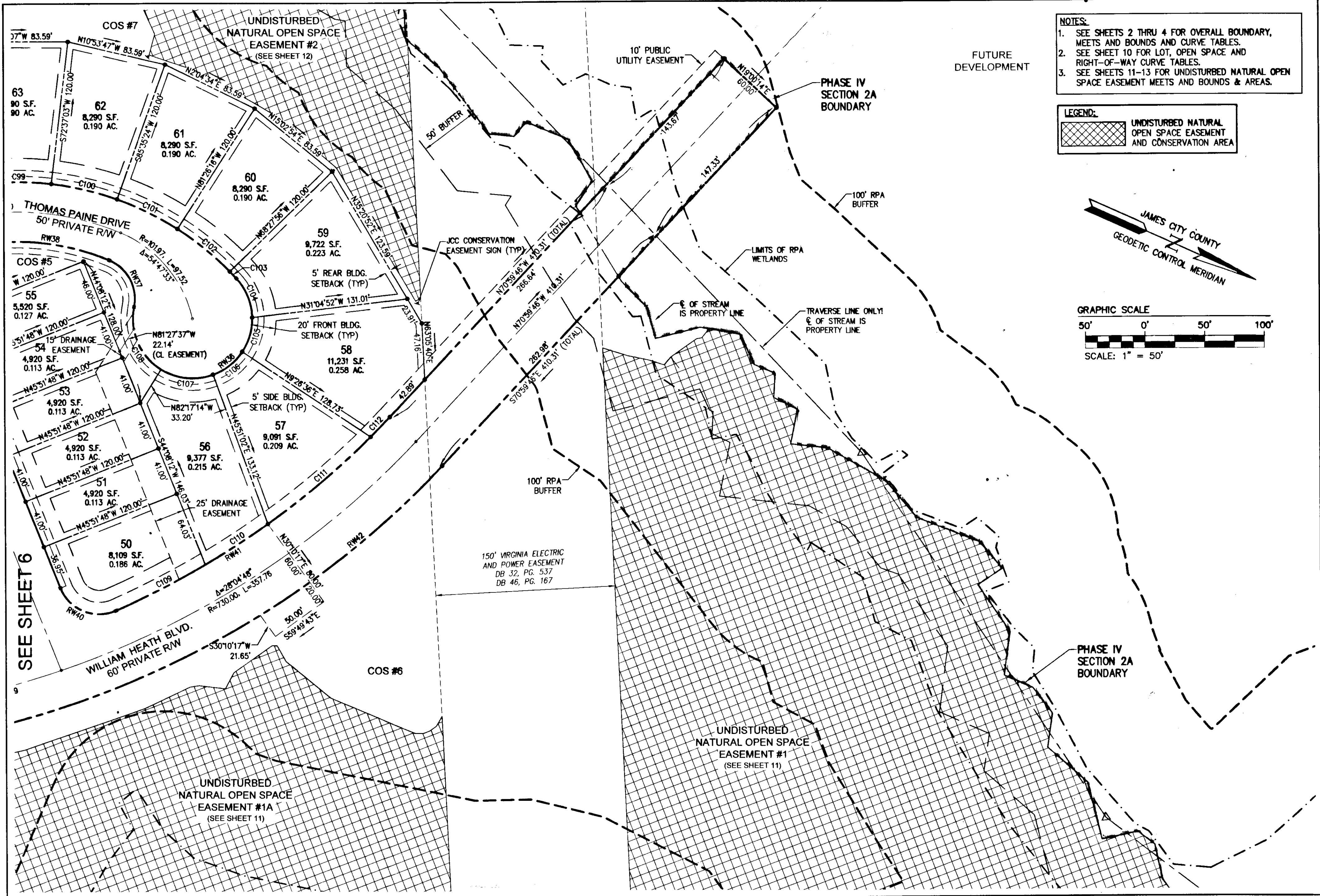
5248 Olde Towne Road, Suite 1
Williamsburg, Virginia 23188
Phone: (757) 253-0040
Fax: (757) 220-8994
www.aesva.com

**PLAT OF SUBDIVISION
COLONIAL HERITAGE
PHASE IV, SECTION 2A
LOTS 1 THRU 109 AND
COMMON OPEN SPACES #1 THRU #7
PREPARED FOR COLONIAL HERITAGE LLC**

STONEHOUSE DISTRICT | JAMES CITY COUNTY | VIRGINIA

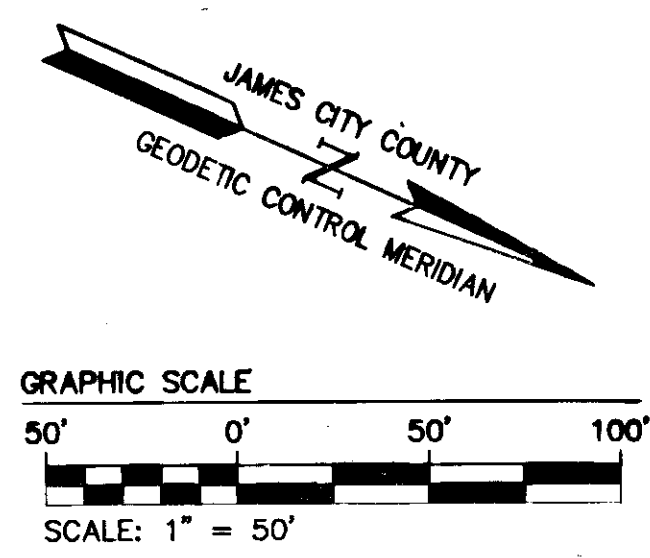
| | |
|------------------|----------|
| Project Contacts | TCS |
| Project Number | 8881-42A |
| Scale | Date |
| 1"=50' | 08/22/12 |
| Sheet Number | |
| 6 of 13 | |

120024099



NOTES:
 1. SEE SHEETS 2 THRU 4 FOR OVERALL BOUNDARY, MEETS AND BOUNDS AND CURVE TABLES.
 2. SEE SHEET 10 FOR LOT, OPEN SPACE AND RIGHT-OF-WAY CURVE TABLES.
 3. SEE SHEETS 11-13 FOR UNDISTURBED NATURAL OPEN SPACE EASEMENT MEETS AND BOUNDS & AREAS.

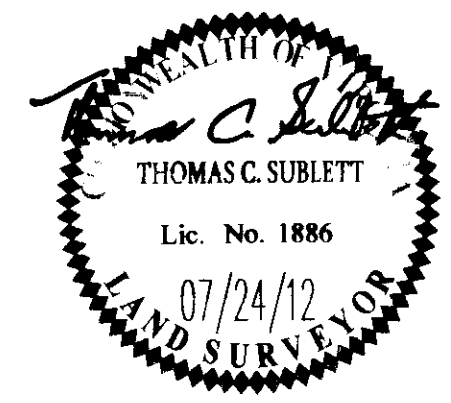
LEGEND:
 UNDISTURBED NATURAL OPEN SPACE EASEMENT AND CONSERVATION AREA



SEE SHEET 6

| | | | |
|-----|----------|-----------------------------|------------|
| 1 | 07/24/12 | REVISED PER COUNTY COMMENTS | REB |
| Rev | Date | Description | Revised By |

City of Williamsburg & County of James City
 Circuit Court: This PLAT was recorded on
November 16, 2012
 at **3:11** PM, PG
 Document # **120024099**
 BETSY B. WOOLRIDGE, CLERK
Patrick Williams, Dep. Clerk



13 Larger email Plat(s) Recorded herewith as # 120024099

NES
 CONSULTING ENGINEERS
 Hampton Roads | Central Virginia | Middle Peninsula

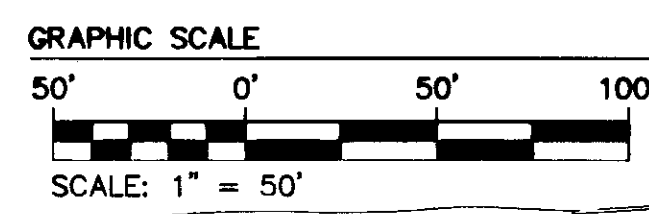
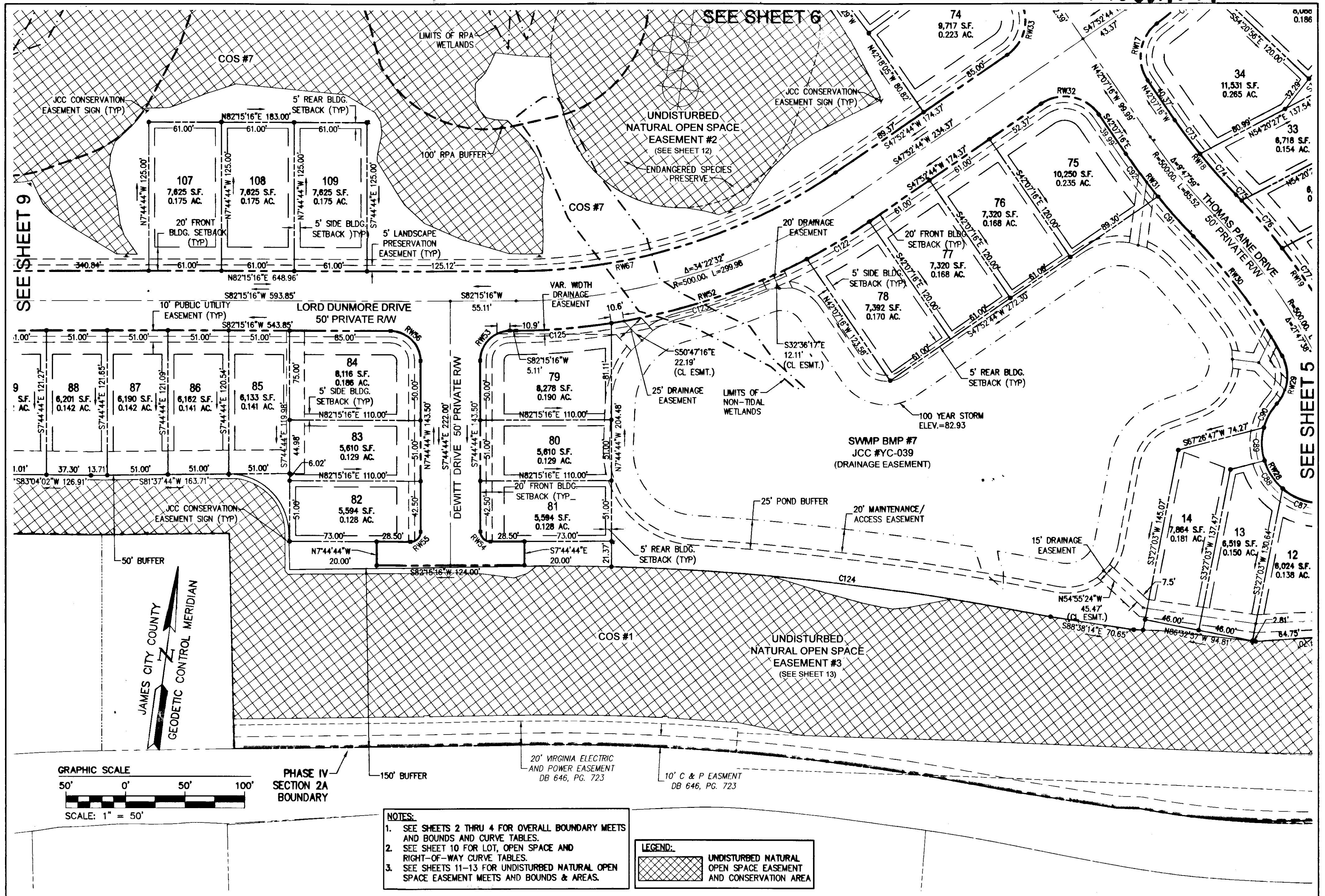
5248 Old Towne Road, Suite 1
 Williamsburg, Virginia 23188
 Phone: (757) 253-0040
 Fax: (757) 220-8994
 www.aesva.com

**PLAT OF SUBDIVISION
 COLONIAL HERITAGE
 PHASE IV, SECTION 2A
 LOTS 1 THRU 109 AND
 COMMON OPEN SPACES #1 THRU #7
 PREPARED FOR COLONIAL HERITAGE LLC**

STONEHOUSE DISTRICT JAMES CITY COUNTY VIRGINIA

| | |
|--------------------------|----------------|
| Project Contacts: TCS | |
| Project Number: 8881-42A | |
| Scale: 1"=50' | Date: 06/22/12 |
| Sheet Number | |
| 7 of 13 | |

120024099



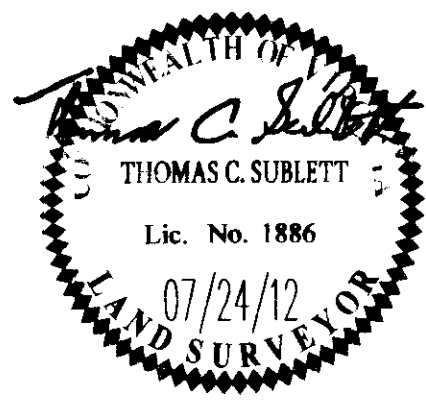
PHASE IV SECTION 2A BOUNDARY

- NOTES:**
- SEE SHEETS 2 THRU 4 FOR OVERALL BOUNDARY MEETS AND BOUNDS AND CURVE TABLES.
 - SEE SHEET 10 FOR LOT, OPEN SPACE AND RIGHT-OF-WAY CURVE TABLES.
 - SEE SHEETS 11-13 FOR UNDISTURBED NATURAL OPEN SPACE EASEMENT MEETS AND BOUNDS & AREAS.

LEGEND:

- UNDISTURBED NATURAL OPEN SPACE EASEMENT AND CONSERVATION AREA

| | | | |
|---|----------|-----------------------------|------------|
| City of Williamsburg & County of James City Circuit Court: This PLAT was recorded on November 16, 2012 at 3:11 PM, PB PG Document # 120024099 Betsy B. Woolridge, Clerk <i>(for Public Affairs)</i> Dep. Clerk | | | |
| 1 | 07/24/12 | REVISED PER COUNTY COMMENTS | |
| Rev | Date | Description | Revised By |



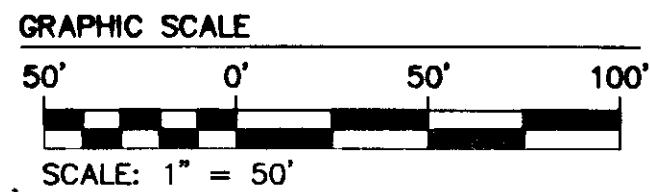
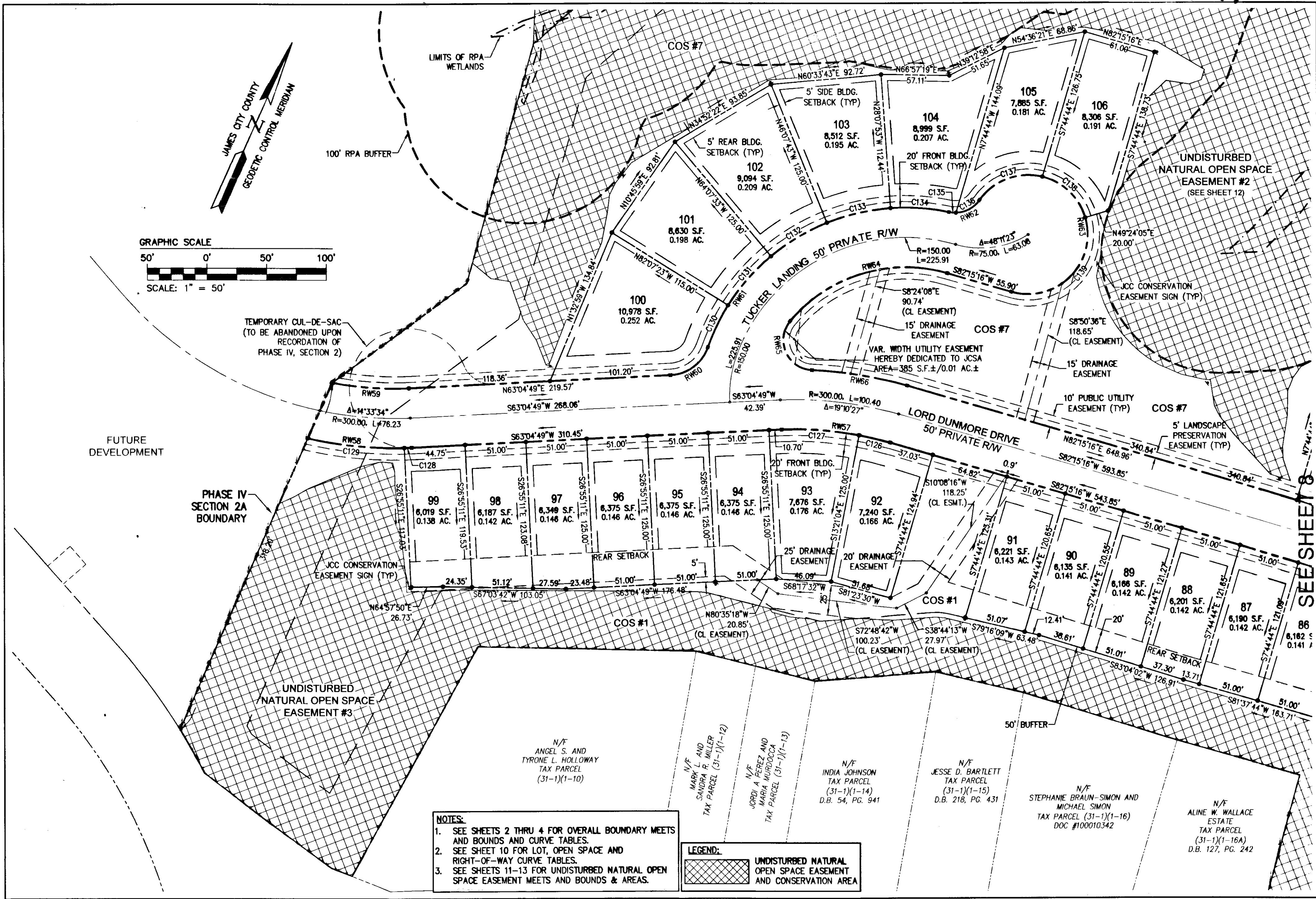
13 Large/Embossed Plat(s) Recorded
 Home with as # 120024099

AES
 CONSULTING ENGINEERS
 Hampton Roads | Central Virginia | Middle Peninsula
 5248 Old Towne Road, Suite 1
 Williamsburg, Virginia 23188
 Phone: (757) 253-0040
 Fax: (757) 220-8994
 www.aesva.com

PLAT OF SUBDIVISION COLONIAL HERITAGE
 PHASE IV, SECTION 2A
 LOTS 1 THRU 109 AND COMMON OPEN SPACES #1 THRU #7
 PREPARED FOR COLONIAL HERITAGE LLC

STONEHOUSE DISTRICT JAMES CITY COUNTY VIRGINIA

| | |
|-------------------|----------|
| Project Contacts: | TCS |
| Project Number: | 8881-42A |
| Scale: | 1"=50' |
| Date: | 08/22/12 |
| Sheet Number | 8 of 13 |

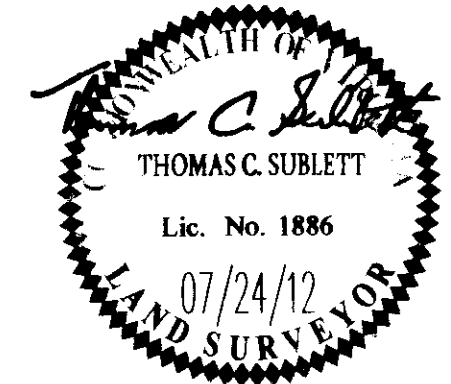


- NOTES:**
- SEE SHEETS 2 THRU 4 FOR OVERALL BOUNDARY MEETS AND BOUNDS AND CURVE TABLES.
 - SEE SHEET 10 FOR LOT, OPEN SPACE AND RIGHT-OF-WAY CURVE TABLES.
 - SEE SHEETS 11-13 FOR UNDISTURBED NATURAL OPEN SPACE EASEMENT MEETS AND BOUNDS & AREAS.

LEGEND:

UNDISTURBED NATURAL OPEN SPACE EASEMENT AND CONSERVATION AREA

| | | | |
|--|----------|-----------------------------|------------|
| City of Williamsburg & County of James City Circuit Court: This PLAT was recorded on November 16, 2012 at 3:11 PM, PG. _____ Document # 120024099 BETSY B. WOOLRIDGE, CLERK <i>Betsy Woolridge</i> , Dep. Clerk | | | |
| 1 | 07/24/12 | REVISED PER COUNTY COMMENTS | MSB |
| Rev | Date | Description | Revised By |



AVES
CONSULTING ENGINEERS
5248 Old Towne Road, Suite 1
Williamsburg, Virginia 23188
Phone: (757) 253-0040
Fax: (757) 220-8994
www.avesva.com
Hampton Roads | Central Virginia | Middle Peninsula

**PLAT OF SUBDIVISION
COLONIAL HERITAGE
PHASE IV, SECTION 2A
LOTS 1 THRU 109 AND
COMMON OPEN SPACES #1 THRU #7
PREPARED FOR COLONIAL HERITAGE LLC**
STONEHOUSE DISTRICT JAMES CITY COUNTY VIRGINIA

| | |
|-------------------|----------------|
| Project Contacts: | TCS |
| Project Number: | 8881-42A |
| Scale: | 1"=50' |
| Date: | 06/22/12 |
| Sheet Number | 9 of 13 |

SEE SHEETS 8

| CURVE TABLE | | | | | | |
|-------------|------------|---------|---------|---------|---------|---------------|
| CURVE # | DELTA | RADIUS | LENGTH | TANGENT | CHORD | CHORD BEARING |
| RW14 | 21°42'42" | 365.00' | 138.31' | 70.00' | 137.49' | S74°43'59"W |
| RW15 | 80°51'28" | 35.00' | 49.39' | 29.82' | 45.40' | S45°09'36"W |
| RW16 | 40°30'03" | 325.00' | 229.73' | 119.90' | 224.98' | S24°58'53"W |
| RW17 | 87°21'11" | 35.00' | 53.36' | 33.42' | 48.34' | S1°33'19"W |
| RW18 | 9°47'59" | 475.00' | 81.24' | 40.72' | 81.14' | S47°01'15"E |
| RW19 | 21°47'38" | 525.00' | 199.70' | 101.07' | 198.49' | S41°01'26"E |
| RW20 | 84°08'19" | 35.00' | 51.40' | 31.59' | 46.90' | S72°11'47"E |
| RW21 | 92°28'20" | 35.00' | 56.49' | 36.54' | 50.55' | N19°29'53"E |
| RW22 | 8°55'16" | 275.00' | 42.82' | 21.45' | 42.77' | N31°11'55"W |
| RW23 | 9°44'44" | 325.00' | 55.28' | 27.71' | 55.21' | S30°47'11"E |
| RW24 | 88°21'08" | 35.00' | 53.97' | 34.01' | 48.78' | S70°05'23"E |
| RW25 | 11°23'36" | 125.00' | 24.86' | 12.47' | 24.82' | N60°02'15"E |
| RW26 | 11°23'36" | 175.00' | 34.80' | 17.46' | 34.74' | S60°02'15"W |
| RW27 | 5°43'52" | 325.00' | 32.51' | 16.27' | 32.50' | S68°35'59"W |
| RW28 | 142°28'11" | 50.00' | 124.33' | 147.17' | 94.68' | N37°17'59"W |
| RW29 | 70°46'37" | 35.00' | 43.24' | 24.86' | 40.54' | N1°27'12"W |
| RW30 | 15°04'44" | 475.00' | 125.01' | 62.87' | 124.65' | N44°22'53"W |
| RW31 | 9°47'59" | 525.00' | 89.79' | 45.01' | 89.68' | N47°01'15"W |
| RW32 | 90°00'00" | 35.00' | 54.98' | 35.00' | 49.50' | N87°07'16"W |
| RW33 | 90°00'00" | 35.00' | 54.98' | 35.00' | 49.50' | N2°52'44"E |
| RW34 | 18°10'19" | 475.00' | 150.65' | 75.96' | 150.02' | N51°12'26"W |
| RW35 | 83°37'56" | 250.00' | 364.91' | 223.65' | 333.37' | N18°28'37"W |
| RW36 | 233°58'05" | 50.00' | 204.18' | 98.20' | 89.11' | S39°40'37"E |
| RW37 | 78°35'17" | 35.00' | 48.01' | 28.64' | 44.33' | S38°00'47"W |
| RW38 | 36°21'41" | 200.00' | 126.93' | 65.68' | 124.81' | S19°27'42"E |
| RW39 | 98°13'16" | 25.00' | 42.86' | 28.87' | 37.80' | S86°45'11"E |
| RW40 | 91°56'09" | 35.00' | 56.16' | 36.20' | 50.33' | N1°49'53"W |

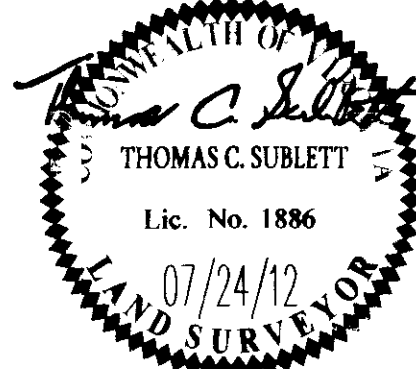
| CURVE TABLE | | | | | | |
|-------------|------------|---------|---------|---------|---------|---------------|
| CURVE # | DELTA | RADIUS | LENGTH | TANGENT | CHORD | CHORD BEARING |
| RW41 | 21°17'53" | 700.00' | 260.20' | 131.62' | 258.71' | N58°26'54"W |
| RW42 | 40°59'26" | 760.00' | 543.72' | 284.08' | 532.20' | S50°30'03"E |
| RW43 | 86°07'02" | 305.00' | 458.42' | 285.00' | 416.47' | S73°03'51"E |
| RW44 | 38°55'05" | 275.00' | 186.79' | 97.16' | 183.22' | N24°26'51"E |
| RW45 | 82°08'41" | 35.00' | 50.18' | 30.50' | 45.99' | N36°05'02"W |
| RW46 | 47°09'02" | 365.00' | 300.37' | 159.28' | 291.97' | N53°34'51"W |
| RW47 | 7°25'26" | 700.00' | 90.70' | 45.41' | 90.64' | N33°43'03"W |
| RW48 | 98°26'02" | 35.00' | 60.13' | 40.57' | 53.00' | N86°38'47"W |
| RW49 | 104°25'47" | 25.00' | 45.57' | 32.25' | 39.52' | S8°04'42"E |
| RW50 | 18°10'19" | 525.00' | 166.51' | 83.96' | 165.81' | S51°12'26"E |
| RW51 | 93°58'20" | 35.00' | 57.40' | 37.51' | 51.18' | S89°06'26"E |
| RW52 | 34°22'32" | 525.00' | 314.98' | 162.39' | 310.28' | S65°04'00"W |
| RW53 | 90°00'00" | 25.00' | 39.27' | 25.00' | 35.36' | S37°15'16"W |
| RW54 | 90°00'00" | 8.50' | 13.35' | 8.50' | 12.02' | S52°44'44"E |
| RW55 | 90°00'00" | 8.50' | 13.35' | 8.50' | 12.02' | N37°15'16"E |
| RW56 | 90°00'00" | 25.00' | 39.27' | 25.00' | 35.36' | N52°44'44"W |
| RW57 | 19°10'27" | 275.00' | 92.03' | 46.45' | 91.60' | S72°40'02"W |
| RW58 | 15°28'57" | 325.00' | 87.82' | 44.18' | 87.56' | S70°49'17"W |
| RW59 | 13°27'52" | 275.00' | 64.62' | 32.46' | 64.48' | N69°48'45"E |
| RW60 | 68°00'14" | 35.00' | 41.54' | 23.61' | 39.15' | N29°04'41"E |
| RW61 | 82°52'31" | 175.00' | 253.13' | 154.49' | 231.63' | N36°30'50"E |
| RW62 | 66°40'55" | 25.00' | 29.10' | 16.45' | 27.48' | N44°36'38"E |
| RW63 | 250°59'06" | 50.00' | 219.03' | 70.12' | 81.42' | S43°14'17"E |
| RW64 | 66°49'11" | 125.00' | 145.78' | 82.45' | 137.66' | S48°50'40"W |
| RW65 | 127°26'53" | 25.00' | 55.61' | 50.64' | 44.83' | S48°17'22"E |
| RW66 | 14°16'05" | 325.00' | 80.93' | 40.68' | 80.72' | N75°07'14"E |
| RW67 | 34°22'32" | 475.00' | 284.98' | 146.93' | 280.73' | N65°04'00"E |

| CURVE TABLE | | | | | | |
|-------------|-----------|---------|--------|---------|--------|---------------|
| CURVE # | DELTA | RADIUS | LENGTH | TANGENT | CHORD | CHORD BEARING |
| C68 | 0°29'19" | 325.00' | 2.77' | 1.39' | 2.77' | S4°58'32"W |
| C69 | 10°08'38" | 325.00' | 57.54' | 28.84' | 57.46' | S10°17'30"W |
| C70 | 10°08'38" | 325.00' | 57.54' | 28.84' | 57.46' | S20°26'08"W |
| C71 | 10°08'38" | 325.00' | 57.54' | 28.84' | 57.46' | S30°34'45"W |
| C72 | 9°34'51" | 325.00' | 54.35' | 27.24' | 54.28' | S40°26'30"W |
| C73 | 4°16'29" | 475.00' | 35.44' | 17.73' | 35.43' | S44°15'30"E |
| C74 | 5°31'30" | 475.00' | 45.80' | 22.92' | 45.79' | S49°09'30"E |
| C75 | 0°44'06" | 525.00' | 6.74' | 3.37' | 6.74' | S51°33'12"E |
| C76 | 5°42'26" | 525.00' | 52.30' | 26.17' | 52.27' | S48°19'56"E |
| C77 | 5°36'36" | 525.00' | 51.41' | 25.72' | 51.38' | S42°40'24"E |
| C78 | 5°34'11" | 525.00' | 51.04' | 25.54' | 51.02' | S37°05'01"E |
| C79 | 4°10'18" | 525.00' | 38.22' | 19.12' | 38.22' | S32°12'46"E |
| C80 | 2°02'46" | 325.00' | 11.61' | 5.80' | 11.61' | S34°38'10"E |
| C81 | 7°41'58" | 325.00' | 43.67' | 21.87' | 43.64' | S29°45'48"E |
| C82 | 11°03'46" | 175.00' | 33.79' | 16.95' | 33.74' | S59°52'20"W |
| C83 | 0°19'50" | 175.00' | 1.01' | 0.50' | 1.01' | S65°34'08"W |
| C84 | 0°47'14" | 325.00' | 4.47' | 2.23' | 4.47' | S66°07'40"W |
| C85 | 4°56'38" | 325.00' | 28.04' | 14.03' | 28.03' | S68°59'36"W |
| C86 | 9°47'18" | 50.00' | 8.54' | 4.28' | 8.53' | S76°21'34"W |
| C87 | 41°42'40" | 50.00' | 36.40' | 19.05' | 35.60' | N77°53'27"W |
| C88 | 32°11'21" | 50.00' | 28.09' | 14.43' | 27.72' | N40°56'27"W |
| C89 | 32°17'33" | 50.00' | 28.18' | 14.48' | 27.81' | N8°42'00"W |
| C90 | 26°29'19" | 50.00' | 23.12' | 11.77' | 22.91' | N20°41'27"E |
| C91 | 4°52'52" | 525.00' | 44.73' | 22.38' | 44.71' | N49°28'49"W |
| C92 | 4°55'07" | 525.00' | 45.07' | 22.55' | 45.05' | N44°34'49"W |
| C93 | 2°10'05" | 475.00' | 17.97' | 8.99' | 17.97' | N43°12'18"W |
| C94 | 9°41'49" | 475.00' | 80.39' | 40.29' | 80.29' | N49°08'15"W |
| C95 | 6°18'26" | 475.00' | 52.29' | 26.17' | 52.26' | N57°08'23"W |
| C96 | 3°59'38" | 250.00' | 17.43' | 8.72' | 17.42' | N58°17'46"W |
| C97 | 12°58'20" | 250.00' | 56.60' | 28.42' | 56.48' | N49°48'47"W |
| C98 | 12°58'20" | 250.00' | 56.60' | 28.42' | 56.48' | N36°50'27"W |
| C99 | 12°58'20" | 250.00' | 56.60' | 28.42' | 56.48' | N23°52'07"W |
| C100 | 12°58'20" | 250.00' | 56.60' | 28.42' | 56.48' | N10°53'47"W |
| C101 | 12°58'20" | 250.00' | 56.60' | 28.42' | 56.48' | N2°04'34"E |
| C102 | 12°58'20" | 250.00' | 56.60' | 28.42' | 56.48' | N15°02'54"E |
| C103 | 1°48'17" | 250.00' | 7.87' | 3.94' | 7.87' | N22°26'12"E |

| CURVE TABLE | | | | | | |
|-------------|------------|----------|---------|---------|---------|---------------|
| CURVE # | DELTA | RADIUS | LENGTH | TANGENT | CHORD | CHORD BEARING |
| C104 | 41°19'08" | 50.00' | 36.06' | 18.85' | 35.28' | N43°59'55"E |
| C105 | 34°47'07" | 50.00' | 30.36' | 15.66' | 29.89' | N82°03'02"E |
| C106 | 36°24'26" | 50.00' | 31.77' | 16.44' | 31.24' | S62°21'11"E |
| C107 | 51°51'44" | 50.00' | 45.26' | 24.31' | 43.73' | S18°13'06"E |
| C108 | 69°35'40" | 50.00' | 60.73' | 34.75' | 57.07' | S42°30'36"W |
| C109 | 6°53'42" | 700.00' | 84.24' | 42.17' | 84.19' | N51°14'49"W |
| C110 | 5°08'03" | 700.00' | 62.73' | 31.38' | 62.70' | N57°15'42"W |
| C111 | 9°16'08" | 700.00' | 113.24' | 56.74' | 113.12' | N64°27'47"W |
| C112 | 1°54'30" | 700.00' | 23.31' | 11.66' | 23.31' | N70°03'06"W |
| C113 | 48°23'49" | 305.00' | 257.63' | 137.06' | 250.04' | S54°12'15"E |
| C114 | 20°15'14" | 275.00' | 97.21' | 49.12' | 96.71' | N33°46'47"E |
| C115 | 18°39'51" | 275.00' | 89.58' | 45.19' | 89.19' | N14°19'14"E |
| C116 | 0°44'32" | 700.00' | 9.07' | 4.53' | 9.07' | N30°22'37"W |
| C117 | 6°40'53" | 700.00' | 81.63' | 40.86' | 81.58' | N34°05'20"W |
| C118 | 3°00'21" | 525.00' | 27.54' | 13.77' | 27.54' | S58°47'25"E |
| C119 | 6°24'58" | 525.00' | 58.79' | 29.43' | 58.76' | S54°04'45"E |
| C120 | 6°24'58" | 525.00' | 58.79' | 29.43' | 58.76' | S47°39'47"E |
| C121 | 2°20'02" | 525.00' | 21.39' | 10.69' | 21.38' | S43°17'17"E |
| C122 | 6°40'20" | 525.00' | 61.14' | 30.60' | 61.10' | S51°12'54"W |
| C123 | 18°57'02" | 525.00' | 173.64' | 87.62' | 172.85' | S64°01'35"W |
| C124 | 8°59'42" | 2089.86' | 328.09' | 164.38' | 327.75' | N68°15'45"E |
| C125 | 8°45'09" | 525.00' | 80.20' | 40.18' | 80.12' | S77°52'41"W |
| C126 | 5°36'19" | 275.00' | 26.90' | 13.46' | 26.89' | S79°27'06"W |
| C127 | 13°34'08" | 275.00' | 65.13' | 32.72' | 64.97' | S69°51'53"W |
| C128 | 1°06'10" | 325.00' | 6.25' | 3.13' | 6.25' | S63°37'54"W |
| C129 | 14°22'48" | 325.00' | 81.57' | 41.00' | 81.35' | S71°22'22"W |
| C130 | 12°48'03" | 175.00' | 39.10' | 19.63' | 39.02' | N1°28'36"E |
| C131 | 17°59'50" | 175.00' | 54.97' | 27.71' | 54.74' | N16°52'32"E |
| C132 | 17°59'50" | 175.00' | 54.97' | 27.71' | 54.74' | N34°52'22"E |
| C133 | 17°59'50" | 175.00' | 54.97' | 27.71' | 54.74' | N52°52'12"E |
| C134 | 16°04'59" | 175.00' | 49.12' | 24.72' | 48.96' | N69°54'36"E |
| C135 | 13°39'54" | 25.00' | 5.96' | 3.00' | 5.95' | N71°07'09"E |
| C136 | 53°01'02" | 25.00' | 23.13' | 12.47' | 22.32' | N37°46'41"E |
| C137 | 68°28'06" | 50.00' | 59.75' | 34.02' | 56.26' | N45°30'13"E |
| C138 | 59°39'49" | 50.00' | 52.07' | 28.67' | 49.75' | S70°25'49"E |
| C139 | 122°51'11" | 50.00' | 107.21' | 91.81' | 87.82' | S20°49'40"W |

| | | | |
|-----|----------|-----------------------------|------------|
| 1 | 07/24/12 | REVISED PER COUNTY COMMENTS | |
| Rev | Date | Description | Revised By |

City of Williamsburg & County of James City
 Circuit Court: This PLAT was recorded on
November 16, 2012
 at 3:11 PM, PG _____
 Document # 120024099
 BETSY B. WOOLRIDGE, CLERK
Patricia Williams, Dep. Clerk



13 Large/Small Plats Recorded
 with as of 120024099

SES
 CONSULTING ENGINEERS
 Hampton Roads | Central Virginia | Middle Peninsula

5248 Olde Towne Road, Suite 1
 Williamsburg, Virginia 23188
 Phone: (757) 253-0040
 Fax: (757) 220-8994
 www.sesva.com

**PLAT OF SUBDIVISION
 COLONIAL HERITAGE
 PHASE IV, SECTION 2A
 LOTS 1 THRU 109 AND
 COMMON OPEN SPACES #1 THRU #7
 PREPARED FOR COLONIAL HERITAGE LLC**

STONEHOUSE DISTRICT JAMES CITY COUNTY VIRGINIA

Project Contacts: TCS
 Project Number: 8861-42A
 Scale: N/A Date: 08/22/12
 Sheet Number
10 of 13

120024099

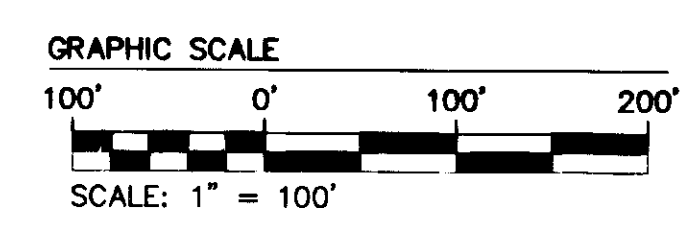
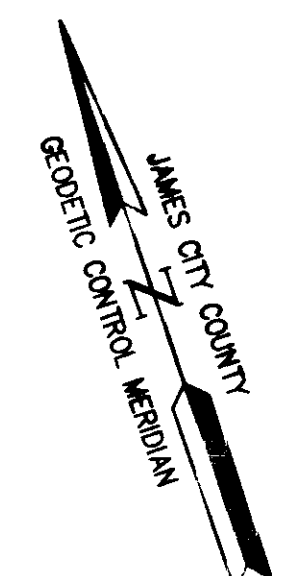
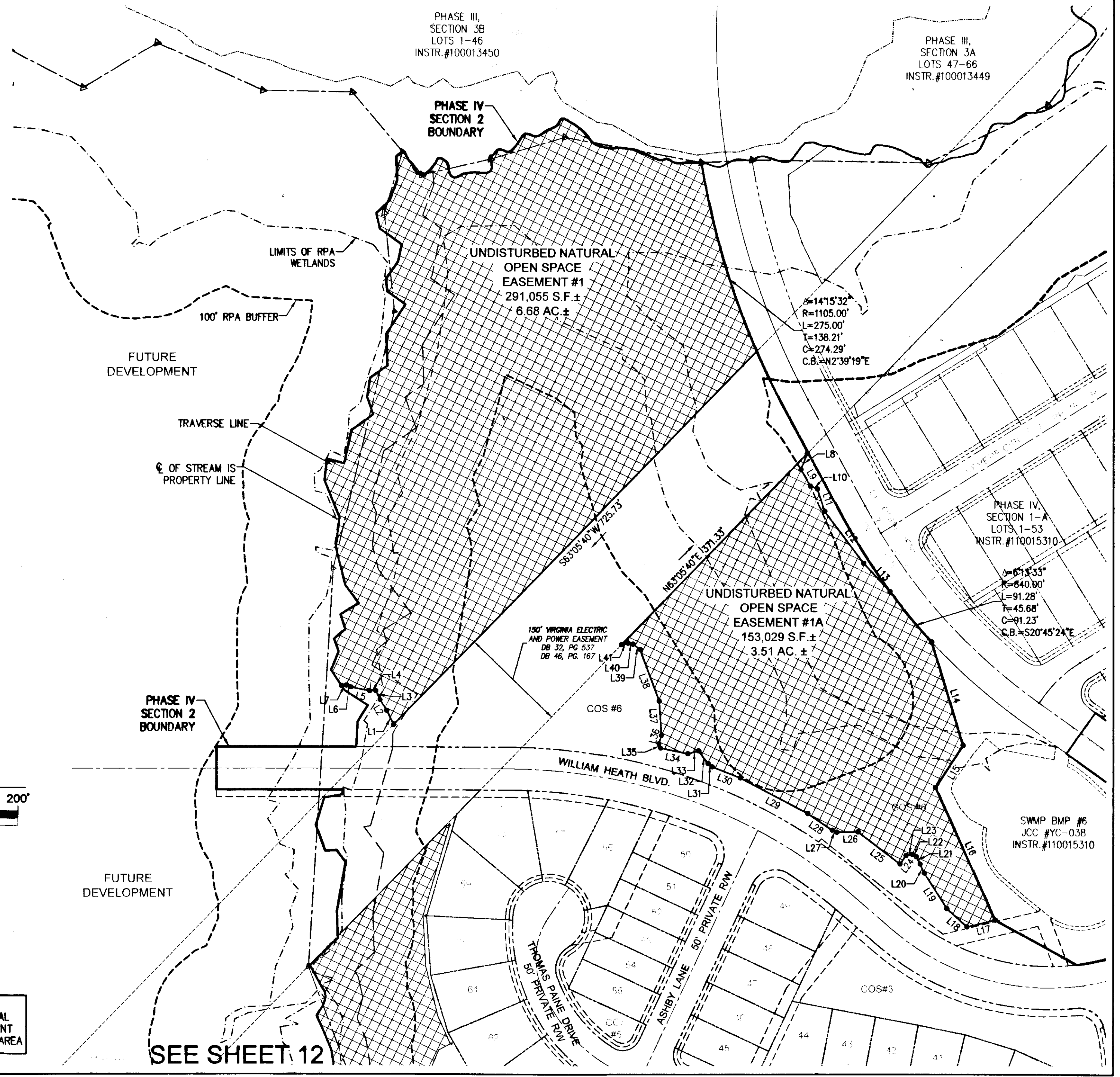
NATURAL OPEN SPACE EASEMENT #1

| LINE | BEARING | LENGTH |
|------|-------------|--------|
| L1 | S7°00'52"E | 21.86' |
| L2 | S12°44'55"E | 17.80' |
| L3 | S6°28'42"E | 13.92' |
| L4 | S74°38'05"E | 8.56' |
| L5 | S59°13'59"E | 26.54' |
| L6 | S49°09'33"E | 6.62' |
| L7 | S75°14'39"E | 7.06' |

NATURAL OPEN SPACE EASEMENT #1A

| LINE | BEARING | LENGTH |
|------|-------------|---------|
| L8 | S39°57'46"W | 24.06' |
| L9 | S10°39'52"E | 26.21' |
| L10 | S47°57'55"E | 10.81' |
| L11 | S11°1'33"W | 33.15' |
| L12 | S18°00'36"E | 90.67' |
| L13 | S23°54'21"E | 53.72' |
| L14 | N2°06'26"E | 150.79' |
| L15 | N51°54'53"E | 70.27' |
| L16 | N5°17'15"W | 202.66' |
| L17 | S84°33'31"E | 40.51' |
| L18 | N28°42'57"W | 37.84' |
| L19 | N13°25'13"W | 58.61' |
| L20 | N5°55'55"W | 14.03' |
| L21 | N9°16'51"W | 11.58' |
| L22 | N41°25'34"W | 6.50' |
| L23 | N82°35'24"W | 8.27' |
| L24 | S56°31'52"W | 15.07' |

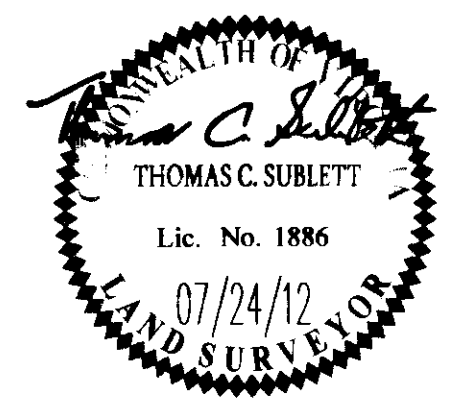
| LINE | BEARING | LENGTH |
|------|-------------|---------|
| L25 | N33°41'42"W | 73.72' |
| L26 | N71°55'01"W | 29.38' |
| L27 | S45°48'00"E | 7.09' |
| L28 | N36°41'03"W | 41.39' |
| L29 | N43°06'07"W | 106.48' |
| L30 | N49°27'12"W | 42.08' |
| L31 | N32°55'29"W | 7.40' |
| L32 | N17°17'09"W | 22.15' |
| L33 | N86°09'19"W | 15.43' |
| L34 | N59°27'28"W | 38.99' |
| L35 | N0°40'20"E | 6.56' |
| L36 | N36°07'40"E | 11.86' |
| L37 | N15°12'12"E | 48.32' |
| L38 | N1°27'08"W | 76.69' |
| L39 | N33°41'08"W | 12.22' |
| L40 | N59°38'22"W | 7.02' |
| L41 | N84°18'00"W | 9.39' |



LEGEND:
 UNDISTURBED NATURAL OPEN SPACE EASEMENT AND CONSERVATION AREA

SEE SHEET 12

| | |
|---|----------|
| City of Williamsburg & County of James City | |
| Circuit Court: This PLAT was recorded on | |
| November 16, 2012 | |
| at 3:11 PM, PB | PG |
| Document # 120024099 | |
| BETSY B. WOOLRIDGE, CLERK | |
| Patrick Williams, Dep. Clerk | |
| 1 | 07/24/12 |
| Rev | Date |
| REVISOR PER COUNTY COMMENTS | |
| Revised By | Revised |



13 Large/Small Plat(s) Recorded
 with serial 120024099

NES
 CONSULTING ENGINEERS

5248 Old Towne Road, Suite 1
 Williamsburg, Virginia 23188
 Phone: (757) 253-0040
 Fax: (757) 220-8994
 www.aesva.com

Hampton Roads | Central Virginia | Middle Peninsula

PLAT OF SUBDIVISION
COLONIAL HERITAGE
 PHASE IV, SECTION 2A
 LOTS 1 THRU 109 AND
 COMMON OPEN SPACES #1 THRU #7
 PREPARED FOR COLONIAL HERITAGE LLC

STONEHOUSE DISTRICT JAMES CITY COUNTY VIRGINIA

| | |
|-------------------|----------|
| Project Contacts: | TCS |
| Project Number: | 8881-42A |
| Scale: | 1"=100' |
| Date: | 06/22/12 |
| Sheet Number | 11 of 13 |


SEE SHEET 11

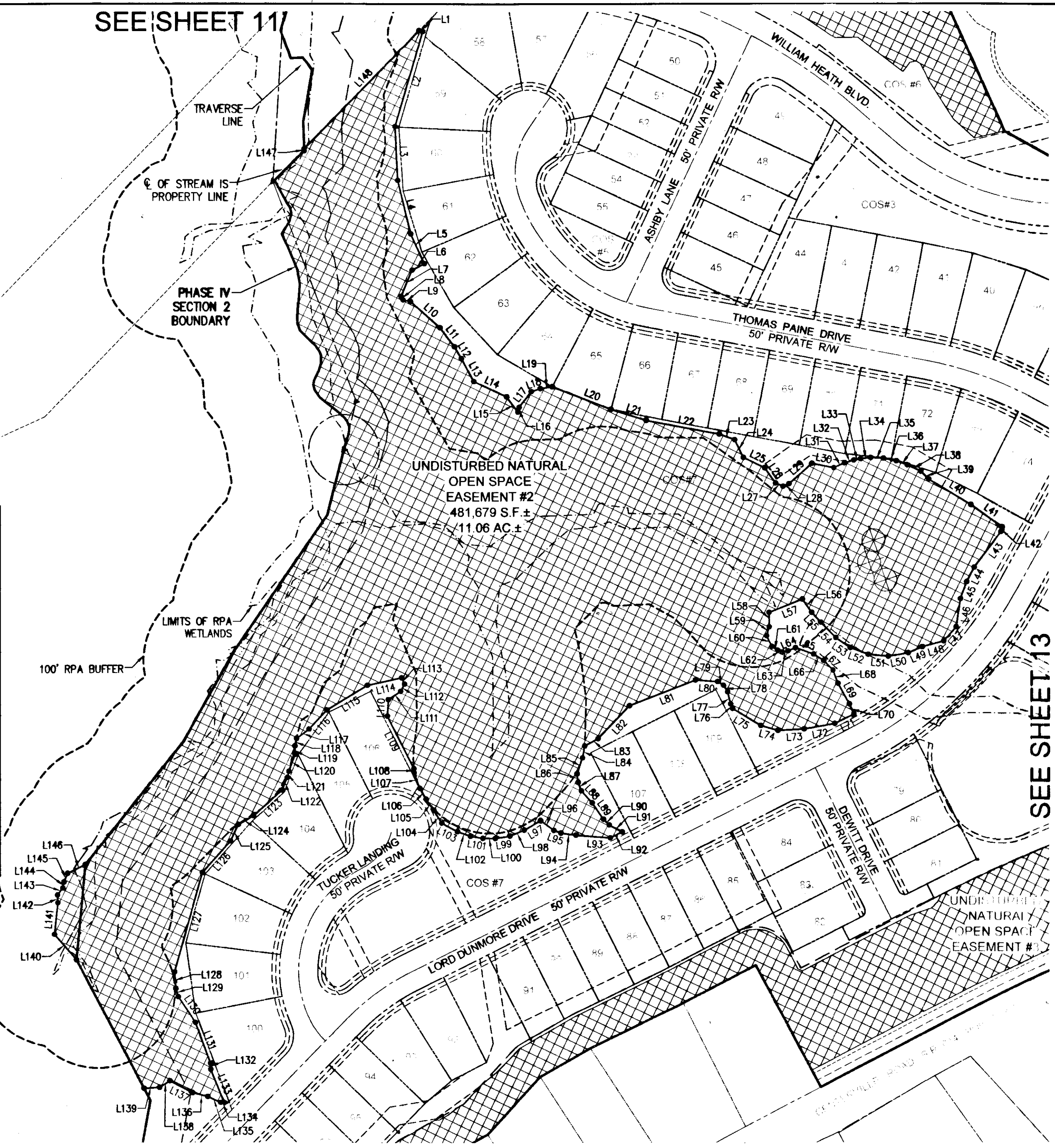
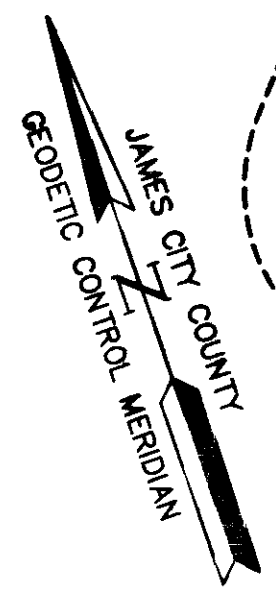
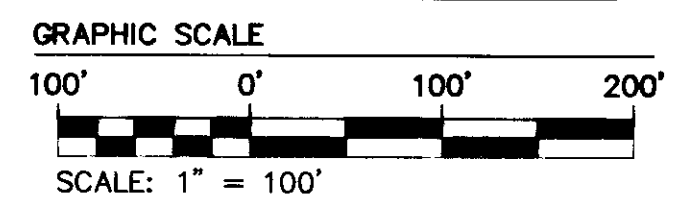
SEE SHEET 13

NATURAL OPEN SPACE EASEMENT #2

| LINE TABLE | | | LINE TABLE | | | LINE TABLE | | | LINE TABLE | | |
|------------|-------------|---------|------------|-------------|--------|------------|-------------|--------|------------|-------------|--------|
| LINE | BEARING | LENGTH | LINE | BEARING | LENGTH | LINE | BEARING | LENGTH | LINE | BEARING | LENGTH |
| L1 | N54°55'12"W | 4.80' | L20 | N49°48'47"W | 82.46' | L39 | S26°45'27"E | 14.94' | L58 | S18°20'56"W | 18.95' |
| L2 | N35°17'33"E | 129.39' | L21 | N53°18'56"W | 48.30' | L40 | S39°58'59"E | 63.97' | L59 | S35°27'04"W | 12.10' |
| L3 | N16°08'48"E | 70.38' | L22 | N60°19'21"W | 97.21' | L41 | S35°31'53"E | 50.26' | L60 | S7°38'06"E | 15.52' |
| L4 | N5°24'47"E | 72.04' | L23 | N50°27'45"W | 21.52' | L42 | S33°43'10"W | 6.49' | L61 | S35°49'52"E | 9.32' |
| L5 | N5°21'18"W | 42.79' | L24 | N7°08'18"W | 25.75' | L43 | S55°48'28"W | 58.46' | L62 | S49°25'35"E | 6.43' |
| L6 | N80°56'05"E | 18.15' | L25 | N45°08'03"W | 31.22' | L44 | S46°34'24"W | 21.24' | L63 | S84°17'17"E | 7.53' |
| L7 | N41°36'46"E | 37.24' | L26 | S16°08'00"E | 24.26' | L45 | S38°42'08"W | 23.54' | L64 | N85°57'38"E | 10.64' |
| L8 | N9°36'55"W | 5.28' | L27 | S46°35'38"E | 10.69' | L46 | S27°40'33"W | 37.49' | L65 | S51°36'15"E | 25.23' |
| L9 | N59°39'06"W | 9.90' | L28 | N84°46'42"E | 8.81' | L47 | S60°32'52"W | 24.56' | L66 | S39°08'00"E | 15.51' |
| L10 | N29°28'52"W | 51.77' | L29 | N67°27'40"E | 39.85' | L48 | N86°08'34"W | 29.05' | L67 | S25°19'59"E | 17.79' |
| L11 | N18°19'42"W | 30.78' | L30 | S59°37'21"E | 29.48' | L49 | S85°43'51"W | 20.00' | L68 | S2°06'13"E | 18.37' |
| L12 | N11°22'26"W | 18.08' | L31 | N84°31'32"E | 15.54' | L50 | N80°49'22"W | 26.55' | L69 | S9°40'02"E | 30.85' |
| L13 | N9°24'15"W | 34.20' | L32 | S87°35'25"E | 12.56' | L51 | N65°31'24"W | 26.38' | L70 | S5°25'03"E | 14.60' |
| L14 | N46°00'30"W | 47.16' | L33 | S81°50'43"E | 9.18' | L52 | N50°41'03"W | 24.97' | L71 | S82°36'01"W | 28.06' |
| L15 | N17°21'05"W | 25.07' | L34 | S77°53'57"E | 13.09' | L53 | N36°58'46"W | 23.23' | L72 | N81°07'57"W | 40.86' |
| L16 | S34°55'29"W | 6.29' | L35 | S68°09'26"E | 16.82' | L54 | N25°15'38"W | 28.39' | L73 | N74°05'22"W | 34.37' |
| L17 | S56°29'44"W | 26.02' | L36 | S59°25'38"E | 17.12' | L55 | N23°52'19"W | 17.40' | L74 | N54°45'32"W | 23.37' |
| L18 | N89°51'23"W | 12.29' | L37 | S50°59'57"E | 15.28' | L56 | N15°53'50"W | 21.27' | L75 | N39°53'40"W | 43.08' |
| L19 | N79°23'58"W | 15.55' | L38 | S45°27'27"E | 19.50' | L57 | S87°17'05"W | 46.83' | L76 | N3°49'20"W | 6.71' |

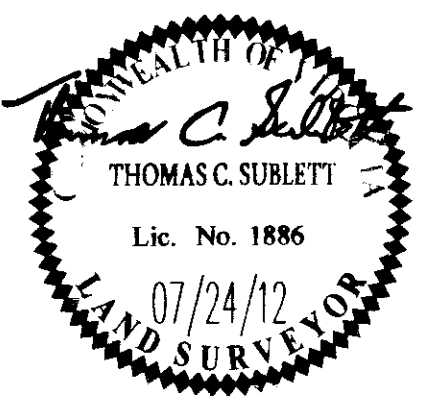
| LINE TABLE | | | LINE TABLE | | | LINE TABLE | | | LINE TABLE | | |
|------------|-------------|--------|------------|-------------|--------|------------|-------------|---------|------------|-------------|---------|
| LINE | BEARING | LENGTH | LINE | BEARING | LENGTH | LINE | BEARING | LENGTH | LINE | BEARING | LENGTH |
| L77 | N4°31'00"E | 16.55' | L96 | N34°12'20"W | 21.39' | L115 | S77°26'11"W | 62.15' | L134 | N67°20'18"W | 5.14' |
| L78 | N13°19'50"W | 10.27' | L97 | S78°19'23"W | 24.83' | L116 | S61°41'13"W | 34.14' | L135 | N45°30'00"W | 18.58' |
| L79 | N39°20'46"W | 8.91' | L98 | S87°54'27"W | 19.90' | L117 | S71°55'09"W | 20.32' | L136 | N56°48'14"W | 20.36' |
| L80 | N66°35'54"W | 28.88' | L99 | N79°52'36"W | 19.46' | L118 | S32°18'50"W | 10.00' | L137 | N43°19'25"W | 33.95' |
| L81 | S87°41'09"W | 92.54' | L100 | N70°25'04"W | 16.23' | L119 | S18°13'24"W | 11.23' | L138 | S75°43'18"W | 16.07' |
| L82 | S62°39'46"W | 59.50' | L101 | N61°40'52"W | 16.51' | L120 | S38°54'47"W | 23.49' | L139 | N74°03'34"W | 20.40' |
| L83 | S80°42'35"W | 19.99' | L102 | N51°29'48"W | 18.01' | L121 | S32°32'23"W | 8.19' | L140 | S21°41'42"E | 43.83' |
| L84 | S28°58'33"W | 15.98' | L103 | N42°34'08"W | 23.33' | L122 | S42°11'08"W | 18.14' | L141 | S25°01'22"W | 41.55' |
| L85 | S38°11'19"W | 21.99' | L104 | N13°05'05"W | 19.56' | L123 | S67°02'28"W | 50.17' | L142 | S15°57'42"W | 10.13' |
| L86 | S12°08'49"W | 11.25' | L105 | N15°25'25"W | 17.83' | L124 | S78°46'58"W | 22.67' | L143 | S56°20'04"W | 11.47' |
| L87 | S2°24'49"E | 12.01' | L106 | N10°48'09"W | 16.22' | L125 | S44°21'52"W | 23.91' | L144 | S30°59'26"W | 8.11' |
| L88 | S22°57'21"E | 21.11' | L107 | N1°31'07"W | 21.56' | L126 | S60°45'38"W | 55.48' | L145 | S41°02'09"W | 12.12' |
| L89 | S15°33'04"E | 25.95' | L108 | N16°25'04"E | 5.59' | L127 | S34°49'50"W | 135.05' | L146 | S82°45'22"W | 25.90' |
| L90 | S26°27'59"E | 10.82' | L109 | N7°45'50"W | 76.92' | L128 | S14°14'24"W | 21.57' | L147 | S17°11'56"W | 2.49' |
| L91 | S42°33'21"E | 19.20' | L110 | N22°19'39"E | 21.71' | L129 | S2°33'22"W | 11.39' | L148 | S63°06'28"W | 216.32' |
| L92 | S83°08'44"W | 17.40' | L111 | N74°39'53"E | 19.50' | L130 | S14°47'51"E | 40.84' | | | |
| L93 | N66°40'56"W | 44.99' | L112 | N46°43'56"E | 10.90' | L131 | S11°4'28"E | 56.60' | | | |
| L94 | N62°30'59"W | 19.83' | L113 | N6°44'51"W | 8.93' | L132 | S16°48'50"W | 8.15' | | | |
| L95 | N50°53'42"W | 9.88' | L114 | N83°36'10"W | 45.95' | L133 | S3°15'26"E | 47.47' | | | |

LEGEND:

 UNDISTURBED NATURAL OPEN SPACE EASEMENT AND CONSERVATION AREA



| | | | |
|-----|----------|-----------------------------|------------|
| 1 | 07/24/12 | REVISED PER COUNTY COMMENTS | AMS |
| Rev | Date | Description | Revised By |

City of Williamsburg & County of James City
 Circuit Court: This PLAT was recorded on
November 16, 2012
 at 3:11 PM, PG
 Document # **120024099**
 BETSY B. WOOLRIDGE, CLERK
 Patrick Hurlburt, Dep. Clerk



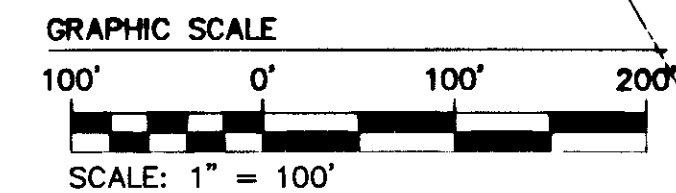
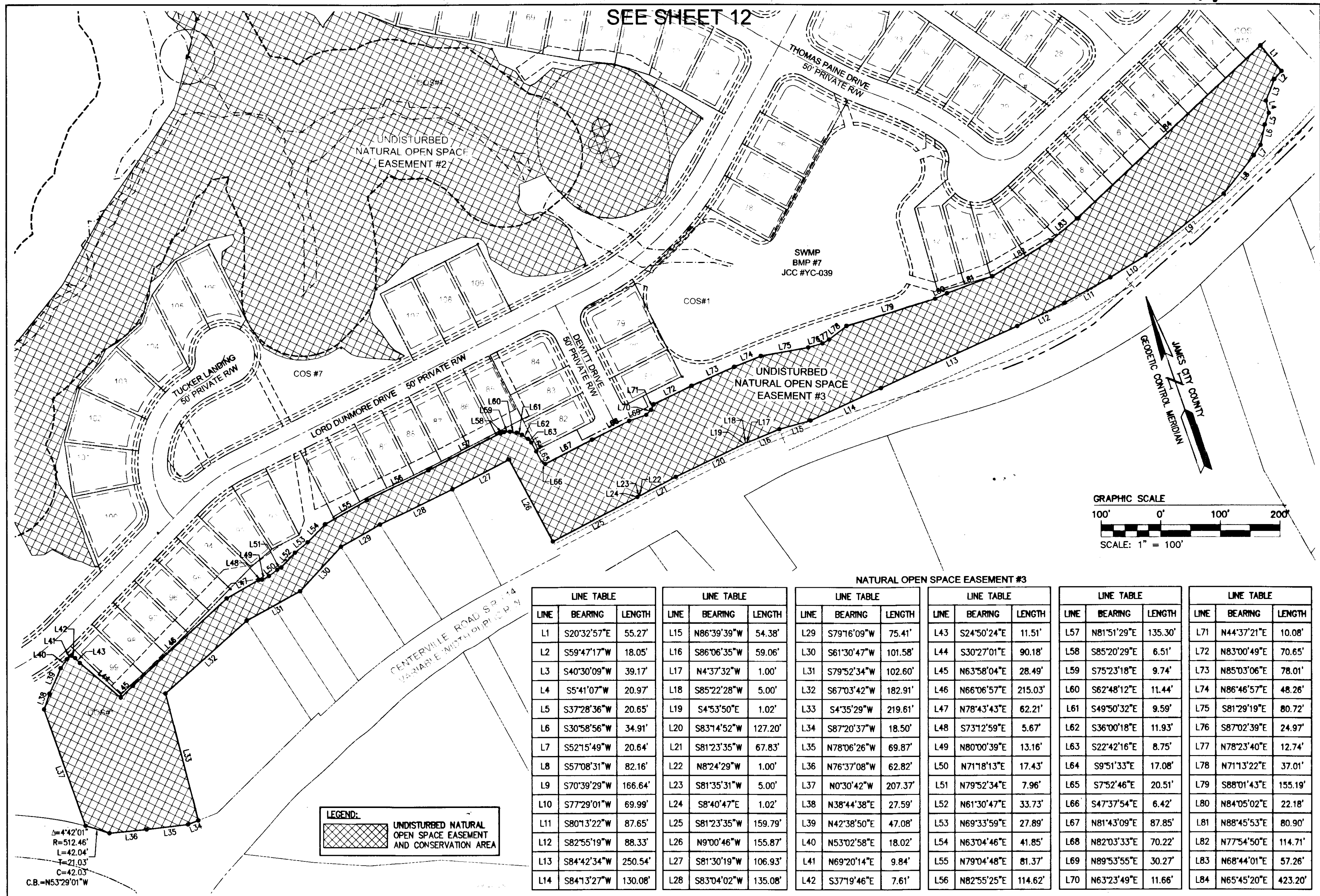
13 Large format plat recorded with 120024099

NES
 CONSULTING ENGINEERS
 Hampton Roads | Central Virginia | Middle Peninsula
 5248 Old Towne Road, Suite 1
 Williamsburg, Virginia 23186
 Phone: (757) 253-0040
 Fax: (757) 200-8994
 www.nesva.com

PLAT OF SUBDIVISION
COLONIAL HERITAGE
 PHASE IV, SECTION 2A
 LOTS 1 THRU 109 AND
 COMMON OPEN SPACES #1 THRU #7
 PREPARED FOR COLONIAL HERITAGE LLC
 STONEHOUSE DISTRICT JAMES CITY COUNTY VIRGINIA

Project Contacts: TCS
 Project Number: 8881-42A
 Scale: 1"=100'
 Date: 06/22/12
 Sheet Number
12 of 13

SEE SHEET 12



NATURAL OPEN SPACE EASEMENT #3

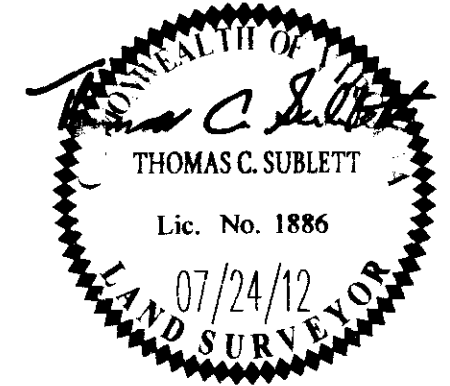
| LINE TABLE | | | LINE TABLE | | | LINE TABLE | | | LINE TABLE | | | LINE TABLE | | | LINE TABLE | | |
|------------|-------------|---------|------------|-------------|---------|------------|-------------|---------|------------|-------------|---------|------------|-------------|---------|------------|-------------|---------|
| LINE | BEARING | LENGTH | LINE | BEARING | LENGTH | LINE | BEARING | LENGTH | LINE | BEARING | LENGTH | LINE | BEARING | LENGTH | LINE | BEARING | LENGTH |
| L1 | S20°32'57"E | 55.27' | L15 | N86°39'39"W | 54.38' | L29 | S79°16'09"W | 75.41' | L43 | S24°50'24"E | 11.51' | L57 | N81°51'29"E | 135.30' | L71 | N44°37'21"E | 10.08' |
| L2 | S59°47'17"W | 18.05' | L16 | S86°06'35"W | 59.06' | L30 | S61°30'47"W | 101.58' | L44 | S30°27'01"E | 90.18' | L58 | S85°20'29"E | 6.51' | L72 | N83°00'49"E | 70.65' |
| L3 | S40°30'09"W | 39.17' | L17 | N4°37'32"W | 1.00' | L31 | S79°52'34"W | 102.60' | L45 | N63°58'04"E | 28.49' | L59 | S75°23'18"E | 9.74' | L73 | N85°03'06"E | 78.01' |
| L4 | S5°41'07"W | 20.97' | L18 | S85°22'28"W | 5.00' | L32 | S67°03'42"W | 182.91' | L46 | N66°06'57"E | 215.03' | L60 | S62°48'12"E | 11.44' | L74 | N86°46'57"E | 48.26' |
| L5 | S37°28'36"W | 20.65' | L19 | S4°53'50"E | 1.02' | L33 | S4°35'29"W | 219.61' | L47 | N78°43'43"E | 62.21' | L61 | S49°50'32"E | 9.59' | L75 | S81°29'19"E | 80.72' |
| L6 | S30°58'56"W | 34.91' | L20 | S83°14'52"W | 127.20' | L34 | S87°20'37"W | 18.50' | L48 | S73°12'59"E | 5.67' | L62 | S36°00'18"E | 11.93' | L76 | S87°02'39"E | 24.97' |
| L7 | S52°15'49"W | 20.64' | L21 | S81°23'35"W | 67.83' | L35 | N78°06'26"W | 69.87' | L49 | N80°00'39"E | 13.16' | L63 | S22°42'16"E | 8.75' | L77 | N78°23'40"E | 12.74' |
| L8 | S57°08'31"W | 82.16' | L22 | N8°24'29"W | 1.00' | L36 | N76°37'08"W | 62.82' | L50 | N71°18'13"E | 17.43' | L64 | S9°51'33"E | 17.08' | L78 | N71°13'22"E | 37.01' |
| L9 | S70°39'29"W | 166.64' | L23 | S81°35'31"W | 5.00' | L37 | N0°30'42"W | 207.37' | L51 | N79°52'34"E | 7.96' | L65 | S7°52'46"E | 20.51' | L79 | S88°01'43"E | 155.19' |
| L10 | S77°29'01"W | 69.99' | L24 | S8°40'47"E | 1.02' | L38 | N38°44'38"E | 27.59' | L52 | N61°30'47"E | 33.73' | L66 | S47°37'54"E | 6.42' | L80 | N84°05'02"E | 22.18' |
| L11 | S80°13'22"W | 87.65' | L25 | S81°23'35"W | 159.79' | L39 | N42°38'50"E | 47.08' | L53 | N69°33'59"E | 27.89' | L67 | N81°43'09"E | 87.85' | L81 | N88°45'53"E | 80.90' |
| L12 | S82°55'19"W | 88.33' | L26 | N9°00'46"W | 155.87' | L40 | N53°02'58"E | 18.02' | L54 | N63°04'46"E | 41.85' | L68 | N82°03'33"E | 70.22' | L82 | N77°54'50"E | 114.71' |
| L13 | S84°42'34"W | 250.54' | L27 | S81°30'19"W | 106.93' | L41 | N69°20'14"E | 9.84' | L55 | N79°04'48"E | 81.37' | L69 | N89°53'55"E | 30.27' | L83 | N68°44'01"E | 57.26' |
| L14 | S84°13'27"W | 130.08' | L28 | S83°04'02"W | 135.08' | L42 | S37°19'46"E | 7.61' | L56 | N82°55'25"E | 114.62' | L70 | N63°23'49"E | 11.66' | L84 | N65°45'20"E | 423.20' |

LEGEND:

 UNDISTURBED NATURAL OPEN SPACE EASEMENT AND CONSERVATION AREA

Δ=4°42'01"
 R=512.46'
 L=42.04'
 T=21.03'
 C=42.03'
 C.B.=N53°29'01"W

| | | | |
|---|----------|-----------------------------|------------|
| City of Williamsburg & County of James City Circuit Court: This PLAT was recorded on November 16, 2012 at <u>3:11</u> AM/PM, PB <u>PG</u> Document # <u>120024099</u> BETSY B. WOOLRIDGE, CLERK <i>Heck Marlowe</i> , Dep. Clerk | | | |
| 1 | 07/24/12 | REVISED PER COUNTY COMMENTS | AMS |
| Rev. | Date | Description | Revised By |



13 Large/Small (13) Record
 120024099

NES
 CONSULTING ENGINEERS
 Hampton Roads | Central Virginia | Middle Peninsula

5248 Olde Towne Road, Suite 1
 Williamsburg, Virginia 23188
 Phone: (757) 263-0040
 Fax: (757) 220-8994
 www.aesva.com

PLAT OF SUBDIVISION
COLONIAL HERITAGE
 PHASE IV, SECTION 2A
 LOTS 1 THRU 109 AND
 COMMON OPEN SPACES #1 THRU #7
 PREPARED FOR COLONIAL HERITAGE LLC

STONEHOUSE DISTRICT JAMES CITY COUNTY VIRGINIA

| | |
|-------------------|-----------------|
| Project Contacts: | TCS |
| Project Number: | 8881-42A |
| Scale: | 1"=200' |
| Date: | 06/22/12 |
| Sheet Number | 13 of 13 |