
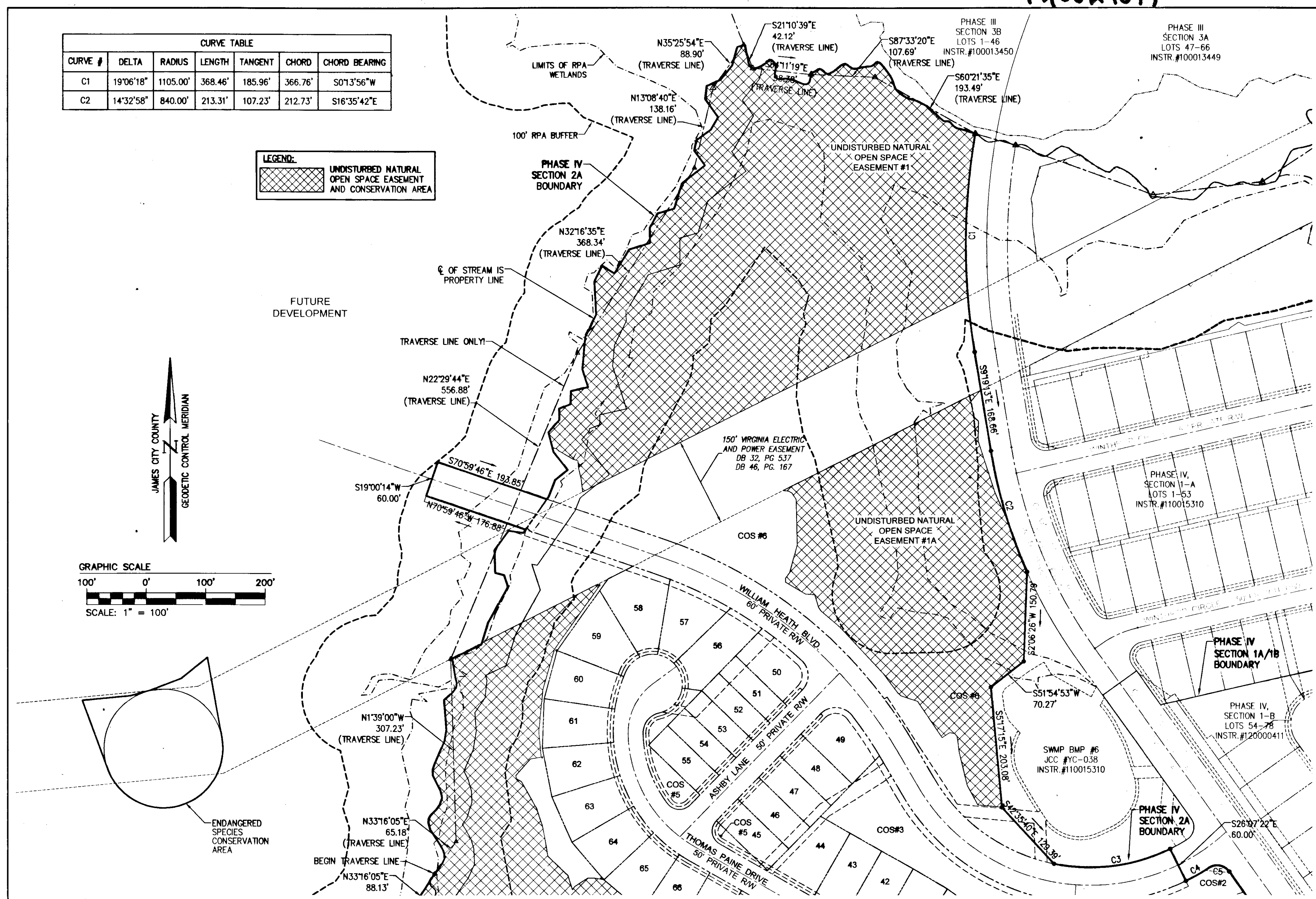
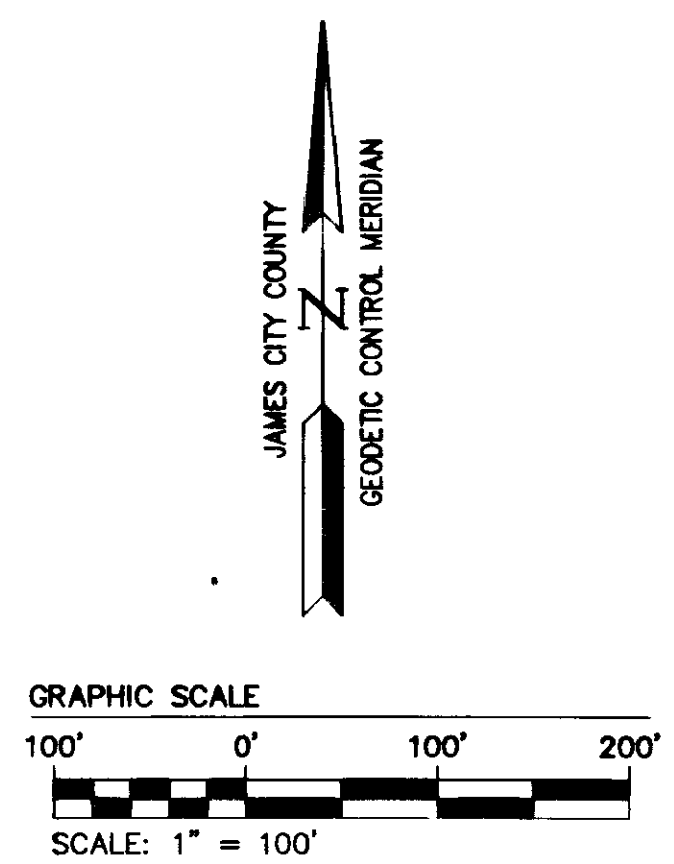


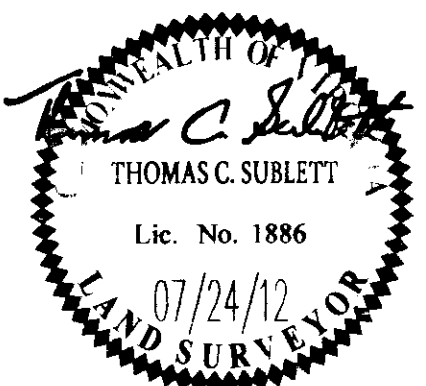
120024099

CURVE TABLE						
CURVE #	DELTA	RADIUS	LENGTH	TANGENT	CHORD	CHORD BEARING
C1	19°06'18"	1105.00'	368.46'	185.96'	366.76'	S0°13'56"W
C2	14°32'58"	840.00'	213.31'	107.23'	212.73'	S16°35'42"E

**LEGEND:**  
 UNDISTURBED NATURAL OPEN SPACE EASEMENT AND CONSERVATION AREA



City of Williamsburg & County of James City Circuit Court: This PLAT was recorded on <b>November 16, 2012</b>			
at <b>3:11</b>	AM/PM	PB	PG
Document # <b>120024099</b>			
BETSY B. WOOLRIDGE, CLERK			
<i>Patrick Malone</i> , Dep. Clerk			
1	07/24/12	REVISED PER COUNTY COMMENTS	
Rev.	Date	Description	Revised By



**13** Large/Small Plat(s) Recorded  
 with as of 120024099

**NES**  
 CONSULTING ENGINEERS

5248 Olde Towne Road, Suite 1  
 Williamsburg, Virginia 23188  
 Phone: (757) 253-0040  
 Fax: (757) 220-8994  
 www.aesva.com

Hampton Roads | Central Virginia | Middle Peninsula

**PLAT OF SUBDIVISION  
 COLONIAL HERITAGE  
 PHASE IV, SECTION 2A  
 LOTS 1 THRU 109 AND  
 COMMON OPEN SPACES #1 THRU #7  
 PREPARED FOR COLONIAL HERITAGE LLC**

STONEHOUSE DISTRICT | JAMES CITY COUNTY | VIRGINIA

Project Contacts:	TCS
Project Number:	8881-42A
Scale:	1"=100'
Date:	06/22/12
Sheet Number:	<b>4 of 13</b>