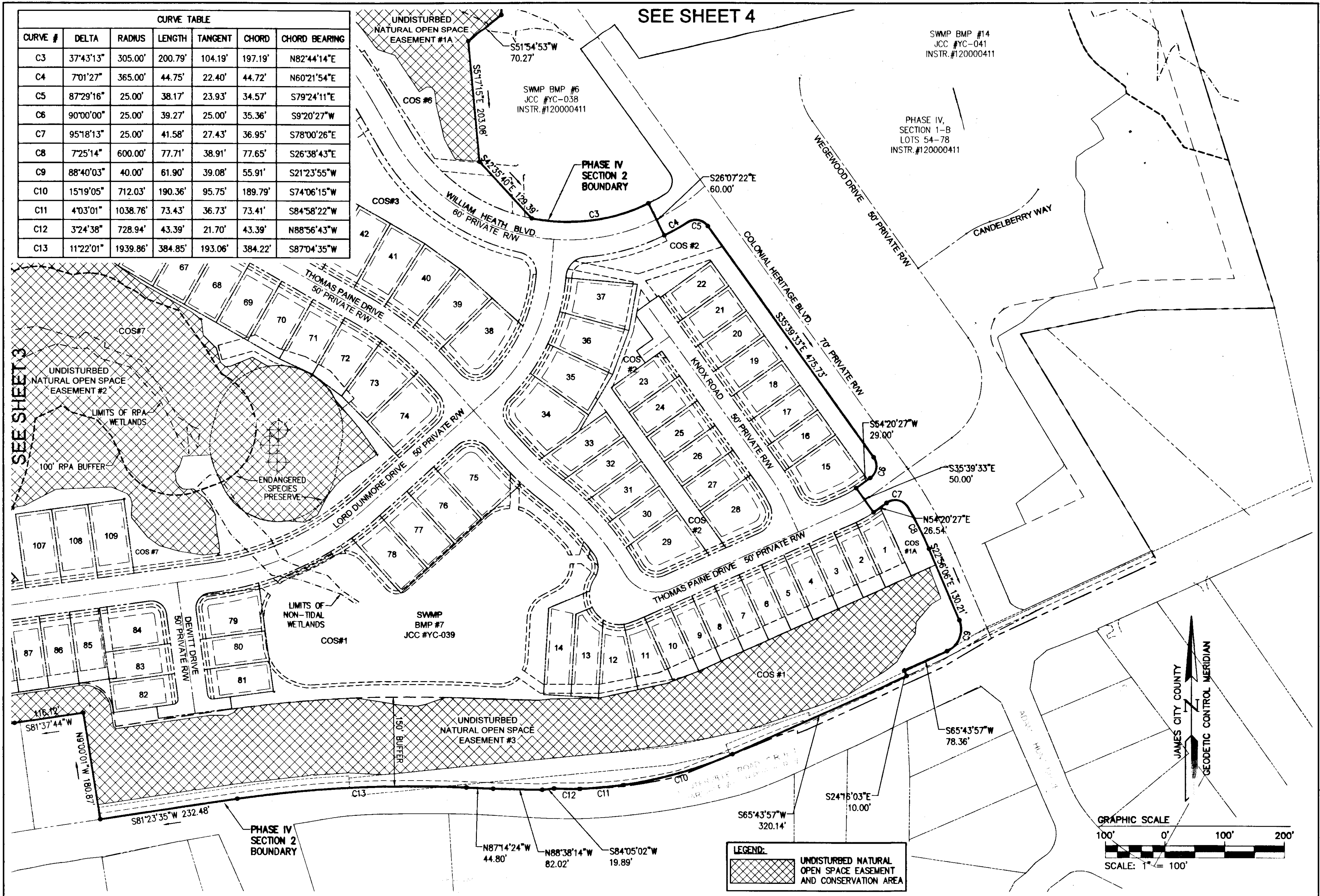


120024099



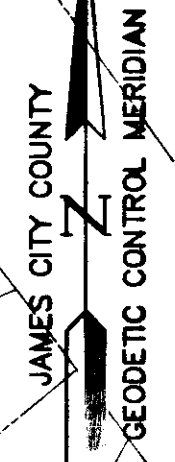
CURVE TABLE						
CURVE #	DELTA	RADIUS	LENGTH	TANGENT	CHORD	CHORD BEARING
C3	37°43'13"	305.00'	200.79'	104.19'	197.19'	N82°44'14"E
C4	70°1'27"	365.00'	44.75'	22.40'	44.72'	N60°21'54"E
C5	87°29'16"	25.00'	38.17'	23.93'	34.57'	S79°24'11"W
C6	90°00'00"	25.00'	39.27'	25.00'	35.36'	S9°20'27"W
C7	95°18'13"	25.00'	41.58'	27.43'	36.95'	S78°00'26"E
C8	7°25'14"	600.00'	77.71'	38.91'	77.65'	S26°38'43"E
C9	88°40'03"	40.00'	61.90'	39.08'	55.91'	S21°23'55"W
C10	15°19'05"	712.03'	190.36'	95.75'	189.79'	S74°06'15"W
C11	4°03'01"	1038.76'	73.43'	36.73'	73.41'	S84°58'22"W
C12	3°24'38"	728.94'	43.39'	21.70'	43.39'	N88°56'43"W
C13	11°22'01"	1939.86'	384.85'	193.06'	384.22'	S87°04'35"W

SEE SHEET 3

SEE SHEET 4

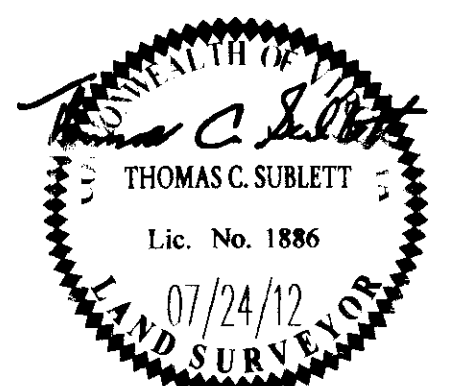
**LEGEND:**  
 UNDISTURBED NATURAL OPEN SPACE EASEMENT AND CONSERVATION AREA

**GRAPHIC SCALE**  
 100' 0' 100' 200'  
 SCALE: 1" = 100'



1	07/24/12	REVISED PER COUNTY COMMENTS	Revised By
---	----------	-----------------------------	------------

City of Williamsburg & County of James City  
 Circuit Court: This PLAT was recorded on  
**November 16, 2012**  
 at 3:11 PM, PB  
 Document # **120024099**  
 BETSY B. WOOLRIDGE, CLERK  
*Betsy Woolridge*, Dep. Clerk



**AES**  
 CONSULTING ENGINEERS  
 Hampton Roads | Central Virginia | Middle Peninsula  
 5248 Old Towne Road, Suite 1  
 Williamsburg, Virginia 23188  
 Phone: (757) 253-0040  
 Fax: (757) 220-8994  
 www.aesva.com

**PLAT OF SUBDIVISION  
 COLONIAL HERITAGE  
 PHASE IV, SECTION 2A  
 LOTS 1 THRU 109 AND  
 COMMON OPEN SPACES #1 THRU #7  
 PREPARED FOR COLONIAL HERITAGE LLC**  
 STONEHOUSE DISTRICT JAMES CITY COUNTY VIRGINIA

Project Contacts: TCS  
 Project Number: 8881-42A  
 Scale: 1"=100' Date: 08/22/12  
 Sheet Number  
**2 of 13**