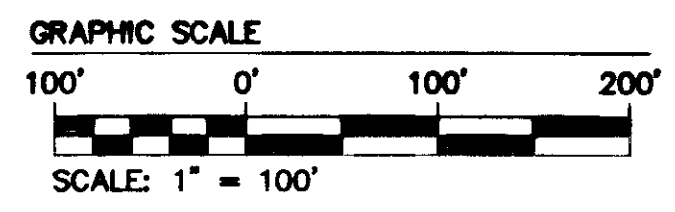
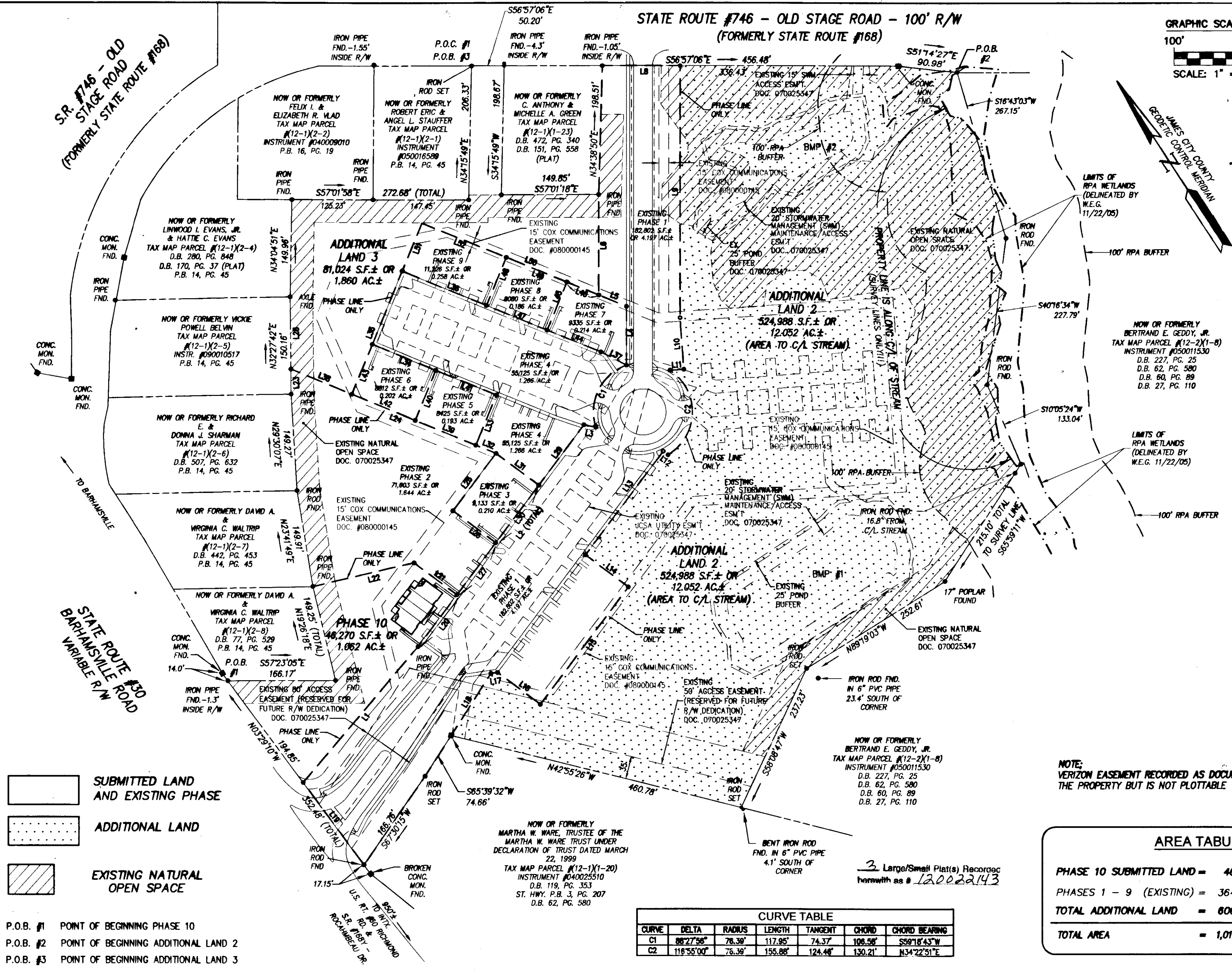


120022143

STATE ROUTE #746 - OLD STAGE ROAD - 100' R/W
(FORMERLY STATE ROUTE #168)



LINE	BEARING	LENGTH
L1	N73°08'04"E	275.48'
L2	N69°48'47"E	426.79'
L3	S45°25'20"E	18.77'
L4	S33°04'56"W	90.83'
L5	S34°42'41"E	48.82'
L6	S33°02'40"W	155.17'
L7	S56°57'06"E	120.05'
L8	S33°02'40"W	399.47'
L9	S29°01'18"W	80.00'
L10	N60°58'42"W	21.36'
L11	N20°11'13"W	9.22'
L12	S89°48'47"W	200.00'
L13	S20°11'13"E	82.50'
L14	S20°11'13"E	228.22'
L15	N20°11'13"W	82.50'
L16	N20°11'13"W	10.36'
L17	S85°39'32"W	113.28'
L18	N03°29'10"W	157.63'
L19	S89°48'47"W	100.00'
L20	N20°11'13"W	82.50'
L21	N20°11'13"W	190.42'
L22	S32°27'42"E	38.82'
L23	S34°42'41"E	341.49'
L24	N69°48'47"E	110.70'
L25	N20°11'13"W	111.54'
L26	S89°48'47"W	110.00'
L27	S89°48'47"W	110.00'
L28	N32°27'42"E	111.54'
L29	S89°48'47"W	110.00'
L30	S89°48'47"W	110.70'
L31	N20°11'13"W	82.50'
L32	N34°42'41"E	33.38'
L33	S55°17'19"W	83.41'
L34	S34°42'41"E	105.85'
L35	S55°17'19"W	285.59'
L36	N34°42'41"E	140.32'
L37	N29°24'44"W	44.29'
L38	N34°42'41"E	101.48'
L39	N34°42'41"W	101.00'
L40	S55°17'19"W	83.41'
L41	S34°42'41"E	101.00'
L42	N34°42'41"W	100.00'
L43	N55°17'19"E	83.41'
L44	N34°42'41"W	89.50'
L45	S55°17'19"W	80.00'
L46	N34°42'41"W	53.03'
L47	N34°42'41"W	101.00'
L48	S55°17'19"W	80.00'
L49	S34°42'41"E	101.00'
L50	N34°42'41"W	294.35'
L51	N55°17'19"E	80.00'
L52	S34°42'41"E	140.32'



- SUBMITTED LAND AND EXISTING PHASE
- ADDITIONAL LAND
- EXISTING NATURAL OPEN SPACE

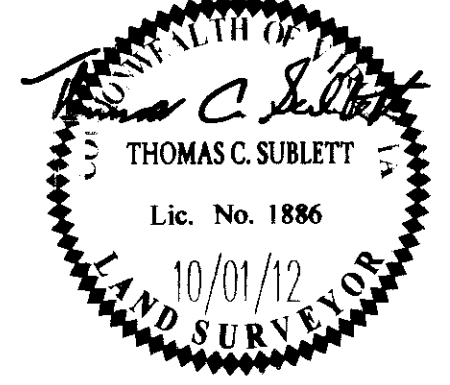
P.O.B. #1 POINT OF BEGINNING PHASE 10
P.O.B. #2 POINT OF BEGINNING ADDITIONAL LAND 2
P.O.B. #3 POINT OF BEGINNING ADDITIONAL LAND 3

CURVE	DELTA	RADIUS	LENGTH	TANGENT	CHORD	CHORD BEARING
C1	86°27'56"	76.39'	117.85'	74.37'	106.58'	S59°16'43"W
C2	116°55'00"	76.39'	155.88'	124.44'	130.21'	N34°22'51"E

NOTE: VERIZON EASEMENT RECORDED AS DOCUMENT NO. 080007588 AFFECTS THE PROPERTY BUT IS NOT PLOTTABLE

AREA TABULATION	
PHASE 10 SUBMITTED LAND =	46,270 S.F.± OR 1.062 AC.±
PHASES 1 - 9 (EXISTING) =	364,541 S.F.± OR 8.369 AC.±
TOTAL ADDITIONAL LAND =	606,012 S.F.± OR 13.912 AC.±
TOTAL AREA =	1,016,823 S.F.± OR 23.343 AC.±

City of Williamsburg & County of James City
Circuit Court: This PLAT was recorded on
18 October 2012
at 12:03 AM PM, PB _____ PG _____
Document # 120022143
BETSY B. WOOLRIDGE, CLERK
[Signature], Dep. Clerk



AES
CONSULTING ENGINEERS
5248 Old Towne Road, Suite 1
Williamsburg, Virginia 23186
Phone: (757) 253-0040
Fax: (757) 220-8994
www.aesva.com

PLAT OF CONDOMINIUM
WEATHERLY AT WHITEHALL
PHASE 10
STONEHOUSE DISTRICT JAMES CITY COUNTY VIRGINIA

Project Contacts: JFS
Project Number: 9048-09
Scale: 1"=100' Date: 10/01/12
Sheet Number
2 OF 3