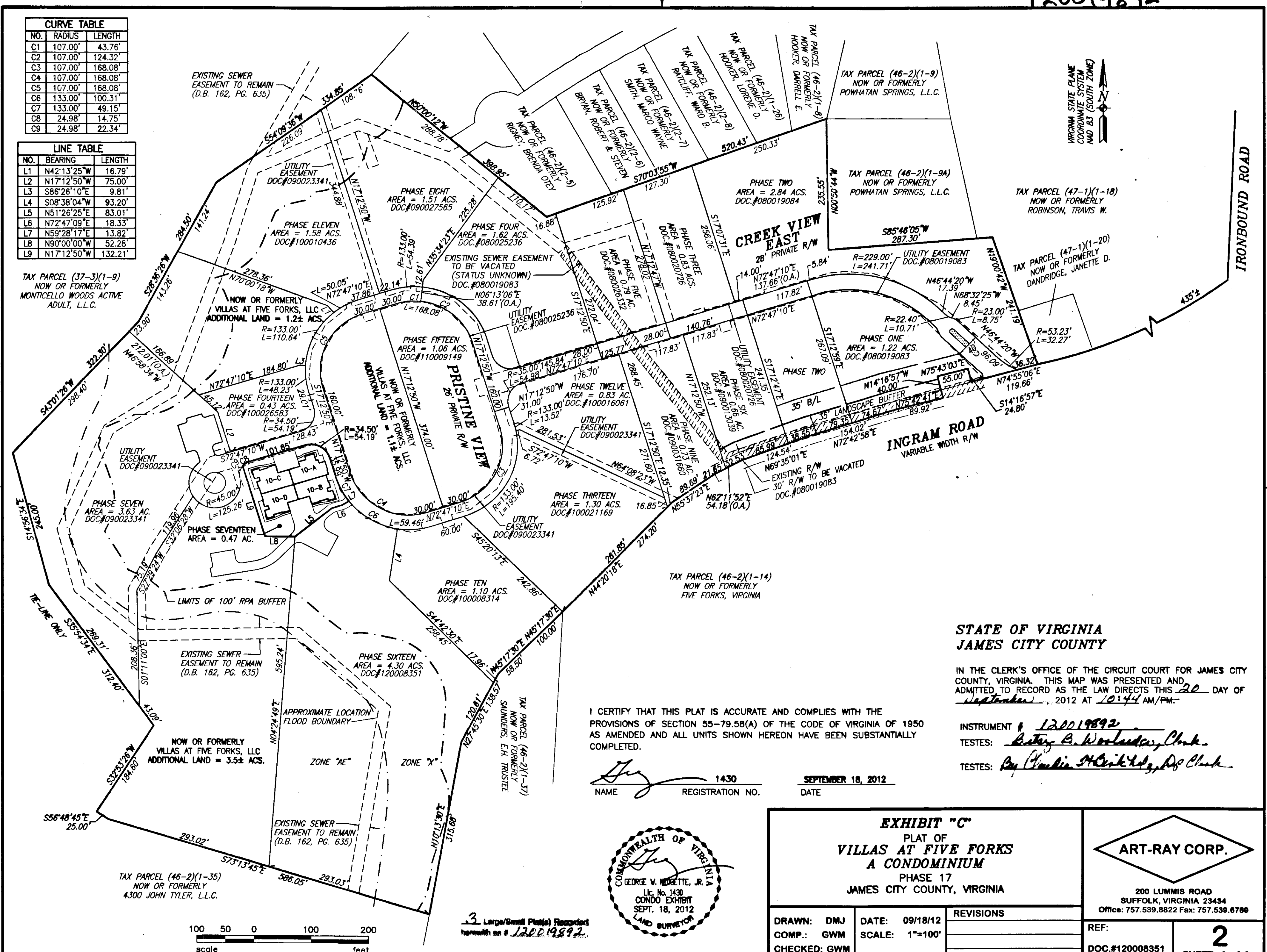


CURVE TABLE		
NO.	RADIUS	LENGTH
C1	107.00'	43.76'
C2	107.00'	124.32'
C3	107.00'	168.08'
C4	107.00'	168.08'
C5	107.00'	168.08'
C6	133.00'	100.31'
C7	133.00'	49.15'
C8	24.98'	14.75'
C9	24.98'	22.34'

LINE TABLE		
NO.	BEARING	LENGTH
L1	N42°13'25"W	16.79'
L2	N17°12'50"W	75.00'
L3	S86°26'10"E	9.81'
L4	S08°38'04"W	93.20'
L5	N51°26'25"E	83.01'
L6	N72°47'09"E	18.33'
L7	N59°28'17"E	13.82'
L8	N90°00'00"W	52.28'
L9	N17°12'50"W	132.21'



TAX PARCEL (37-3)(1-9)  
NOW OR FORMERLY  
MONTICELLO WOODS ACTIVE  
ADULT, L.L.C.



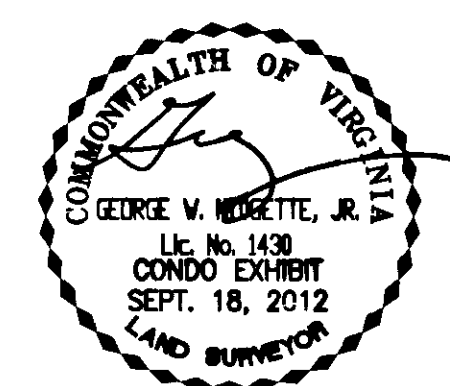
**STATE OF VIRGINIA  
JAMES CITY COUNTY**

IN THE CLERK'S OFFICE OF THE CIRCUIT COURT FOR JAMES CITY COUNTY, VIRGINIA, THIS MAP WAS PRESENTED AND ADMITTED TO RECORD AS THE LAW DIRECTS THIS 20 DAY OF September, 2012 AT 10:44 AM/PM.

I CERTIFY THAT THIS PLAT IS ACCURATE AND COMPLIES WITH THE PROVISIONS OF SECTION 55-79.58(A) OF THE CODE OF VIRGINIA OF 1950 AS AMENDED AND ALL UNITS SHOWN HEREON HAVE BEEN SUBSTANTIALLY COMPLETED.

*[Signature]* 1430  
NAME REGISTRATION NO. DATE  
SEPTEMBER 18, 2012

INSTRUMENT # 120019892  
TESTES: Betsy B. Worland, Clerk  
TESTES: Ray Charles H. Clark, Jr., Dep. Clerk



<b>EXHIBIT "C"</b>		<b>ART-RAY CORP.</b>
PLAT OF <b>VILLAGES AT FIVE FORKS</b> A CONDOMINIUM PHASE 17 JAMES CITY COUNTY, VIRGINIA		
DRAWN: DMJ COMP.: GWM CHECKED: GWM	DATE: 09/18/12 SCALE: 1"=100'	200 LUMMIS ROAD SUFFOLK, VIRGINIA 23434 Office: 757.539.8822 Fax: 757.539.6766
REVISIONS		REF: DOC.#120008351
		<b>2</b> SHEET: 2 of 3



3 Large/Small Plat(s) Recorded  
herein on # 120019892